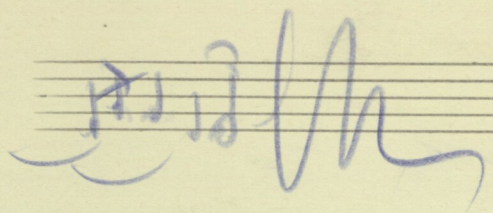
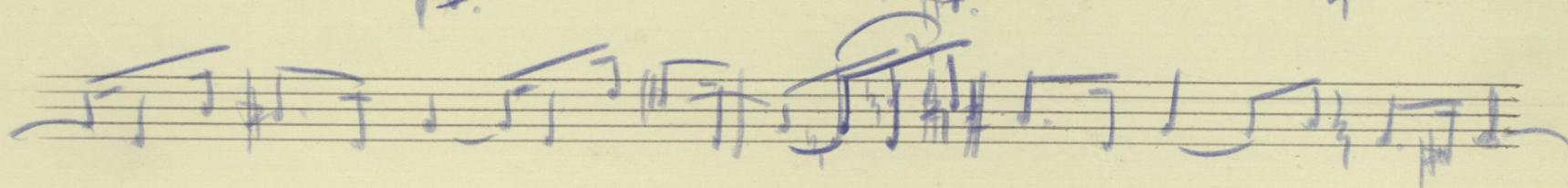
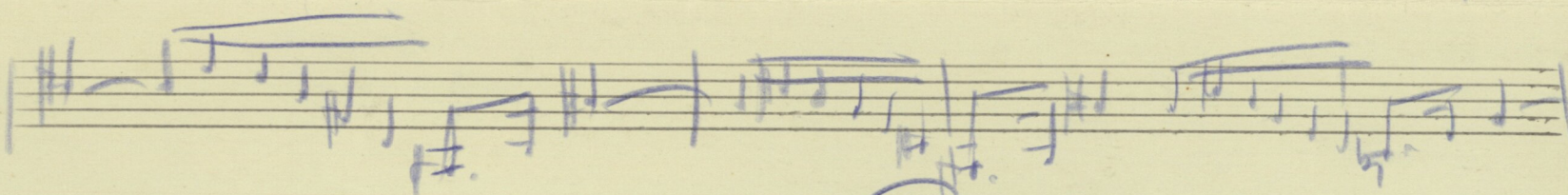
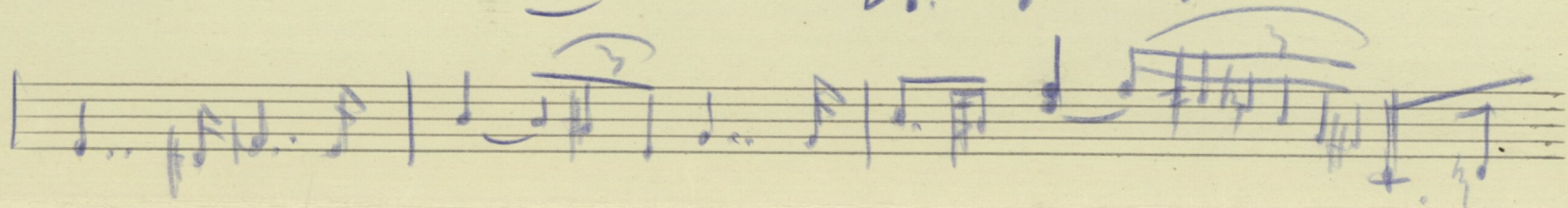
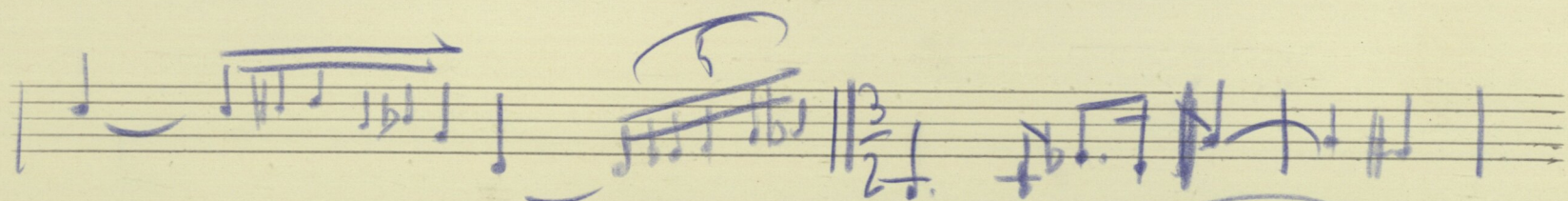
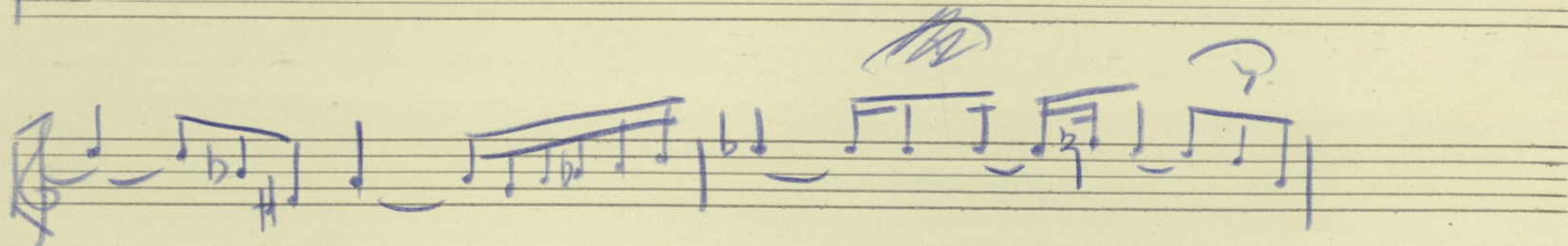
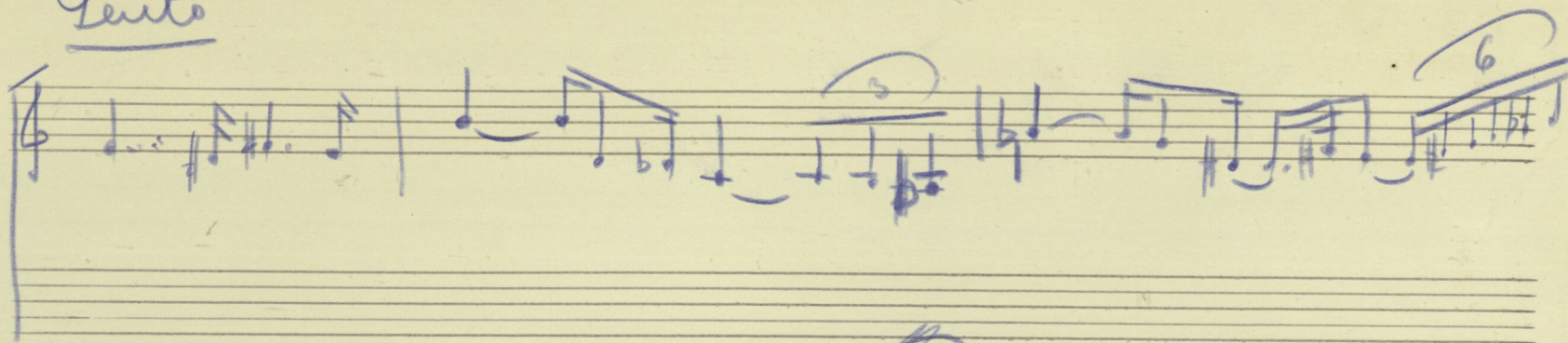


?

Fragment



Lento





Handwritten musical notation on a grand staff. The top staff contains a complex melodic line with many accidentals (sharps and flats) and some triplets. The bottom staff contains a bass line with long horizontal lines, possibly indicating sustained notes or rests, and some chordal structures. The notation is dense and appears to be a sketch or a working draft.

Handwritten musical notation on a grand staff. The top staff continues the melodic line from the first system, featuring more accidentals and some triplet markings. The bottom staff continues the bass line with similar horizontal lines and chordal structures. The notation is consistent with the first system, suggesting a continuation of the same piece.

Handwritten musical notation on a grand staff. The top staff shows a long horizontal line, possibly a sustained note or a rest, followed by a double bar line. The bottom staff shows a few notes and rests, followed by a double bar line. This system appears to be the end of a section or a phrase.



Handwritten musical score, first system. The top staff is in treble clef with a key signature of two flats (B-flat and E-flat). It begins with a piano (*p*) dynamic marking, followed by a crescendo hairpin leading to a pianissimo (*pp*) dynamic. The bottom staff is in bass clef. The system concludes with a double bar line.

Handwritten musical score, second system. The top staff continues in treble clef. Above the staff, the markings *rit.* (ritardando) and *a tempo* are written. The bottom staff continues in bass clef. The system concludes with a double bar line.

Handwritten musical score, third system. The top staff continues in treble clef. The bottom staff continues in bass clef. The system concludes with a double bar line.

Handwritten musical score, fourth system. The top staff continues in treble clef. The bottom staff continues in bass clef. The system concludes with a double bar line.

Handwritten musical score, fifth system. This system consists of empty staves in both treble and bass clefs, indicating the end of the written music on this page.