

Being put in general
charge of the Cybele
Sanctuary, I divided
it into five rough
sections, in only two
of which, I and ~~the~~^{the}
did do any actual
digging. I have used capital
letters to designate
main points, chiefly
ends of walls. Some
letters have been dupli-
cated but not in
the same section, and as
practically all of
my later work was
confined to section III,
there should be no
confusion. Small
letters have been used
for minor points and
numbers have been occas-
ionally employed for
blocks or courses, chiefly
in the smaller diagrams.

As the Cybele Sanctuary
is off axis, although
I have shown the main
directions in the key
diagram (p. 122) as
a rule my directions
are general, South (S.)
to the left, North
right, etc.

9
some sort of rude
figurine. No facial
features are rendered.
In this case the
groove on the reverse
was probably intended
for some sort of
insertion, of what
material is uncertain.

Found a gem, a
red amethyst (?) in
trench AC, about 11.00 m.
south of A and about .30 m.
from pavement.



Continued work along
trench I AC with six
or seven men, also
started to clear area
III Y R working from
wall XV to the
east down the slope
with fourteen men.
Five men continued
to clear section
II E G and from
five to six men
were employed upon
the cars.



B 12.00 m → A pt.

Was forced to remove
stone 63 from wall
I A B.

Fragment of cut-
stone with cuttings
and lead dowels found
in II E G, 2.00 m. from
wall G H and 1.75 m. from
wall I G. See Goldman
notebook.

In section III we
found a drain at point
X, 1.70 m. below the
top of wall XV.
A great quantity
of tiles closely
packed appeared

Sept 14

III XY

III XY

2.80 m. to south of
X along wall XY, 1.00 m
below the top of the
wall.

IAB

Found a bronze coin
in trench AC about 12.00
m from A. Colophon type



Obverse



Reverse

Near same spot in
trench IAC were found
a bronze arrowhead
and a bronze ring.

The earth in section
III along wall XY was
loosely packed; we came
to stereo at a point
approximately 1.30 m.
below top of wall.

Only 1.60 m. of drain
is preserved from the
point where it emerges
from beneath the wall.

It probably ceased
at about the distance
since, although the
lower end is badly
saturated, it was
thickly packed with
stones which would make
a good outlet.

Continued work along
wall IAB with 6-7
men; in room # EG
along wall IG with
6 men; and in III XYZ
with 11-12 men

a bronze coin with the
head of boy with
fillet in profile



on obverse, horse of
Colophon on reverse
found in trench
IAC about 11:50 m to left
of A; depth uncertain.

Four bronze nail-
heads found near
same spot, also
a piece of lead.

In section III I
divided the men into
three groups, one working
along wall XY, another
working east of X, and
a third clearing the
north side of wall
MN.

at noon we finished
clearing the earth
from along the east
side of wall IAB
and started to do
the same along
wall IJK.

The gang which
had been working about
4-5.00 m. below wall
III XY then began to
work north along
wall III LO.

Near the end of
wall IAB, 12.70 m. to

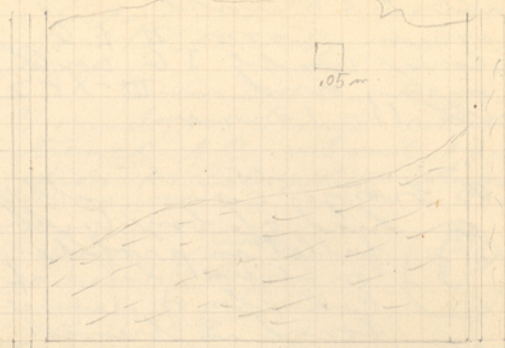
IAB

Sept. 15



Reverse

left of A was found a



ph

Sept 15.

Pave-
ment

4.00
.035
6.00
.005 m

--- broken

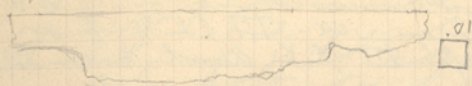
.96

I AB

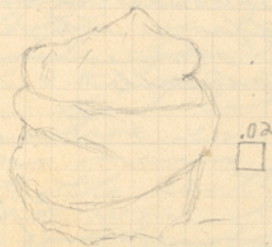
strucco panel enough of which was preserved to give its length and the width of the mouldings as shown above. This shows that the whole wall AB was panelled in strucco surely colored, though no traces have been preserved. This adds strength to the story that the terrace A was roofed with tiles so many traces of which were found in the stone fill. This stone fill gave way to plain earth at about 12.00 m. to south of A.

In section III, about 4.00 to west of M were found the iron blades

of a knife, .155 m long.

IJK

along wall IJK about Sept 15 4.50 m to north of S. was found a curious piece of stone, probably a fragment of a statue though whether it represents drapery or is a kind of headpiece is hard to say.



In section III wall XY turns towards the SW 8.00 m from point X with an obtuse angle.

III XY

The earth along this wall is loose black loam with but few stones and an occasional boulder. Very few pot sherds were found.

Sept. 16

ph
III, 4

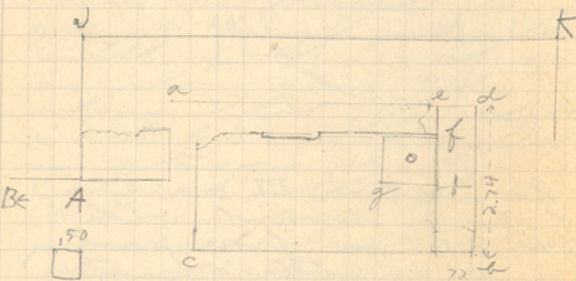
in some sections with
7 men working on I & KL,
6 men on III, L & O, 5 on
wall III XY and 3 on III
MN.

Miss Cox started to
clear the section HCE
back of the temple
of Reschepw. EF.

I A B

A bronze coin found in II,
A.B. about 1.50 m to East of
A.

There seem to be a
griffin on the reverse.
The obverse was un-
describable.



ph
III, 5

ph
III, 6

ph
III, 1

ph
III, 2

In section I, the earth to
the west and north of
the altar at and along
wall JK was cleared
away, exposing a fine
block of f which has a
large square hole, presumably
a Lema hole, though whether
one edge sloped or not it
is impossible to tell.
Several good U clamps
were also exposed.

L.O. was cleared to a
point 5.50 m to north
of point L. A great
quantity of pot shards
were brought to light
in this region as well
as quite a few tiles.
They are both similar
in character to those
found along wall
AB. The presence of
the latter seem to
point to the con-
clusion that this
section was also
roofed as was the
corresponding section
AC. There were very
few tiles found along
wall JK, on the
other hand but such
negative evidence
by no means proves
that the central
section was left
open while the wings
were roofed, though
it is a possible
theory. About 4.00 m.
to the north of L
we encountered a
rather stone full
similar in character
to that along wall
ABC (p. 6) though
of smaller stones
for the most part.

ph IV, 3

Sept. 16

ph IV, 4

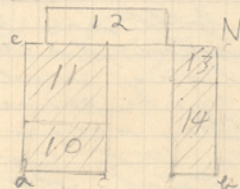
ph IV, 5

ph IV, 6

We continued to
work S.W. along wall
XY and reached a
point ca. 7.00 m.
past the bend.

III MN

III MN (see pp. 1, 2, 19); N a seems to have been a sort of base, perhaps for a statue group. Block 12 in a cylindrical block and 110 m. above the level of the other blocks.



Sept
16

125



M

After we finished clearing section I J K L we started a trench RS ca. 5.00 m north of P and 5.00 m West of III a. with the intention of meeting trench III MN. (pp. 2, 17)

In section III with 8 men working along wall L O, 7 men in trench RS, 4 men in trench MN and 6 men along wall XT Z. Miss Cox used 8 men in for work in section II C E. This number added to the 5 men on the case, the 4 men at the tent, 2 expending game-bags and the 4 men at work upon the Carter makes 47 in all including the assistant foreman.

pt. IV, 1

Sept. 17

pt. IV, 2

In section III we continued to clear the dirt to the east of wall L O; the same sort of rock-fill was encountered as on the previous day although it gives way to good earth about 3.00 m. to the East. We have now reached a point in this area off about 6.50 m north of L and 4.00 m east of wall L O. an occasional pot-stand or tile continues to appear but little else of importance.

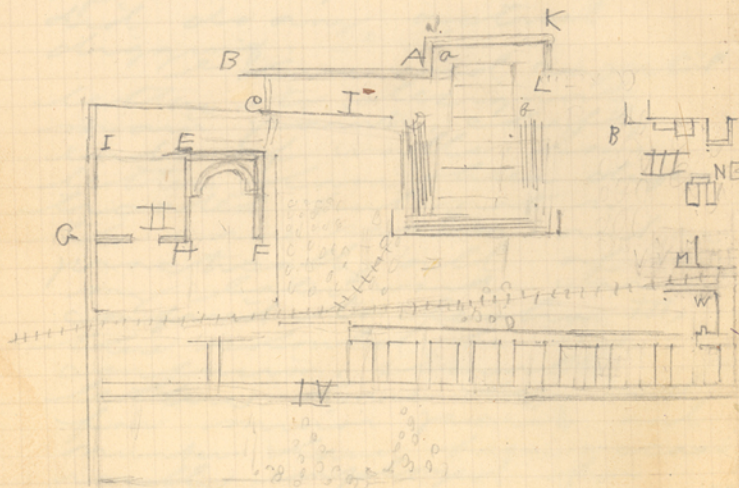
III L O

pt. IV, 3

One object of interest found in this area was a mgt. stone, of cylindrical form.

A large piece of curved terra-cotta was also found.

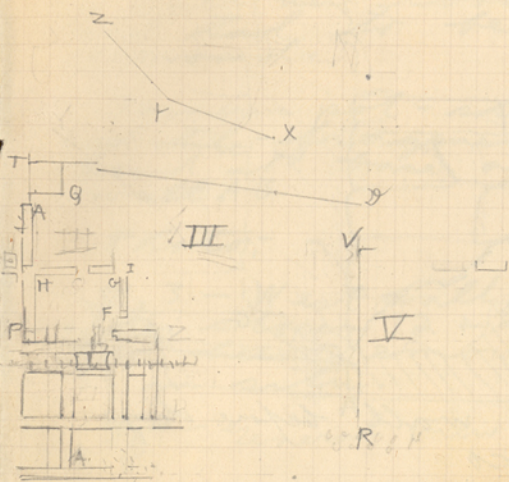
291
S. ↙



→ N

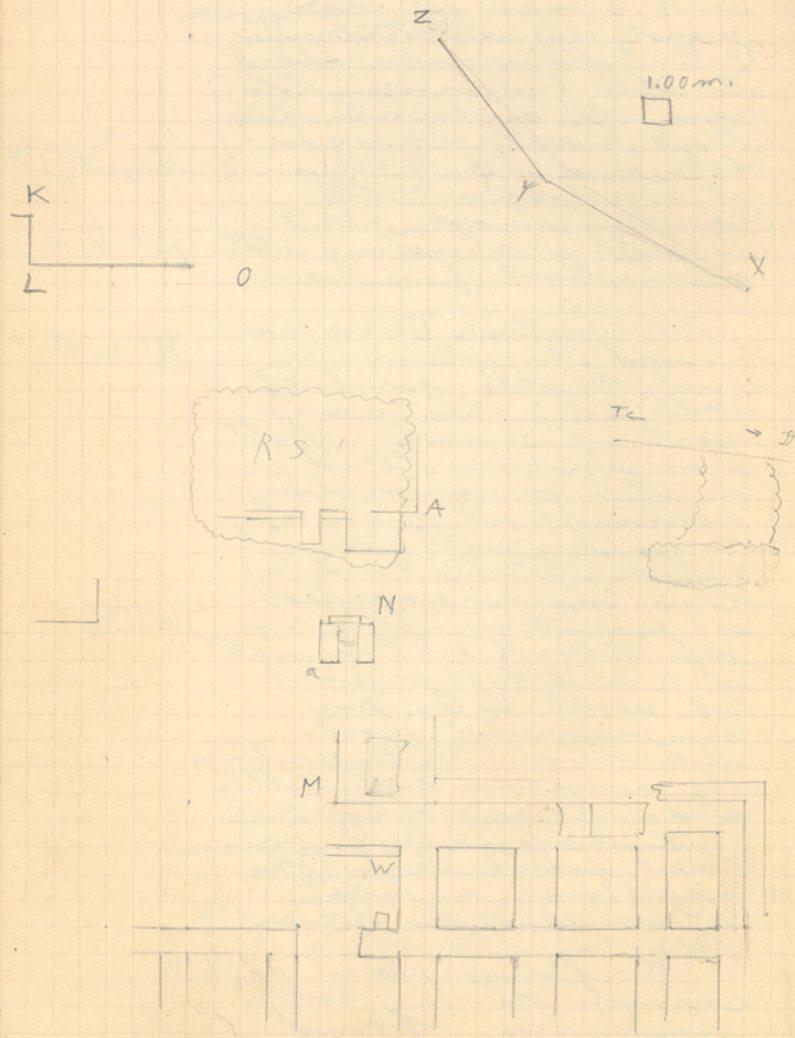
IV

2



N

Section III



formed part of the
upper run of a large
pillar or other part.

III RS

Trench RS has
now reached a depth
of from 1.40 - 4.0 m
and its dimensions
are approximately
3.50 x 3.00 m.

Sept 17

The surface earth
is black soil low
similar to that
found over wall
X Y Z, but after a
depth of ca. 1.00 m
was reached the
earth became
harder and was
thickly embedded
with stones. At
about this
depth a coarse
stone type was
impossible to
recognize. a few
potsherds were found.

III XYZ

wall X Y Z came
to an end at
point Q where it
meets a line
of boulders. one
dug a trench
all along the
wall down to
steres or native
rock but only
a few pot-sherds
an occasional
loam - weight or
tile fragment

pl. I, 4

continued to be fine black loam but as we approached point 2 a sort of sandy gravel was encountered.

The gang of men who had been working in this area were transferred to trench TD with the intention of seeking the ground level in this spot.

In section MN we advanced to the W. ca 1.30 m. beyond block 12 (p. 17) proving that structure Na is not continued in that direction. The blocks used are well-cut and stone 10 is finished on its southern face. This structure was most probably a base for an statue-group or perhaps an altar. If the former theory is correct, there are probably similar structures to the West or South which we shall endeavor to find. The ground slopes up sharply to the W. and the shore reached a depth of ca 1.80 m. on this side of the trench. Pot-sherds and tile-fragments continued to be found. A layer of them, closely packed in the hard earth, appeared at the lower level at Na.

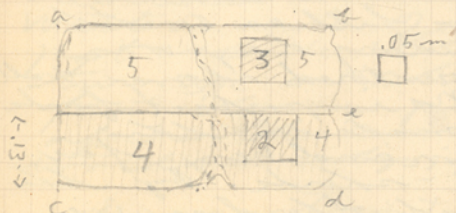
Working in the same section using 7-8 men on ## L O, 6-7 men on ## R S, 4 men on ## M N and 8 men on ## T D. Mrs Goldman employed 8 men on trench ## E C. One man was taken off of ## L O and put to work finishing off J K L. The rest of the men were either at work breaking stones or employed upon the cars.

ph. V, 7

Sept. 19

In trench TD we found a large number of cut porous stones. One of them which was broken in the findings seems to have been a threshold block.

T D



The door-post hole 3 is .08 x .08 m and .03 m in depth and the lower part of the block 4 is cut back to a depth of .03 m. In this lower section there is another cutting 2, .085 x .10 m and .02 m

depth which was probably also for a dom-point.

Another good one was part of a wall block with a dowel hole



and clamp mark on its upper face. If the dowel is in the

center of the block as it should be then the stone was ca. .86 m in length.

Now the clamp-hole are two letters AE probably a mason's mark. The extant end of the block had an anamorphosis of .07 m and the face of the block had a heavy rustication .06 m in width and .04 m in depth.

Sept
19

III L0

The same sort of stones full as on the preceding day was encountered along wall L0. No important finds were made in this region and very few pot-shards. By the end of the day we had reached a point 2.30 m. north of point L.

III RS

In pit RS we have reached a depth of ca 2.00 m on the Western edge and have enlarged the area so that its dimensions are now

2.80 m. x 2.60 m.

The earth is of a peculiar sand quality packed thickly with stones and seems almost sterile-like in quality but pot-shards still appear. As our depth here is below that of L0 while still above that of MN we have decided to abandon work here for the present, to see what developments in the above two trenches bring forth.

Sept 19

In section MN work continued toward the West and North and a depth of ca 2.00 m has been reached on the Western side. The pot-shards that turn up are chiefly from heavy pots, of rather coarse workmanship.

III MN

ph. V, 10

In section TD where the cut blocks were found there are appearing some rather interesting developments. We are now working along wall TD which appears to be a stepped terrace wall. One lane now cleared

ph. V, 11

ca. 1.30 at the face
of the lower step
and two courses in
depth.

Another small
trench was begun
about 2.00 m. below
D with the intention
of having the two
trenches meet but
upon finding a
cut block, apparently
in situ, lying in a
easterly direction we
proceeded more to
the east in the
hope of uncovering
more of the wall,
if such it was.
This was the only
block as yet found,
although some more
blocks in about
the same line, though
loosely laid, appeared
to the west.

The earth in this
region is soft but
the large number
of roots and stones
makes the going
slow. No pot-sherds
or tiles of any
importance were
found.

Continued work as
before except that
we abandoned work
on # R S and put
more men on M N
and T B with the
men divided as
follows: 7 men on
M N, 10 men on T B
10 men on L O and
one man on I B & K.
Some Goldman wall
8 men as before
on # E C.

In section # L O
we have now gone
north along the
wall to a point
10 m. from L. The
stone - still continues
unabated. The usual
pot-sherds and
tile fragments
were found.

In section M N
nothing of note
was found but, with
the extra pick
and shovel men present
has been comparatively
fast considering
the hardness of
the soil and we
have now reached
a point ca. 2.20 m
west of the altar Na.
at about 2.00 m. from
the altar two
worked stones lying
parallel to each
other 2.00 m. apart
and lying from

L O

Sept
20.

ph. #1, 1

M N

ph. #2, 2

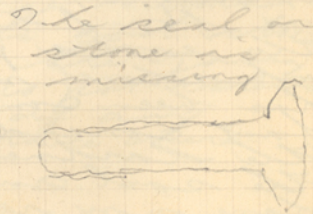
East to West are being revealed. They may possibly be in situ but more likely not. Nothing new in the way of pot - a scroll was found.

III T D

The most interesting development is along wall T D. 2 fire co. 9.50 m. of the lower wall has been laid bare which has at least three courses of a height of ca. 1.35 m. It is probably much higher but we have not as yet attempted to get to the bottom of it.

At about 8.00 m to the south of D. were found an iron ring and an iron nail.

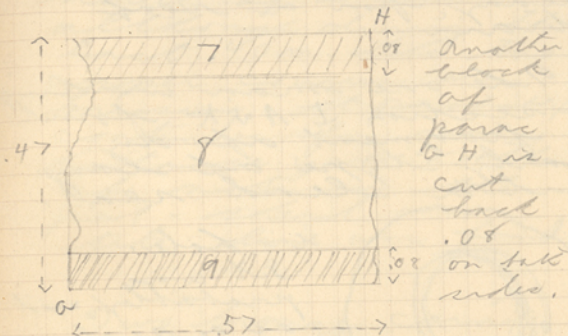
ph. II, 4



Several interesting stones were found along this wall T D.

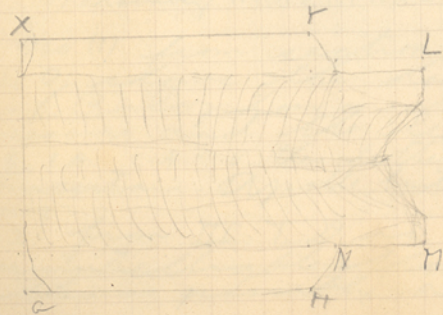
One paron block is cut back to the depth of .09 m.

The surface of the cutting 6 is fairly smooth - punctured - as in the outer edge which is .115 m thick, a b; the upper part 5 is quite rough as are the edges ac, cd and d b.



The cutting varies in depth 7 being .015 deep and 8 .03 m deep.

A stone drain was also found near wall T D ca 15.0 m. from D.



Sept 20

ph. II, 5

ph. II, 7

On X4 K
only.

Sept.

20.

It was ca. 30 in thickness of which the first .07 m is smooth finished. The rest flares out ca. 05 m more making the under side ca. 53 m instead of .48 m. This section was evidently at the end of the drain and presumably overlying judging by the slope up the end LMN but it seems too lean for a roof drain.

The one man working in section I A K found a fragment of an early type of lamp and a lead seal.



c = hole.

It was probably used as a seal for a closed pitloir.

ph
V1, 6

We started work this morning using the following men, 6 along wall III L O, 10 in III M N, 10 along wall T D and 3 clearing the bottom earth along wall A J K.

There were no new developments along wall L O; we have reached a point ca 10.00 m. to the north of L and, although during the last .40 m. the two upper courses are missing, it probably continues for some distance yet. Nothing of note in the pot. shed or tile line was found.

III L O

Sept 21

Two bronze coins were found.



(2)

(1) Probably HTHEIANAE

No (1) from section III, L O, shows the reverse of Caligula on the reverse and the letters E I A C A - the letters uncertain. Apollo bust on obverse.

(2) from III T D is unintelligible though there is possibly a

bee on one side

Another bronze coin, so thick encrusted with iron as to be unintelligible, was found near the same spot in section T D.



III MN

It was in section III MN that the latest development occurred.

We have now dug to the west ca 2.75 m from block 12 in Na (p. 17) and have found just R S which is still ca 1.00 m above our level. A number of cut blocks were encountered but none actually in situ until, at ca. 2.47 m from the west face of Na we found the beginning of an apparently rather large structure, L L (p. 33) of which part of three blocks have been partly unearthed.

III T D

Wall T D is being unearthed rather fast. Towards the South an apparent break in the wall occurred where the two upper courses disappear. The lower courses (at least two) continue however. To the North a large number of large stones, some of them cut

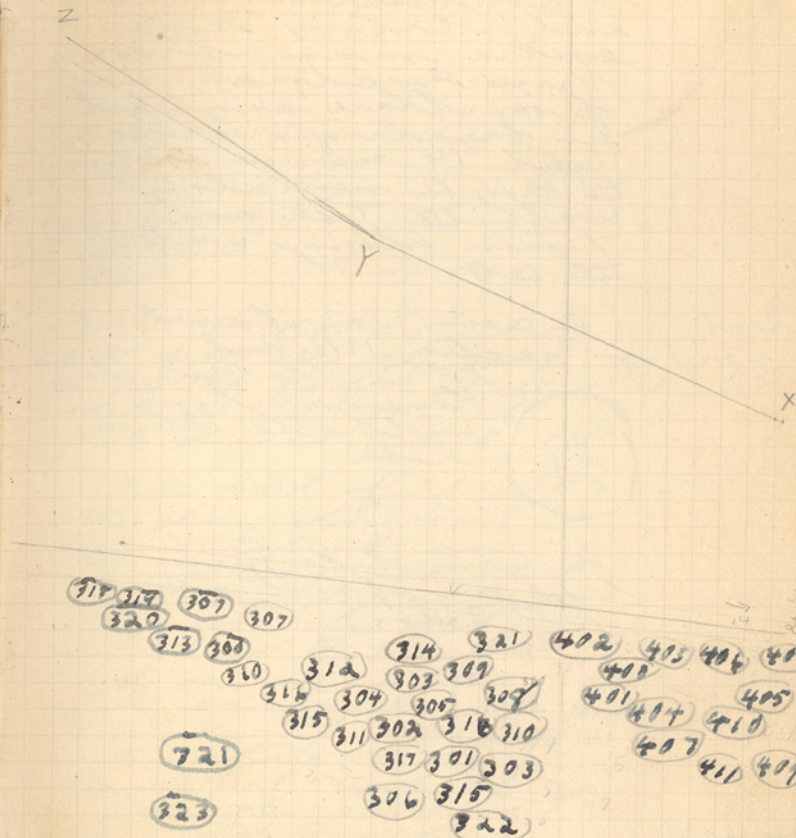
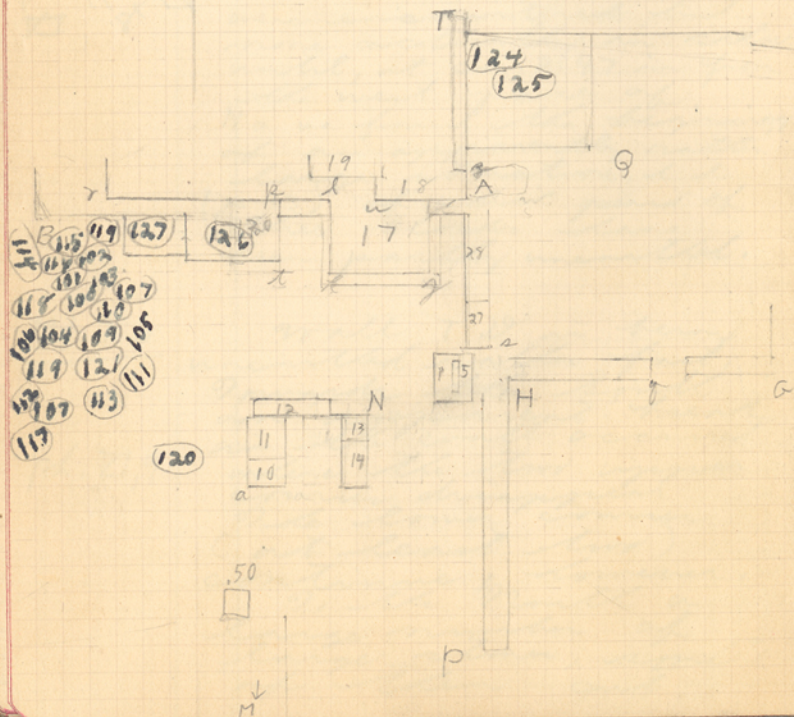
wall-blocks, were encountered. These later gave way to smaller stones. The earth itself is fairly soft. Pot-stands and loom-weights continue to be plentiful; one fragment of a pot at the rim of a large pit or pitthoi, was found.

ph.
VI, 10

Sept 21.

ph.
VI, 11

Section III
 chiefly showing
 part MNT.
 The numbers in
 ink denote stones
 removed by the
 present from the
 spot where found.



Today we decided to concentrate more and, taking some extra man from Boris Goldman and from those engaged in breaking rocks, used 14 men on section III MN, 12 men along wall III T 29 and 7 men along wall III L O.

Sept 22.

A coin was found in section III MN, and 1st in the Colophon houseman type with the flying robe.



A coin-like piece of lead was found along wall T 29.

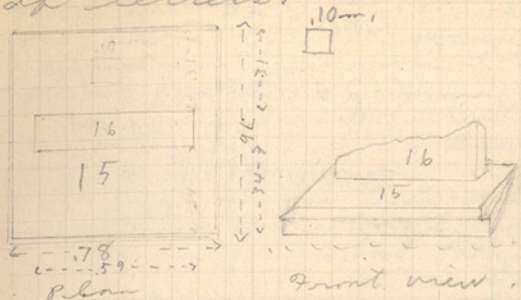


III MN

ph.
VI, 12

Section III MN again produced the large best finds. At 1.46 m. to the north of NA was found a marble base upon which a stele, either an inscription or relief, probably stood. A fragment of this stele was still in situ set into the base, but

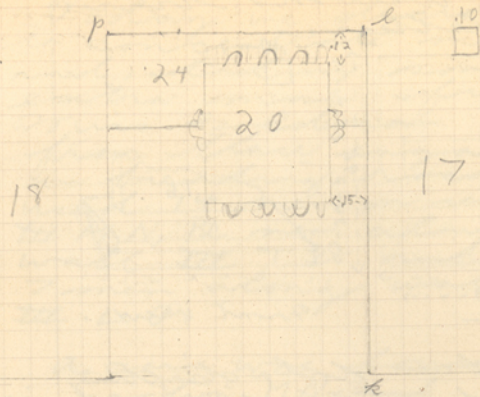
there were no traces of letters.



We have had a drafting of .06 m. from the top. Only a small portion of the stele is left, 1.9 m at the highest point.

Sept 22

The best find of the day, however, was that of an Ionic capital which is the only extant capital one yet found at Colophon and one of the few examples of a piece of superstructure. This capital which is quite similar to the Erechtheion capitals but without its refinements, was found lying in an erect position right beside block 17 (p. 33) and partly resting on the foundations, 24, of this structure. See the sketch on p. 37. It was 1.5 m from KL and 1.2



Sept 22

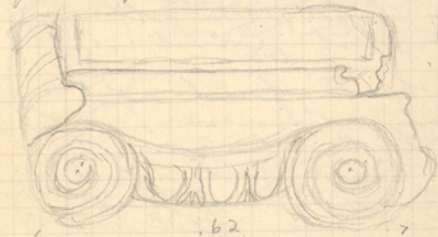
from p. l.

ph. VII, 4

VI, 5

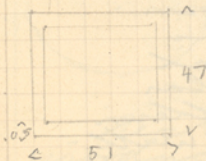
VII, 1

VII, 2

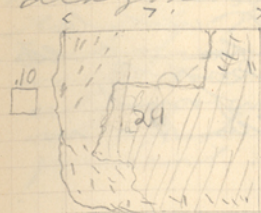


from p. l. The center of the volutes are left plain and these are holes for inserted decorations. The top had a sloping drafter of .05 m running all the way around. It probably dates ca. the middle of the 4th century. The drafter is .035 m in length.

This lone capital is probably a remnant of a colonnade which possibly stood on the terrace above.



Another block of some interest was block 21 found on stone 18. It was set in situ and covers block 18 diagonally.



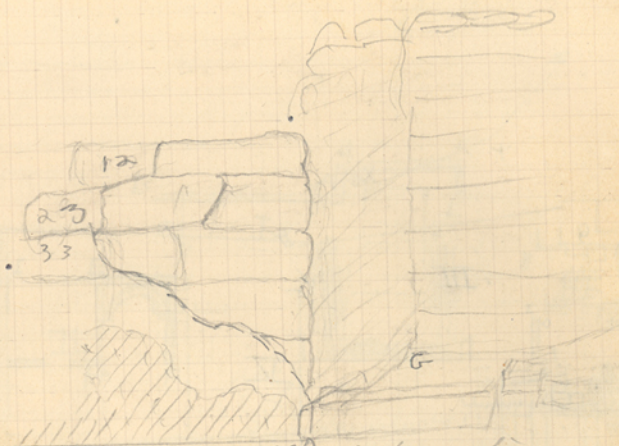
||||| = cut in position.
... = Broken.

The stone is badly slanted but on the top a cutting is visible (See diagram). This cutting is about .07 m deep. The stone is a massive one, being ca. .65 m. thick. We left it in place.

We reached the end of wall # L O 11.40 m. North of point L. Nothing of importance was found. The earth continued hard and was thickly packed with stones. The trench along the wall has not penetrated trench R.S.

Ca 14.00 m. of wall # T 2 have now been uncovered. Things we have not as yet reached the bottom. The last 3.60 m. to the south have had the top two courses missing. It almost looks intentional. The wall is quite regular towards the North, - at full of small stones were encountered here. No more cut stones were unearthed. A large number of bones, all probably animal

E. Denton



wall A before dig.

/// = stucco

we started to clear earth from West wall of Cybele sanctuary IAB. The earth is hard and filled with loose stones and boulders, making the work slow. At 1.50 m. from top of wall was found some stucco adhering to the wall; no color visible. at the base of the wall was found a pavement in a fairly good state of preservation but with no color.

Photographs.

Ib - First dig. Clearing of West wall of Cybele sanctuary IAB.

II, 1 - View of men clearing land, II

II, 2 - General view of west

side of Cybele sanctuary.

Stones 12, 23 and 33 of wall were loose and had to be removed.

Numerous pot-sherds and tile-fragments found at base of wall AB.

Photo: -

II, 3 - West wall, AB, after stones 12 + 23 had been removed, 33 in situ.

II, 4 - General view to S.E.

Found a small piece of bronze on terrace. Also two pieces of a circular object of stone probably a base, 2.57 m. from lower corner of wall, A. $45\frac{1}{2}$ c.m. along base, 26 + $19\frac{1}{2}$.

a bronze pin found near other bronze about 6 m. from corner A.

Stone base



Sept 10

IAB

were found in this region.
Some incised post-steris were found in addition to the usual varieties.

An almost whole small portion of the tre-forked-mouth variety was found near the altar N a m III MN.

Sept 22

ph.
VII, 6

ph.
VII, 7

The men were concentrated still more today with from 13-16 men in III MN, 7-8 in a new post immediately to the North of MN and from 11-13 along wall T D. Work along wall L O was stopped for the present.

Wall T D seems definitely to join the exterior N. wall of the Cybele Sanctuary RV; along the Northern section of the wall a mass of small stones and an occasional cut-stone was encountered; some more bone fragments were found. The majority of the post of the wall is in an excellent state of preservation, in contrast to the Southern portion which gradually peters out, first the two upper courses being missing, as noted before, and finally only a few stones in general alignment but not in situ appear. The true wall may end at a point ca. 18.10 m. to the

Sept 23

III T D

ph.
VII, 12

South of D, at the point where thin micaceous stones appear, one went on ca 19.50 m from D and then worked to the SE with the intention of joining the other two tunnels.

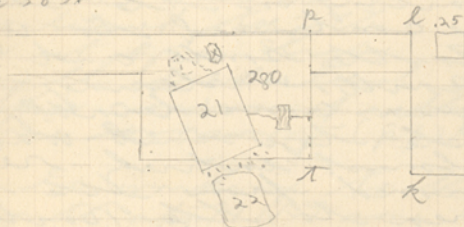
The pot-stands found were mostly from large coarse jar and jubbis.

There were no new developments in M.N. wall u w (p.33) seems definitely to be a terrace wall as block 19, which is quite roughly curved, and looks much like a backer for such a wall. Taken too the stones along wall u w are exposed in the same fashion as those forming the terrace wall I C D. We cleared a good deal of the upper soil to the South of section MNT.

We have now progressed far enough along structure A (p.33) to see that the lower course 17 only projects to the North 1.90 m where it returns at point j and joins the second course 18 which is .25 m in height. Course 18 has not yet come

an end, however.

Below is a sketch showing the position of stone 21 on block 20 (p.38).



About 10m back of block 21 is another stone, only a small portion of which is showing, in perfect alignment with stone 21 which is obviously not in situ. Block 22 continues the alignment to the East. It, however, was removed by careless workmen and but sloppily replaced.

42 includes part of the area to the East and South of wall T D.

Sept 23

Sept 23

III MNT

x. I have been using the term MNT rather loosely for the whole section opened up around MNT. I shall hereafter call it MNT as it

Still concentrating all the men on the one section ~~III~~ MN T, some 29-32 in all, not counting the 6-8 working on the case, we continued to work to the South and North, widening the area considerably. The top soil was almost entirely removed from the new area to the North. We deepened the section along wall T 29 and found that the wall continued to the South although with only one course for the most part, a lower course, hitherto not uncovered.

We also discovered, while deepening the area to the East of T & Z (p 33) that the stile 15 (pp 36, 33) was a much deeper base than at first supposed, a full .225 m. below the drafting. The drafting only continues on the front and sides. The back was left plain and evidently intended to be set against something, presumably a wall. The stile is tilted, not being horizontal to the ground and is buried off across with the

Sept 24

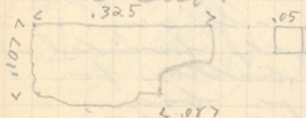
III MN

ph.
VII, 8ph.
VII, 9

wall of T & Z A, leaning slightly to the South. Course 18 (p 33) in return to the West 1.71 m. from W. at part A. The wall in the continued to the West by a higher wall of at least three courses of rather fine masonry. (p 33)

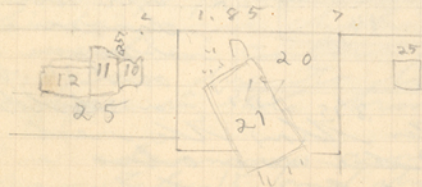
Sept 24,

In working to the South of MN T some fragments of marble were found ca 2.00 m S of block 20 (p 33), only one of which was cut.

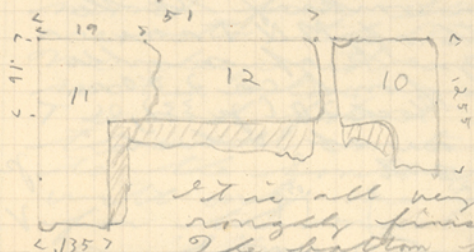
ph.
VII, 10
" 11
" 12

The other two fragments of an irregular shape measured ca. .23 X .09 m. and .13 X .10 m. respectively.

Directly to the South of block 20 (p 33) resting on block 25 were found three rather interesting fragments.

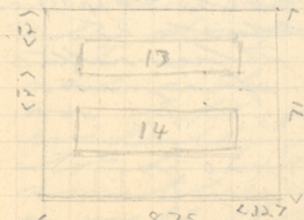


When taken out a quantity of lead was discovered, some still in place in block 18. Stones 12 and 11 put together and 10 belong to the same object which appears to be some sort of a base upon which some square or rectangular object was placed.



It is all very roughly finished. The bottom for the most or base in .105 m. from the upper surface. The total thickness is ca. 1.18 m.

Block 21 was removed from the base for the purpose of examining it more closely.

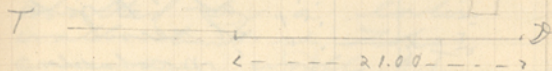


On the bottom side these markings were dimly discernible, stones 13 and 14 being a little higher than the rest.

There were also two clump tubes on the other side, ca. 0.5 m. from end, lower corner.

We continued work on the MNT with from 29-31 men actually digging and about 47 in all.

Wall T2 still continues Southward and looks as if it will join wall A.T. 21.00 m. from the face of the wall is set back .35 m.



Two bronze coins with.

an anchor on the reverse and a profile of a youth on the obverse were found near the tent on either side of the anchor in an inscription which may read [B] AELAE[?] S

[A] H+LOX[?] S

It is in a good state of preservation. The obverse is distinct by red in colour, I suppose due to the copper in the bronze.

I am cleaning around the stela 15 and structure A & if we found a

III.T.D

Sept 26

ph.
V III, 1
11, 2
113

wall .08 west of the stile which, practically in alignment with wall TA, gave to A. Block 27 (p. 33), that nearest the stile is of limestone but block 28 is of marble. From its

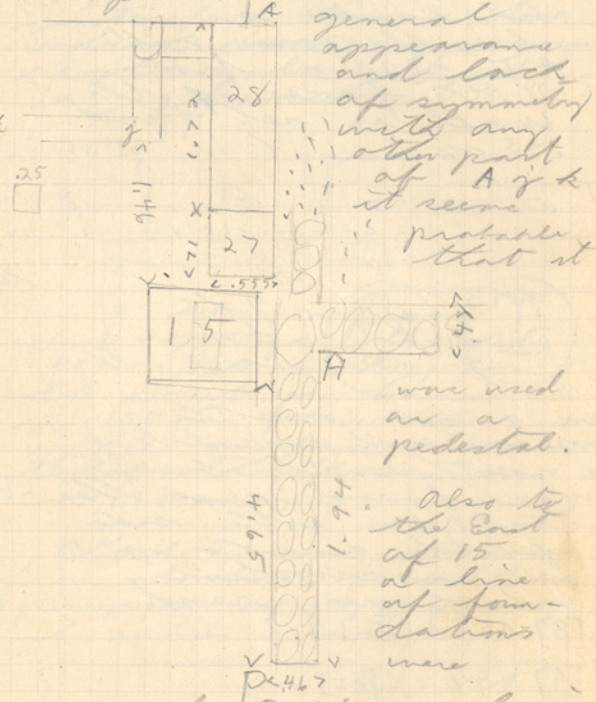
Sept. 26

III MN

ph.

VIII, 4

II, 5



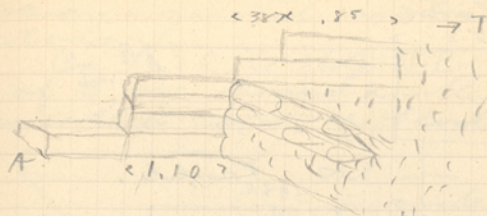
were used as a pedestal.

also to the East of 15 a line of foundations were

exposed. This wall is quite rude; it turns to the S. at point where it continues for over 2.00 m.

Wall AT still continues to the W. but, 1.10 m. from q (p. 33) another wall, which is naturally of later

construction, abuts it.



This is a parallel to the terrace wall IC D which is also abutted by a later wall but in this case our wall AT is of quite fine masonry.

In the region to the East and North of N.H. the soil is a kind of white gravel. Immediately below the wall H q it is largely a stone-filled with but few sands.

In proceeding to enlarge the South side of this section it was necessary to clear some 2.00 m. of earth. This earth was full of stones of all sizes, quite a few of them cut blocks but no masonry once appeared. Ca. 2.00 to the

Sept 26.

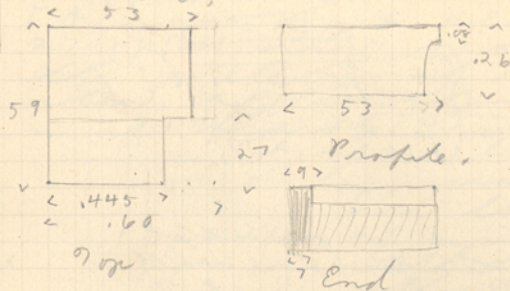
ph.

VIII, 6.

ph.

VIII, 7

SE of point B. was found a rude cornice block.



III MN

Sept
26.

The strange thing about it is that a corner is cut east, presumably for fit another block but unusual in a cornice. The cutting varies in thickness, being .09 m at the top of the block and only .07 at the bottom. It was probably succeeded.

ph.

VIII, 1

11/10

See p. 56.

11/11

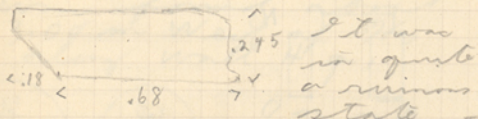
23

11/12

The depth of the cutting varies from .09 - .03 m, and the block also varies in thickness from .26 - .17 m.

A large quantity of crystal was found in this region; also a good many bones chiefly teeth, some of them human.

we used from 29-31 men on the same general section today. Ca 11.50 to the NE of B was found another smaller cornice block.



It was in quite a ruinous state - but it was possible to get approximate dimensions. The moulding of .08 m was the same as the other block and the width of .45 is about the same. The other dimensions vary. It was also of porous stone and was intended to be shrouded.

This stone idea is confirmed by a crowning block found in almost the same spot.

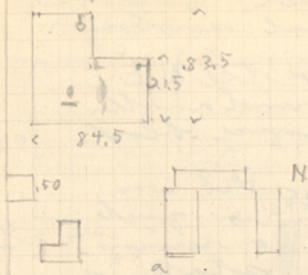


This block which has an overhang of .04 m, has some stones still preserved in the front of the block.

Further to the S. in the same section, just to the SW of N a was found a large corner-stone. It has at least two distinct change marks and one

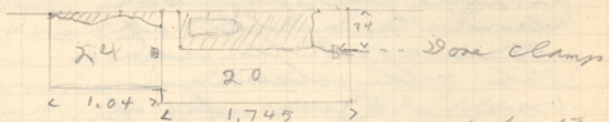
Sept 27

pyr-hole.



Sept.
27.

We tilted over block 33 and discovered a curious base underneath.



Stone 20 is well cut but the cutting certainly doesn't fit stone 21 or does the size of the block. The cutting on stone 24 is most peculiar; it almost looks like a break but a piece of lead was found in it. The lower hole to the right of the same block is also puzzling as there is no corresponding hole on block 20. It almost looks renewed.

By working along walls T 2 and AT some more we definitely discovered that the second wall abutting on AT gave wall T 2 and is probably the same wall. Lots of tiles were found in this region but few sherds.

Today we used 35 men actually digging in finishing up section III M N + 2.

A bronze coin was found about 3.00 m West of H, along wall H 9.



On one side is a stag with its

head turned and on the other a tree. Near the stag are the letters

OAKO

It is the Ephem type.



Directly under wall T 2, and

along wall

AT was found a curious button-like object. It is of lead and may be a rivet.

Some interesting pot-sherds were found in the general clearing up process of section III M N + 2.

70 the North near wall H 9 was found quite a large fragment of the bottom of a pithos ca. 17 m high



Sept 28

Along wall A & B
was found a curious
fragment of
terra-cotta.
It was prob-
ably the bottom
of a circular
pot divided
into com-



partments, perhaps for
ladies' jewel case.
Three compartments are
visible in the fragment,
1, 2, 3. The most interesting
thing, however, is
that it is obviously
an imitation of metal
work since even the
nail-heads appear
on the top of the
divisions between the
compartments.

Two interesting
bits appeared in
section B & C, one
part of a lamp,
like that
early example
found along
wall IV & L.



The other was a
bit of terra-cotta
with a curious design
like a mason's mark.

It is probably
just an unusual
design on a
pot.



In cleaning up
section H F we found

that wall H of stone
at ca. 2.60 m. North
of H, leaving a sort
of door there and
going on to A.
We also uncovered
I F (p. 34) which
almost looks like
a stone drain except
that it is blocked
by a stone at its
Western end. It
was probably a
rough wall the
center of which
was filled with
rubble. In section
of F there were
traces of a
cement pavement.
The earth in the
region was mostly
a stone full mass
with a good many
pot-sherds of
the common variety
found elsewhere,
some of them
incised. It was
here that the
Opisthion corn was
found (p. 54).

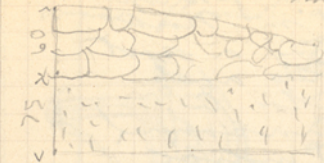
In further in-
vestigation wall
A & T was found to
continue to the
West at least one
corner past point
T. Wall A & B
is really only
a wall for 2-3
corner, at about
.60 m, the bottom
part being of

Sept. 28.

Sept. 28.

ph.
IX, 1

earth. This probably means that when the wall was added the ground level was ca. 1.75 m above point A.



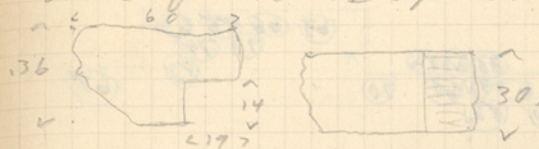
We cleared the earth further to the S. and discovered that the lower course of XA only goes 1.35 m. past point B and then returns ca. 1.76 m to meet the line of backing blocks.

The cutting on the stone, where 12.7 was found (p. 33), that we decided to investigate further. One discovered that its depth, .32 m precludes the possibility of its having sculpture on the other side. Also the fact that lead was found in the cutting confirms the fact that it is at present in situ, despite the single change to the right. There is a very nice stone clamp still in place on stone 17 (p. 51).

We continued to dig deeper along wall T2. We found a large number of bones, chiefly teeth in this region. Section A+Q still continues to produce

a great quantity of tiles; also a large number of rocks.

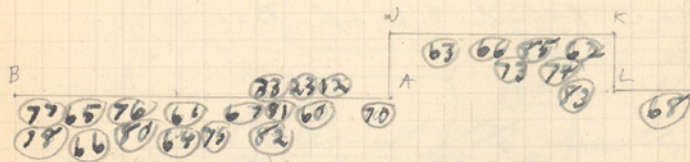
Another cut-block was found S.E. of B.



Top side
It is cut back to a depth of .19 m.

Sept. 28,

I



This chart on a smaller scale besides giving section B A J K, not shown on the larger chart (p. 33) explains the numbering of the blocks.

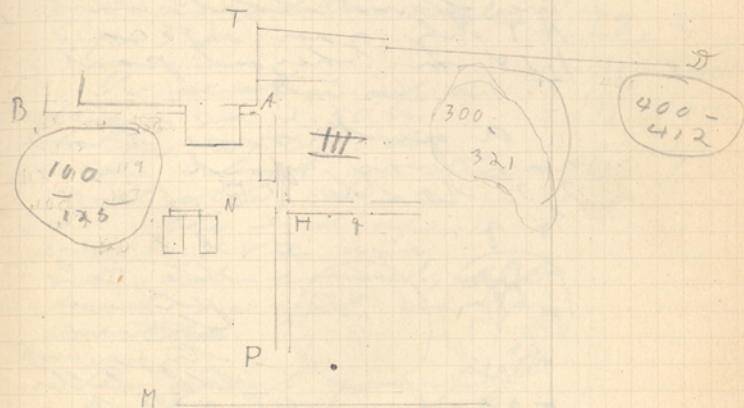
Stones 60-85 = Wall I B J K L.
(33) 23 and 12 were taken out of the wall earlier, p. 47.

Stones 100-125 in III B T N.

" 300-321, III T D, 15.00m and over from D.

Stones 400-412, III, T D, near point D.

1.00

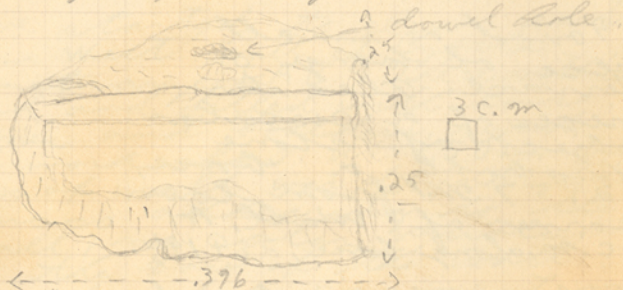


Sept. 12 -
Continued clearing earth
along wall I, A.B. Seven men.

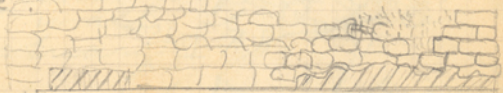
Photograph.
#5 - View of wall I, A.B.
at beginning of second
day.

Also started clearing
earth from temple of
Aesculapine, II, E.F. Miss Cots took.

Found a cut stone 8.60 m. to
left of A. It has a smooth rusti-
cation extending .36 m. from
edge of upper surface and .005 m.
in depth. The upper surface has
a dovetail hole. The dimensions
of the block were .396 X .25
X .25 m., though it is now
in a fragmentary condition.



The cuttings show that it
did not belong to wall A.B.
which had no similar cuttings,
unless it was a reused
block.

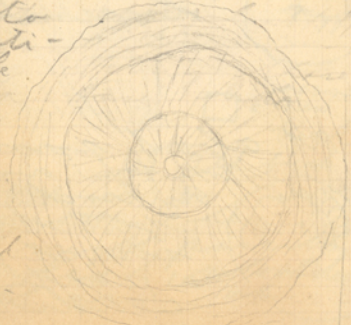


General appearance of
wall when completed " = stones

The earth continues
to be very hard and
is thickly packed
with stones. Indeed,
after we reached a
point about 6.00 m.
south of A, a virtual
stone-fill was
encountered which
made progress very
slow. There were very
few cut stones among
the number, some of
them being from the
wall A.B. The number
of tiles found in
this region almost
seems to suggest
that the terrace
A.C. was roofed
though it is possible
that they fell
down from the
terrace immediately
above.

Another sur-
prising feature in
the number of
loom-weights
uncovered at the
scene an improbable
place for the
purpose of spinning.

Pot. sherds con-
tinue to
be plenti-
ful, the
most
common
variety
having
a base
this
shape and
shape.



Sept. 12

I A B

Today with about 29 men we continued to clean up section III MNTD.

we finished cleaning up the south angle of the area and besides a few pot sherds, found nothing.

By digging still further to the East we observed that wall AT only goes on ca. 1.18 m. beyond point T. Wall T & B

a quite nice bronze coin was found ca 2.00 to the NE of wall T & B.



It is the Colophonian Larion type, with the letter KOLAO below. The profile is especially nice.



A very small coin, partly destroyed, but with a lead in profile, badly distorted, was found in about the same place. It is silver. But stay of Ephesus?

After the debris and earth was cleared from around the S. end of wall T & B, I discovered a curious

thing. The first 7.35 m. of the wall T & B joined part which adjoins AT, and which is some .35 m back of the rest of the wall, is also not in alignment with it. This section runs off at rt. angle to wall AT while the rest goes off in an oblique angle. (p. 33)

A section of a drain ca 2.50 m. below wall T & B and about in line with the drain at the end of wall X & Z was also discovered, but not as yet unearthed.

A great quantity of tile was found around wall AT; the usual pot sherds appeared.

Right near the drain an elliptical piece of stone presumably part of a column drum was found.



The stone is badly damaged.

ph.
IX, 2
" 3
" 6
" 7

One of the car
men found a
new little trepost-
mounted potter with
only the handle
missing

No 1, found on June 6, 1922.

ΝΕΡΤΜΑΙΑΝ ΔΡΟΥΑΡΤΕ ΜΙΣΙΩΝΟΣ ΕΔΟΞΕΝ ΤΗ ΒΟΥΛΗ
ΚΑΙ ΤΩ ΙΔΗ ΜΩΙΑΡΤΕ ΜΙΔΩΡΟΣ ΕΨΗΦΙΣΕΡΝΩΜΗΤΩΝ
ΕΡΙ ΜΗΝΙΩΝ ΑΝΑΞΙΠΟΛΙΝ ΚΑΙ ΗΡΑΚΛΕΙΔΗΝ ΠΑΙΔΑΣ
ΠΟΛΛΟ ΣΕΡΥΘΡΑΙΟΥΣ ΑΝΔΡΑΣ ΑΓΑΘΟΥΣ ΟΝΤΑΣ
ΚΑΙ ΕΥΝΟΥΣ ΤΩ ΙΔΗ ΜΩΙΑΡΤΕ ΙΚΟΛΟΦΩΝΙΩΝ ΕΙΝΑΙ ΠΟΛΙΤΑΣ
ΚΑΙ ΠΡΟΞΕΝΟΥΣ ΚΟΛΟΦΩΝΙΩΝ ΔΕ ΔΟΣΘΑΙ ΔΑΥΤΟΙΣ
[ΡΡ] ΔΕ ΔΡΙΑΝΕΝ ΤΟΙΣ ΑΓΩΣΙΝ ΚΑΙ ΕΦΟΔΟΝ ΕΡΓΑ
Σ ΚΑΙ ΤΗΝ ΒΟΥΛΗΝ ΚΑΙ ΤΟΤΗ ΔΗΜΟΝ ΠΡΩΤΟΙΣ
[ΜΕΤΑ] ΤΑΙΕΡΑ ΚΑΙ ΕΙΣ ΡΑΟΥΝ ΚΑΙ ΕΚΡΛΟΥΝΤΑΣ ΥΛΕΙ ΚΑΙ
ΡΑΣ ΓΟΝΔΕΙ ΚΑΙ ΕΜΠΟΛΕΙΜΩΝ ΚΑΙ ΕΝ ΕΙΡΗΝΗ ΚΑΙ ΑΤΕΛΕΙΑ
[ΕΞ] ΑΓΩΣΙΝ ΕΣΟΙΚΟΝ ΤΩΝ ΝΑΥΤΩΝ ΚΑΙ ΤΑΛΑΥΓΑΡΧΕΙΝ
[ΑΥΤΟΙΣ] ΚΑΙ ΕΚ ΤΟΝΟΙΣΟΣ ΑΚΑΤΟΙΣ ΑΛΛΟΙΣ ΠΡΟΞΕΝΟΙΣ ΚΑΙ
[ΠΟ]ΛΙΤΑΣ ΔΕ ΔΟΣΘΑΙ ΕΙΝΑΙ [ΔΕ] ΤΑΥΤΑ ΚΥΡΙΑ ΕΑΝ ΔΙΑΥΗΦ
[ΣΘ]ΗΝ ΑΦΟΤΙ ΕΨΗΦΙΣΤΑΙ ΑΝΑ ΠΡΑΥΑΙΔΕΤΟΥ ΗΦΙΣΜΑΕΙΣ
[ΕΣΤ]Η ΛΗΝ ΑΙΘΙΝΗΝ ΚΑΙ ΕΤΗΣ ΑΙΕΙΣ ΤΟΙΕΡΟΝ ΤΗΣ Μ...

8 mm also begin ΜΕΤΑΙΕΡΑ see
Lafer 398 Euboean Band

(Not correct)
ss.

1. ἄφ' ἄντοῦ καὶ ὁ ἀδελφὸς
 2. γενόμενος καλλιδαμάς
 3. ἡ τροφὴ καὶ ἐοφίε δόντος
 4. ἡ ἀρμενὴ τῆς ἡνὸς κα
 5. ἡ ὁρὸς ὁραεὺς μῆδεὺς
 6. ἀδὸς καὶ ὁ ἰαδελφοί
 7. ἀδὸς ἐκατά, ὁ
 8. ἐλφὸς ἀγολλῶν ὁ φανῆς
 9. ἀλῶν ἰοῦ ἐς ὕμμαλος
 10. ἀσὶ ἀλῶν ἰοῦ
 11. ῥοεῖ ῥοῦ ῥοῦ
 12. ἰδῆς ἐκατῶε μου
 13. ἡ ἐφ' ἡς
 14. ἡ
 15. ἐστράτωνος
 16. κατὰ τῆς
 17. ἡ ὁρὸς
 18. ὁ ε

(MI) IX OΣ
 ἰοῦ
 ἡ ὁρὸς
 ἡ ὁρὸς

1. ἀπολλῶν ἰοῦ ἀρτεμίδωρο
 2. ἐρὸν ἡ δῆς κωνάιοι
 3. μῆτρος ὁρὸς ἀπὸ ἀλῶν ὁρὸς
 4. μῆτρος ὁρὸς ἐῖ
 5. ἐκατὸς ὁρὸς
 6. ἰοῦ ὁρὸς ὁρὸς
 7. ἡ ὁρὸς ὁρὸς
 8. τῆς φτοεῖς ὁρὸς
 9. καὶ ὁρὸς ἀγολλῶν ὁ φανῆς
 10. ἐκὼς ἰοῦ ἀγολλῶν
 11. δῆμῆτρος ἀρτεμίδωρος
 12. ὁρὸς ὁρὸς ὁρὸς
 13. ὁρὸς ἀρτεμίδωρος
 14. ἐστὶν ὁρὸς ὁρὸς
 15. ἀδελφοὺς ἐκὼς
 16. καλλιμῶντος ὁρὸς
 17. ἰοῦ ὁρὸς ὁρὸς
 18. κρονίος ὁρὸς ὁρὸς
 19. ἐκατὸς ὁρὸς ὁρὸς
 20. ἰοῦ ὁρὸς ὁρὸς
 21. κῶρ ὁρὸς ὁρὸς
 22. ἀρτεμίδωρος ὁρὸς
 23. ἀρτεμίδωρος ὁρὸς
 24. ἰοῦ ὁρὸς ὁρὸς
 25. ὁρὸς ὁρὸς
 26. ὁρὸς ὁρὸς
 27. ὁρὸς ὁρὸς
 28. ὁρὸς ὁρὸς
 29. ὁρὸς ὁρὸς
 30. ὁρὸς ὁρὸς
 31. ὁρὸς ὁρὸς
 32. ὁρὸς ὁρὸς
 33. ὁρὸς ὁρὸς
 34. ὁρὸς ὁρὸς
 35. ὁρὸς ὁρὸς

Incorrect

Photographs.

- C-293 I 6 - First dig; clearing of West wall of Cybele sanctuary I A B.
- C-294 # 1 - View of men clearing brush III.
- # 2 - General view of West side of Cybele sanctuary.
- C-295 # 3 - West wall I, A B after stones 12 and 23 had been removed; 33 still in situ.
- C-296 # 4 - General view to S. E.
- C-297 II 5 - View of wall I A B at beginning of second day, Sept 12.
- C-298 II 6 - Stone fill and wall I A B, Sept 14.
- C-300 III 1 - View of wall III X Y at beginning of dig, Sept. 14.
- C-299 III 2 - View of wall III M N just after beginning to clear earth from north side, Sept. 15.
- C-301 III 3 - Wall I A B after earth has been removed from east side; section showing stucco panel, Sept. 15.
- C-302 III 4 - Stucco panel of wall I A B.
- C-303 III 5 - Wall III L O at

beginning of second day, Sept 16.

- C-304 III 6 - View of corner of wall III X Y. Sept 16.
- C-305 IV 1 - General view of Cybele sanctuary from S. E.
- C-306 IV, 2 - Asclepeion, dance hall, and wall A B. Miss Dorr on wall.
- C-307 IV, 3 - View of drain, III, X Y.
- C-308 IV, 4 - General view to N. W.
- C-309 IV, 5 - " " to East.
- C-308 IV, 6 - Men removing boulder from above wall L O.
- C-309 V, 1 - General view of wall B A J K L. Sept. 17.
- C-310 V, 2 - Altar from N. E showing blocks with semic hole and clamp holes.
- C-311 V, 3 - Cybele Sanctuary from N.
- C-312 V, 4 - View of Wall Z Y X from point Z.
- C-313 V, 5 - General view to N. from hill of Caloptera. Photograph labelled: Illus Cox's section back of Asclepeion.
- C-314 V, 6 - Breach M N, showing base a. e.
- C-315 V, 7 - Rock fill near wall III L O, Sept 19.
- C-316 V, 8 - Looking for inscriptions in I E C, Sept 19.

V, 9 - #EC, Sept 19, close-up.

C-317 V, 10 - View of Trenches MN and RS from east, Sept. 19.

C-318 V, 11 - View of # RS and # LO, Sept. 19.

C-319 V, 12 - Wall XY from N.

C-320 V, 1 - View of rock pile, wall LO, etc from SE. Sept 20

C-322 V, 2 - Work in # MN, morning of Sept. 20.

C-323 V, 3 - Wall TD, morning of Sept. 20.

C-324 V, 4 - Section East of Wall TD showing boulders and cut stones, Sept. 20.

C-325 V, 5 - Characteristic cut stone, some with dowel and clamp like found E of wall TD.

C-326 V, 6 - Finding of first inscription in section # EC, Sept 20.

V, 7 - Drain, III + IV (N. 2)

C-327 V, 8 - Section # MN showing joining of the trench and trench RS. Two well-cut blocks, probably in situ beginning to appear. Sept 21.

C-328 V, 9 - View of wall III TD, North end.

C-328 V, 10 - Drain, III + IV, Sept 21

C-329 V, 11 - View of # MN, morning of Sept. 21.

C-330 V, 12 - View of # MN showing broken stile in situ, Sept 22

C-332 VII, 1 - Ionic capital as found in section # MN. Sept 22.

C-333 VII, 2 - Ionic capital ".

C-334 VII, 3 - View of # MN from South showing men breaking sod to North. Stale covered with earth. Sept. 23

C-334 VII, 4 - Ionic capital. Sept. 23.

C-335 VII, 5 - Under side of Ionic capital. Sept 23.

C-336 VII, 6 - View of wall III + IV from South showing section with two upper courses missing.

C-337 VII, 7 - General view of excavation of section III from S.W. Sept 23.

VII, 8 - MN, view from South showing work along West side of Trench. Sept 24.

C-338 VII, 9 - MN, West + North side of trench. Sept 24

C-339 VII, 10 - MN, Close-up of West side showing wall W W turning and continued by another wall to West, Sept 24

- C-331 VII, 11 - MN, view of SW side showing new building block being uncovered. Sept. 26.
- C-340 VIII, 12 - MN, General view from SW of whole of section III, Sept 26.
- C-342 VIII, 1 - Close up of base for pedestal(?) found in MN. Sept 26.
- C-343 VIII, 2 - General view from SW of III MN T showing appearance at end of Sept 26.
- C-343 VIII, 3 - General view of MN from SW; Miss Esoldman and I inspecter in intimate conversation. Sunset Hour. Sept. 27.
- C-345 VIII, 4 - View of stone 33 which is lying across on stone 20. Sept. 27.
- VIII, 5 - Same, taken through hole in dirt wall representing section III from old Dig. I inspecter in background. Sept. 27. (N.C.)
- C-346 VIII, 6 - View from base N. of stone, stones 27, 24, etc. Sept 27.
- C-347 VIII, 7 - South side of MN showing wall of 24 returning to West.
- C-348 VIII, 9 - MN, close up of block after its removal showing base by wall. Sept 27.
- C-349 VIII, 10 - MN, view of wall AT

- showing where wall T 29 joins it at T. Sept 28.
- C-350 VIII, 11 - MN. Same, from NE.
- C-351 VIII, 12 - MN, Scene showing man removing boulder from above wall T.D. Sept 28.
- C-352 IX, 1 - MN, View from S. Sept 28.
- C-353 IX - 2 - Dance Hall from S. Sept. 29.
- C-354 IX, 3 - General view of Azulel precinct from S. Sept. 29.
- C-355 IX, 5 - View of wall AT showing two abutting walls. Sept. 29.
- C-356 IX, 6 - Northern part of wall T 29 showing how it is stepped back. XV in background. Sept. 29.
- C-357 IX, 7 - General View from East; Laying of rails. Sept. 29.

7.
Sept 13

we continued digging in trench IAC with the same seven workmen though we now have a new pickman, our "antique" seeder having left. The same stone fill continues and a quantity of pot sherds, tiles and an occasional loom weight were found.

At about 10.00 m. south of A our first coin was found.



It was badly encrusted but a head in profile, presumably wearing a fillet, is discernable. It is probably an Antiochian coin. It was found in the rock fill quite near the surface of the concrete pavement.

Another bronze coin found about 11.00 m. south of A.



Reverse

On the obverse is the Calophonian Herakles.



At about same spot was found another Antiochian coin, this time badly struck and in a partly broken condition.

8

A marble fragment, unfortunately broken in four pieces by careless workmen was found along wall AB about 11.50 m. to left of A.

Sept 13.



Obverse



Reverse

□ = New break
▣ = Old break

On reverse is a "cannon groove" of the obverse might possibly be the head, shoulder and left arm of