

V, 3



# Acte 3<sup>ois</sup>

C'est le petit jour en hiver,  
matinées finissent de sonner :

Rideau!

Cloches! (mi-la#) (comme au 2<sup>e</sup> acte).

De très loin un cor solo dans les coulisses!

*Corno I solo*  
De très loin

Trois coups lents et espacés frappent à la porte du Couvent!  
Au troisième coup, celle-ci roule d'elle-même et silencieusement sur ses gonds, les deux battants s'ouvrent tout grands sur la campagne blanche déserte et désolée, et parmi les tourbillons de neige qui fouettent le seuil, s'avance hagarde, exténuée, méconnaissable, celle qui fut autre fois sœur. Béatrice! Devant la porte ouverte, elle attend un instant, puis ne voyant personne, tâtonnante, chancelante elle s'approche

*Oboe I solo*  
Mais le corridor est désert, elle fait encore quelques pas craintifs, et apercevant l'image de la Vierge, pousse un cri ou se mêle ou ne sait quel bas et vain espoir de délivrance . . .



# Hayes!

Andante

(Comme au <sup>1<sup>er</sup></sup> acte).

1<sup>er</sup> Violon

2<sup>oncl.</sup> Violon

Altos

Violoncelles

Contrebasses.

Beatrice

A tempo



Handwritten musical notation for a piano accompaniment, featuring multiple staves with notes, rests, and dynamic markings.

~~Handwritten musical notation for a piano accompaniment, featuring multiple staves with notes, rests, and dynamic markings. This section is crossed out with a large 'X'.~~

Béatrice  
me-re me voi-ci !  
ne me re-pous-ses pas je n'ai plus rien au

Handwritten musical notation for a vocal line, featuring notes, rests, and lyrics. Below the vocal line is a piano accompaniment with notes and rests.



1

clari  
cl. B.  
Bass

Cor Anglais

Handwritten musical score for woodwinds. The top system includes staves for Clarinet (clari), Clarinet in B-flat (cl. B.), and Bassoon (Bass). The woodwinds play a melodic line with triplets and slurs. The Bassoon part includes the instruction *p espressivo*. The Cor Anglais part is marked with *p* and *espressivo*. The score is written in a key with one flat (B-flat) and a 3/4 time signature.

Beatrice

mon- de

Je-s-pe-rai-s vous re-voir et je re-viens trop-

Handwritten musical score for vocal parts. The bottom system includes staves for Beatrice and another vocal part. The vocal parts have lyrics in French. The accompaniment consists of piano chords and arpeggiated figures. The score is written in a key with one flat (B-flat) and a 3/4 time signature.





Handwritten musical score for the first system. The staves include:

- Flute (Fl.)
- Oboe (Ob.)
- Clarinet (Cl.)
- Clarinet Bass (ClB.)
- Bassoon (Bam.)
- Corn I (Corm I)

The music is in 4/4 time. The first staff (Fl.) has a key signature of one flat and a common time signature. The second staff (Ob.) has a key signature of one flat and a common time signature. The third staff (Cl.) has a key signature of one flat and a common time signature. The fourth staff (ClB.) has a key signature of one flat and a common time signature. The fifth staff (Bam.) has a key signature of one flat and a common time signature. The sixth staff (Corm I) has a key signature of one flat and a common time signature. The music features various musical notations including notes, rests, and dynamic markings such as *sol*, *cres*, and *p*.

*Beatrice*

tard mes yeux vont se fermer je ne vois plus votre sou-ri- - re

Handwritten musical score for the second system. The staves include:

- Vocal (Beatrice)
- Flute (Fl.)
- Oboe (Ob.)
- Clarinet (Cl.)
- Clarinet Bass (ClB.)
- Bassoon (Bam.)
- Corn I (Corm I)

The music is in 4/4 time. The vocal part (Beatrice) has a key signature of one flat and a common time signature. The instrumental parts (Fl., Ob., Cl., ClB., Bam., Corm I) have a key signature of one flat and a common time signature. The music features various musical notations including notes, rests, and dynamic markings such as *pp*, *cres*, and *mes*.



2

Handwritten musical score for woodwinds and strings. The woodwind section includes parts for Flute (Fl), Oboe (Ob), Clarinet (Cl), Bassoon (Bs), and Cor Anglais (Cora). The string section includes Violin I (Vn I), Violin II (Vn II), Viola (Va), Violoncello (Vcl), and Double Bass (Cb). The score is written in a single system with multiple staves. The notation includes various musical symbols such as notes, rests, and dynamic markings like *pp* (pianissimo).

*Geatrice*  
mes mains me semblent mor-tes quand je les tends vers vous.  
je ne sais plus pri-

Handwritten musical score for voice and piano. The voice part is written for a soprano, and the piano part is for a grand piano. The score includes the lyrics in French. The notation includes notes, rests, and dynamic markings like *pp* (pianissimo).



2



Handwritten musical score for a large ensemble, featuring multiple staves. The notation includes complex rhythmic patterns, accidentals, and dynamic markings. Key markings include:

- C. Aug.* (Crescendo Augmentando)
- pp* (pianissimo)
- Dolce espressivo* (Sweetly expressive)
- corni III* (Horns III)
- Sourdines* (Mutes)

*Beatrice*  
 -er, je ne peux plus par-ler j'ai ver-sé tant de larmes que depuis bien longtemps j'ai per-du le cor

Handwritten musical score for a large ensemble, featuring multiple staves. The notation includes complex rhythmic patterns, accidentals, and dynamic markings. Key markings include:

- unis* (unison)
- 3* (triplets)
- 5* (quintuplets)
- 3 1* (triplets and firsts)







Handwritten musical score for woodwinds and strings. The score is written on multiple staves. The woodwind section includes parts for Oboe (oboe), Clarinet (cl.), Bassoon (Fagotti), and Cor Anglais (el 13). The string section includes parts for Violin I (vln I), Violin II (vln II), Viola (vcl), and Cello/Double Bass (cel/bas). The score features various musical notations including notes, rests, and dynamic markings such as *ppp*, *poco*, and *sf*. There are also some handwritten annotations like "copiera." and "do."

Handwritten musical score for vocal and instrumental parts. The vocal part is for Séatrice, with lyrics: "dis un nom qu'il ne faudrait jamais redire !". The instrumental parts include Violin I (vln I), Violin II (vln II), Viola (vcl), Cello/Double Bass (cel/bas), and Harp (harp). The score features various musical notations including notes, rests, and dynamic markings such as *ppp*. There are also some handwritten annotations like "ôtez les sourdines" and "vous ne reconnaîtrez".



*Solo I*  
*mf espressivo molto dolente*

Flutes  
1  
2

Oboi  
1  
2

C. Angl.

Clarinets  
1  
2

Cl. B.  
in E

Fagotti  
1  
2

*Béatrice*  
pas vo-tre fil-le vo-yez dans quel état l'ont

otéz les sourdines

otéz vite les sourdines

*unis*





*Flaut.* *Solo.* *en dehors. espressivo dolente*

*Viol.* *pp* *Dim.* *molto pp* *ppp*

*Viol.* *pp* *Dim.* *molto pp* *ppp*

*Viol.* *pp* *Dim.* *molto pp* *ppp*

*Viol.* *pp* *Dim.* *molto pp* *ppp*

*Béatrice*

*mi-se l'Amour et le pe-ché et tout ce que les hommes appellent le bon-heur! -*

*Divisi* *pp*



Handwritten musical score for woodwinds and horns. The staves are labeled on the left: *clB*, *Fagotti*, and *Corno*. The notation includes various musical symbols such as clefs, key signatures (sharps and flats), and dynamic markings like *cres.* and *poco a poco*. A red circled number '5' is written above the first staff. The score is written across four measures.

Voi-la plus de vingt ans que je vous ai quit-té - e

Handwritten musical score for voices and piano. The staves are labeled on the left: *altos*, *tenor*, and *cello*. The notation includes musical notes, rests, and dynamic markings. A red circled number '5' is written below the first staff.





[illegible]

*Béatrice*  
et si Dieu n'aime point que les hommes soient heureux il ne m'en voudra pas - car

*cresc.* *f*

*Dim.*

*cres.* *mf*

*Dim.*







phr.  
 oboi.  
 clar.  
 cb.  
 Fagb.

poco marc.  
 MF  
 rall.  
 tempo.  
 rall.  
 tempo.  
 rall.  
 tempo.  
 rall.  
 sur

come. I senza sordina  
 pp b $\flat$  b $\flat$

Béatrice  
 sœurs me permettent de tomber ou je tombe elles savent sans doute et la bas dans la ville le scan-

1<sup>re</sup>  
 2<sup>de</sup>  
 altos  
 celli  
 Bas.

rall.  
 tempo.  
 rall.  
 tempo.  
 rall.  
 tempo.  
 Divisi:  
 rall.  
 Divisi:  
 rall.



Handwritten musical score for four staves. The notation includes various notes, rests, and dynamic markings such as *mf* and *poco a poco cres.*. The lyrics "poco a poco cres." are written below the notes on the second and third staves. The fourth staff begins with the marking "I Com." and contains a circled section of the melody.

*Beatrice*

da le de ma rie fut si grand quel les au ront ap pris  
mais elles sa vent peu de cho - se

Handwritten musical score for a piano accompaniment. It features dense chordal textures with many beamed notes. The lyrics "poco a poco cres." are written across the middle of the section. The bottom staff includes the marking *mp* and the phrase "fin poco a poco cres.".





Handwritten musical score for a brass band. The score is written on ten staves, with parts for Flute, Clarinet, Bassoon, and Horns. The notation includes various musical symbols such as notes, rests, and dynamic markings like "cres" (crescendo) and "mf" (mezzo-forte). The score is written in a cursive, handwritten style.

The staves are labeled as follows:

- Flute
- Clarinet
- Bassoon
- Horn I
- Horn II
- Horn III
- Horn IV
- Horn V
- Horn VI
- Horn VII

The score includes various musical notations such as notes, rests, and dynamic markings like "cres" and "mf".

*Beatrice*

et vous qui savez tout vous ne savez ja-mais le mal qu'on m'a fait fai-re

*min.*

*r.*

*allr.*

*fieri.*

*Mus.*



Handwritten musical score for Flute, Oboe, Clarinet 1, Clarinet 2, Clarinet 3, and Bassoon. The score includes various musical notations such as notes, rests, and dynamic markings like *cres*, *ff*, and *mf*. A red circled number 7 is visible in the Oboe part.

Cl. 3 Solo  
Solo  
mf

Handwritten musical score for four voices (1, 2, 3, 4). The score includes various musical notations such as notes, rests, and dynamic markings like *cres molto*, *ff marcato*, *mf*, and *pp*. The word *Largo* is written in large, stylized letters across the middle of the page.

7 *Largo*

Beatrice  
ni ce que j'ai souffert! ...

je veux leur dire à toutes les tourments de l'amour! ...

Handwritten musical score for Flute, Oboe, Clarinet 1, Clarinet 2, Clarinet 3, and Bassoon. The score includes various musical notations such as notes, rests, and dynamic markings like *cres molto*, *ff*, and *mf*. A red circled number 7 is visible in the Bassoon part.

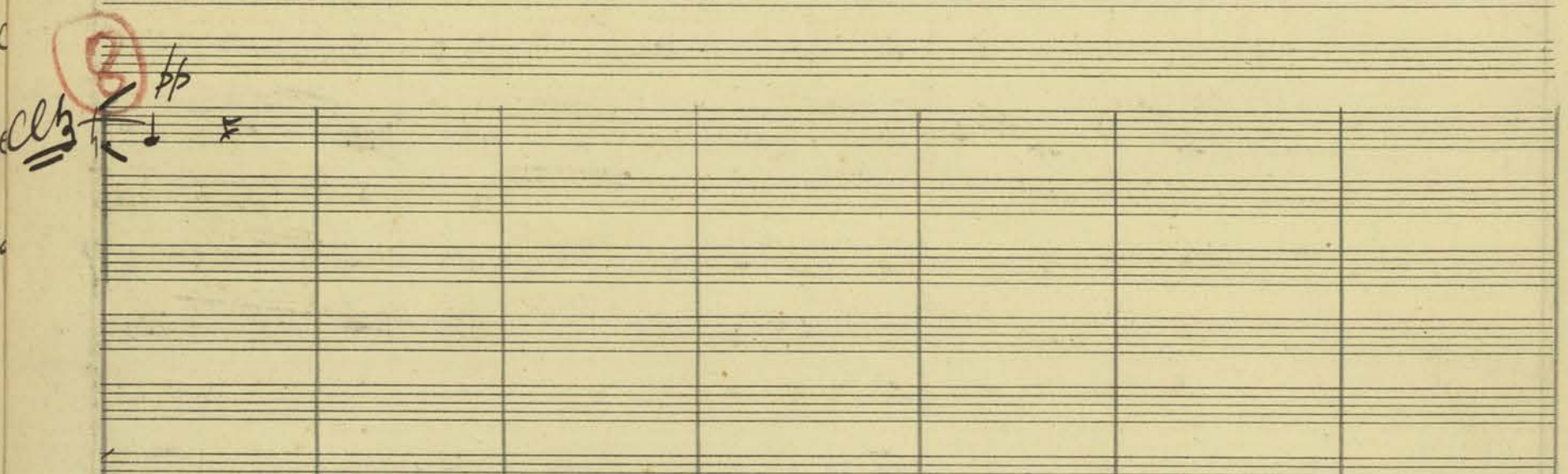


cl. Bass *suivez tonyony*



Mais pourqu'on n'est seule la demeure est deserte comme si mes pechis y avaient fait le

cl. Bass *pp*



Beatrix *vi-de... qui donc a pris ma place en pied des saints autels et qui garde le seuil que mes pas ont son-*

*Sourdines*

*Lento*

1<sup>re</sup> Violon *pp*

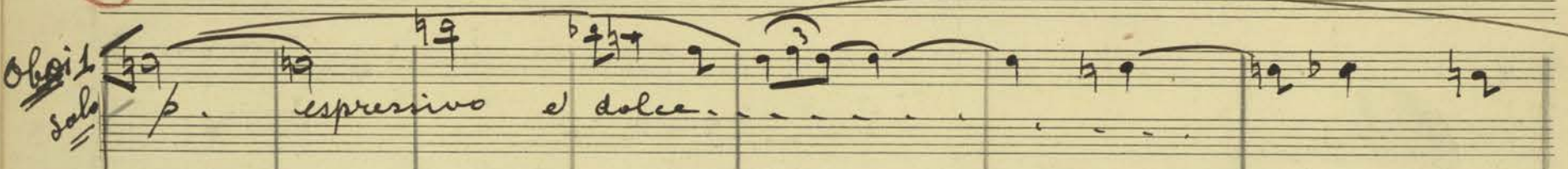
2<sup>e</sup> Violon *pp*

Violoncelle *pp*

Double Bass *pp*



Oboe 1 *Solo* *pp* *espressivo e dolce*



Beatrix *lle? ...*

*La lampe est allumee je vois briller les cierges matines sont son-*



*Otez les sourdines!*





(9)

Oboi.

Beatrie   
mes voi-ci que le jour monte et personne ne parait...

Qu'est-ce-ci ?

Con Sordani

- 1. Violon
- 2. Violon
- Alto
- Celli
- Bassi

*avec sordani*

(9)

Flauti  
a  $\frac{3}{4}$  p

Beatrie   
de-jà mes pauvres mains sont si près de la Mort quelle ne savent plus si elles touchent les choses dans cette vie ou dans.









Flutes 1 2 *mf espressivo dolce*

Oboes 1 2 *p*

Clarinets 1 2 *mf espressivo*

Celli *p*

I Corno *Con Sordini* *p*

Molto calmo

Béatrice

lorsque je marchais dui-te - et que j'étais heu-reux - - - - - se!

Violins 1 2 *ppp*

Violas *ppp*

Celli *ppp*

Bassi *ppp*

Archi *ppp*





Flute 1  
Flute 2  
Oboe 1  
Oboe 2  
Cor Anglais  
Clarinet  
Clarinet B.  
Corno I

*Forcine sempre.*  
*espressivo*

Handwritten musical notation for woodwinds and strings, including triplets and dynamic markings like *pp*.

Béatrice  
1. Violini  
2. Violini  
Alto  
Celli  
Bassi

Et voi ci le grand voi le qui convi-ra ma

Handwritten musical notation for vocal and string parts, including lyrics and dynamic markings like *mf*.



*Solo I*

Oboi 2 *pp* *molto* *pp* *molto cantabile ed espressivo* *rall.* *mf*

Clar. B. *pp* *molto* *pp* *molto cantabile ed espressivo* *rall.* *mf*

Corno I *pp* *molto* *pp* *molto cantabile ed espressivo* *rall.* *mf*

Beatrice *Mort!* *Ma mè-re!* *Ma mè-re!* *pardon-nez-moi, si*

1. Viol. *molto* *pp*

2. Viol. *molto* *pp*

Viola *molto* *pp*

Alto *molto* *pp*

Celli *molto* *pp*

Bassi *molto* *pp*

*Tempo.*

Oboi *rall.* *pp*

Cor Anglais *pp*

Bassons 1. *pp* 2. *pp*

Beatrice *C'est un sa-ri-le-ge* *j'ai froid!* *et je suis mu-e!*

Oboi 2 *rall.* *molto*

Cor. Angl. *rall.* *molto*

Bassons 1. *rall.* *molto* 2. *rall.* *molto*

Beatrice *mes pauvres vête-mens ne ca-chaient plus un* *corps* *qui ne soit plus ou se ca-*





*Sourdines!*

*1<sup>er</sup> Violon* *pp*

*2<sup>e</sup> Violon & Viola* *pp* *sourdines*

*alto* *pp* *sourdines*

*Celli* *pp* *sourdines*

*Pit.* *tutti*

*Otez vite les sourdines*

12

Oboi

Cor anglais

Cor Anglais

Corno I

sans sourdine

Beatrice

Ma mè-re ! n'est ce pas vous ma mè-re qui me gardez ceux-ci - - -

1. Vcl

2. Vcl

Alto

Celli

Bassi

12







[illegible]







Handwritten musical score for a symphony orchestra, featuring staves for various instruments and vocal parts. The score is written in French and includes dynamic markings and performance instructions.

**Instrumental Parts:**

- Flutes (Flûtes):** Staff 1, marked *Flûtes*.
- Oboes (Obes):** Staff 2, marked *Obes*.
- Clarinets (Cler):** Staff 3, marked *Cler*.
- Celli (cl.B.):** Staff 4, marked *cl.B.*.
- Bassoon (Fagotti):** Staff 5, marked *Fagotti*.
- Corn I (Corno I):** Staff 6, marked *Corno I*.
- Corn II (Corno II):** Staff 7, marked *Corno II*.
- Trumpets (Cromhorn):** Staff 8, marked *Cromhorn*.
- Tubas (Tuba):** Staff 9, marked *Tuba*.
- Timpani (Tympani):** Staff 10, marked *Tympani*.
- Drum (Batterie):** Staff 11, marked *Batterie*.
- Harps (Harpe):** Staff 12, marked *Harpe*.
- Violins (Violon):** Staff 13, marked *Violon*.
- Violas (Viola):** Staff 14, marked *Viola*.
- Celli (Cello):** Staff 15, marked *Cello*.
- Bass (Basse):** Staff 16, marked *Basse*.

**Vocal Parts:**

- Beatrice:** Staff 17, marked *Beatrice*.

**Performance Instructions and Dynamics:**

- Dynamic markings:** *ppp* (pianissimo), *pp* (piano), *p* (piano), *f* (forte), *ff* (fortissimo), *fff* (fortississimo).
- Tempo/Character markings:** *molto* (very), *piu* (more), *meno* (less), *meno mosso* (less motion), *piu mosso* (more motion), *meno allargando* (less slowing down), *piu allargando* (more slowing down).
- Performance instructions:** *plus longue* (longer), *moins longue* (shorter), *moins vite* (less fast), *plus vite* (faster), *moins fort* (less strong), *plus fort* (stronger), *moins doux* (less soft), *plus doux* (softer), *moins grave* (less low), *plus grave* (lower), *moins aigu* (less high), *plus aigu* (higher).
- Other markings:** *cloche!* (bell!), *mit salt sich* (with salt), *fab lab dob* (fab lab dob), *plus longue* (longer), *moins longue* (shorter), *moins vite* (less fast), *plus vite* (faster), *moins fort* (less strong), *plus fort* (stronger), *moins doux* (less soft), *plus doux* (softer), *moins grave* (less low), *plus grave* (lower), *moins aigu* (less high), *plus aigu* (higher).

**Handwritten Notes:**

- Harpe* (Harps) written in large blue ink across the middle of the page.
- plus longue* (longer) written in blue ink on the right side.
- moins vite* (less fast) written in blue ink on the right side.
- moins fort* (less strong) written in blue ink on the right side.
- moins doux* (less soft) written in blue ink on the right side.
- moins grave* (less low) written in blue ink on the right side.
- moins aigu* (less high) written in blue ink on the right side.



13

Flutes 1 2

Alto 1 2

Cor Angl.

Cler 1 2

Ces.

Bs.

Dr.

13

Chargo

1 2

Trumpets 1 2

3

4

5

6

7

8

9

10

11

12

13

14

15

16

17

18

19

20

21

22

23

24

25

26

27

28

29

30

31

32

33

34

35

36

37

38

39

40

41

42

43

44

45

46

47

48

49

50

51

52

53

54

55

56

57

58

59

60

61

62

63

64

65

66

67

68

69

70

71

72

73

74

75

76

77

78

79

80

81

82

83

84

85

86

87

88

89

90

91

92

93

94

95

96

97

98

99

100

13

Chargo

1 2

Trumpets 1 2

3

4

5

6

7

8

9

10

11

12

13

14

15

16

17

18

19

20

21

22

23

24

25

26

27

28

29

30

31

32

33

34

35

36

37

38

39

40

41

42

43

44

45

46

47

48

49

50

51

52

53

54

55

56

57

58

59

60

61

62

63

64

65

66

67

68

69

70

71

72

73

74

75

76

77

78

79

80

81

82

83

84

85

86

87

88

89

90

91

92

93

94

95

96

97

98

99

100

Beatrice

me - re!

la por - te sou - verte et mes soeurs vont venir! je ne pourrai je - mais

13

AL

No 29

MUSIQUE D'ORCHESTRE

AGENCE MUSIQUE



*piu mosso*

*creac.*

*trumpets*

*trill.*

*Beatrice*  
Ayez pi-tié de moi:  
Piu mosso

*1*  
*2*  
*alto*  
*cello*  
*bari*

*truce*  
*truce*  
*truce*  
*truce*  
*truce*

*Piu mosso.*

les murailles m'é-crà - - sent



Handwritten musical score for a woodwind ensemble. The score is written on ten staves, grouped into five pairs. The instruments are labeled on the left: Flutes (1 and 2), Oboes (1 and 2), Clarinets (1 and 2), Bassoon (Cl. B.), and Fagotti. The notation includes various musical symbols such as notes, rests, and dynamic markings like 'cresc.' and 'molto'. The score is written in a single system, with measures separated by vertical bar lines. The handwriting is in ink on aged paper.

Handwritten musical score for a symphony orchestra, featuring parts for Corni (Horns), Trombones and Tubas, and Harpe (Harp). The score is written on multiple staves, showing musical notation, dynamics (e.g., *ppp*, *cres. molto*), and performance instructions (e.g., *rec*, *mit solli si*).

Beatrice  *la lumière me suffo- que et ma honte est é-cri-te sur les dalles qui se dres-sent, Ah! —*

Handwritten musical score for three voices (Soprano, Alto, Tenor) and piano accompaniment. The score is written on five staves. The first two staves are for the voices, and the last three are for the piano. The music is in a key with one sharp (F#) and a common time signature. The piano part features complex chords and arpeggios, with some measures marked "cres." and "dim.". The vocal parts have lyrics in German, including "Ich hab' dich lieb" and "Ich hab' dich lieb".

[illegible]



14 Lento

Flutes  $C \sharp \flat$   
 Oboes  $C \sharp \flat$   
 Cor Anglais  $C \sharp$   
 Clarinet  $C \sharp \flat$   
 Bassoon  $C \sharp \flat$

Oboi  $\frac{1}{2}$   $p$   
 Cor Anglais  $p$

Lento (comme au 2<sup>ème</sup> acte).

divin  $pp$

*multo*  $ff$  *multo*  $ff$  *multo*  $ff$  *multo*  $ff$

S. Clémence

L'alleluia

Le Ciel nous l'a donnée  
 le seigneur nous la prie  
 S. - Felicité  
 La couronne est prête, les anges l'attendaient ! .....

$ff$



Handwritten musical score for a woodwind section, featuring parts for Oboe 1, Oboe 2, Clarinet in A, Clarinet in B, and Bassoon. The score is written on five staves with various musical notations including notes, rests, and dynamic markings like "JFF" and "SFF". The tempo is marked "Tempo più Mosso".

Corno II

15  
Pin Vine

Soeur Eglantine  
 L'abbé :  
 vo-yez comme elle est pâ-le, comme elle est de char-  
 Non, Non! Elle n'est pas mor-te elle frus-sonne elle res-  
 pire!  
 plus Mors

[illegible]



Corn. II  
III

Fagotti I

Solo.  
9

ce. I

ce. 13.

II

solo  
I

S. Clémence

S. Félicité

L'alleluie

On dirait que la nuit l'a vieillie de dix ans.

elle doit avoir souffert et lut-té jus qu'a

née

pau. a pau mes

Handwritten musical score for multiple instruments and voices. The score includes staves for Cornets II and III, Fagotti I, Solo (9), and various vocal parts (S. Clémence, S. Félicité). The lyrics are in French, mentioning "On dirait que la nuit l'a vieillie de dix ans." and "elle doit avoir souffert et lut-té jus qu'a". The notation includes notes, rests, and dynamic markings like *pau.* and *mes*.



Handwritten musical score for Oboe I, Clarinet 1 & 2, and Bassoon I. The score includes various musical notations such as notes, rests, and dynamic markings like *cresc.*, *mf*, and *molto*. The Oboe I part starts with a *Solo* marking. The Clarinet parts feature complex rhythmic patterns and trills. The Bassoon part has long, sustained notes with dynamic markings.

*cédez*

Vocal parts for S. Félicie and S. Églantine. S. Félicie's part includes the lyrics "elle était toute seule contre l'armée des anges qui voulaient l'entraîner...". S. Églantine's part includes the lyrics "Oui; de ja hier au soir elle était bien souff".

*cédez*

Handwritten musical score for a large ensemble, including strings and woodwinds. The score features complex rhythmic patterns, trills, and various dynamic markings such as *cresc.*, *f*, and *mf*. The notation is dense, with many notes and rests across multiple staves.





*Solo.*

phi *molto* *espressivo*

cl.

cello *pp*

Cor I

# Allegro Mosso

*S. Eglantine*

frante Elle tremblait elle pleurait, elle qui depuis le jour du miracle des fleurs nourrissait le rou-ti-re du mi-  
dangereux

1. *pp*

2. *pp*

alto

cello



Handwritten musical score for a woodwind section, featuring parts for Flute, Oboe, Cor Anglais, Clarinet, and Bassoon. The score is written on five staves. The key signature is one sharp (F#), and the time signature is 4/4. The score includes various musical notations such as notes, rests, and dynamic markings (pp, mp, mf, f). The piece is titled "Solo" and "Sordini". The page number "37" is written in the top right corner.

Sœur. Balline

5. *Églantine*

ra-cle elle ne voulait pas que je prisse sa place et j'attendais dit-elle le retour... de ma sainte!

mus. voc. sol. alt. tén. b. s. b. s.



Petite Flute

*17a tempo*

Flutes 1 2  
Oboi 1 2  
Cor angl.  
Clarinets 1 2  
Cl. B.

Clarinets en la  
cl. B. in la.

Fagotti

Corni

Trumpettes

Prati *(b.v.)*  
*haquette d'éponge.*

L'abbé

*Mais voi la! la villa! La vierge est revenue!*  
S. Clemence  
S. Feliste.

S. Balbine

*Quel retour qu'elle sainte?*

S. Balbine  
S. Regine

*Allegro*

Violon  
Violon  
Bass

Musical notation for various instruments including Flutes, Oboes, Cor angl., Clarinets, Cl. B., Fagotti, Corni, and Trumpettes. Includes dynamic markings like *ff* and *pp*.

Musical notation for voices and instruments, including the *Allegro* section. Includes dynamic markings like *ff* and *pp*.



*For*  $\frac{2}{1}$

*L'Allegro*  
S. Cleimena  
S. Felicitate  
S. Babbu  
S. Regine

Notre Dame! Notre Mère elle a tenu la couronne ses regards sont elle nous  
est sœur! ses joues! est plus belle! plus douce! rien du ciel!  
Notre Dame! ses yeux sont ses regards  
plus profonds! sont plus  
doux!

Musical notation on staves with lyrics in Greek below:

πρ  
πρ  
πρ  
πρ





Flutes 1 2

Oboes 1 2

C. Aug.

Clarin.

Cl. B.

Fagotti

Cor 1 2 3

Trumpets

Handwritten musical score for woodwinds and brass. Includes dynamic markings like *ff*, *mf*, *pp*, *cresc.*, *dim.*, and *more*. A handwritten instruction "Mettez vite les sourdines" is present near the horns.

Soprano

S. Cleme

S. Felice

S. Babbie

S. Regino

Elle nous revient du ciel !

Elle nous l'a ramenée !

Oui ! oui !

C'est sur les ailes de ses saintes prières !

*Senza trascinare*

*Sœur Eglantine*

*Venez donc ! Venez donc !*

*fermentando*

*plus son*

arco

Handwritten musical score for strings. Includes dynamic markings like *ff*, *mf*, *pp*, *cresc.*, *dim.*, *more*, and *arco*.



Flute  
Oboe  
Cor Anglais  
Clarinet  
Cl. B.  
Fagotto

I *sempre con Sordina*  
*pp espressivo molto*

Corn  
III

*Allegro*

S. Eglantine  
cœur!

*Molto*

S. Clémence

Sœur Béa-tri-ce! Sœur Béa-tri-ce!  
na-ban-dou-ne pas te

*cello*  
*Molto*

*Sordines!*

Musical notation for strings and woodwinds with sordines.





Handwritten musical score for the upper woodwind section. The staves are labeled on the left: Flûte 1, Flûte 2, Oboi, Cor Angl, Clarinet 2, Cl. B., Fagott, and Corno I. The music is written in a key with one sharp (F#) and a common time signature. The Flûte 1 part has a melodic line with a long slur. The Oboi part has a similar melodic line. The Clarinet 2 part has a melodic line with a long slur. The Cl. B. part has a melodic line with a long slur. The Fagott part has a melodic line with a long slur. The Corno I part has a melodic line with a long slur.

S. Clémence

sœurs aujourd'hui grand mira-  
cle!

Sœur Félicité

1<sup>er</sup> Violon

Sœur Eglantine

- x # He

La Vierge te sou-rit et ses le-vres t'appel-lent!

Sourdine

*espressivo*

*molto*

Handwritten musical score for the lower section, likely piano accompaniment. It consists of two staves. The left staff has a melodic line with a long slur. The right staff has a melodic line with a long slur. The music is written in a key with one sharp (F#) and a common time signature. The left staff has a melodic line with a long slur. The right staff has a melodic line with a long slur.



Flute I *mf*

*I solo*

Clari

Clar

Ces

Reg. M.

*S. églantine*

las

elle n'entend pas Elle semble souffrir et sa face se creuse!

Sœur Clemence!

portouyla sur son

*Aviri*





Handwritten musical score for the first system, featuring staves for Flutes, Oboes, Clarinet in A, Violins I & II, Cellos, and Basses. The notation includes various musical symbols such as notes, rests, and triplets.

S. Eglantine *Non! laissez la plus tôt près de celle qui l'aime et l'entoure de Mi-ra-cles!*

Handwritten musical score for the second system, featuring staves for S. Clemence, Violins I & II, Cellos, and Basses. The notation includes various musical symbols such as notes, rests, and triplets. The word "molto" is written at the end of the system.



19 tempo

Flûtes *trall* *p*

Oboes *trall* *tempo* *- a 2*

Clarinets *trall*

Clarinets 2 *trall*

Clarinets 3 *trall*

Fagotti I *trall*

Fagotti II *trall*

I Corno Lordini

Harpe

Violoncello

S. Clemence

Elle respire a vec pei-ne Entrouvrousson man-

1. *trall* *ppp*

2. *trall* *ppp*

altos *trall* *ppp*

cellos *trall* *ppp*

4. *trall* *ppp*





*Flûte*

*Oboe*

*Clarinettes en la*

*Clarinete basse*

*Corno I*

*Harpe*

*S. Felicité*

*S. Clémence*

*Ma mè-re avez vous vu ses haillons qui ruinent ?*

*Sœur Clémence*

*Elle est toute blanche de la neige qui*

*alto*

*cello*

*Bassi*



Handwritten musical score for Flutes, Oboe, Clarinet, Bassoon, and Harp. The score includes various musical notations such as notes, rests, and dynamic markings like *pp* and *molto*. The word *Sum* is written above several measures.

Vocal parts for Sœur Thérèse and Sœur Félicité. The lyrics are in French:

*Sœur Thérèse*  
S. Clémentine  
fond!  
ses cheveux ont blanchi rous que nous le sachions!

*Sœur Félicité*  
ses pieds nus sont couverts de l'argile de rou-tes!

Below the lyrics, there are musical staves with notes and the word *pau* written multiple times.





Handwritten musical score for three staves: *clavier*, *Cl. B.*, and *Harpe*. The *clavier* and *Cl. B.* staves have rests. The *Harpe* staff has a melodic line starting in the second measure, marked *pp* and *fz*, with a slur over the first four notes.

L'allure

Handwritten musical score for voice and piano. The vocal line is written on a single staff with lyrics: "Mes filles faisons nous nous vivons près du ciel! et les mains qui la touchent resteront lumineuses!". The piano accompaniment consists of three staves. The first two staves have a melodic line marked *pp* and *fz*. The third staff has a bass line with triplets marked *pp*. The bottom section of the page shows a multi-measure rest for 4 measures, followed by a melodic line marked *pp* and *fz*.



cl<sup>13</sup>  
fp

3. Corni  
Sourdines

Sœur Eglantine:

1. sa poitrine se roula ve dres yeux vont ouvrir!

2. - - - - -

alt. - - - - -

1. *pp* *dim*

cell. 2. *pp* *dim*

3. *pp* *dim*

harni *pp*

recit.

2 mesure

Beatrice:

Quand mes en-fants mou-

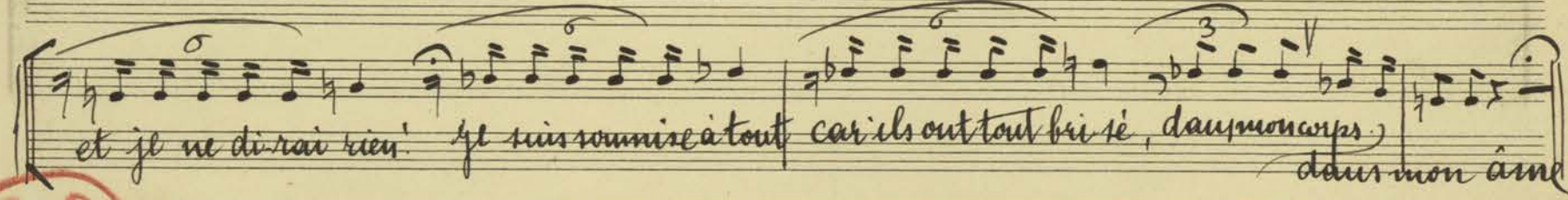
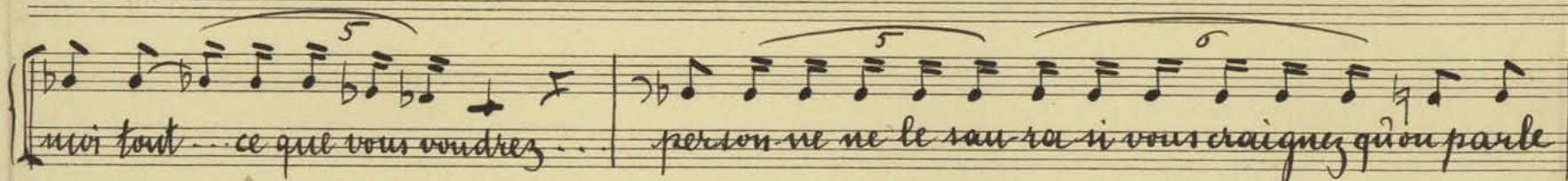
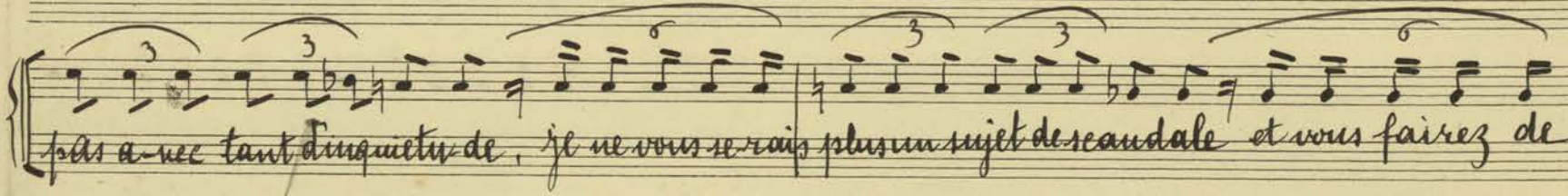
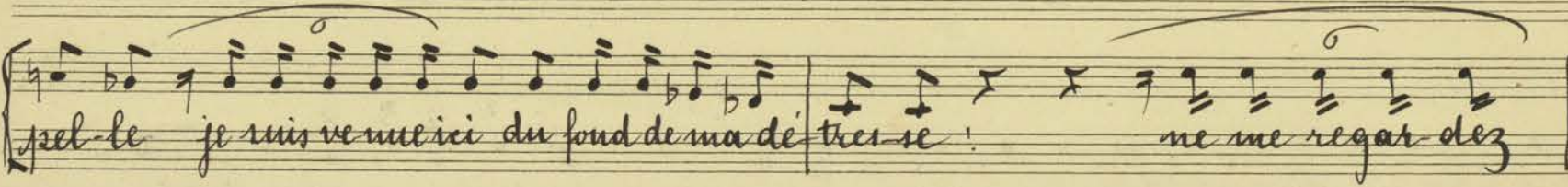
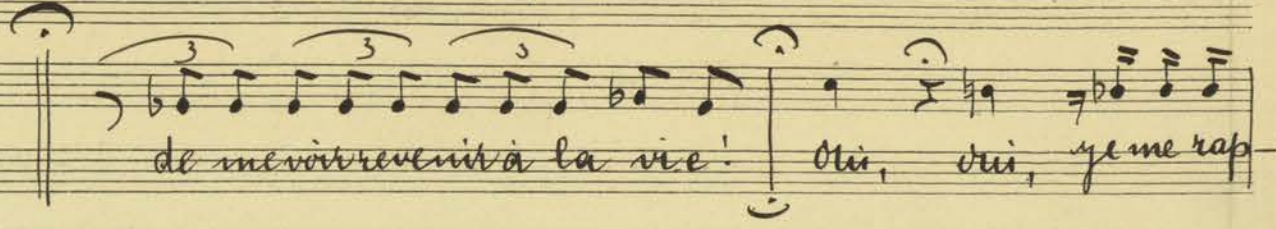
ru rent, pourquoi pouriez vous? ils moururent de

[illegible]

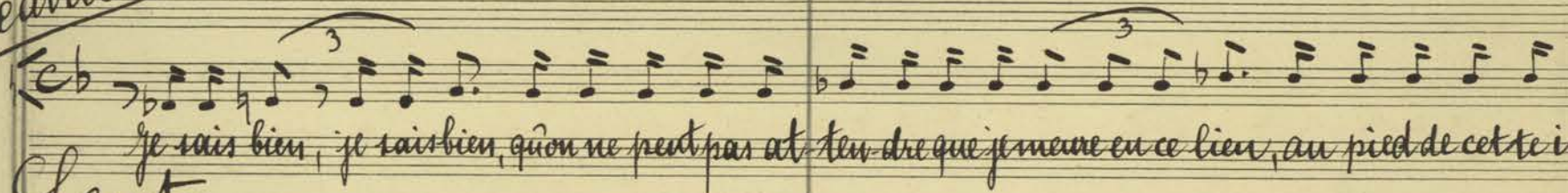


# Recit. (libre)

Beatrice:



Beatrice



Lento

1. *pp* *slowdines* !

2. *pp* *slowdines* ! *molto espressivo*

alt. soli *pp* *slowdines* ! *molto espressivo*

1. *pp* *slowdines* !

Celli 2 *pp* *slowdines* !

3. *pp* *slowdines* !

Barri. *pp* *slowdines* !

(20) (8<sup>va</sup>. alta)

8<sup>va</sup> alta

*poco a poco cres.*

*poco a poco cres.*

*poco a poco cres.*



Beatrice

ma-ge, si près de la chapelle, de tout ce qui est pur de tout ce qui est saint . . . . .

Handwritten musical score for the first system. It includes a vocal line with lyrics and five piano accompaniment staves. The piano parts are marked with 'cresc.' and 'molto'.

*cresc. . . . .* *cresc. . . . . molto*

*cresc. . . . .* *cresc. . . . . molto*

*cresc. . . . .* *cresc. . . . . molto*

*cresc. . . . .* *cresc. . . . . molto*

*cresc. . . . .* *cresc. . . . . molto*

*cresc. . . . .* *cresc. . . . . molto*

Béatrice

et vous êtes très bonnes d'avoir pris patience et de ne m'avoir pas repoussé tout de suite . . . . .

Handwritten musical score for the second system. It includes a vocal line with lyrics and five piano accompaniment staves. The piano parts are marked with 'pp' and 'subito pp'.

*pp* *subito pp*

*pp* *subito pp*

*pp* *subito pp*

*pp* *subito pp*

*pp* *subito pp*

alto  
soprano  
cello  
bass



Beatrice

[illegible]



(21) *pp*

*Fagotti I*  
*3 Corni con sordini*

*pp*  
*pp*  
*pp*  
*pp*

*poco*  
*poco*  
*poco*

*pp*  
*pp*  
*pp*

*Beatrice*

*mais! je ne souffre plus! pourquoi m'avoir couchée sur ce beau linge blanc? Hélas! le linge blanc n'est plus qu'un rêve -*

*ci ci ci ci ci*

*Fagotti I*  
*Cornu*

*pp*  
*pp*  
*pp*  
*pp*

*meno poco*  
*meno poco*  
*meno poco*

*meno*  
*meno*  
*meno*

*molto*  
*molto*  
*molto*

*Beatrice*

*proche et la paille souillée est tout ce qui convient au péché qui me tombe...*

*C.B.*

*C.B.*





Adagio

Mais vous me regardez et ne m'écoutez rien. Vous n'avez pas l'air irrité — je vois des larmes dans vos

*Tempo Lento*

Toujours Serendine

Handwritten musical score for a 12-part ensemble. The score is written on 12 staves, each with a unique clef and key signature. The parts are labeled on the left side of the staves:

- 1. *Tempo Lento* (Piano)
- 2. *sur le piano* (Piano)
- 3. *sur le chevalet* (Piano)
- 4. *sur le chevalet* (Piano)
- 5. *sur le chevalet* (Piano)
- 6. *sur le chevalet* (Piano)
- 7. *sur le chevalet* (Piano)
- 8. *sur le chevalet* (Piano)
- 9. *sur le chevalet* (Piano)
- 10. *sur le chevalet* (Piano)
- 11. *sur le chevalet* (Piano)
- 12. *sur le chevalet* (Piano)

The score includes various dynamic markings such as *ppp* (pianissimo) and *pp* (piano). The tempo is marked *Lento*. The score is written in a cursive, handwritten style on aged paper.








Handwritten musical score for a symphony orchestra. The score is written on multiple staves, with parts for Flute, Oboe, Clarinet, Bassoon, and Fagotti. The notation includes notes, rests, and dynamic markings such as *f* (forte) and *pp* (pianissimo). The score is organized into measures, with some measures containing multiple notes or rests. The handwriting is in ink on aged paper.

Handwritten musical score for Corno I and Harpe. The score is written on two systems of staves. The first system is for Corno I, and the second system is for Harpe. The Corno I part includes a melodic line with a fermata and a dynamic marking of *mf*. The Harpe part includes a complex, arpeggiated figure with a dynamic marking of *F* and a tempo marking of *Tempo*.

Beatrice:   
ne baisy pas ses mains qui ont fait tant de mal!

L'alleine  
sain ————— te!

S. Clémence = > 1 1 1 1 1  
Remps <sup>vous êtes l'amée-</sup>

*surveys*

Handwritten musical score for "The Rose Tree" (Die Rose, die Rose). The score is written on aged paper and includes vocal parts for Soprano (1), Alto (2), and Alto, as well as instrumental parts for Cellos (Celli) and Basses (Bassi). The vocal parts have lyrics in German. The instrumental parts are for cellos and basses, with dynamic markings like "f" and "p". The score includes a "Finis" section and a "Finale" section. The vocal parts have lyrics in German. The instrumental parts are for cellos and basses, with dynamic markings like "f" and "p".



Handwritten musical score for a symphony orchestra. The score is written on ten staves, with the following instruments labeled on the left:


- Flutes
- Oboes
- Clar. 1
- Clar. 2
- Cel. M.
- Fagotti
- Corn. I

The score is divided into two systems. The first system contains measures 1 through 4. The second system contains measures 5 through 8. The notation includes various musical symbols such as notes, rests, and dynamic markings like *f* and *p*. There are also some handwritten annotations and corrections, such as "b" and "f" markings, and a "cut!" marking at the end of the second system.

2  
Swiss

Harpe

S. Eglantine.

Beatrice: 

Clémence  
- lue - 2 2 2 2 2 7 7 -  
qui nous revient du ciel ! . . . .

Handwritten musical score for "The Rose Tree" in G major. The score is written on three staves. The first staff is labeled "1." and the second staff is labeled "2.". The third staff is labeled "alto". The music is written in G major, indicated by one sharp (F#). The time signature is 4/4. The score includes various musical notations such as notes, rests, and bar lines. The first staff (1.) has a treble clef and a key signature of one sharp. The second staff (2.) has a treble clef and a key signature of one sharp. The third staff (alto) has a treble clef and a key signature of one sharp. The music is written in a simple, folk-like style. The first staff (1.) has a treble clef and a key signature of one sharp. The second staff (2.) has a treble clef and a key signature of one sharp. The third staff (alto) has a treble clef and a key signature of one sharp. The music is written in a simple, folk-like style.

~~Quiver!~~

celli

Handwritten musical notation for cello on a five-line staff. The notation includes a treble clef, a key signature of one flat (B-flat), and a single note on the first line (F4). The note is beamed to the next staff.



Tempo

Flauto  
Oboi  
Clarin  
Clarin  
Fagotti

Tempo

Corno I  
*mf esp*

Tempo

Harpe

S. Eglantine:

Mais baisons ce front pur couronné des mi- ra- cles !

Tempo

1  
2  
altos  
cello  
basso



Cor anglais

Clarinet 1  
Clarinet 2

Cl. B.

*suivez!*

Beatrice:

Mais que voulez-vous faire! et qu'est-il arrivé?  
On ne pardonnait pas,

*suivez!*

C. Aug.  
Clarinet 1  
Clarinet 2  
Cl. B.

Béatrice

lors-que je suis heu-reu-se, Ne touchez pas ce front qu'il habitait la luxu-re... Oh! qui donc é-tes

*sf piz.*







Flutes

oboi 1 2

C. Angl.

Clarinet 1 2

Cl B.

I Tregott.

pp

poco cresc.

cresc.

Beatrice

vous que j'ai dit il y a vingt cinq ans que j'étais malheureux - se!

1. Eglantine

il y a vingt cinq ans que Dieu vous a choisie entre





Handwritten musical score for a symphony, featuring various instruments and vocal parts. The score is written on multiple staves, with some parts marked "rall" (rallentando) and others "Sourdine" (muted). The instruments listed include Oboi, Cor. Angl., Clarin., Cl. B., Fagotti, Corni, Harpe, S. Eglantine, and various string sections (Violon, Violoncello, Alto, Cello, Bass). The score includes dynamic markings such as *mf*, *ff*, *sf*, and *poco*. The vocal parts are marked with lyrics in French, including "vous ne di-tes ce-la sans la moindre amer-". The score is written in a cursive, handwritten style, typical of a composer's manuscript.



1 Fagotti 2 *un molto*

2 Corni 3 *un molto*

4 Beatrice *un molto*

thème... je ne comprends pas bien ce qu'il m'arrive, je suis faible et ma-la-de je ne me rends pas

Beatrice

compte et tous les mots m'étonnent je ne m'attendais pas mais je crois que vous vous trompez.

Beatrice

je suis... faites un signe de croix et voyez vous la fa- ce je suis sœur Be-a

Vivo

27 *Vivo*  
*Allegro*

clarinettes I II *FF molto* *molto marcato*

1 *FF molto* (Cuiuri)

2 *FF* (Cuiuri)

3 *FF* (Cuiuri)

4 *FF* (Cuiuri)

*Allegro*

ce!

Corn  
Sourdine





Fluets  
Obor  
Clar.  
Cl. B.  
Fagotti  
I Corno

Jardini sempre.  
I Corno

Harpe

L'abbé *poco meno*  
Mais oui! Mais oui! nous le sa- vous vous é-tes saeur Bé-a-tri-ce vous é-tes no-tre

Viol.  
2. Viol.  
alto  
swin  
Celli  
Bass



Handwritten musical score for a woodwind section, featuring parts for Flute I, Oboe I, Clarinet I and II, Bassoon, and Fagotti. The score is written on five staves with various musical notations including notes, rests, and dynamic markings like "poco." and "cresc."

Sordine  
Corno I

poco a poco cresc. - - - - - cresc.

Harpe

The image shows a handwritten musical score on aged paper. The top staff is labeled "Sordine Corno I". It contains a melodic line with notes and rests, and dynamic markings "poco a poco cresc." followed by a long dash and another "cresc.". The bottom staff is labeled "Harpe". It features a complex, arpeggiated texture with many sixteenth or thirty-second notes, grouped in beams. Large, sweeping curved lines connect the two staves across the measures, indicating a close relationship between the parts. The handwriting is fluid and characteristic of early 20th-century manuscript notation.

*L'Aller*  
sœur, la plus pure d'entre nous l'agneau miraculeux la flamme immaculée, la filleule des-

Handwritten musical score for a 12-part choir, divided into Soprano, Alto, and Bass sections. The score includes vocal staves with notes and rests, and piano accompaniment at the bottom. The word "Crescendo" is written across the top, and "Crescendo" is written across the middle. The bottom section is labeled "Cello" and "Bass".



66

(28)

F Flute 1  
F Flute 2  
O Oboe 1  
O Oboe 2  
C Clarinet 1  
C Clarinet 2  
E E♭ Clarinet 3  
F Bassoon 1  
F Bassoon 2  
I Horn 1  
I Horn 2  
H Harp  
V Violin 1  
V Violin 2  
V Viola  
V Violoncello  
B Bass  
T Tenor  
S Soprano

sol. { La# rib  
do# reb  
mit fab }

glissando

Memo Masso

Béatrice

ah! C'est bien vous ma mère? Je ne vous avais pas recon-

-an - - - ges.

(28)



C. Aug. *Solo*  
*pp*

*for aus*

Beatrice

me! Vous êtes toute droite et vous voilà pen- chée... je t'ai penchée aussi, et me voi- là tou-

1. *pp*

2. *pp*

altos *pp*

cells *pp*

Bassi *pp*

*Gravement*  
*4*

C. Aug. *pp*

Clarinet *Solo*  
*pp*

*Sento*

Beatrice

de je vous reconnais toutes, et voi- là sœur Clemence et sœur Felici- té!

1. *mi*

2. *pp*

altos *pp*

cells *pp*

Bassi *pp*

*Sento*





Handwritten musical score for woodwinds and strings. The score includes parts for Flutes (Flûtes), Oboes (Hautbois), Cor Anglais (Cor Anglais), Clarinets (Clarinets), Bassoon (Fagot), and Horns (Corne). The music is written in G major and 4/4 time. Key markings include *Sf poco.*, *Solo.*, *espress...*, *espress... molto*, and *Sf poco.*. The Horns part is marked *Sourdines* and *Sf poco.*. The score is divided into measures by vertical bar lines.

*Lento*

Sœur Felicité

Beatrice

*vous n'a-vez pas souffert vous ne semblez pas*

*Où sœur Fe-li-ci-té qui sor-tit la pre-mière de la cha-pelle en fleurs!*

Handwritten musical score for voices and strings. The score includes parts for Soprano (Soprano), Alto (Alto), and Bass (Bass). The music is written in G major and 4/4 time. Key markings include *4. pers.*, *sur le chevalet!*, *espress...*, and *espress.*. The score is divided into measures by vertical bar lines.



Flûtes

Oboi

C. Angl.

Clarin

Cl. B.

Fagotti

Corn

Trombon

Tuba

Beatrice

Tristez, je-tai la moins âgée et je suis la plus vieille

L'Abbesse

C'est que l'amour di-vin est un far-

2. 1<sup>er</sup> Pupitres sur le chevalet.

2. 2<sup>es</sup> Pupitres sur le chevalet.



*Flutes*  
1  
2

*Oboi*

*Cor ang.*

*Clar.*

*Cl. B.*

*Fagott.* Solo

*Petite flûte*

*harp.*

*Corn.*

*Violoncelles e tuba* *sf poco* *ppp*

*Harpe.*

*Cymbales*

*L'Alme Beatrice*  
Non, c'est l'amour de l'homme qui est le grand fardeau pour me pardon-  
deau terrible

*1<sup>re</sup> Violon* *2<sup>e</sup> Violon* *Violoncelles* *Contrebasse*

*alto*

*sur le chevalet*

*Tempo I*

*Solo.*

*bag. d'éponge.*  
*marcato poco.*

*1<sup>re</sup> Violon* *2<sup>e</sup> Violon* *Violoncelles* *Contrebasse*

*alto*

*sur le chevalet*



Petite flûte  
Flûte 1  
oboi  
Cor. Aug.  
Clarm.

Cymbales  
Harpe

Beatrice  
L'Abbesse

nez vous au-ri ?  
Ma fil-le, si quel qu'un a be-soin de par-don, c'est celle qui peut en fin se je-ter à voi

1  
2  
3  
4

allu





Petite Flute  
2. Fl.  
Oboi.  
C. Angl.

Clarin.

Cymbale

Harpe

L'Altesse Beatrice

pieds ..... mais vous ne savez pas ce que j'ai fait?

L'Altesse

vous n'a-vez fait que des mi-ra-cles et vous a-

The bottom half of the page contains a handwritten musical score. It begins with a vocal line for 'L'Altesse Beatrice' with the lyrics 'pieds ..... mais vous ne savez pas ce que j'ai fait?'. This is followed by a vocal line for 'L'Altesse' with the lyrics 'vous n'a-vez fait que des mi-ra-cles et vous a-'. Below the vocal lines is a piano accompaniment consisting of several staves with chords and melodic lines. The notation is in a 19th-century style, with various accidentals and dynamic markings. The page is numbered '79' in the top left corner.



*Petite Flute*  
*Flutes*  
*Oboi.*  
*Cor. Angl.*  
*Clarin.*

*Cymbales*  
*Harpe*

*2<sup>e</sup> Altess*

vez e-te de-puis le jour des fleurs, la lu-mie-re de nos a-mes... l'en-cens de nos pri-

*1<sup>re</sup> Violon*  
*2<sup>e</sup>*  
*alto*  
*cello*  
*Bassi*





Relite  
Flute

2 2. g. Flute

oboe

C. C. Angell

Clarinet.

2 cl. B.

Harpe

L'Allesse

- è - res

la porte des pro-di-ger la source de la grâ - - - - ce

1.

2.

alt

С. 111

Re...

Cell:

base:



30 tempo

Flute 1  
Flute 2  
Oboe  
C. Aug.  
Clarinet 1  
Clarinet 2  
Fagotti I

Handwritten musical notation for woodwinds and strings, including dynamics like *pp* and *poco*.

Mosso  
Tempo  
poco fin

Trumpets 1 & 2  
Handwritten musical notation for trumpets, including dynamics like *pp*.

Beatrice

Handwritten musical notation for the vocal line of Beatrice.

Je suis partie un soir - il y a vingt-cinq ans a vec le prince Belli-dor -

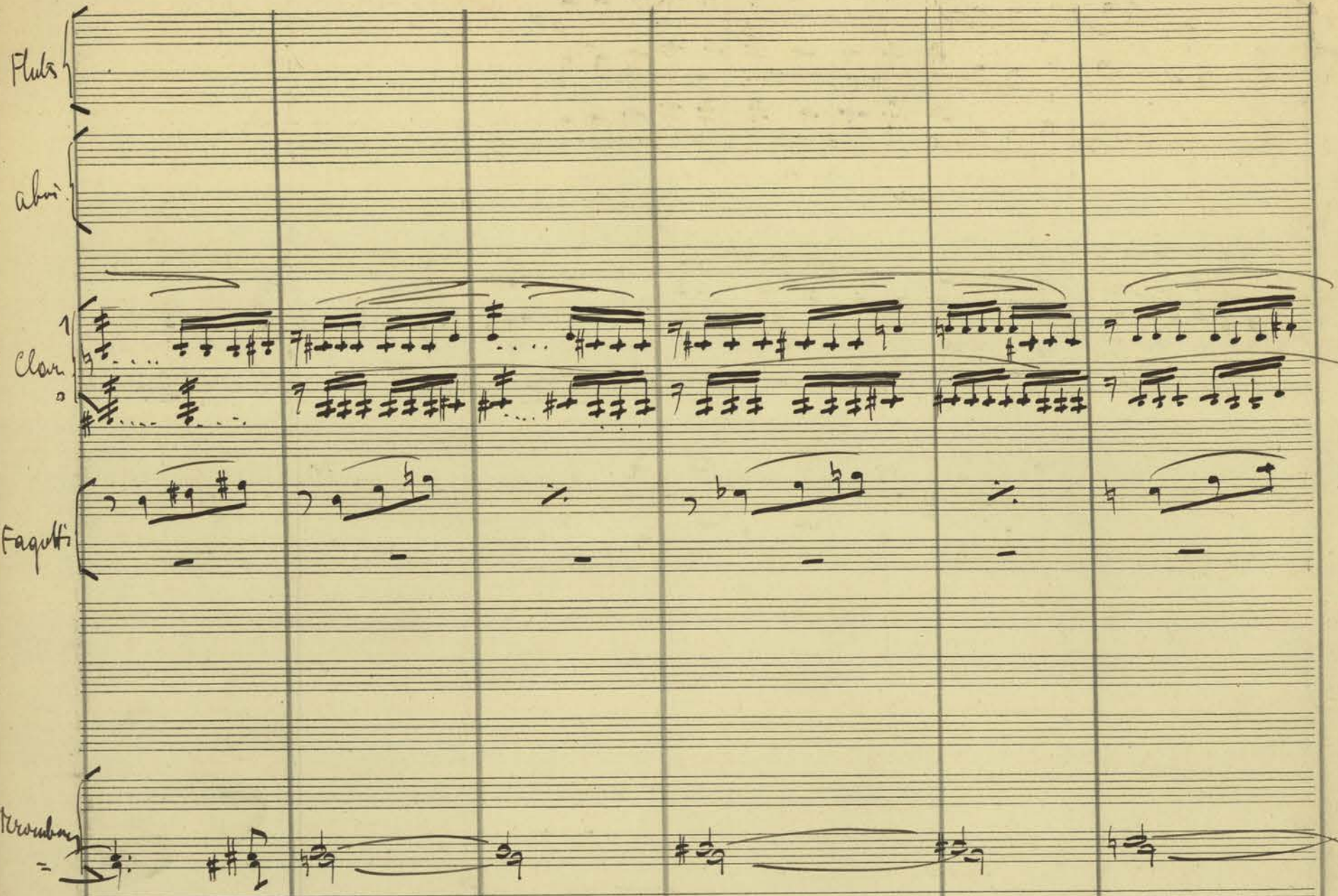
2. Violins  
1. Violins  
Handwritten musical notation for violins, with red annotations: *la meta*, *otez les sourdines*, *col primi*.

L'abbesse  
de qui nous parlez

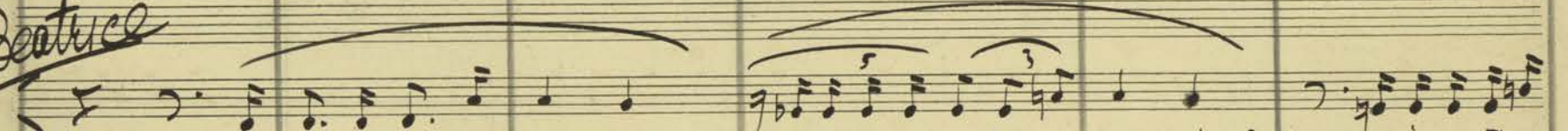
1. V. m.  
2. V. m.  
Alto  
Violoncelles  
Handwritten musical notation for the lower strings, including dynamics like *pp* and *poco*.



Flute  
oboi.  
Clar.  
Fagotti  
Tromboni



Beatrice

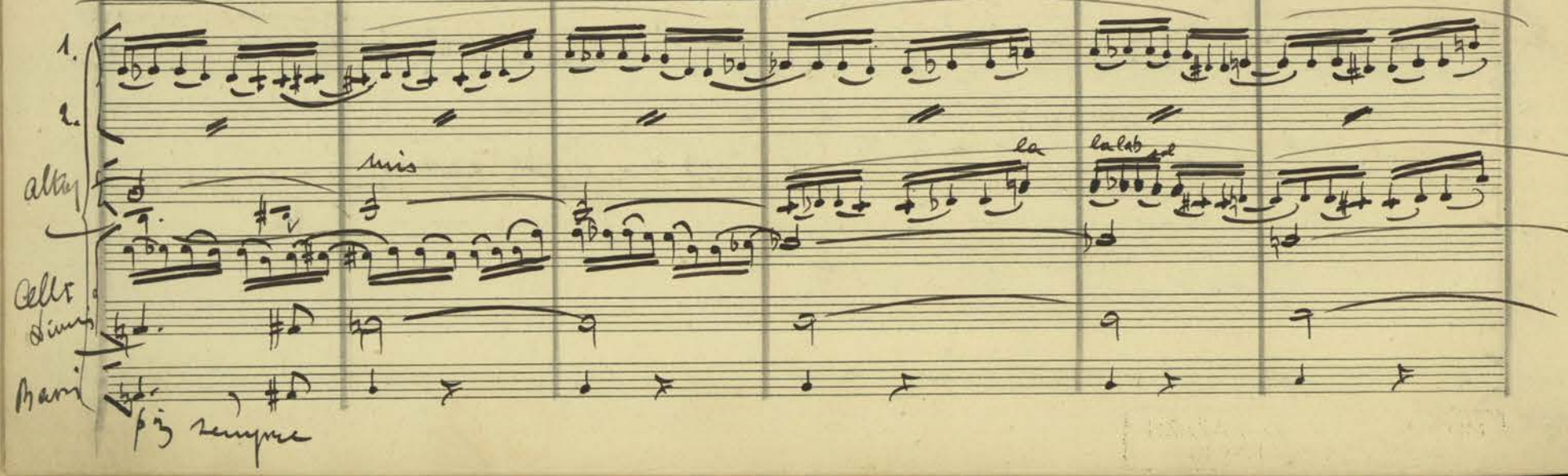


Se-moi, de moi, vous dis-je ! Vous ne voulez pas me compren-dre ? Je suis partie

L'Altesse

vous, ma fil-le ?

1.  
2.  
alto  
Cello  
Basso  
Mandi





Handwritten musical score for "L'Espresso" by Maurice Strakosky. The score is written on five systems of staves. The first system is for Flutes (1 and 2), the second for Oboes (1 and 2), the third for Clarinets (1 and 2), the fourth for Bassoons (1 and 2), and the fifth for Trombones (1 and 2). The music is in 2/4 time and features various dynamics (f, mf, p, pp) and articulations (accents, slurs). The title "L'Espresso" is written in a stylized font at the top right. The composer's name "Maurice Strakosky" is written at the bottom right. The score is marked with "L'Espresso" and "Maurice Strakosky".

Beatrice  
soir il y a vingt cinq ans, puis au bout de trois mois il ne m'a plus aimée... j'ai perdu la pu-

Handwritten musical score for "The Rose Tree". The score is written on five staves. The first staff is the vocal melody, marked with a treble clef and a key signature of one sharp (F#). It begins with a treble clef and a key signature of one sharp (F#). The melody is written in a simple, folk-like style, with notes and rests. The second staff is the piano accompaniment, marked with a bass clef and a key signature of one sharp (F#). It begins with a bass clef and a key signature of one sharp (F#). The accompaniment is written in a simple, folk-like style, with notes and rests. The third staff is the piano accompaniment, marked with a bass clef and a key signature of one sharp (F#). It begins with a bass clef and a key signature of one sharp (F#). The accompaniment is written in a simple, folk-like style, with notes and rests. The fourth staff is the piano accompaniment, marked with a bass clef and a key signature of one sharp (F#). It begins with a bass clef and a key signature of one sharp (F#). The accompaniment is written in a simple, folk-like style, with notes and rests. The fifth staff is the piano accompaniment, marked with a bass clef and a key signature of one sharp (F#). It begins with a bass clef and a key signature of one sharp (F#). The accompaniment is written in a simple, folk-like style, with notes and rests. The score includes various musical notations such as notes, rests, and dynamic markings like *mezzo*, *forte*, *tempo*, and *rit.*. The title "The Rose Tree" is written at the top of the page.



Flûtes  
oboi  
C. angl.  
Clarin.  
Cl. b.  
Fagotti  
Trombones

# Beatrice

deux : j'ai per-du la rai-son, j'ai per-du l'es-pe-rance — ce tous les hommes ont



Flute

cho

C. Angel

clar.

cl. B.

Tengetti

Handwritten musical notation on a grand staff, featuring various notes and rests.

Beatrice

tour on profané ce corps infidèle à son Dieu je suis tombée si bas que les anges du ciel malgré leurs grandes

1

2.

alt.

cel.

arco





Handwritten musical score for a full orchestra. The staves are labeled on the left: Flute, Oboi, Cor. Ang., Clarinet, Cl. B., Fagotti, Corni (1-4), Trombones (1-3), and tuba. The score includes various musical notations such as notes, rests, and dynamic markings. Handwritten annotations include "cresc.", "allarg.", and "dim." across several staves.

Beatrice

ai-les n'auraient put re-mon-ter ..... j'ai commis tant de cri-mes que j'ai souillé par fois jusqu'au péché lui-

Handwritten musical score for the vocal part of Beatrice. It includes a vocal line with lyrics and piano accompaniment. The score features dynamic markings such as "cresc.", "allarg.", and "dim.".



**Largo**

**Fluts**

**aboi**

**E. Aug.**

**Clarin.**

**Cl. B.**

**Fagott**

**Corn**

**Kromb.**

**Tuba**

**Beatrice**

**Largo**

**me-me!**

**Solo.**

**suivez**

**suivez**

**meno f**

**suivez**

**L'abbaye**

Ne parlez plus ma fille c'est l'ombre qui vous tente c'est la douleur qui monte et vous fait de-li-



Tempo

Handwritten musical score for woodwinds and strings. The score includes parts for Flute, Oboe, Clarinet, Bassoon, and Horns. The notation is in 2/4 time and features various musical notations including notes, rests, and dynamic markings like *pp.* and *sf.*. The word *Tempo* is written at the top right.

Solfesse

Sœur Eglantine:

S. Clémence

Sœur. Félicite:

d'air cé-les-te oac

Beatrice

Mais

Le mi-ra-cle d'é-puis-se!

la gra-cie la ter-ra-se!

*more*

*more*

1<sup>re</sup> Violon

2<sup>e</sup> Violon  
Violon

alto

Tempo (vivo)

Handwritten musical score for strings. The score includes parts for Violins, Viola, and Cello/Double Bass. The notation is in 2/4 time and features various musical notations including notes, rests, and dynamic markings like *pp.* and *sf.*. The word *Tempo* is written at the top right of this section.



Flute

Oboe

C. Aug.

Clar.

Cl. B.

Fagotti

### Beatrice

non mais non vous dis-je ce n'est pas le de-li-é c'est ce qui est ré-él ; ce n'est pas l'air ce



Flûtes

oboi

Cl. Aug.

Clarin.

Cl. B.

Beatrice

les-te main est l'air de la ter-re est c'est la ve-ri-té! . . . . . ah! vous è-tes trop

1.

2.

alla

Celli

Bassi



Handwritten musical score for the first system, measures 84-86. The staves are labeled on the left: Flute, Oboe, C. Aug., Clarinet, E. B., and Bassoon. The notation includes various notes, rests, and dynamic markings such as *pp* and *cres.*. The key signature has one flat (B-flat).

Beatrice

don-ces et trop i-nebran-la-bles et vous ne sa-vez rien      j'ai me mieux qu'on m'on-

Handwritten musical score for the second system, measures 87-90. This system includes piano accompaniment for the vocal line. The piano part features complex chordal textures with many accidentals (sharps and flats) and dynamic markings including *f*, *pp*, and *cres.*. The vocal line continues with the lyrics from the previous system.





Handwritten musical score for woodwinds and strings. The staves are labeled: Flute, Oboe, E. Angl., Clar. 1, Clar. 2, Cl. B., and Fagotti. The music is in a key with one sharp (F#) and a common time signature. The score includes various musical notations such as notes, rests, and dynamic markings like *mes.* and *pp*. There is a section marked "Solo" for the Fagotti part.

# Béatrice

trage j'ai mieux qu'on ne ca-ble et qu'on ap-pre-ne en-fin!

# Or Orle viol

Handwritten musical score for woodwinds and strings. The staves are labeled: Flute, Oboe, E. Angl., Clar. 1, Clar. 2, Cl. B., and Fagotti. The music is in a key with one sharp (F#) and a common time signature. The score includes various musical notations such as notes, rests, and dynamic markings like *mes.* and *pp*. There is a section marked "Solo" for the Fagotti part.



C. Augli

cl.

Cl-B.

Fagotti

rall.

more

rall.

rall.

Beatrice

Oui! vous vi-vez i-ci vous di-tes vos pri-è-res vous faites pe-ni-tens ce vous voyez expi-

rall

rall - - -





*Tempo*

Cl. Angl. *pp*

cc. *Tempo*

Cl. B. *pp*

Fag. *pp*

*Tempo*

Beatrice

er . . . . . Mais c'est moi voyez vous

moi et tou-tes mes soeurs qui demes-urent au de-

*Tempo*



C. Aug  
Cl.  
Cl-B  
Fagott

*Debut*  
L'abbé  
hors et n'ont point de re- pos, qui al-lons jus-qu'au bout des grandes peni-ten-ces

*sans sourdines*  
1<sup>er</sup> pupitre (2. soli)  
2. pupitre (2. soli)  
2. violons  
*sourdines*



Handwritten musical score for the first system, measures 1-4. The instruments listed on the left are Flute 1 & 2, Oboe, Clarinet in C, Clarinet in E-flat, Bassoon, and Fagotto. The notation includes various notes, rests, and dynamic markings such as *pp* and *si*. The word *rall* is written above the staff in measures 3 and 4.

*rall.*

S. Eglantine:

L'attenu

*C'est le de-mon qui in-ri-te le tri-omphe des*

*-ous pri-ous mes saeurs c'est la der-nièrè-pren-ne*

Handwritten musical score for the second system, measures 5-8. The instruments listed on the left are 2. Solo, 1. V., 2. Solo, 2. V. S., Alto, Cello, and Bass. The notation includes various notes, rests, and dynamic markings such as *pp* and *si*. The word *rall* is written above the staff in measures 7 and 8.



36

C. Augl  
Cl.  
Cl. B.  
Fagott

Tempo

Trombe  
Eclair

Beatrice

Tempo

1. Viol  
2. Viol  
alto  
cello  
basso

Oui! Oui C'est le de-mon C'est le de-mon qui re-gne!  
vo-yez vous ces mains

*ôtez les sourdines*



cl.  
cl. 3  
Fagotti I

Handwritten musical score for woodwinds and strings. The top system includes staves for Clarinet (cl.), Clarinet 3 (cl. 3), and Fagotti I. The bottom system shows string staves. The music is written in a key with one sharp (F#) and a common time signature (C). The woodwind parts feature complex rhythmic patterns and melodic lines, while the strings provide a harmonic foundation with sustained notes and moving lines.

Beatrice

Handwritten musical score for voice and piano. The top system features a vocal line for Beatrice with lyrics in French. The bottom system includes piano accompaniment with multiple staves. The lyrics are: "la! Elles n'ont plus for-mes-moins... ne el-les ne per-vent plus ion-vir!" The music is written in a key with one sharp (F#) and a common time signature (C). The vocal line is melodic and expressive, while the piano accompaniment provides a rich harmonic texture.



Handwritten musical score for a string quartet, featuring parts for Violin I, Violin II, Viola, Cello, and Double Bass. The score is written on five staves with various musical notations including notes, rests, and dynamic markings like 'p' and 'mf'.

Beatrice

Handwritten musical score for a vocal and piano piece. The lyrics are: "Il a fallu les vendre à prix d'âme et de corps... On les achète aussi quand il ne reste". The score includes a vocal line with lyrics and a piano accompaniment with various markings like "arco" and "pizz.".



37 tempo

tempo

clarin

Fagott

trouba  
1  
2  
3  
4

Beatrice

L'abbess

Que les anges du ciel qui veillent sur ta couche daignent é-

tempo

alt

celli

Org

tempo

37



Flats

Oboi

E. Angl.

cl. 1

cl. 2

cel.

Fagotti

troub.

*movendo*

*L'abbene*

*Beatrice*

ten-dre leur ai-les sur ton front qui mis-sel-le...

ah! les au-ger du-

Handwritten musical notation for piano accompaniment, including various chords and melodic lines.



Flutes

Oboe

C. Angl.

Clar.

Cl. B.

Fagott

Trombones

*Strim y en Do*

Beatrice

Ciel! On sont ils? Que font ils? Ne vous l'ai-je pas dit?

Arco

pp



*Petite Flûte*

Flûtes 1 2

Oboi 1 2

C. Aug.

Clarin.

Cl. B.

Fagotti

Corn 1 2 3 4

Trumpet 1 2

Trumpet 3 4

Trumpet 5 6

Trumpet 7 8

Trumpet 9 10

Trumpet 11 12

Trumpet 13 14

Trumpet 15 16

Trumpet 17 18

Trumpet 19 20

Trumpet 21 22

Trumpet 23 24

Trumpet 25 26

Trumpet 27 28

Trumpet 29 30

Trumpet 31 32

Trumpet 33 34

Trumpet 35 36

Trumpet 37 38

Trumpet 39 40

Trumpet 41 42

Trumpet 43 44

Trumpet 45 46

Trumpet 47 48

Trumpet 49 50

Trumpet 51 52

Trumpet 53 54

Trumpet 55 56

Trumpet 57 58

Trumpet 59 60

Trumpet 61 62

Trumpet 63 64

Trumpet 65 66

Trumpet 67 68

Trumpet 69 70

Trumpet 71 72

Trumpet 73 74

Trumpet 75 76

Trumpet 77 78

Trumpet 79 80

Trumpet 81 82

Trumpet 83 84

Trumpet 85 86

Trumpet 87 88

Trumpet 89 90

Trumpet 91 92

Trumpet 93 94

Trumpet 95 96

Trumpet 97 98

Trumpet 99 100

Trumpet 101 102

Trumpet 103 104

Trumpet 105 106

Trumpet 107 108

Trumpet 109 110

Trumpet 111 112

Trumpet 113 114

Trumpet 115 116

Trumpet 117 118

Trumpet 119 120

Trumpet 121 122

Trumpet 123 124

Trumpet 125 126

Trumpet 127 128

Trumpet 129 130

Trumpet 131 132

Trumpet 133 134

Trumpet 135 136

Trumpet 137 138

Trumpet 139 140

Trumpet 141 142

Trumpet 143 144

Trumpet 145 146

Trumpet 147 148

Trumpet 149 150

Trumpet 151 152

Trumpet 153 154

Trumpet 155 156

Trumpet 157 158

Trumpet 159 160

Trumpet 161 162

Trumpet 163 164

Trumpet 165 166

Trumpet 167 168

Trumpet 169 170

Trumpet 171 172

Trumpet 173 174

Trumpet 175 176

Trumpet 177 178

Trumpet 179 180

Trumpet 181 182

Trumpet 183 184

Trumpet 185 186

Trumpet 187 188

Trumpet 189 190

Trumpet 191 192

Trumpet 193 194

Trumpet 195 196

Trumpet 197 198

Trumpet 199 200

Trumpet 201 202

Trumpet 203 204

Trumpet 205 206

Trumpet 207 208

Trumpet 209 210

Trumpet 211 212

Trumpet 213 214

Trumpet 215 216

Trumpet 217 218

Trumpet 219 220

Trumpet 221 222

Trumpet 223 224

Trumpet 225 226

Trumpet 227 228

Trumpet 229 230

Trumpet 231 232

Trumpet 233 234

Trumpet 235 236

Trumpet 237 238

Trumpet 239 240

Trumpet 241 242

Trumpet 243 244

Trumpet 245 246

Trumpet 247 248

Trumpet 249 250

Trumpet 251 252

Trumpet 253 254

Trumpet 255 256

Trumpet 257 258

Trumpet 259 260

Trumpet 261 262

Trumpet 263 264

Trumpet 265 266

Trumpet 267 268

Trumpet 269 270

Trumpet 271 272

Trumpet 273 274

Trumpet 275 276

Trumpet 277 278

Trumpet 279 280

Trumpet 281 282

Trumpet 283 284

Trumpet 285 286

Trumpet 287 288

Trumpet 289 290

Trumpet 291 292

Trumpet 293 294

Trumpet 295 296

Trumpet 297 298

Trumpet 299 300

Trumpet 301 302

Trumpet 303 304

Trumpet 305 306

Trumpet 307 308

Trumpet 309 310

Trumpet 311 312

Trumpet 313 314

Trumpet 315 316

Trumpet 317 318

Trumpet 319 320

Trumpet 321 322

Trumpet 323 324

Trumpet 325 326

Trumpet 327 328

Trumpet 329 330

Trumpet 331 332

Trumpet 333 334

Trumpet 335 336

Trumpet 337 338

Trumpet 339 340

Trumpet 341 342

Trumpet 343 344

Trumpet 345 346

Trumpet 347 348

Trumpet 349 350

Trumpet 351 352

Trumpet 353 354

Trumpet 355 356

Trumpet 357 358

Trumpet 359 360

Trumpet 361 362

Trumpet 363 364

Trumpet 365 366

Trumpet 367 368

Trumpet 369 370

Trumpet 371 372

Trumpet 373 374

Trumpet 375 376

Trumpet 377 378

Trumpet 379 380

Trumpet 381 382

Trumpet 383 384

Trumpet 385 386

Trumpet 387 388

Trumpet 389 390

Trumpet 391 392

Trumpet 393 394

Trumpet 395 396

Trumpet 397 398

Trumpet 399 400

Trumpet 401 402

Trumpet 403 404

Trumpet 405 406

Trumpet 407 408

Trumpet 409 410

Trumpet 411 412

Trumpet 413 414

Trumpet 415 416

Trumpet 417 418

Trumpet 419 420

Trumpet 421 422

Trumpet 423 424

Trumpet 425 426

Trumpet 427 428

Trumpet 429 430

Trumpet 431 432

Trumpet 433 434

Trumpet 435 436

Trumpet 437 438

Trumpet 439 440

Trumpet 441 442

Trumpet 443 444

Trumpet 445 446

Trumpet 447 448

Trumpet 449 450

Trumpet 451 452

Trumpet 453 454

Trumpet 455 456

Trumpet 457 458

Trumpet 459 460

Trumpet 461 462

Trumpet 463 464

Trumpet 465 466

Trumpet 467 468

Trumpet 469 470

Trumpet 471 472

Trumpet 473 474

Trumpet 475 476

Trumpet 477 478

Trumpet 479 480

Trumpet 481 482

Trumpet 483 484

Trumpet 485 486

Trumpet 487 488

Trumpet 489 490

Trumpet 491 492

Trumpet 493 494

Trumpet 495 496

Trumpet 497 498

Trumpet 499 500

Trumpet 501 502

Trumpet 503 504

Trumpet 505 506

Trumpet 507 508

Trumpet 509 510

Trumpet 511 512

Trumpet 513 514

Trumpet 515 516

Trumpet 517 518

Trumpet 519 520

Trumpet 521 522

Trumpet 523 524

Trumpet 525 526

Trumpet 527 528

Trumpet 529 530

Trumpet 531 532

Trumpet 533 534

Trumpet 535 536

Trumpet 537 538

Trumpet 539 540

Trumpet 541 542

Trumpet 543 544

Trumpet 545 546

Trumpet 547 548

Trumpet 549 550



[illegible]

Réatrice  
 ♯2 2 2 2 2 ♯9 ♯9  
 Quand je ne fus plus bel - le  
 3 1 2 2 2 2 2 ♯ 2 2 2 2 2 ♯ (♯) (♯)  
 j'ai tué le der - nier an - soir que j'étais fol - - le

Handwritten musical score for a piano piece, featuring multiple staves with complex notation, including triplets, sixteenth notes, and dynamic markings like "ff" and "allarg". The score is written on aged, yellowed paper. The notation includes various musical symbols such as clefs, key signatures, and dynamic markings. The piece appears to be in a minor key, given the presence of flats and the overall somber tone. The handwriting is fluid and expressive, characteristic of a composer's draft. The score is divided into several measures, with some measures containing multiple staves of music. The final measure shows a tempo change to "allarg" (allargando), indicating a slowing down of the music.



39 Largo

Cl. B.

Fagott

Corni

Trumpets

Tronbons

Tuba

Largo

molto

molto

Corni - Sordine

Soli

Beatrice

et qu'il criait de faim!

et le so-leil lui saut les é-toi-les re-ve-



AL  
No. 29

ΜΟΥΣΙΚΟΣ ΟΙΚΟΣ ΚΑΖΑΝΙ  
ΑΘΗΝΑ ΣΤΑΔΙΟΥ 18



Sourdine

Cornin

Корень

Huber

Practice

naient, la just-i-ce dor-mait et les plus me-chanty seuls i-taient heu-reux et fiers



**I**  
Fagott I *SF*  
**II**  
Fagott II *SF*

*rall.*

*tempo*

*SF*

**1** *SF*  
**2** *SF*  
**3** *SF*  
**4** *SF*

*rall.*

*tempo*

*SF*

*rall.*

*rall.*

*SF*

Beatrice

L'abbess

*je ne peux plus!*

*je triomphe*

*c'est au tour des grands rois que la lutte est terrible*

Sœur Eglantine

*C'est aux portes du*

*suivez!*

**Fagott I**  
**II**

**1**  
**2**  
**3**  
**4**

*Sourdine.*

*SF*

Cl. Basse

Beatrice

Sœur Eglantine

*Fai-tes ce que vous voudrez, il fal-lait vous le*

*ciel que la flamme infernale brise les grands élaus - de ses vai-nes fu-reurs!*





Handwritten musical score for "Les Archaïques" by S. Clémence. The score includes parts for Cl. B. 1, Fagotti 1 and 2, Corni 1, 2, 3, and 4, and vocal parts for Beatrice, S. Eglantine, and S. Clémence. The music is in 4/4 time and features various dynamics like ppp and crescendos. The lyrics are in French.

**Cl. B. 1**  
**Fagotti**  
**Corni**  
**Beatrice**  
**S. Eglantine**  
**S. Clémence**

di-re  
 Les ar-chaï-ques l'empor-tent  
 S. Clémence  
 Les cé-lestes pha-lang-es ont ramenné la paix ! . . .

[illegible]



Handwritten musical score for a symphony orchestra, featuring a variety of instruments and dynamic markings. The score is written on multiple staves, with some parts marked "Solo" and "espressivo molto". The notation includes notes, rests, and dynamic markings such as *pp*, *f*, and *espressivo molto*. The score is marked with a large "41" in a circle at the top center and bottom center. The page number "103" is written in the top right corner.

choir I

Cor. Anglois

Clarinet

Clarinet Basso

Fagotti

1. solo I

2. solo II

3. solo III

4. solo IV

5. solo V

6. solo VI

7. solo VII

8. solo VIII

9. solo IX

10. solo X

11. solo XI

12. solo XII

13. solo XIII

14. solo XIV

15. solo XV

16. solo XVI

17. solo XVII

18. solo XVIII

19. solo XIX

20. solo XX

21. solo XXI

22. solo XXII

23. solo XXIII

24. solo XXIV

25. solo XXV

26. solo XXVI

27. solo XXVII

28. solo XXVIII

29. solo XXIX

30. solo XXX

31. solo XXXI

32. solo XXXII

33. solo XXXIII

34. solo XXXIV

35. solo XXXV

36. solo XXXVI

37. solo XXXVII

38. solo XXXVIII

39. solo XXXIX

40. solo XL

41. solo XLI

42. solo XLII

43. solo XLIII

44. solo XLIV

45. solo XLV

46. solo XLVI

47. solo XLVII

48. solo XLVIII

49. solo XLIX

50. solo L

51. solo LI

52. solo LII

53. solo LIII

54. solo LIV

55. solo LV

56. solo LVI

57. solo LVII

58. solo LVIII

59. solo LIX

60. solo LX

61. solo LXI

62. solo LXII

63. solo LXIII

64. solo LXIV

65. solo LXV

66. solo LXVI

67. solo LXVII

68. solo LXVIII

69. solo LXIX

70. solo LXX

71. solo LXXI

72. solo LXXII

73. solo LXXIII

74. solo LXXIV

75. solo LXXV

76. solo LXXVI

77. solo LXXVII

78. solo LXXVIII

79. solo LXXIX

80. solo LXXX

81. solo LXXXI

82. solo LXXXII

83. solo LXXXIII

84. solo LXXXIV

85. solo LXXXV

86. solo LXXXVI

87. solo LXXXVII

88. solo LXXXVIII

89. solo LXXXIX

90. solo LXXXX

91. solo LXXXXI

92. solo LXXXXII

93. solo LXXXXIII

94. solo LXXXXIV

95. solo LXXXXV

96. solo LXXXXVI

97. solo LXXXXVII

98. solo LXXXXVIII

99. solo LXXXXIX

100. solo LXXXXX

101. solo LXXXXXI

102. solo LXXXXXII

103. solo LXXXXXIII

104. solo LXXXXXIV

105. solo LXXXXXV

106. solo LXXXXXVI

107. solo LXXXXXVII

108. solo LXXXXXVIII

109. solo LXXXXXIX

110. solo LXXXXXX

111. solo LXXXXXXI

112. solo LXXXXXXII

113. solo LXXXXXXIII

114. solo LXXXXXXIV

115. solo LXXXXXXV

116. solo LXXXXXXVI

117. solo LXXXXXXVII

118. solo LXXXXXXVIII

119. solo LXXXXXXIX

120. solo LXXXXXXX

121. solo LXXXXXXXI

122. solo LXXXXXXXII

123. solo LXXXXXXXIII

124. solo LXXXXXXXIV

125. solo LXXXXXXXV

126. solo LXXXXXXXVI

127. solo LXXXXXXXVII

128. solo LXXXXXXXVIII

129. solo LXXXXXXXIX

130. solo LXXXXXXX

131. solo LXXXXXXXI

132. solo LXXXXXXXII

133. solo LXXXXXXXIII

134. solo LXXXXXXXIV

135. solo LXXXXXXXV

136. solo LXXXXXXXVI

137. solo LXXXXXXXVII

138. solo LXXXXXXXVIII

139. solo LXXXXXXXIX

140. solo LXXXXXXX

141. solo LXXXXXXXI

142. solo LXXXXXXXII

143. solo LXXXXXXXIII

144. solo LXXXXXXXIV

145. solo LXXXXXXXV

146. solo LXXXXXXXVI

147. solo LXXXXXXXVII

148. solo LXXXXXXXVIII

149. solo LXXXXXXXIX

150. solo LXXXXXXX

151. solo LXXXXXXXI

152. solo LXXXXXXXII

153. solo LXXXXXXXIII

154. solo LXXXXXXXIV

155. solo LXXXXXXXV

156. solo LXXXXXXXVI

157. solo LXXXXXXXVII

158. solo LXXXXXXXVIII

159. solo LXXXXXXXIX

160. solo LXXXXXXX

161. solo LXXXXXXXI

162. solo LXXXXXXXII

163. solo LXXXXXXXIII

164. solo LXXXXXXXIV

165. solo LXXXXXXXV

166. solo LXXXXXXXVI

167. solo LXXXXXXXVII

168. solo LXXXXXXXVIII

169. solo LXXXXXXXIX

170. solo LXXXXXXX

171. solo LXXXXXXXI

172. solo LXXXXXXXII

173. solo LXXXXXXXIII

174. solo LXXXXXXXIV

175. solo LXXXXXXXV

176. solo LXXXXXXXVI

177. solo LXXXXXXXVII

178. solo LXXXXXXXVIII

179. solo LXXXXXXXIX

180. solo LXXXXXXX

181. solo LXXXXXXXI

182. solo LXXXXXXXII

183. solo LXXXXXXXIII

184. solo LXXXXXXXIV

185. solo LXXXXXXXV

186. solo LXXXXXXXVI

187. solo LXXXXXXXVII

188. solo LXXXXXXXVIII

189. solo LXXXXXXXIX

190. solo LXXXXXXX

191. solo LXXXXXXXI

192. solo LXXXXXXXII

193. solo LXXXXXXXIII

194. solo LXXXXXXXIV

195. solo LXXXXXXXV

196. solo LXXXXXXXVI

197. solo LXXXXXXXVII

198. solo LXXXXXXXVIII

199. solo LXXXXXXXIX

200. solo LXXXXXXX

201. solo LXXXXXXXI

202. solo LXXXXXXXII

203. solo LXXXXXXXIII

204. solo LXXXXXXXIV

205. solo LXXXXXXXV

206. solo LXXXXXXXVI

207. solo LXXXXXXXVII

208. solo LXXXXXXXVIII

209. solo LXXXXXXXIX

210. solo LXXXXXXX

211. solo LXXXXXXXI

212. solo LXXXXXXXII

213. solo LXXXXXXXIII

214. solo LXXXXXXXIV

215. solo LXXXXXXXV

216. solo LXXXXXXXVI

217. solo LXXXXXXXVII

218. solo LXXXXXXXVIII

219. solo LXXXXXXXIX

220. solo LXXXXXXX

221. solo LXXXXXXXI

222. solo LXXXXXXXII

223. solo LXXXXXXXIII

224. solo LXXXXXXXIV

225. solo LXXXXXXXV

226. solo LXXXXXXXVI

227. solo LXXXXXXXVII

228. solo LXXXXXXXVIII

229. solo LXXXXXXXIX

230. solo LXXXXXXX

231. solo LXXXXXXXI

232. solo LXXXXXXXII

233. solo LXXXXXXXIII

234. solo LXXXXXXXIV

235. solo LXXXXXXXV

236. solo LXXXXXXXVI

237. solo LXXXXXXXVII

238. solo LXXXXXXXVIII

239. solo LXXXXXXXIX

240. solo LXXXXXXX

241. solo LXXXXXXXI

242. solo LXXXXXXXII

243. solo LXXXXXXXIII

244. solo LXXXXXXXIV

245. solo LXXXXXXXV

246. solo LXXXXXXXVI

247. solo LXXXXXXXVII

248. solo LXXXXXXXVIII

249. solo LXXXXXXXIX

250. solo LXXXXXXX

251. solo LXXXXXXXI

252. solo LXXXXXXXII

253. solo LXXXXXXXIII

254. solo LXXXXXXXIV

255. solo LXXXXXXXV

256. solo LXXXXXXXVI

257. solo LXXXXXXXVII

258. solo LXXXXXXXVIII

259. solo LXXXXXXXIX

260. solo LXXXXXXX

261. solo LXXXXXXXI

262. solo LXXXXXXXII

263. solo LXXXXXXXIII

264. solo LXXXXXXXIV

265. solo LXXXXXXXV

266. solo LXXXXXXXVI

267. solo LXXXXXXXVII

268. solo LXXXXXXXVIII

269. solo LXXXXXXXIX

270. solo LXXXXXXX

271. solo LXXXXXXXI

272. solo LXXXXXXXII

273. solo LXXXXXXXIII

274. solo LXXXXXXXIV

275. solo LXXXXXXXV

276. solo LXXXXXXXVI

277. solo LXXXXXXXVII

278. solo LXXXXXXXVIII

279. solo LXXXXXXXIX

280. solo LXXXXXXX

281. solo LXXXXXXXI

282. solo LXXXXXXXII

283. solo LXXXXXXXIII

284. solo LXXXXXXXIV

285. solo LXXXXXXXV

286. solo LXXXXXXXVI

287. solo LXXXXXXXVII

288. solo LXXXXXXXVIII

289. solo LXXXXXXXIX

290. solo LXXXXXXX

291. solo LXXXXXXXI

292. solo LXXXXXXXII

293. solo LXXXXXXXIII

294. solo LXXXXXXXIV

295. solo LXXXXXXXV

296. solo LXXXXXXXVI

297. solo LXXXXXXXVII

298. solo LXXXXXXXVIII

299. solo LXXXXXXXIX

300. solo LXXXXXXX

301. solo LXXXXXXXI

302. solo LXXXXXXXII

303. solo LXXXXXXXIII

304. solo LXXXXXXXIV

305. solo LXXXXXXXV

306. solo LXXXXXXXVI

307. solo LXXXXXXXVII

308. solo LXXXXXXXVIII

309. solo LXXXXXXXIX

310. solo LXXXXXXX

311. solo LXXXXXXXI

312. solo LXXXXXXXII

313. solo LXXXXXXXIII

31

1. Violon  
2. Pr. Pupp  
2. V. Sim  
cello  
Cello



104  
I Solo  
Flute *pp* *espressivo* *molto*

cl B *pp* Solo

Corno I *Sordini*  
*pp* *espresso*

Tempo  
*sordines toujours*

2. Pr. *pp*  
1. *pp*  
2. *pp* *sur le chevalet*  
3. *pp* *sur le chevalet*  
all. *pp* *sur le chevalet*  
cel. *pp*  
Bass *pp*



Flute

Oboe

C. Aug.

Clarinet

cl. B.

Fagott

cl. Bass. → Solo

Handwritten musical score for woodwinds. The Flute part has a *pp* dynamic marking. The Clarinet part has a *pp* dynamic marking. The cl. B. part has a *pp* dynamic marking. The cl. Bass. part has a *Solo* marking. There are various musical notations including notes, rests, and slurs.

Saxophones I

Cornet

Handwritten musical score for Saxophones I and Cornet. The Saxophones I part has a *pp* dynamic marking. The Cornet part has a *pp* dynamic marking. There are various musical notations including notes, rests, and slurs.

Flute

Clarinet

Handwritten musical score for Flute and Clarinet. The Flute part has a *pp* dynamic marking. The Clarinet part has a *pp* dynamic marking. There are various musical notations including notes, rests, and slurs.

cl. Bass.

Handwritten musical score for strings. The score is mostly empty, with some notes and rests visible in the first few measures. There are various musical notations including notes, rests, and slurs.





106 **43** Andante (comme au 1<sup>er</sup> acte)

Flûtes  
Oboi  
C. Aug.  
Clarim.  
C. Clar. B.  
Fagott.

*do*  
*solo* *expressivo molto!*  
*pp.*  
*Flar II*  
*pp.*

*C. Aug solo*  
*pp* *expressivo*

Corn  
Tuba

**Andante**

1. Violon  
2. Violon  
Violoncelle  
Conti  
Bassi

*pp*  
*sourdines!*  
*pp* *sourdines*  
*pp* *sourdines!*  
*pp* *sourdines!*

*sur le cheval*  
*pp*  
*sur le cheval*  
*pp*



[illegible]



Handwritten musical score for the first system, featuring staves for Flutes, Oboes, Clarinet, Bassoon, and Cello/Double Bass. The Flute part includes a *mf solo* marking. The Oboe part includes a *pp solo espres* marking. The Cello/Double Bass part includes a *pp* marking. The score is heavily crossed out with red ink.

Handwritten musical score for the second system, featuring staves for Cornets. The score is heavily crossed out with red ink.

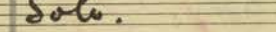
Handwritten musical score for the third system, featuring staves for various instruments including strings and woodwinds. The score includes markings such as *troupe sur le chevalier* and *multo*. The score is heavily crossed out with red ink.



Handwritten musical score for a symphony orchestra. The score is written on a single page with multiple staves. The instruments listed on the left are Flute, Oboe, Clarinet, and Bassoon. The music is written in a key with one sharp (F#) and a common time signature (C). The score includes various musical notations such as notes, rests, and dynamic markings like 'pp' and 'ppp'. There are also some red markings and a large 'X' over the middle section.

Solo.

I Corno.  
(Sounding).



*marcato*

Handwritten musical score for a symphony orchestra, featuring staves for strings, woodwinds, brass, and percussion. The score includes dynamic markings such as *pp*, *ppp*, and *ppp*, and tempo markings like *2. 1<sup>re</sup> / Pupitres*. The notation is in French, with terms like "sur le chevalot" (on the horse) and "Pupitres" (pupitres) visible. The score is written on aged, yellowed paper.



Handwritten musical score for the first system, featuring various instruments and vocal parts. The score includes staves for Flute, Oboe, Clarinet, Clarinet Bb, Horn, Violin I, Violin II, Viola, Cello, and Bass. The music is written in a key with one flat (Bb) and a common time signature. There are large red diagonal lines drawn across the middle of the page, obscuring some of the notation. The lyrics "toujours sur le chevalier" are written under the Violin II staff, and "toujours sauroline" is written under the Cello staff.

Handwritten musical score for the second system, continuing the composition. It includes staves for Clarinet, Clarinet Bb, Horn, and vocal parts. The tempo is marked "Largo" in large, stylized letters. The lyrics "Chœur des Anges" are written above the vocal staves. The score includes various musical notations such as notes, rests, and dynamic markings. There are red diagonal lines and a large red circle with the number "45" in the center of the page. The lyrics "Alto tutti soli" and "Tutti soli" are written under the vocal staves. The tempo "Largo" is also written at the bottom of the page.



111

S. I. *ma- ris stel ... la a- ne a- ne ma ris stel.*

S. II

C. I

C. II

*la a ne*

*La Vierge*

*a. toute à me qui pleure à tout peché qui*

*La Vierge*

*par- re jou- vre au sein des é- toi- les mes mains plei- nes de grâ- ces.*

*La Vierge*

*il n'est pe- ché qui vi- ve quand - l'a- mour a pri- é il n'est*



La Vierge

3 3 3 3

à-me qui meurt quand l'a-mour à pleu-ré et si l'a-mour se-

La Vierge

3 3 3 3 3 3

-ga-re aux sen-tiers d'i-ci bas ses lar-mes me re-trouvent

La Vierge

2 2 2 2 2 2

et ne ré-ga-rent pas!

Chœur des Anges  
de très loin

a-ue a-ue ma-nis

Chœur

3 3 3 3 3 3 3 3

stel-la a-ue ma-nis stella a-men.

Rindeen