

VRG _ Folder _ 0078



The bundles were heaped near the furnace and with papers over them. They were then placed in a pail which was filled with water.



and then cleaned with a brush.



the clean ones first with a brush.



and later for the basket by the trained assistant.



for sorting



into labelled baskets



The clean the from the Radio-labelled



and sorted into the proper class

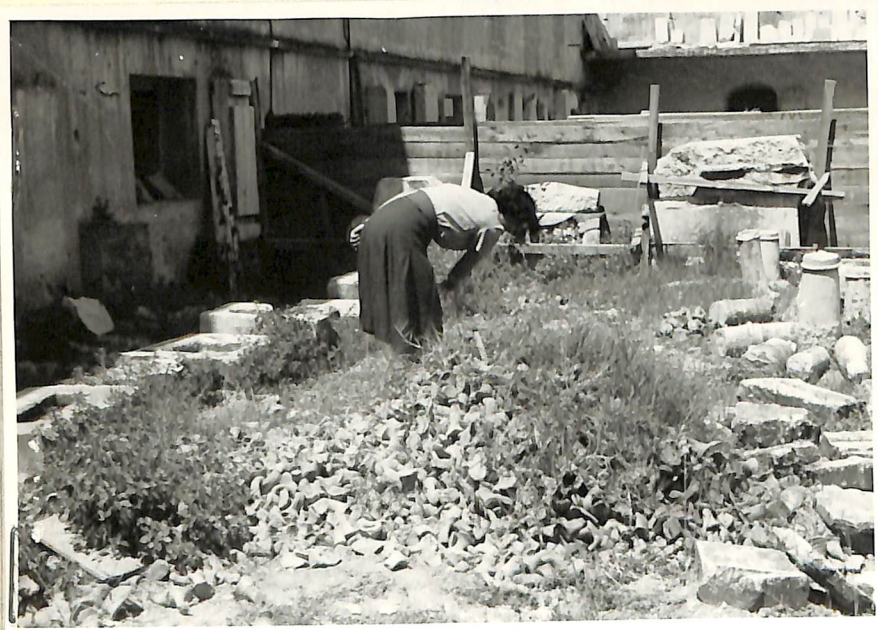


according to shape & size

NATIONAL MUSEUM

II. VT. 53

IN EPIGRAPHICAL
COURT →
↓



← REMAINING
HEAD OF RECT.
"DIFFICULT" KNIDIAN
←

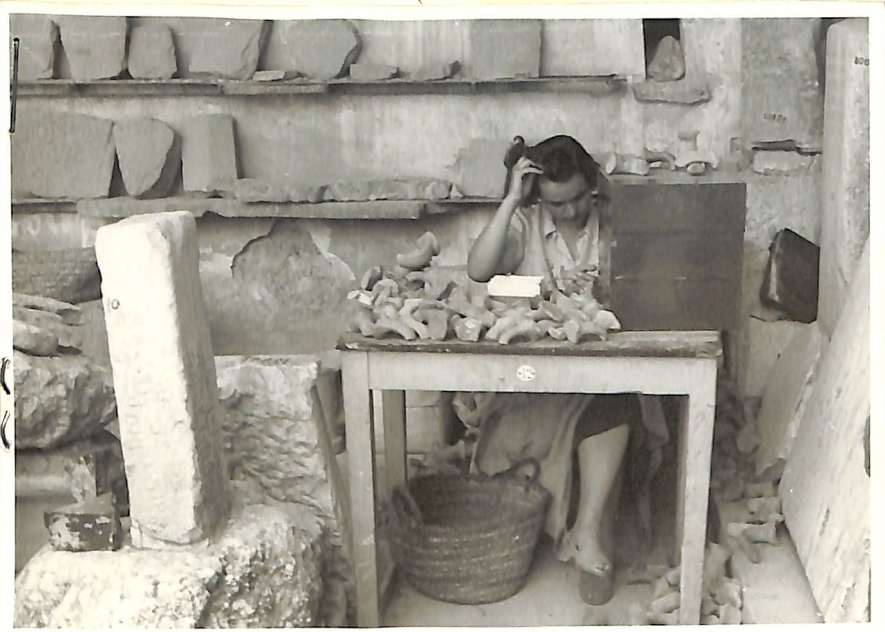
IN INNER APOTHEKE

— PLACE OF SAN
CABINETS —

KNIDIAN SORTED BY
KT NUMBERS.

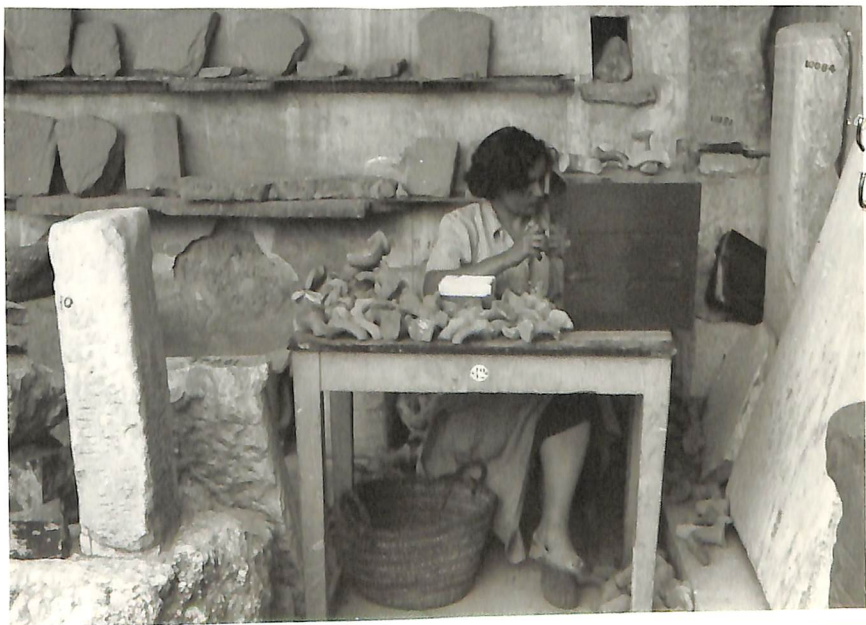
BACKGROUND, SOME SUPERIOR,
FOR PHOT., KT ORDER





NATIONAL MUSEUM
11. VI. 53

IDENTIFICATION
OF
KNIDIAN
STAMPS



(about 10-11. VI. 53, working these myself, turned the table
to face N along the corridor, instead of into the glare, as here)



APOTHEKE FLOODED

13. X. 53 - water
had subsided.





no. 2 each of circular stamps (left foreground)
and of diamond shaped stamps (left background)
and rectangular chunks (right foreground)



The Rhodian were sorted in more detail
along the wall to the SE corner of the court,



Then the coins were sorted
and were found to be of the same date.



Then sorting was done along the east half of the south side of the court of
the Epigraphical Museum and the washing at the south end of the cross walk.
The stones to the left of the large are smaller piles (not visible) of Rhodian coins.



heaped at places set out in
advance (by estimate, going by
Ager's guide)

O might be omitted for a while



a list of names on the
handles, which were marked with
the numbers given to these names
by Nilsson in his alphabetically
arranged catalogue.
(One of these handles has been
lost in the way, pile.)

NATIONAL MUSEUM

special notes on form

[17.VII.78 How
been excerpted
by MBW from line
excerpt, records.]
[Originals of excerpts
left with VG, &
file in STANDARDS
notes]

Jars noted behind the barricade

Stand in NE corner of room (i.e. diagonal fr. outside) includes micaceous jar, Byg. globes, a LR Knidian, and other items LR or later.

Against them, toward S, series of big Doric items which have just been numbered and examined by ELW.

Among or next to them, a Bosch Jar (T?) and 2 tubular-footed rather large.

Out away from the wall, a lot of frags., some early guth. Among them, large parts of an SOS jar (the marks can be seen {{ @ }}) which stand ELW as big of Brindisi shape. There is a sharp ridge below the rim { I can't remember if that is regular 2 or is it a chronological indicator.

With this lot, a spatula, not v. tall.

SE corner, a lot of big frags., again including SOS (without the ridge). Against them, some more of ELW's newly numbered items. also a tub. foot, upper part of a butte, a Knidian w. some handles per., w. dim ^{handles} part of the shape, a late Coan (?) top group; a big Ornoid (?) of Doric jar with 3 vert. handles on shoulder near neck, v. short neck, heavy rim; also battered Byg. heavy ribbed, lumpy, bottomed jar such as is sometimes stamped, but see no stamps.

Against S wall: VG 15-18 (but note VG 17 is now called EM L 170) also Kn. jar KT 36 EM 5, also L 85, all early, etc.

cup - 100 + cc

$$1 \text{ cup} = 525 \text{ cc}$$

$$\begin{array}{r} 525 \\ - 100 \\ \hline 425 \end{array}$$

-16
15.VII.54

7.01

National Museum

Mound of ^{some of the} jars transferred from ^{East} Tigris area, and stored behind barracks in SAH area.

(Pent. 16.VII.54)

Vg 15 (Churruan) Ht. .674; dia. .305

Early H. L. jar

Ht ca. .18

277.10

White on red in

Capacity: 1 μ ego min (1 μ ego + cups Ht)

penet:

Describe: red resembles kind in

Trip across

Ek p p e a t o s

Mart Soupa v y s

color and ground shape. Toc: a tapering

collar concave below, rim, a flat drip;

handle descends but is sloping with short

top - of late 4th Rhod jar from Tigris

Seems to be stamped: concave impression only under toe

Faint impression on base of handles

Vg 16

P. Ht .997; dia .27

Late Coan

Ht .27

277.11

Capacity: 1 μ ego Δ + (1 μ ego - 2525)

Dark purple red, broad handles, double

apert. Grooved from the wheel, Ht note,

and red pushed in flat. Rim, broad roll

EM L 170 (to be used in ELW's pub. Remains remembered in uniformity with others, 17.V.54)

Vg 17

Dark

Ht .1024

dia .275

Spoken - for jar

with ca. .965 - i.e. most popular is hollow (Ht of apert .29)

277.12

Capacity: 1 μ ego Δ min (1 μ ego + cups

3.VII.55

Note 2 sets of measurements for measuring apparatus.

Using: 1 μ ego Δ = 26000

1 μ ego = 5000

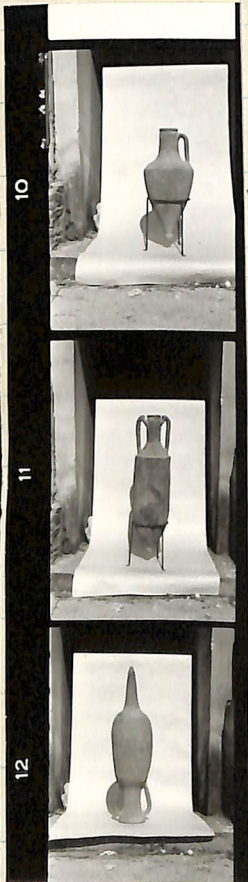
1 cup = 540

very different from the one used for the large jar (ELW)

Red clay. Heavy.

For Vg 17, 27 (19820) (Went out for ELW)

26000
6180
19820



(2.)

VG 18 278.33 HT .80 diam. .46 (incl. base) (Abbas.)

Big early jar

HT ca. 23 - 23.5

27.00-54

(Heavy marine deposit)

considerable work done on this jar to try to clean it (AS with instructions from Tami Kadoguzis)

(This jar from another part of the site)

but succeeded only in cleaning round marks and top. This latter came off, and AS glued it on so successfully that we could measure it with water (no leak).

(not plant, 16.5th diam)

278.34

Heavy down-turned rim; rather thick handles,

no marks on top, but we have not yet got the deposit off to lower attachments. Top, heavy ring w. sh. stem. (278.35, 36) clay: upper buff upper part. Top, surface shows rather thick light slip, middle (on unpolished side) reddish buff clay w. red core.

Capacity 2 p. gals + 1 cup + 350 cc

(we had put in about 300cc to compare for one hour in spilling when AS left, 2 amplifiers on to see and 2 more to show to water to outlet)

25475
x 2
50950
525
350

26,000
2
52,000
525
250
52,875

51,825

KT 36 EM 5

HT .836 diam. .31

274.13

Nearly complete

HT ca. 27

Knide jar, one

(Capacity could not be measured because of cracks in body.)

handles missing



vg 18 details

(30)

L 85

277.14

P. HT .853

(up gr)

diam. .379

Stamped pig jar:

SID / E

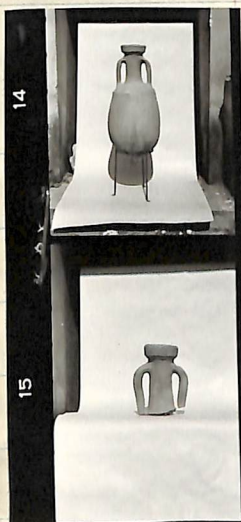
HT ca. 195

Capacity: 1 megal + 1 mikro + (1 mikro - cups)

(relief letters,
upside down
on rim)

Graphest on shoulder, large letters III

photographer's side: A A / > /

In photo of jar,
stamp is 8 left.

L 86

277.15

PHT .34-

Made of stamped

pig jar:

S
F
E
0
2

on rim in
(relief letters)

27.04.54

E.M. Cloud measuring
measuring apparatus

$$1 \text{ cup} = 525 \text{ cc}$$

$$\begin{array}{r} 525 \\ - 400 \\ \hline 125 \end{array}$$

$$1 \text{ микрдо} = \text{cups IIII IIII} + (1 - 400)$$

small dmydo

$$9 \text{ cups} + 125 \text{ cc}$$

$$\text{or } 4850 \text{ cc}$$

$$\begin{array}{r} 525 \\ \times 9 \\ \hline 4725 \\ + 125 \\ \hline 4850 \end{array}$$

$$1 \text{ м-г-до} = \text{микро IIII} + \text{cups II} + (1 - 350)$$

large dmydo

$$\begin{array}{r} 525 \\ - 350 \\ \hline 175 \end{array}$$

$$\begin{array}{r} 4850 \\ \times 5 \\ \hline 24250 \\ 1050 \\ 175 \\ \hline 25475 \end{array}$$

$$\begin{array}{r} 525 \\ \times 2 \\ \hline 1050 \end{array}$$



measuring of Vg 15, 16 (E.M.)

May 9, 1963

Dear Semi,

Would it be possible for us to photograph some of your stamped handles one afternoon early next week?

We have quite a lot of work still to finish the National Museum handles listed to be photographed. But apart from this, I have received some fresh film which I must use in Egypt later this month, and I am anxious to be sure of knowing the right exposure before I go. It would be a great help if we may make our test by carrying on with necessary photography on National Museum handles.

As ever,

Yours

14. V. 63

MET took an orig. of this, and the next day reported that we have permission to plot on Wednesday, May 15.

N. MUS. MISCEL.

Amphoras exhibited in the N. Museum
before the war. They should be found.

2 Rhodian:

No. 2405 ^{from Athens} of Mapouias, ep. Πρωτοστράτος
No. 2407 ^{from Athens} " " Δαμοκρίτης " ΑΥΤΙΣΤΑΤΟΣ

1 Thasian of Πυθίων Λυ(with basin (vertex)

1 Roman, that stood beside the Rhodian - cf. note of
Vg in pencil in Dumont basin drawing of
"Rhodian"

These found ^{by MET} in old inventory saying they ^{exhibited} were in
"Ερμ(αρ)ιον (each and each)" (nos. given). Hts. given

I have an indefinite recollection of having seen
the Thasian jar, broken, in the Αποθήκη τῶν
ἐκείας. But none of the others.

MET knows what has happened to the ἀποθήκη
τῶν ἐκείας stuff. It has been moved again
since we found the piece of the Αὐτίστη. Roman jar
and is now in an apotheca further east, ^{not} in the corridor
where we found it, though not opening on to it.

Photography still to be done in N. Mus.

Rhodian. V. little has been done. See notes of taking in folder of N. Mus. Rhodians.

6.V.61 Knidian. There is still quite a lot. See folder KT CHECK AND LISTS OF NEEDED PHOTOS for a list of discrepancies for KT ~~817~~⁸³⁴ - ~~892~~⁷ and KT 2017 - 2080. From KT 898 to 2016, and from KT 2081 - end, no check for illustration of types, and hence no lists, have been made. I once figured (24.V.60 - see special note on "Check - Tally of KT Examples, and Select for Illustration", batch of notes beginning 14.IV.59) that I needed fully 30 working days to finish the check, possibly with some photography fitted in. Subsequent operations have not really reduced this very much. I then figured we would need to expose about 20 rolls of film on the items which would be selected in this remaining check.

The rest of the N. Mus. photographed needs have been fairly well covered, except that certain rolls turned out flawed - lens not locked, or something. In particular, Roll 463, which includes more than half the photos of Chians.

See a few other items needed, Misc., in the lists of 15.III.60; + 5.VI.60
 (Thurs. 10.50 AM)
 still 6
 20.V.61

Ready for the house

new cards
have been made

National Museum

Small groups

- 1) "Zn qn": ZHEM 1-17 (EM 12 cards to exist = LK EM 686)
- 2) "Imperial": AVT. EM. 1-8
- 3) "Corcyrean": KER. EM. 1-25
- 4) "Korinthian": KOR. EM. 1-2
- 5) "Parian": PAR. EM. 1-11
- 6) "Ikian": IK. EM. 1-3
- 7) "Chetian": ZAM. EM. 1-3
- 8) "Eretrian": EP. EM. 1
- 9) "Kolophonian": KOA. EM. 1
- 10) "Boeotian" ⊕ BOE. EM. 1-3

Knidian (typical)

Now marked BON, and the handles put with the general lots.

1. KT 37
2. KT 182
3. KT 525
4. KT 623
5. KT 687
6. KT 1001
7. KT 1015
8. KT 1525
9. KT 1540
10. KT 1583
11. KT 1606 (2. examples)

12. Κλερκ (monogram)



13. KT 1400

- 14.

Early Knidian

- 15.

Late Knidian

16. ΚΛΕΥΠΙΘΗΣ amphora
(ss 1968)

17. ΚΛΕΥΠΙΘΟΣ amphora.
(ss 9012)

Άγνωστα

- 18.

Stoa of Attalos
February 16, 1961

Dear Semmi,

1) Maria will tell you that we would like, if not inconvenient to you, to photograph amphora stamps in the basement as before, for a number of afternoons, beginning perhaps next Tuesday. (February 21). I should plan to come about 1:30 and stay for a time, and Maria would finish the film.

Since so early in the afternoon I cannot have my assistant Andreas Dimoulinis, would it be convenient for me to bring my volunteer assistant Philippa Wallace (Professor Wallace's daughter)? She would be able to help Maria and me in many ways, preparing the material, putting it away again, making lists, etc., as she does here. This would make our work go more quickly.

2) I would particularly like to ask if Maria could bring here for cleaning and mending the fragments of that Roman jar from the Antikythera wreck. I think your mender is too busy to do it, and just now we have a mender free. The jar is much needed for photography and a profile drawing, for that joint publication of which you know.

Today we heard (a letter to Poly Dimoulini) that Lucy and Alison have taken plane reservations on March 31st.

Yours,

VIRGINIA GRACE, American School of Classical Studies,
Athens, Greece

Grant No. 1544 (1953), \$1,000. Ancient Greek wine jars.

The Society's grant is making possible a project essential to the comprehensive study, which the grantee is preparing, of ancient Greek standard wine containers. Important series of these two-handled earthenware jars had indications of the place of origin and the date stamped on their handles, so that they provide valuable evidence for one of the principal branches of ancient commerce. The stamps were apparently endorsements of capacity, and contain the names, and sometimes the titles, of various responsible persons; hence they are a source of information on the administration of the issuing state. Finally, the stamped fragments, to the increasing degree that their chronology is being established, serve to date the many and widespread excavation deposits in which they are found.

The specific project which has been assisted by the grant is the classification and recording of the nearly 18,000 stamped handles in the National Museum, Athens, in particular the Knidian, those, that is, from wine jars made in Hellenistic times in Knidos, a port city of Asia Minor opposite the island of Rhodes, which must have been the outlet for a wine-growing hinterland. The Knidian form by far the most numerous class in the National Museum collection; totalling nearly 14,000, the National Museum Knidian are also the largest collection of their class in existence. Taken together with the second largest group of Knidian, those found in the excavations of the Athenian Agora, they show that the stamped Knidian jar was the common wine container in Athens in the Hellenistic period. Of this which is in some ways the most important of the stamped series, no definitive study could be published without taking into account the collection in the National Museum.

Toward the ordering of the mass of data to be obtained from this huge collection, a numbered and alphabetically arranged repertory of

Reprinted from YEAR BOOK OF THE AMERICAN PHILOSOPHICAL SOCIETY, 1953
269-270

Printed in U. S. A.

270 REPORT OF COMMITTEE ON RESEARCH

Knidian stamp types was prepared in October, 1952, the chief basis of which was formed by finds in the Athenian Agora and in Delos: the number of distinct types came to just over 1800. Procedure with Knidian at the National Museum, which began early in November, 1952, has been as follows:

(1) Identification and numbering of handles by stamp types. (2) Photography of new and corrected types, done currently with the identification. (3) Arranging of handles for storage in order of type numbers. (4) Checking of identifications by groups of duplicates, and labelling of drawers in which the handles are stored. (5) Photography of superior examples, for better illustration of the repertory. (6) Numbering of examples of the types. (7) Adding to the copy of the repertory a tally of examples, and notes from the study of assembled groups, e.g. on secondary stamps, on small handles indicating fractional containers, on dates indicated by fabric, etc.

This program has been completed to the following extent: About 10,000 Knidian handles have been classified, numbered, stored in order, their identification checked against photographs of the types, and the drawers labelled. Of the rest, a good part have stamps too worn and dim for precise identification; others will be identified after further study. Space for additional examples has been left in the drawers.

As to photography, all new and corrected types have been photographed, and somewhat over half the work has been done which will be desirable for the illustration of superior examples. Rather over a quarter of the classified handles have received their example numbers; this work will be continued by the assistant needed to fetch and carry for the persons who will proceed with the photography and the study of assembled groups. In the latter study, a beginning has been made, enough to give an idea of the harvest to come.

Some results of the investigation may be cited now: about 180 new stamp types have been identified, and about 150 types which were previously incompletely known are now corrected or restored. Further bulletins may be published when the present project is complete. The results of the investigation as a whole will be incorporated with information derived from the grantee's study of the collections from the excavations in Delos and the Athenian Agora, to make the Knidian volume of a corpus of wine jar stamps. This volume will be published by the American School of Classical Studies, Athens, as part of the final publication of the results of the excavations of the Athenian Agora.

The Society's grant has provided a large part of the costs of photography and manual assistance needed for the National Museum project. Most important, however, is its gift of the means of maintaining a classified arrangement of some 14,000 specimens, the drawer storage which not only renders individual stamps accessible for verification, but also enables one to make comparisons of whole series, facilitates in many ways every stage of the present investigation, and will continue to open the material to further studies, for instance in the related field of numismatics.

16.01

NATIONAL
MUSEUM

TALLIES

19-X.59

16.02

in SA

using notes for
N. Mus.

COUNT OF HANDLES IN NATIONAL MUSEUM. (AΔ)

	<u>Read</u>	<u>illeg. unread</u>	<u>total</u>
RHODIAN	2702	724	3426
THASIAN	(we have subtracted the non-Thasian A.B.)		287
KOAN			102 ✓
LATIN			184 185
CHIAN			143 145
" Lagynoi			21 22
SAMIAN? "Cretan"	/		3
SINOPIAN			26
CHERSONNESAN			6
KORINTHIAN			2
KERKYREAN (?)			24 25
PAMPHYLIAN			7
PARMENISKOS Gr.			58 60
IH Gr.			17 16
PARIAN			11
IKIAN			3
ERETRIAN			1
KOLOPHONIAN			1
BOSPORAN? ⊕			3
IMPERIAL Gr.			8
PUNIC			3
MISCELLANEOUS	(we have subtracted 21 York)		451 453
LATE KNIDIAN			683 687
EARLY 4			155 160

[OVER]

total without (K) 5625

KNIDIAN

readilleg. unread

total of 1st p. 5625

426

○ with book.

133

◎ type 366A without
EM numbers

100

○ with forepart of lion

1117

□

9948

1776

12724

⊗

18349

⊗ This figure is a little short, because we do not have counts here in the SA of a few lots of unread, or half-read Kindian in drawers. These are all in the next-to-last column of ^{Kindian} drawers, or waiting plots in last column. Altogether, probably about 100 more handles.

* Tally of May 1949, 3rd page: 546 + 1 ^{28 Nov 59} ~~(this is only for LK, not ASE)~~

Journal entries: p. 56; 7, 7b; 8b; 10 (then 8b and 1), 10b (noted); not 8b & d
12, VII. 53 (LK); 11, 11b (put in drawers); 21 (Thasian); 24 (pub. of Kom); 28 (Cass. VII. 54) - 296
33-33b, 35b (LK), 36 ("on 8 drawn of F. ad. op. 2"); 37b (L12-ER; Gm, Chin); 38 (Chin,

Pamphylus (qz); 38b (L12-ER)

39, 40b, 41

D. Mus. : Sorting out various Small Groups,

for numbering and recording

(or most of them)

These groups, ~~had~~ been sorted away from the Miscellaneous in our earlier work here (see Journal, pp. *) and some classes have already been numbered and recorded. We have:

E(early) K(nidian)	EM 1- ¹⁵⁵ 152	4	all 69 lost or (on duplicates) (X)
L(ati) K(nidian)	EM 1- ⁶⁸³ 676 (LK)	14	" " (X)
KR.	EM 1-102	2	" "
L(atin)	1- ¹⁸⁵ 185 (L)	5 (+ 8)	lists from ELW
Some are marked (Thasian)	A.B. ³³⁴ 325 (P)		our copy, w. Bon nos.
BON, in the same series,	Chian	X EM 1- ¹⁴³ 142 (w. Bon nos.)	on duplicates
" Cagjini	Tag. EM 1-21	1	" "
Samin ? ("Gretan")	Zap. EM 1-3		
Sinopean	Ziv. EM 1-26	1	on dup. 1. X. 59
Chersonesean	Xep. EM 1-6		on dup. Havn aligine
Korinthian	Kop. EM 1-2	1	on filled in
Kerkyrain (?) (KEP)	Kep. EM 1-24		the final figures
Pamphylus	Tap. EM 1-7		up to date

(KEP) Also perhaps Mis. EM 336-344 341 with stamp on cover all.

(CONT. P. 2)

(L) L 61 is not Latin, but Greek, reading 'Εργητ (v. tr.). It is now Mis. EM 410.

(+) Tag. 3 seemed not to belong, is now Mis. EM 144

(P) Of these, A.B. 46, were not found by us; and the following are not Thasian: A/B. 126 (Krid.), 155 (Bodran?), 157 (vict. w. trophy), 160 (LK EM 90, but pub. Bon 1833), 167 ("Gretan"), 168 (KT 509), 169 (num.; Bon 2185), 170 and 170bis (LK)

(*) Duplicate stamps are assembled on single particulars.

(LK) LK EM 96 was seen after working to Thasia. Now called A.B. 331.

See over

19. x. 59

Gm. 29. VT. 60

Last Thesis number is AB 334

plus number A.B., but
not Thesis

	<u>48</u>
<u>TOTAL</u> no. of Theses:	28 6
+ 3 bio numbers	3
	<u>289</u>

(Small Groups, cont.)

Parmeniskos Gp. ^{Drawings} ~~54 57~~ 58 (used in 58) 2 on duplicate (incomplete)
 IH Group IH EM 1-17

Parian HAPION EM 1-11

IKIAN IKION EM 1-3

Erastrian EP. EM 1

(Final number

Kolophonian Kod. EM 1

as of 1.8.59)

Bosporan (1 \oplus) BOE. EM 1-3

Imperial Gp. AYT. EM 1-8

Punic ϕ CIV. EM 1-3

1.7.59

Miscellaneous Mis. 1 - ~~454~~ 455 (incl. Olympian)

Kn. read

19 X 59

16.07

<u>Drawers</u>	<u>Handle,</u>
1-4	151
5-8	158
9-12	165
13-16	172
17-21	215
22-29	303
30-35	254
36-50	584
51-58	310
59-81	940
82-92	438
93-115	948
116-139	1028
140-163	980
164-187	1040
188-205	786
206-230	1058
231-242	448

9948

(19.8.59)

Take from counts of drawers in
1953 (-4?), beginning in X.53.
Not absolutely right by this time,
since some additions and changes
have been made.

4.8.59

Count of remaining Kn. drawers:		
(As called to me)		
Drawn 243	45	(KT 1907-1944)
244	38	1945-1977
245	36	1978-2016
246	40	2017-2057
247	29	2059-2073
248	39	2076-2114
249	26	2115-2185 and no KT
"Big pieces"	2	
"Sec. st. unit main st."	20	
"on roll 282, 283"	11	
used on roll 279, 284	17	
illeg. for OE.	33	are then already pg 1 in 7
runs on unit type	11	
illeg. 000	36	
"Toy sample housing"	26	
"Lateral 442"	28	
"Longitudinal plate"	6	idms.
"New unit type"	31	

stamp. -- "

same day — I see that this ^{large} case of Illeg. has
a sign on a stick inside:

"

KAN. ILLEGIBLE




Dep't ~~242~~ 977 + 8 = 985

+ 5 = 990

"

7.X.59

Note there is in addition a supplementary lot of
unread Ku. , partly filling another case, as well
as various other lots of Kindin, O w. prompt, 366A,
etc. See separate paper on Cases Needed for Unread.

All these unread still in keps should be counted,
and ^{also} possibly the last drawn of Pch. unread, since I
wasn't full, and singles have been added to.

The Kindin should be looked at by ME before
final relegation, and counted afterwards.

The Plotkin should be looked at by AD before
being counted as ~~reads~~ unread. I hope today?

N. Mus. - Tallies

See a paper dated 17.X.59 (beginning) kept in folder of N. Mus. Small Groups for tallies of these and of Miscellaneous.

Tally of Rhodian, see separate papers of 29.X.59 and of 2.XI.55. The old one (which had been mislaid) and the new one correspond ^{with each other} exactly, as E items read. The unread in the bottom drawers, counted in 1955, ^{have} ~~have~~ not been recounted now. [⊗] Items added to the various columns appear in pencil. These have been taken from the various odd-lots A & has been clearing up.

⊗ 17.X.59
A & has since counted them into his case

Tally of Kindian: this will have to be gradually taken from the drawer-totals I think. An estimate, or roughly accurate figure, can be taken from the original counts, if desirable to publish survey article before finishing K & T tally.

On maps of Illegible: see entry of 5.VII.54, back of Journal p. 27.

Illegible ☐ Kindian put in a large empty case. Counts as they went in, came to 848

See again entry of 3.X.54, back of p. 30:

The case has now been filled: "Total which fill, slightly

Actually they are more than level, a case .64 x .55 x .55 outside ~~inside~~ measurement, or under 20% of a cubic meter: 977.

Since then, more have accumulated w. Illeg. ☐

(OVER)

W

$$\begin{array}{r} 75 \\ 75 \\ \hline 150 \\ 15000 \text{ cubit} \\ \hline \end{array}$$

(5)



$$\begin{array}{r} 265 \\ \times 29 \\ \hline 2385 \\ 5300 \\ \hline 7685 \end{array}$$

$$\begin{array}{r} 197 \\ \times 197 \\ \hline 1773 \\ 17730 \\ \hline 38829 \end{array}$$

25

$$\begin{array}{r} 21) 56 \\ \underline{42} \\ 14 \end{array}$$

1.55 x .53 x 1.00 (Total volume)
 .84 x .56 x .95 (Diameter of ball)
 .70 x .75 x .59 (Weight of ball)
 .45 x .44 x .44 (Weight of ball)

new order, early, early about 1

10. X. 01

A case .48 x .50 x .50,
we are now using as part of our
furniture.

7.75.59 16.11

Use this in summing up unread

N. Mus. : Cases needed for Unread

For Kindin unread O w. border,
(not 366 A)

1 case, ca. .55 x .55 x .38
or rather bigger

For KT 366 A:

There is one drawer w.

EM 1 - 38

There is also a heap,

which needs

1 case, ca. .55 x .26 x .38

(i.e. one of the half cases
which I see around)

(For KT unread w. fringed edge,

there exists ———

1 case ca. .55 x .26 x .38)

which is now full of

part of the O w. border.)

(For additional Kin. unread ☐,

there exists a suitable case, ca. .50 x .40 x .25)

which they now partly fill

Use this
case
(not full)
for
this

For Placidia unread

Now in better drawers.

(on old tally) : 539

+ Another heap, ca. 300 or 350

889

16.75.59 with Sam's permission, we
take a case .55 x .53 x 1.00

There would need a single case of
(at least)

size equal to that of the large
(.64 x .55 x .55 inches)

case of Kindin ☐ unread. ☒

we proposed 200 ☒ 200 ☒ 200 ☒ 200 ☒ 200 ☒

Probably none ☒ ? Decided not
to.

(1)

16.12

Kindin Drakon Tallies

(beginning, see ground journal, preceding days)

12.XI.53	Kindin 92	50 hauls	16.XI.53	Kindin 116	36 hauls
	93	41		117	49
13.XI.53	94	40	17.XI.53	118	38
	95	41		119	38
	96	43	18.XI.53	120	50
	97	31		121	36
	98	34		122	37
	99	41		123	39
	100	47		124	45
	101	40		125	47
	102	40		126	41
14.XI.53	103	37	19.XI.53	127	43
	104	41		128	48
	105	46		129	43
	106	46		130	43
	107	50		131	42
	108	32	20.XI.53	132	45
	109	45		133	45
	110	49		134	49
	111	39		135	44
	112	38		136	45
	113	45		137	48
	114	36		138	41
	115	46		139	43
	948			1028	
	(over)				

(20.8.53)	Kindi	140.	51 handle	(23.8.53)	Kindi	164	34 handle
		141.	42			165	40
21.8.53		142.	42			166	49
		143.	42			167	37
		144	49			168	40
		145	35			169	51
		146	53			170	46
		147	48			171	38
		148	31			172	35
		149	49			173	36
		150	42			174	38
		151	42			175	46
		152	36			176	37
		153	25			177	41?
		154	42			178	44
		155	41	24.XI.53		179	42
		156	41			180	41
		157	29			181	31
23.8.53		158	51			182	42
		159	37			183	51
		160	42			184	51
		161	33			185	48
		162	43			186	50
		163	34			187	42
		<hr/> 980				<hr/> 1010	

(2.)

(24.XI.53)

Knidian 188. 52 handles

189. 45

190. 45

191. 41

25.XI.53

192. 40

193. 43

194. 42

195. 46

196. 38

197. 45

198. 46

199. 47

200. 43

201. 46

26.VI.53.

202. 48

203. 35

204. 50

205. 34

 786

2

2.XII.53

Kurdian 206. 48 handles

207. 46

208. 38

209. 47

210. 47

211. 32

212. 44

213. 47

214. 38

215. 52

216. 40

217. 24

218. 44

219. 48

220. 46

221. 37

222. 53

223. 42

224. 22

225. 57

226. 45

227. 34

228. 44

229. 44

230. 39

(4.XII.53) Kurdian 231. 46 handles

7.XII.53

232. 51

233. 48

234. 38

235. 36

236. 43

237. 36

238. 26

239. 36

8.XII.53

240. 40

241. 31

242. 17

448

4.XII.53

230. 39

1058

(1.)

16.16

16 X 153 Knidian 116. 36 handles

117. 49

17 X 153

118. 38

119. 38

18 X 153

120. 50

121. 36

122. 37

123. 39

124. 45

125. 47

126. 41

127. 43

19 X 153

128. 48

129. 43

130. 43

131. 42

20 X 153

132. 45

133. 45

134. 42

135. 44

136. 45

137. 48

138. 41

139. 43

23 X 153

Knidian 164. 34 handles

165. 40

166. 49

167. 37

168. 40

169. 51

170. 46

171. 38

172. 35

173. 36

174. 38

175. 46

176. 37

177. 46

178. 44

179.

(over)

12.XI.53

Knidian 92. 50 handles

93. 41

13.XI.53

94. 40

95. 41

96. 43

97. 31

98. 34

99. 41

100. 47

101. 40

102. 40

103. 37

104. 41

105. 46

106. 46

107. 50

108. 32

109. 45

110. 49

111. 39

112. 38

113. 45

114. 36

115. 46

20.XI.53

Knidian 140. 51 handles

141. 42

21.XI.53

142. 42

143. 42

144. 49

145. 35

146. 53

147. 48

148. 31

149. 49

150. 42

151. 42

152. 36

153. 25

154. 42

155. 41

156. 41

157. 29

23.XI.53

158. 51

159. 37

160. 42

161. 33

162. 43

163. 34

28. TX. 59

NATIONAL MUSEUM

COUNT OF RHODIAN (4Δ)

Λογαριασμός Ροδιαίων Θαβῶν E.M. (ἑξαετηρίων)

<u>A</u>		<u>B</u>		<u>Γ</u>		<u>Δ</u>	
1)	52 +1	17)	42 +1	33)	45	49)	41 +1
2)	50	18)	47	34)	45	50)	50
3)	48	19)	46 +1	35)	48 +2	51)	49 +3
4)	53	20)	45 +1	36)	53	52)	46 +1
5)	48	21)	51	37)	46	53)	18 +1
6)	50 +1	22)	46	38)	45	54)	22
7)	56	23)	46	39)	52	<u>226</u>	
8)	49	24)	46	40)	45		
9)	47	25)	46	41)	48		
10)	49	26)	47	42)	39		
11)	49	27)	44	43)	48		
12)	54	28)	46 +1	44)	40		
13)	49	29)	49 +1	45)	48		
14)	55 +1	30)	48	46)	50		
15)	43	31)	45 +3	47)	51 +1		
16)	51	32)	44 +1	48)	47		
<u>803</u>		<u>738</u>		<u>750</u>			

Κολῶν A 803 + 3

" B 738 + 9

" Γ 750 + 3

" Δ 226 + 6Σύνολον: 2517 + 21

↑ Sum corresponds exactly with list of 1955.
See attached.

16.19

ADDITIONS TO RHODIAN TALLY

7. X. 59

9. X. 59

ΝΥ προοτεδωρ ελκ Ροδικια Ι m

From "dypails"

FROM OLYMPIEION

Drawn no.

Drawn no.

Drawn no.

3) 1
4) 2
5) 1
6) 1+1+1
7) 1
8) 2
11) 1
12) 1
13) 1
14) 1+1+1
20) 1
23) 1
25) 1+1
28) 1
29) 1
31) 1
33) 1
36) 1
41) 1
49) 1+1+1
50) 1+1
51) 1

1) 1
4) 3
6) 2
7) 2
8) 1
9) 1
10) 3
11) 1
12) 1+1+1
14) 1
15) 1+1+1
17) 1
18) 1
20) 1+1
21) 1+1+1
22) 1
23) 1
24) 1
28) 1+1+1
29) 1+1+1
32) 1
35) 1
38) 1
39) 1
40) 2+1+1+1

44) 1
45) 1+1+1
46) 1+1
48) 1
50) 1+1+1
51) 1
52) 1

32

46

Natural Museum : Count of Rhodian (AD)

Number of Drawer	Handles	Number of Drawer	Handles	Number of Drawer	Handles
1	53	24	46	47	50
2	50	25	45 + 1 (missing)	48	46
3	49	26	47	49	43
4	53 + 1 (missing)	27	44	50	50
5	49	28	46	51	48
6	50	29	50	52	45
7	55	30	47	53	18
8	49 + 1 (missing)	31	44	54	25
9	49	32	44	total	325
10	48	33	46	Unread in bottom drawers	
11	49	34	45	1) 137 + 1 (neck)	
12	53	35	47	2) 143	
13	49	36	52	3) 175	
14	55	37	46	4) 84	
15	43	38	45		
16	51	39	53	<u>Rhodian in cabinet</u>	
17	42	40	42	Read 2517	
18	47	41	47	Unread 539	
19	46	42	40	3056	
20	45	43	48		
21	51	44	40		
22	46	45	50		
23	46	46	49		
total	1128 + 2 (missing)	total	1064		

Note that there are some more Rhodian not yet read in drawers of separate lot, including those for Olympian (also a heap of illegible in corner)

6. 27. 55

10.X.59.

illegible Rhodian ✓

40
 90
 101
 1/ suppl. 126
 2) 133
 3) 147
 4) 67
 20
724

156
 133
 147
 67
 20

156
 133
 147
 67
 20

499

15.X.59

illegible Knidian ○
with boukranion

100

100

100

100

25

425

1

426

illegible Knidian ○
with forepart of lionHandles 100

illegible Knidian □

127 κυρτή κεφα

990 μάζαν κεφα

1117Knidian illeg ○
with boukranion KT 366A
without EM numbersHandles 133Να προσεδοῦν ἡ Διαβολὴ
Ροδίων

Handles 24 (15.X.59)

" 23 (16.X.59)

" 49~~28~~* (17.X.59)(* συμπληρωματικὰ κ' αὐτὰ πῶς εἶναι
ἐπὶ συντάρι 54 ἢ/στ 22 χέρια)

May 1949

Kv202ακα

No. 22

Απορίθμηση

Κατά	Κατά	Κατά	Αρχη	Αρχη	Αρχη	late kind.	ορίθμηση
□	○	◇	□	○	◇		
131	39	6	179	59	13	29	4560
142	57	6	172	122	17	45	561✓
82	60	11	201	123	16	58	551✓
100	57	8	390	110	14	51	730✓
98✓	52✓	6✓	353✓	49✓	17✓	47✓	622✓
94	55	6✓	181✓	55✓	16✓	33✓	440✓
96	61✓	6✓	145✓	115✓	7✓	72✓	502✓
115	54✓	3✓	200✓	16✓	22✓	60✓	440✓
93	68	5✓	165	75	26✓	60✓	492✓
179✓	51	10✓	207✓	144	19✓	77✓	584✓
75	36✓	4✓	194✓	158✓	13✓	64✓	544✓
155✓	94✓	20✓	192✓	204✓	51✓	60✓	786✓
75	86✓		266✓	106✓			638✓
			169✓	124✓			379✓
			160✓	149✓			309✓
			182✓	137✓			319✓
			200✓				200
			282✓				282
			178✓				178
			203✓				203
			199✓				199
			184✓				184
			209✓				209
			197✓				197
			178✓				178
			171✓				171
			158✓				158
			+ 3				
1485	961	91	55153	1746	231	656	10685
							230
							681
							1419
							946
							13961
							3741
							17702

Αντικείμενα - Α.Α.Σ.
Αντικείμενα (1949)

Τέσσερις
μικτά
από την
αρχή Α.
Total

Rhodion

only months

$\frac{1}{5}$

devices

2

Ροδιακά

Θαβιακά

16.24

A - I

K - X

Δέρ ε'χουν
του'μερο

Δέρ διαβα-
γονται ε'ινδα

Δέρ διαβα-
γονται ε'ινδα

Αριθμοί
ορίων

R

□

○

76

58

19

87

33

273 ✓

10

103

95

23

89

34

344 ✓

21

86

68

15

38

22

229 ✓

19

70

71

11

79

33

264 ✓

16

90

103

19

58

39

309 ✓

33

53

78

38

36

1419

38

36

868

230

31 May

Basile's left

measured by
Andreas

80

267

251

270

868

868

38

36

3

1

946

counting them
up - basile's

A

2361 PL, 11.6

467

AA2

2828

PL

AM

There have
now been
double fl.
They make
4 level
large-sized
basile's.

So 1 level
large basile's
is about
217.

(Found in the
3 hills
1 for water
not in by A.
by error.
Added 6
to list)

16.25

Ἀγρωστα

Κωινὰ Δρωπὰ

Λατινικά

68. ~~26~~

7

5

45

7

5

43

6

4

47

12

5

80

29

18

88

18

19

90

85

546 + 1 ^{up} _{only} _{A.}7956

ἤτοι συνολοῦ

681

28 May '45

There remain about 800 Rhodian handles
not counted, not put in their pile, because
 most of them have not been read.

We are having also a copy of Nilsson, and

9 of our baskets, for the present. 4 baskets
 are full of ^{import} Rhodian handles, 2 are about a quarter
 full of ^{my} handles numbers in pencil, and 3 are empty.

16.26

Kr. S. 1000

10687

27. VII. 49

Γενική Συνέλευσις τῶν μελῶν τῆς
 ἐν Ἀθῇναις Ἀρχαιολογικῆς Ἑταιρίας,
 2 Ιουλίου 1861, p. ~~20~~ 23, Koumanoudis,
 secretary of society, telling about 6- year's
 ἑφορία, clay objects found in excavations,
 illustrating private life in antiquity, -
 "ὁδὸς δὲ μνημονεύω, ὅτι εἰς τὰς
 ἐνεπιχράτους ἀμφορίων λαβὰς,
 τὰς ὑπερβαίνουσας ἤδη τὰς 3
 χιλιάδας, προσετέθη πρὸς ταῖς
 τῶν Κυθρίων, Ῥοδίων καὶ Θασίων
 ἔτι καὶ μία τῶν Κολοφωνέων,
 τῶν πρώτων γνωθῆσα."

Organization of future work in N. House

Must take up again some work on Kunze, control of identification, and selection for photos. (Vg, for the time).

Concurrently, A & I make progress on Phodina bractulata, when not busy.

And as I make systematic effort to identify published stamps, in Grundmann, Pondits, - pos. Damm.

N. Mus.

February 22, 1958

Dr. Christos Karouzos
Director,
National Archaeological Museum
Athens

Dear Dr. Karouzos:

In July 1954, by Mrs. Karouzos' permission, I photographed some jars believed to come from the Antikythera wreck.

I would like now to use one of these photographs, of which I enclose a print, in a publication of stamped handles found at ancient Nessana in Palestine, to show the shape of the whole Coan jar of the period of some of the Nessana fragments.

May I have your permission to publish this photograph?

Yours sincerely,

Virginia Grace

Taken to museum by HZ,
attending S.K.'s lecture at 11:00 22.11.

HZ said S.K. immediately said permission could be given.

N. MUS

Report for the YEAR BOOK on the project supported
by Grant No. 1544 (\$ 1000.) from the Penrose Fund

The Society's grant is making possible a project essential to the comprehensive study, which the grantee is preparing, of ancient Greek standard wine containers. Important series of these two-handled earthenware jars had indications of the place of origin and the date stamped on their handles, so that they provide valuable evidence for one of the principal branches of ancient commerce. The stamps were apparently endorsements of capacity, and contain the names, and sometimes the titles, of various responsible persons; hence they are a source of information on the administration of the issuing state. Finally, the stamped fragments, to the increasing degree that their chronology is being established, serve to date the many and widespread excavation deposits in which they are found.

The specific project which has been assisted by the grant is the classification and recording of the nearly 18,000 stamped handles in the National Museum, Athens, in particular the Knidian, those, that is, from wine jars made in Hellenistic times in Knidos, a port city of Asia Minor opposite the island of Rhodes, which must have been the outlet for a wine-growing hinterland. The Knidian form by far the most numerous class in the National Museum collection; totalling nearly 14,000, the

National Museum Knidian are also the largest collection of their class in existence. Taken together with the second largest group of Knidian, those found in the excavations of the Athenian Agora, they show that the stamped Knidian jar was the common wine container in Athens in the Hellenistic period. Of this, which is in some ways the most important of the stamped series, no definitive study could be published without taking into account the collection in the National Museum.

Toward the ordering of the mass of data to be obtained from this huge collection, a numbered and alphabetically arranged repertory of Knidian stamp types was prepared in October, 1952, the chief basis of which was formed by finds in the Athenian Agora and in Delos: the number of distinct types came to just over 1800. Procedure with Knidian at the National Museum, which began early in November, 1952, has been as follows:

- 1) Identification and numbering of handles by stamp types
- 2) Photography of new and corrected types, done currently with the identification
- 3) Arranging of handles for storage in order of type numbers
- 4) Checking of identifications by groups of duplicates, and labelling of drawers in which the handles are stored
- 5) Photography of superior examples, for better illustration of the repertory
- 6) Numbering of examples of the types
- 7) Adding to the copy of the repertory a tally of examples, and notes from the study of assembled groups, e.g. on secondary stamps, on small handles indicating fractional containers, on dates indicated by fabric, etc.

This program has been completed to the following extent: About 10,000 Knidian handles have been classified, numbered, stored in order, their identification checked against photographs of the types, and the drawers labelled. Of the rest, a good part have stamps too worn and dim for precise identification; others will be identified after further study.

(Space for additional examples has been left in the drawers.)

As to photography, all new and corrected types have been photographed, and somewhat over half the work has been done which will be desirable for the illustration of superior examples. Rather over a quarter of the classified handles have received their example numbers; this work will be continued by the assistant needed to fetch and carry for the persons who will proceed with the photography and the study of assembled groups. In the latter study, a beginning has been made, enough to give an idea of the harvest to come.

25.11.54
"summing"
this is done
for estimate
of 19 rolls
still to photo
(see on list
of items to be
photo.)
which makes
to 18 rolls
listed in the
accounting -

Some results of the investigation may be cited now: about 180 new stamp types have been identified, and about 150 types which were previously incompletely known are now corrected or restored. Further bulletins may be published when the present project is complete. The results of the investigation as a whole will be incorporated with information derived from the grantee's study of the collections from the excavations in Delos and the Athenian Agora, to make the Knidian volume of a corpus of wine jar stamps. This volume will be published

by the American School of Classical Studies, Athens, as part of the final publication of the results of the excavations of the Athenian Agora.

The Society's grant has provided a large part of the costs of photography and manual assistance needed for the National Museum project. Most important, however, is its gift of the means of maintaining a classified arrangement of some 14,000 specimens, the drawer storage which not only renders individual stamps accessible for verification, but also enables one to make comparisons of whole series, facilitates in many ways every stage of the present investigation, and will continue to open the material to further studies, for instance in the related field of numismatics.

Virginia Grace

American School of Classical
Studies

Athens, Greece

December 12, 1953

Athens, Greece
December 12, 1953

DISBURSEMENT OF GRANT No. 1544 FROM THE PENROSE FUND

For specially printed duplicate pads, used in establishing
a repertory and in tallying of examples . . . \$ 15.

For drawers in which to establish classified storage
of specimens:

1) Frame containing 72 drawers, made before the
devaluation of the drachma: 2,322,500 drachmas, or 155.

2) Frames containing a total of 360 drawers, made
after devaluation: 13,553,100 drachmas, or . . . 452.

For manual and clerical assistance (post-devaluation). . . 150.

For transportation of personnel and tools of research
back and forth from the Museum during nine months
(post-devaluation) estimated . . . 50.

For photographic costs:

1) One 100-foot roll of 35 mm. film, ca. . . . 7.

2) Prints, including enlargements, from 18 rolls of
ca. 32 frames (post-devaluation) . . . 123.

Remainder, to be used for continued photographic costs . . . 48.

\$1000.

Comment on disbursement

The admirable and unusual promptness with which the Society's grant was made and announced should have made possible an early start on the project. However, problems were presented by the decision to award one-half the sum requested, causing a little delay in the undertaking, which is now slightly less advanced than had been expected. This delay had the fortunate result of putting most of the expenditure after April 10, 1953, when the drachma was devalued from 15,000 to 30,000 to the dollar. The devaluation did not of course really double the value of the grant, because drachma prices for some commodities (such as lumber) rose quickly to some extent. But in combination with help from the Agora Excavations, it has made the grant almost equal in value to that requested; the help has included the developing gratis in the Agora darkroom of most of the films, and the construction of the drawers and frames in the Agora workshop, at a reduction in cost due partly to the personal attention and effort of the master carpenter.

Virginia Grace

Notes in Epige Museum

Here this morning I see E. Kapaδίου about the setting up of the cabinet for the bundles - first the one now available out of my own funds, 4 columns for Rhodii and miscell. from first lot, and possibly I will take the same categories from the 2nd lot (fig-tree apollute) - and ultimately the large one for which application is now being made for funds; and 2.) about getting out, for incorporation into the rest, of the fig-tree bundles. Desirable to get them out for sorting as soon as possible, a.) when weather is good, and b.) while Benadisi is here to help sort.

Mr ~~Benadisi~~ ^(also one in the other half of the cabinet) is engaged in looking through the difficult Rhodii to see if any can be read and added to the alphabetical series; not too much stress is to be put on reading them, they are to be counted and put in double-space drawers - got out of the way. Looking about in the "office", I find an Argona tray with Rhodii in, on special study I think of XH ones, and to be added also to the alpha. series. This series has been laid out in the drawers without spaces except for missing bundles; we are not troubling to get it all straight at present, i.e. all in one series, because that can be done in the move to the large cabinet, one hopes. Numbers in drawers will indicate new series.

Ten Olympic cradles, still lying about, must be put in order. I think it will be best to put them in drawers by themselves, since they are the only part of the collection actually known to be from Athens. Will take 6+ drawers?

ΑΠΟΔΕΙΞΙΣ ΔΙΑ ΔΡΑΧ.

50,000

τῆς Δ^{ος} Grace

ΕΛΑΒΟΝ ὁ ὑπογεγραμμένος παρὰ τοῦ Γραφείου Ἀνασκαφῶν
 τῆς ἐν Ἀθήναις Ἀμερικανικῆς Σχολῆς Κλασικῶν Σπουδῶν
 τὰς ἄνω δραχμὰς Πεντηκοντα Χιλιάδων
 διὰ ἔργον τῆς ἐκτεταταμένης ἐν ἑμοῦ ἐργασί-
 ας, ἐν τῷ Ἐθνικῷ Μουσείῳ Ἀθηνῶν

Ἐν Ἀθήναις τῇ 13 Μαΐου 1949

Ο ΛΑΒΩΝ

Πορτομέρης
 Γιάννης Πορτομέρης

ΑΠΟΔΕΙΞΙΣ ΔΙΑ ΔΡΑΧ.

50,000

ΕΛΑΒΟΝ ὁ ὑπογεγραμμένος παρὰ ^{τῆς Δ^{ος} Grace} τοῦ Γραφείου Ἀνασκαφῶν
 τῆς ἐν Ἀθήναις Ἀμερικανικῆς Σχολῆς Κλασικῶν Σπουδῶν
 τὰς ἄνω δραχμὰς ΠΕΝΤΗΚΟΝΤΑ ΧΙΛΙΑΔΑΣ
 διὰ ἔναντι τῆς ἐκτελουμένης ὑπὸ ἐμοῦ ἐργα-
 σίας ἐν τῷ Ἐθνικῷ Μουσείῳ Ἀθηνῶν

Ἐν Ἀθήναις τῇ 15/ Μαΐου 1949

Ο ΛΑΒΩΝ

Γεώργιος Θεοτοκός

VIRGINIA GRACE
AMERICAN SCHOOL OF CLASSICAL STUDIES
ATHENS, GREECE

Απόδεδωγμένα δρχμὴν ἑκατὰ χιλιάδων

Ἐξάβα ἐπὶ τῇ δωσυνίδᾳ Virginia Grace

ὧς ἄνω ποσὶ τῇ δρχμὴν ἑκατὰ χιλιάδων < 100.000 >
διὰ χειρὸς καθεστῶτος ἀρχαίου ἔργου < λαβὴ
ἀμεσοῦ > ἐν τῇ Ἑλληνικῇ Μουσίῳ.

Ἀθῆναι 8^η Νογίου 1949

ὁ Λαβὴν
Ἡγουμένης.
Ἀμνὸν

VIRGINIA GRACE
AMERICAN SCHOOL OF CLASSICAL STUDIES
ATHENS, GREECE

Ἀπόδειξις «70,000»

Ὁ κατωθὶ ὑπογεγραμμένος Ἀλέξανδρος Σωτὴρ
ἔλαβεν ἀπὸ τῆς Δ^{ας} Grace τὸ ὡς ὀνόματι ὑποστ.
ἑβδομήκοντα χιλιάδων δραχμῶν, ἕναρτε τῇ αὐτ.
ἐμοῦ ἐκτελούμενης ἐργασίας, ἐν τῷ Ἐθνικῷ Μουσείῳ
Ἀθηνῶν.

Ἐν Ἀθῆναις τῇ 24 Μαΐου 1949

ὁ Ἰαβάρ
Ἰαβάρ

VIRGINIA GRACE
AMERICAN SCHOOL OF CLASSICAL STUDIES
ATHENS, GREECE

Ἀπόδειξις <70,000>

Ὁ κατωτέρω ὑπογεγραμμένος Ἰωάννης Πολυμέρης
ἔλαβεν ἀπὸ τῆς Δ^{αν} Grace τὸ ὡς ἂν ὡς εἰς
ἐβδομήκοντα Χιλιάδων δραχμῶν ἔναντι τῇ ἐπὶ
ἐμοῦ ἐκτελούμενῃ ἐργασίᾳ ἐν τῷ Ἐθνικῷ Μουσεί-
ῳ Ἀθηνῶν

Ἐν Ἀθήναις τῇ 27 Μαΐου 1949

ὁ Λαβὼν
Ἰ. Πολυμέρης.

29. IV. 49

For posts for sorting out Rhodian at National Museum,
taking roughly two of our Rhodian drawers
per post:

ΡΟΔΙΑΚΑ ①

'Αγ —

N. 4 - 21

ΡΟΔΙΑΚΑ ②

Δαμοκράτης

- Δίσκος

N. 165 - 181

ΡΟΔΙΑΚΑ ③

'Αθ -

'Αλ -

N. 22 - 34

ΡΟΔΙΑΚΑ ④

Δορκυλίδας

- Ζήνων

N. 183 - 221

ΡΟΔΙΑΚΑ ⑤

'Ακυστίδης

- 'Αρωτι -

N. 35 - 87

ΡΟΔΙΑΚΑ ⑥

H - Θ

N. 223 - 244

ΡΟΔΙΑΚΑ ⑦

'Αρωτο -

- 'Αρωτωνίδας

N. 94 - 116

ΡΟΔΙΑΚΑ ⑧

I - Κδευ -

N. 246 - 276

ΡΟΔΙΑΚΑ ⑨

'Αρκ - Δαμοκράτης

N. 117 - 165, 6.

2.

24.02

ΡΟΔΙΑΚΑ (20)

μέ τμήματα μόνο
N. 783-788

ΡΟΔΙΑΚΑ (10)

Κλεώνυμος

- Μένανδρος

N. 277-302

ΡΟΔΙΑΚΑ (15)

Πελοίστρατος

- Στράτων

N. 353-378

ΡΟΔΙΑΚΑ (11)

Μενέδαμος

- Μυτίων

N. 303-320

ΡΟΔΙΑΚΑ (16)

Σύμμαχος

- Σωχάρης

N. 379-396

ΡΟΔΙΑΚΑ (12)

Νάvis -

Ξενοστράτος

N. 321-337

ΡΟΔΙΑΚΑ (17)

Τεσσαγόρας

- Φιδόδαμος

N. 398-424

ΡΟΔΙΑΚΑ (13)

Ξενοφάνης -

Πάτρων

N. 340-350

ΡΟΔΙΑΚΑ (18)

Φιλοκράτης

- Χαρμοκλῆς

N. 425-436

ΡΟΔΙΑΚΑ (14)

Παυσανίας

N. 351-352

ΡΟΔΙΑΚΑ (19)

μέ μύθους μόνοι

N. 437-441

December 11, 1946

Dear Semni,

Thank you so much for your letter of 5 November, and for the beautiful drawings, which arrived today. I am greatly obliged to the artist, Mr. Heliopoulos. I think I have never seen such fine drawings of stamps. I am thinking of having them framed to decorate my office.

But please don't have him do any more, at least until we can make a careful selection. You know there are more than 100,000 stamped handles collected here and there. He should not waste his talents on things that come in many copies, and that need a specialist to interpret/ poor examples.

Ellie Papadimitriou expects to sail for Greece in about a week. I have read translations of some of her recent work, and am impressed with it, especially what I have seen of a long poem. I hope very much that it will be published.

Thank you for what you say about my brother. He would be pleased at your memory of him. His visits to Greece were the turning points of his life.

My greetings to you both for Christmas and the New Year. I hope to see you before too long.

Ἀθήνα, 5 Νοεμβρίου 1946

Ἀγαπητή Virginia

Δέν καταλαβαίνω πῶς δέν κατώρθωσα τόσον καιρό νά ἀπαντήσω
στό γράμμα σου. Εἴχαμε ὅμως τόση δουλειά στό Μουσεῖο, πού τό μυαλό μας
βρισκόταν ἐκεῖ. Ἐξ ἄλλου τά ἀγγεῖα εἶναι ἀκόμη φυλαγμένα μέσα στίς
κάσες καί δέν μπορῶ νά βρῶ αὐτά πού ζητεῖς. Μόνο λίγα χερούλια ἀπό
ἀμφορεῖς βρῆκα καί σοῦ στέλνω (μέ τό τακτικό ταχυδρομεῖο) τά σχέδια
πού ἔκανε γιά σένα ὁ ζωγράφος τοῦ Μουσείου κ. Ἀλέκος Παπαηλιόπουλος.
Ἄν θέλεις τοῦ γράφεις δυό λόγια εὐχαριστίας. Εἶναι ὅπως βλέπεις μεγα-
λωμένα *du* φορές.

Λυπηθήκαμε πολύ γιά τόν θάνατον τοῦ συμπαθεστάτου ἀδελφοῦ σου.

Ἔχεις καί ἀπό τοὺς δυό μας χαιρετίσματα, καθὼς καί ἀπό τήν E.
Haspels πού βρίσκεται ἐδῶ γιά λίγες ἡμέρες.

Γειά σου

Ξένη Κασίτη

March 5, 1946

Dear Semni,

It is good to hear from Rodney Young that you are both well and in the museum. I was in the Middle East until after the liberation of Greece, but was unable to get an assignment there, or even permission for a short visit before I left Cairo January 15, 1945. Since then, like others, I have been reading all the news I could, and trying to understand what was happening.

When I got back to this country, I was offered the opportunity to work on my research on stamped amphoras here at this institute (on the suggestion of Professor Meritt). During the past two months I have been working out a scheme to make a corpus of amphora stamp types a practical possibility. The Institute is willing to encourage the scheme to the extent of allowing me some further time for associated research. I hope that when the plan is submitted to a further audience, funds may be made available to carry it out as a whole.

If we are successful in this, do you think that the handles in the National Museum might be included? I feel sure that many must have been added to the collection since the publication of Dumont's Inscriptions Céramiques (1871). I should like to know also the situation with regard to finds from German excavations, like the handles from the Kerameikos, or those from Samos (there seemed to be about a thousand in the workrooms at the Heraion in 1939).

If there is someone other than yourself to whom I should address formal requests for permission to study and publish these objects, I should be grateful for instructions.

(personal note at the end)

(see Guggenheim
report)



26 b



Ans. 15 Dec 47

NAT'L MUS.

27.01

AGORA EXCAVATIONS
AMERICAN SCHOOL OF CLASSICAL STUDIES
ATHENS, GREECE



December 8, 1947

Dear V,

although I can't put my
finger on it, I do seem to
remember a letter in which
you asked for a view of the
pile of SAH's in the EM.
Here are the first efforts -
most unworthy. I will try
again some day with different
lighting or exposure or something.

Ask Homer to show you the
Agora report for November which
has some notes on stamped karynos
handles. I will also forward some
notes on two Rhodian pairs.

Among this year's finds - not noted
in the reports, I think - was another
Mendacian handle, from a late
fifth century BC (I think) well.

Yours,
J.



27.02b

Athen

Epigraphical Museum

1941



27.03b

Athena
Epigraphical Museum
1947

Athens, December 27, 1946.

Dear V,

I was down at the Epigraphical Museum this morning and I measured up that bin of bin-ef handles that you asked about. It is about 2.00 m. long by 1.50m. wide by roughly 1.20 m. deep. Multiplied out this gives 3.6 cubic meters. I noticed, however, that there were many loom weights, and some tiles, brazier handles and even lamps mixed in, so that I imagine that this figure would have to be reduced by say one third or one fourth, leaving somewhere around two and a half cubic meters for the handles. Using your Alexandrian figure of 3300 per cubic meter we arrive at about 8000 as the number in the E.M. bin, which is considerably less than you and Mr. Mitsos got by closing your eyes and thinking hard! (Once when I took 100 whole ostraka and put them in a tin and measured the space they occupied and then multiplied out, I got about 8000 to a cubic meter, but they are rather smaller, and especially thinner and flatter than the handles)

I have no idea how many handles there may be at the Kerameikos or whether it is possible to find out, but I hope to be going down there one day with Threpsiades who is looking something up for Ben Meritt and I will try to find out.

A bulletin on Agora handle finds of the last season would not make very exciting reading I am afraid. There were only slightly over 100 handles found and no really good well or cistern groups. The only tid-bit that Rodney and I can think of is the one stamped ATTANOY of which I enclose the card and a photo.

I think of you these days in Rochester trying to promote the Corpus ansarum and I wish I were there to do a little lobbying for you. It would be a most useful piece of work, and if it is not done by you now I cant imagine when or by whom it would be done.

Happy New Year,

Yours,

J (for Gene)

See LAGYNOL
fold

3 handles
This was measured
longhand, from
middle of bin
probably from
in which was
August 1947

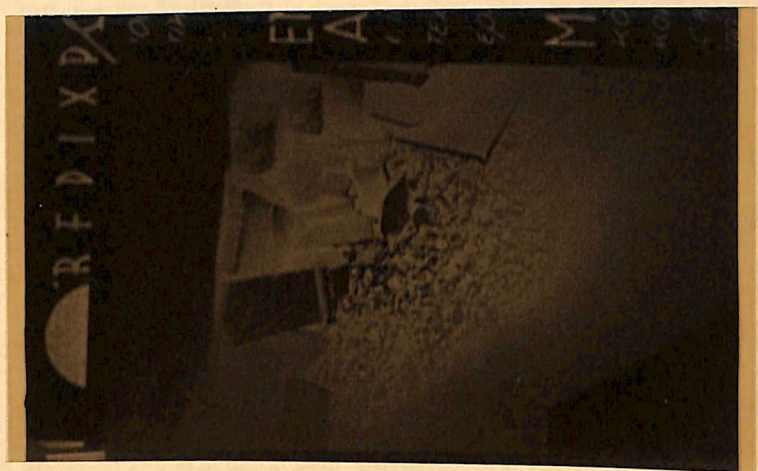
VIRGINIA GRACE
AMERICAN SCHOOL OF CLASSICAL STUDIES
ATHENS, GREECE

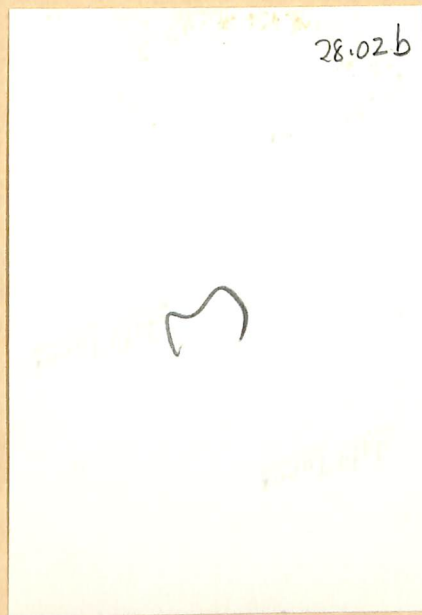
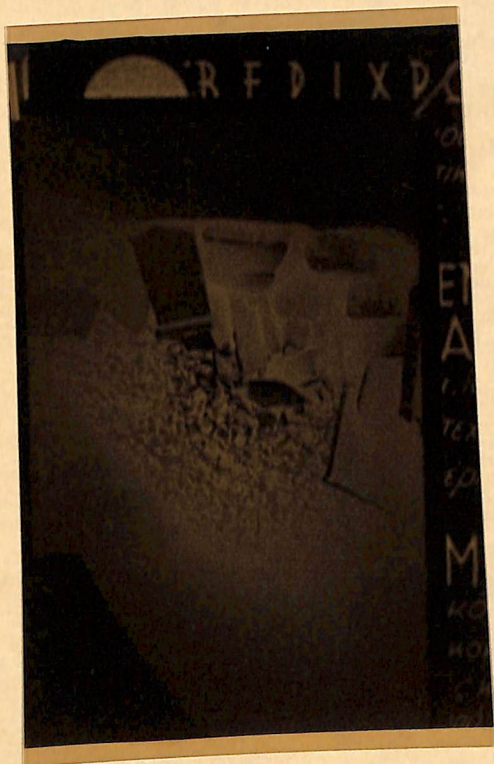
28.01

Wpa 1

6 Copies

Copy of E V's
print of leaf
in Epigraph. Museum





December 11, 1946

Dear Gene:

I don't know to how many people I am obligated for those fine and very prompt pictures of Agora stamps. I have written Alison my gratitude. Will you please convey to her my apologies for misspelling her name, a horrid thing to do. And thank you very much your own help about the pictures.

There is something I'd like to know whenever it may be convenient for you to go over to the Epigraphical Museum. I'd like a rough estimate as to how many handles are in that bin or heap or whatever it is. An equivalent figured out in the Alexandria museum by counting the contents of a measured case ^{days} 3,300 per cubic meter, which is very approximate of course. Mr. Mitsos and I by closing our eyes and thinking hard have made a guess that his collection is between 25,000 and 30,000. I'd like to know whether that seems probable when one goes and looks at them. This is a kind of information which I can't seem to get from Semni..

Further news for which I should be grateful: where and roughly how many are the handles found in the Kerameikos? if such information is available without too much research. Also, a bulletin on Agora handle finds of the last season.

My piece for the Shear number was on "Standard Pottery Containers of the Ancient Greek World", and was designed to be comprehensible in a broad way, as well as bringing things up to date generally. The next, and perhaps last, opus is planned to present "quel necessario raggruppamento di eponimi e fabbricanti, senza del quale, l'auspicato da piu studiosi Corpus ansarum potrebbe non esser altro se non un'immatura e faticosa elaborazione di materiale che deve attendere ancora nuove scoperte per poter essere organicamente vagliato e ordinato." Amen. I am going to the Christmas meetings, largely to promote the corpus ansarum, and thence to Toronto (the meetings being in Rochester) to stay with an aunt and see the Thompsons and others (Wallaces).

At a local lecture meeting two nights ago, Dick Stilwell told me that George Elderkin had just informed him that Homer is to take Miss Goldman's place here at the Institute. This is the extent of my knowledge on the subject.. If it is definite, you have probably heard it already yourself.

My love to Joan. Ask her if there is something I can have sent to her. Merry Christmas to all of you.

March 2, 1956

Dr. Bernard V. Bothmer
 American Research Center in Egypt
 Isis Building, Sharia el Walda
 Garden City, Cairo

Dear Dr. Bothmer:

Your letter of February 10 was a bit slow in reaching me - I see the Athens cancellation is February 19. About this time I had a slight accident myself, for which I am at present under house arrest, but have managed so far to keep out of the hospital. I'm so sorry to hear of your bad luck, and hope you are now fully recovered.

I don't know if you know the setup of the National Museum here. The director is Dr. Christos Karouzos, the assistant director his wife. Mr. Buffides is the Curator of the Egyptian collection. In the matter of photographs needed for somebody I know in England, he was as helpful as possible. But he has no access to his own material, which as you know is still in cases. Mrs. Karouzou came up to see me one day, having heard that I was laid up (I live in our School building, and she had been working in our library). I mentioned that I had seen you in Egypt, and asked if she had heard anything about your need to work on material in the Museum's Egyptian collection. I found this to be a distinctly touchy subject, and couldn't get very far. They are under a great deal of pressure from all kinds of archaeologists wanting to work on their stuff, and it is natural that the Egyptian collection would be the last thing they could give priority to.

I don't know to whom Miss Richter spoke, but Mrs. Karouzou did not seem to know your project. I did not show her your letter, because I was convinced by Lucy Talcott's opinion that people prefer a direct approach. Your best chance would probably be to write to the Director (Dr. Christos Karouzos, National Museum of Archaeology, Patissia Boulevard, Athens). Lucy T. thinks that the idea of their stuff being properly represented in a corpus would have an appeal. You should bear in mind that you would be asking a lot, opening cases in a museum seems to involve lots more than carpenters, and they clearly don't want to do it until they are ready to exhibit, which would not be possible at present, because there is no room, the museum being still under reconstruction following damage in the civil war. The rooms they have set up are of course exceedingly good, I mean the exhibition so far as it has got.

I hope that this and other attractions will induce you and Mrs. Bothmer to call our way even if you cannot do quite what

You would like to do while here.
 Should I return your letter which has the list?
 Yours sincerely,

AMERICAN RESEARCH CENTER IN EGYPT

INCORPORATED

479, HUNTINGTON AVENUE
BOSTON 15, MASSACHUSETTS

President

EDWARD W. FORBES
Fogg Art Museum
Cambridge 38, Mass.

Vice-Presidents

E. E. CALVERLEY
DOWN DUNHAM
JOHN A. WILSON

Treasurer

CARL T. KELLER
80 Federal Street
Boston 10, Mass.

Membership Secretary

RICHARD A. PARKER
Brown University
Providence 12, R.I.

Executive Secretary

ASHTON SANBORN
147 Brattle Street
Cambridge 38, Mass.

BERNARD V. BOTHMER, Director

WILLIAM K. SIMPSON, Research Associate

Isis Building
Sharia el Walda
Garden City
Cairo

TELEPHONE: 27076 - CAIRO

February 10, 1955

Miss Virginia Grace
c/o American School of Classical Studies
Soudou Street
Athens, Greece

In the beginning of the year I had an accident and have just got out of the hospital -- this merely by way of explaining why I did not write to you before.

My predicament with regard to the Egyptian pieces in the National Museum is the following: I know most of them from bad photographs, and the texts of the majority were published in the beginning of the century. Therefore they are often cited but the publication is entirely insufficient. As I mentioned to you I am working on a corpus of Late Egyptian sculpture (fully endorsed by the XXIIIrd International Congress of Orientalists, Cambridge, England, 1954) in collaboration with two other Egyptologists, and it so happens that some of the key pieces are in Athens, the only collection this side of the Iron Curtain which has remained inaccessible to me for all these years.

At various times, friends and colleagues have approached the powers to be in my behalf, and Miss Richter wrote me after her visit to Athens last February that she had been more or less assured that the pieces could be unpacked for me this year. Of course, I am not too hopeful, but since I have to return to the U.S. this summer I would like to make one more try. It may take years before I can come out again as far east as Greece. Therefore I should be very grateful to you if you could explore the situation. Of course, I shall be glad to defray the cost incurred in moving the crates, unpacking and repacking, provided that I shall be permitted to fully record the pieces, archaeologically, epigraphically and photographically, for study purposes (not for publication). I might add that I have worked in over 80 museums thus far, recording Late Egyptian sculpture, and have never been denied permission to do this work as fully as is necessary for an international Corpus.

I append a list of the pieces which are known to me from the literature and other sources. There may be more, but without having had access to the collection it is impossible at the present time to give a complete list. I also do not know the registration numbers of all of them.

I shall greatly appreciate whatever you can find out to help me in this matter. My wife joins me in sending you our best regards and all good wishes.

Sincerely yours,

Bernard Bothmer

Bernard V. Bothmer

ATHENS, National Museum

Late Egyptian Sculpture (stone)

- (1) no. Female draped statue, granite, holding sistrum (so-called priestess of Isis)
- (2) no. Striding man, wide wig, eyes formerly inlaid, emblematic staves in both fists, broken off at knee level
- (3) no. Block statue ('statue-cube') with statuette of Osiris between feet; 3 columns of inscriptions on back pillar
- (4) no. 107 Standing osiriphoros, green schist, inscribed for Psamtik-sa-neith. Height 62 cm.
- (5) no. A112 Bearded funerary deity in long robe, seated, granite, inscribed for Mentuemhat. Height 48 cm.
- (6) no. 917 Block statue, dark green schist, height 43 cm.
- (7) no. 922 Kneeling naophoros, inscribed round naos and on back pillar, height 41 cm.
- (8) no. 932 Kneeling naophoros with demotic inscriptions on base of naos and statue base, height 36 cm.
- (9) no. 1267 Kneeling male figure, hands resting on thighs, inscribed for Ankh-ba-Djedet, black granite, height 34 cm.
- (10) no. 1589 Black granite statuette fragment inscribed for Nesmin and ~~MMMMMMMM~~ Mentuemhat
- (11) no. 1983 Grey granite block statue of Hor-wedja son of Harwa, 4 cols. of inscr. on front of ~~MMMMMM~~ garment, 3 cols. on back pillar and 1 line round base. Height 45 cm.
- (12) no. 2009 Limestone statue of man with bag wig holding supportless naos and wearing long coat, legs and feet missing. Coat and back pillar inscribed. ~~Ø~~ Height 47 cm.

30.04

AMERICAN RESEARCH CENTER IN EGYPT
INCORPORATED

479, HUNTINGTON AVENUE
BOSTON 15, MASSACHUSETTS

President

EDWARD W. FORBES
Fogg Art Museum
Cambridge 38, Mass.

Vice-Presidents

E. E. CALVERLEY
DOWN DUNHAM
JOHN A. WILSON

Treasurer

CARL T. KELLER
80 Federal Street
Boston 10, Mass.

Membership Secretary

RICHARD A. PARKER
Brown University
Providence 12, R.I.

Executive Secretary

ASHTON SANBORN
147 Brattle Street
Cambridge 38, Mass.

BERNARD V. BOTHMER, Director

WILLIAM K. SIMPSON, Research Associate

Isis Building
Sharia el Walda
Garden City
Cairo

TELEPHONE: 27076 - CAIRO

Cairo

February 16, 1956

Dear Miss Grace:

This is merely a PS to my letter of February 10.
In coming to the end of the page I left off the most important
piece in Athens, the head of Ptol. VI Philometor, published in
AM 12 (1887), pp. 212-222, pl. 7-8. Please be so kind to add
it to the list.

With best regards,

Sincerely yours,

Bernard V. Bothmer
Bernard V. Bothmer

ATHENS: NATIONAL MUSEUM
GENERAL AND MISCELLANEOUS

78