

VRG \_ Folder \_ 0085



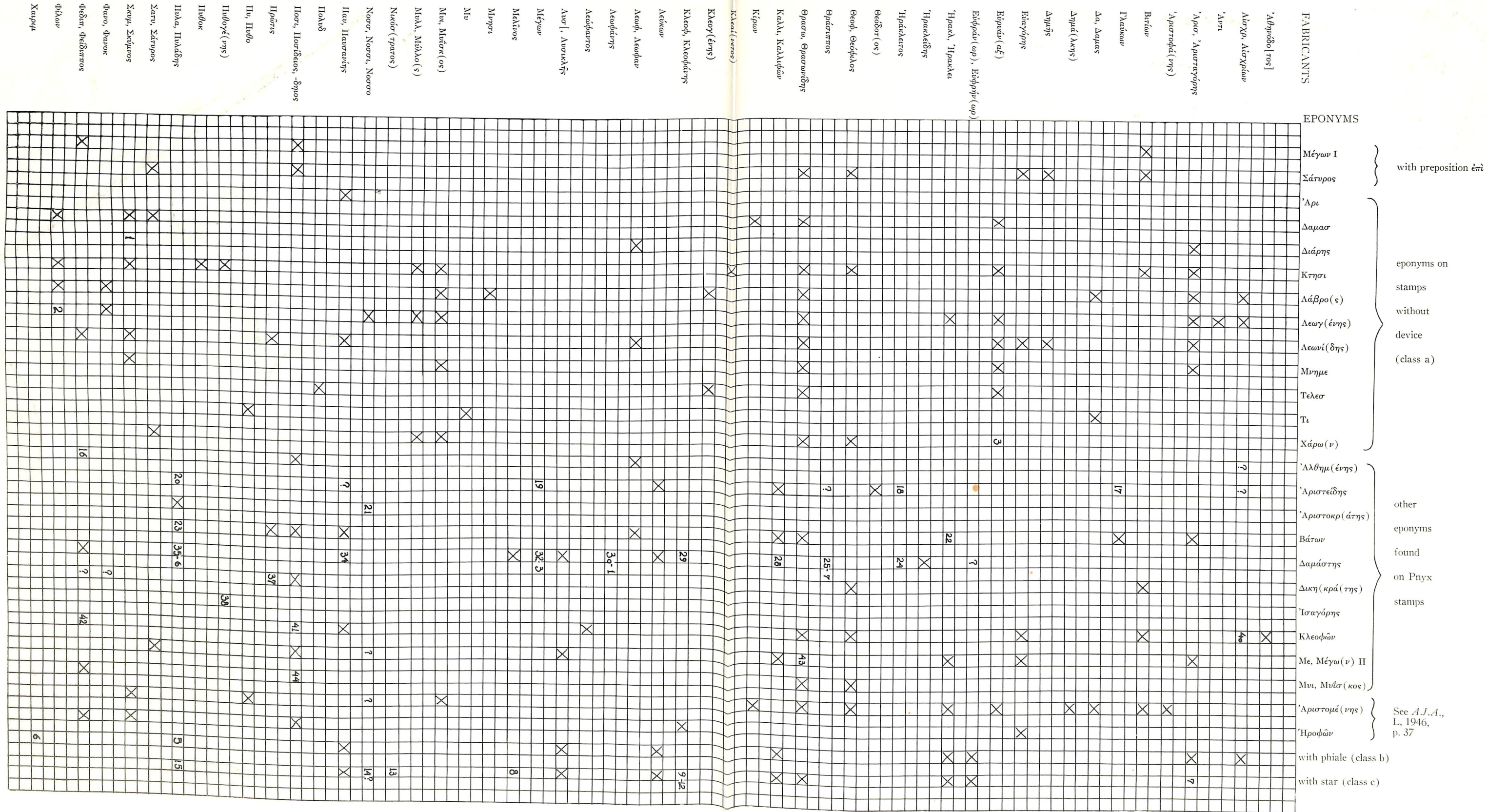
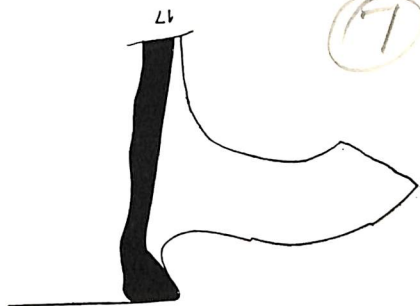
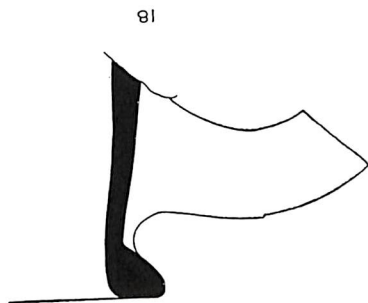
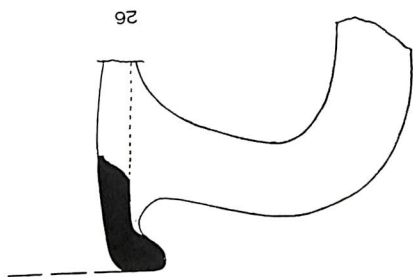
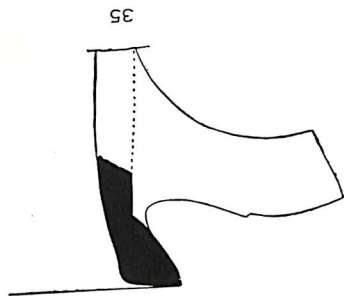
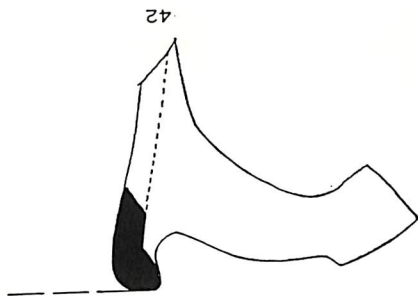
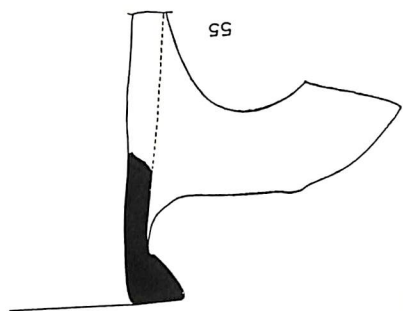


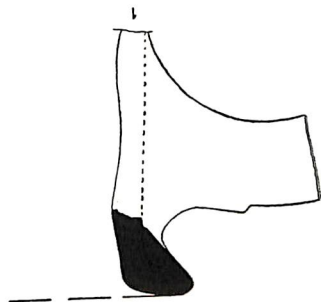
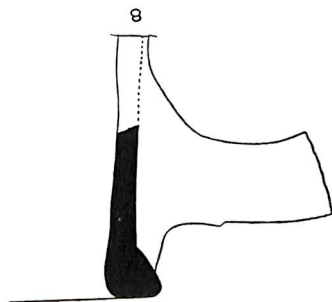
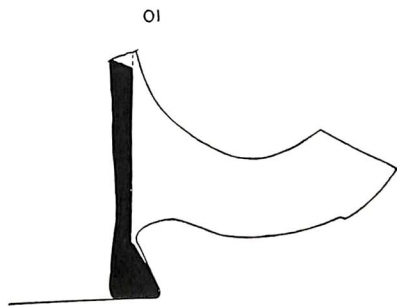
FIG. 6. Diagram to show partial sorting of early Thasian names into eponyms (at right) and fabricants (across top). The existence of a stamp type combining names from the two series is shown by a cross, or by a catalogue number if the type occurs in this catalogue.

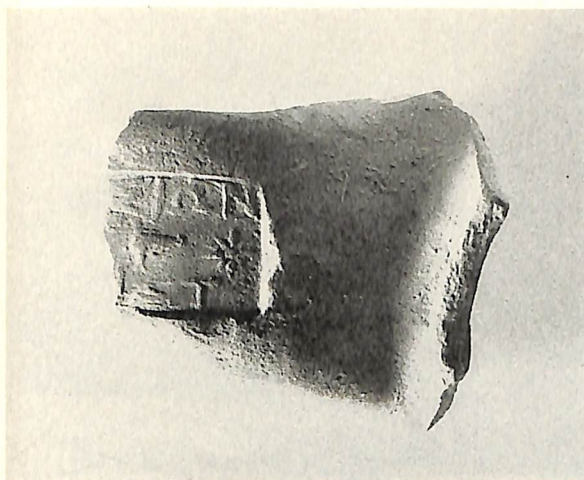


Stepuria <sup>2</sup>  
 Supplement X  
 Pnyx.

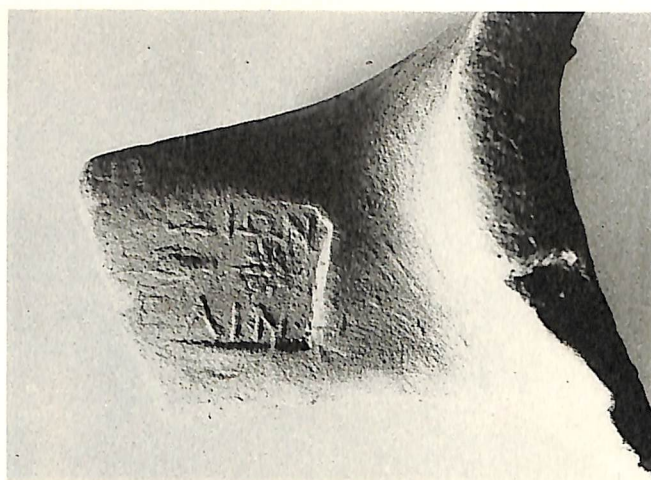


(7)





7



8



9



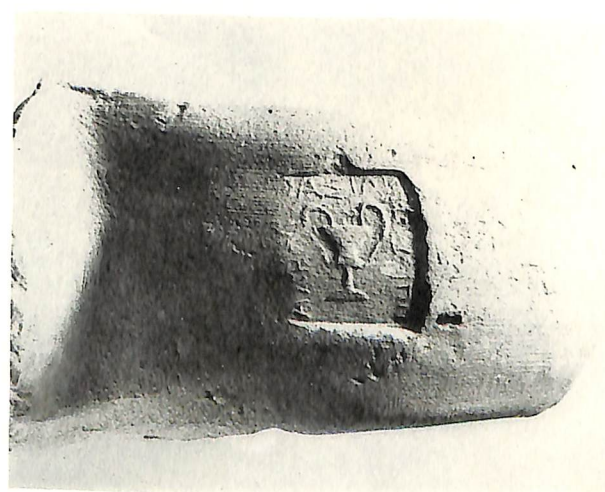
10



12



15

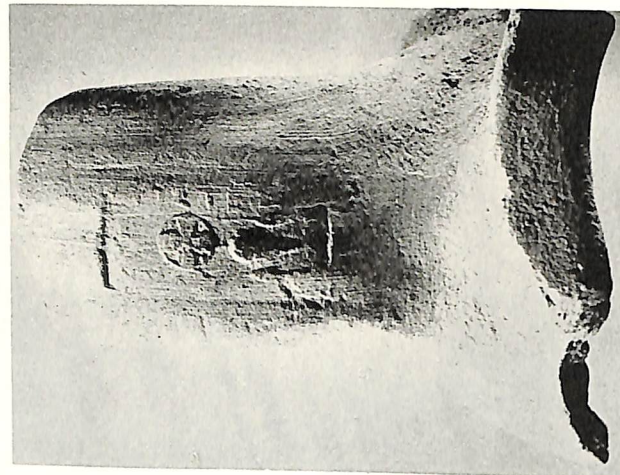


16

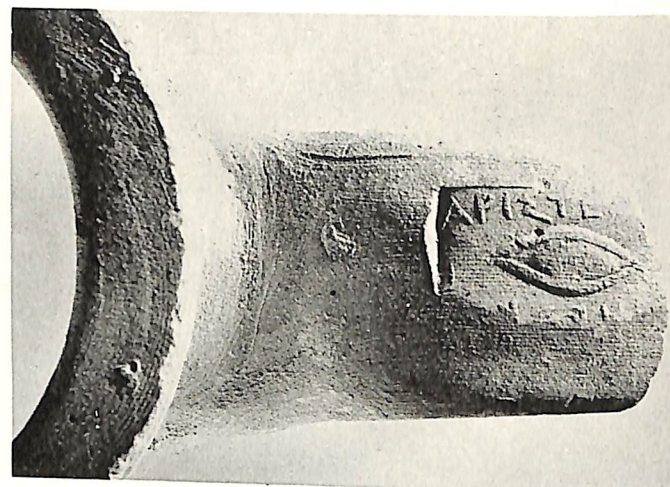
Thasian I: Classes c (7-15), and d, term of 'Αλθημένης (16). Late 5th, early 4th centuries B. C.

STAMPED WINE JAR FRAGMENTS





17



18



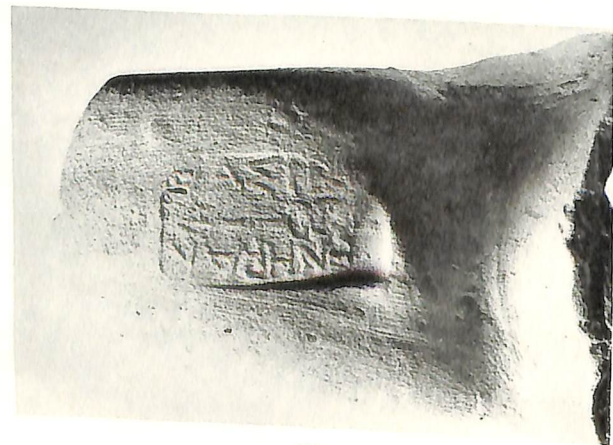
19



20



21



22

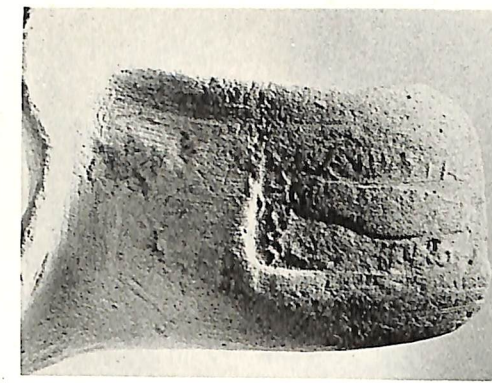


23

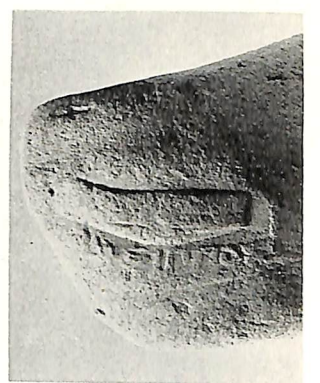
Thasian I: Class d, terms of Ἀριστείδης (17-20), Ἀριστοκράτης (21), and Βάτων (22-23). Late 5th, early 4th centuries B. C.  
STAMPED WINE JAR FRAGMENTS



24



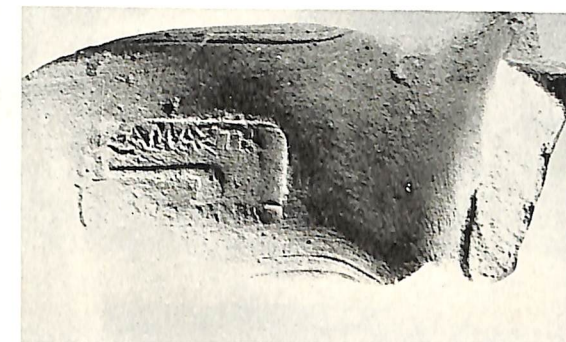
25



27



28



29



30



31



32



33



34



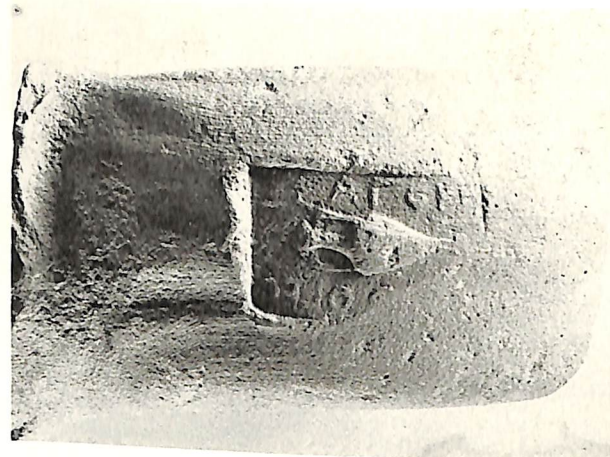
35

Thasian I: Class d, term of Δαμόστης. Late 5th or early 4th century B. C.  
STAMPED WINE JAR FRAGMENTS





37



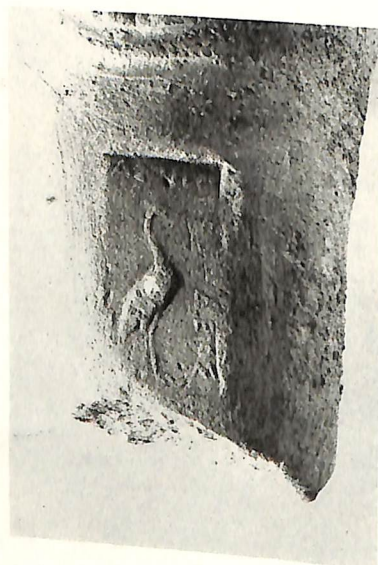
38



39



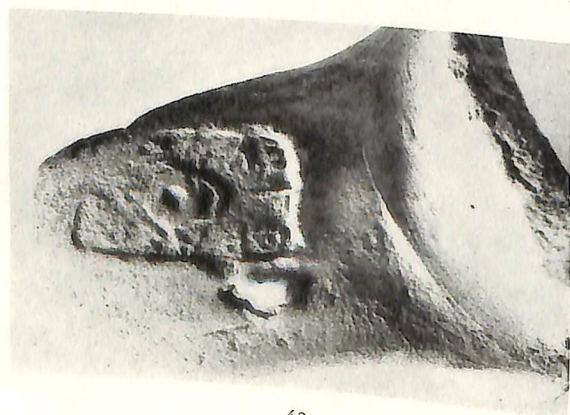
40



41



42



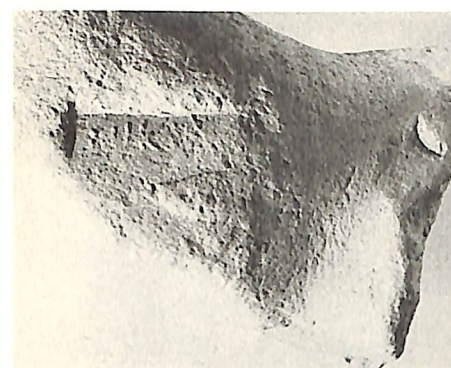
43



44

Thasian I: Class d, terms of Δικηκράτης (37), Ίσαγόρης (38), Ίσχυτής (39), Κλεοφῶν (40-42), Μέγων II (43), Μυτάκος (44). Late 5th, early 4th centuries B.C.

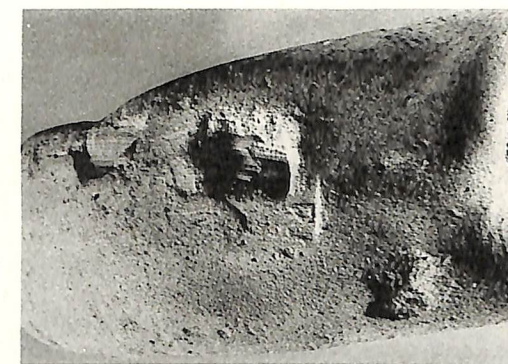
STAMPED WINE JAR FRAGMENTS



45



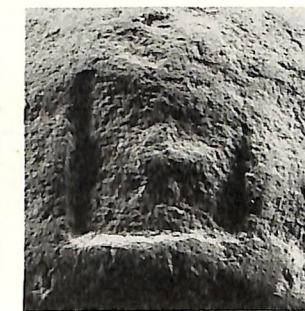
46



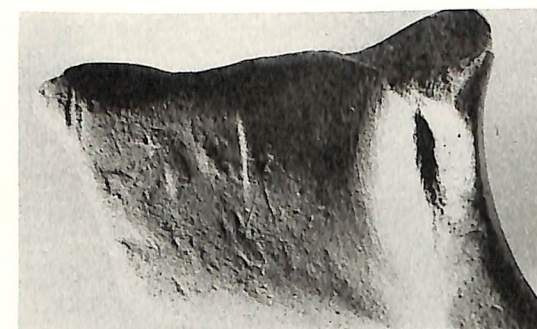
47



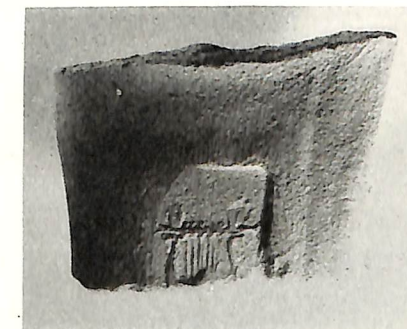
48



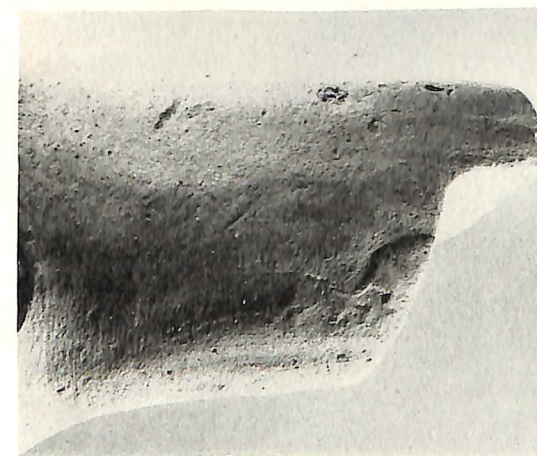
50



51



53



54

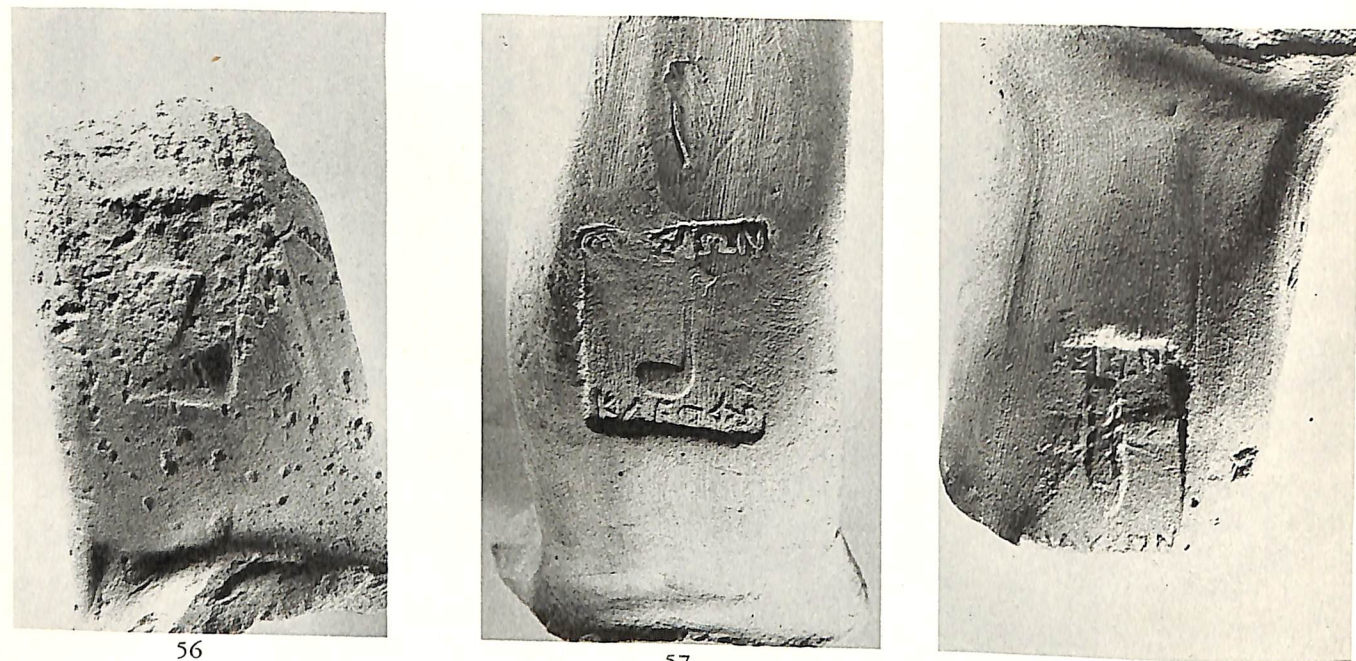


55

Thasian I: Classes d (45-54), and e (55). Before ca. 340 B.C.

STAMPED WINE JAR FRAGMENTS

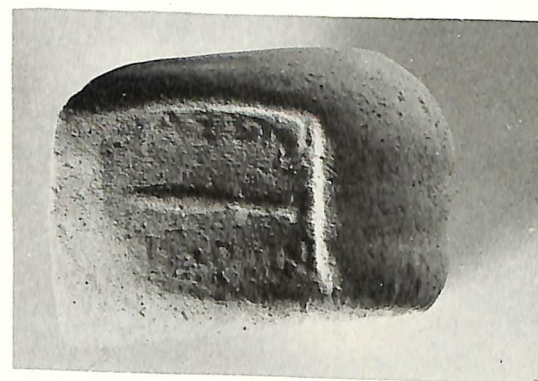




56

57

58



59



60



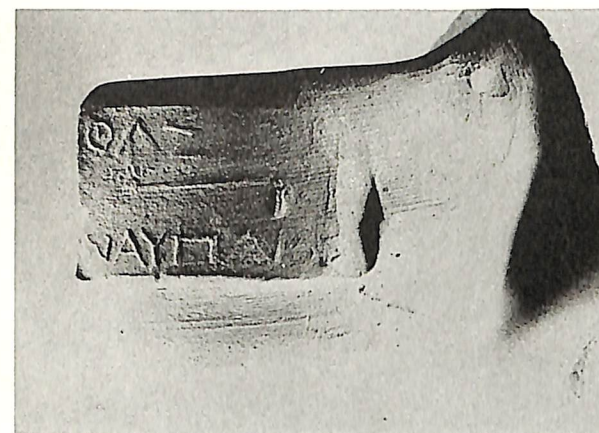
61



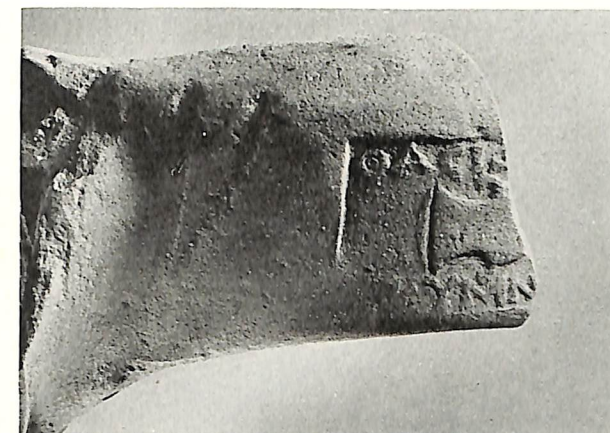
62

Thasian II: Classes a (56), and b (57-58), probably 3rd quarter, and Class c, *Αισχρίων* (59), *Ἀριστομένης* (60), *Ἀριστοφάνης* (61), *Κρινομένης* (62), probably 2nd half, of 4th century B. C.

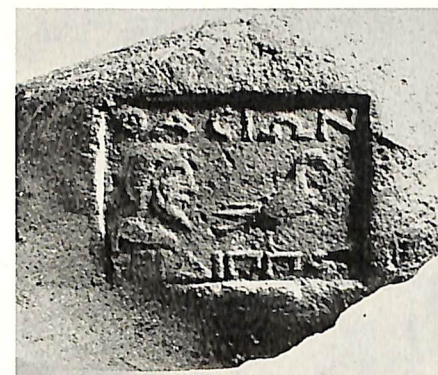
STAMPED WINE JAR FRAGMENTS



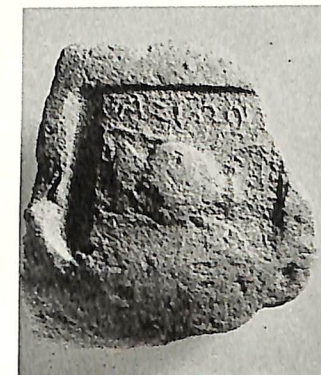
63



64



65

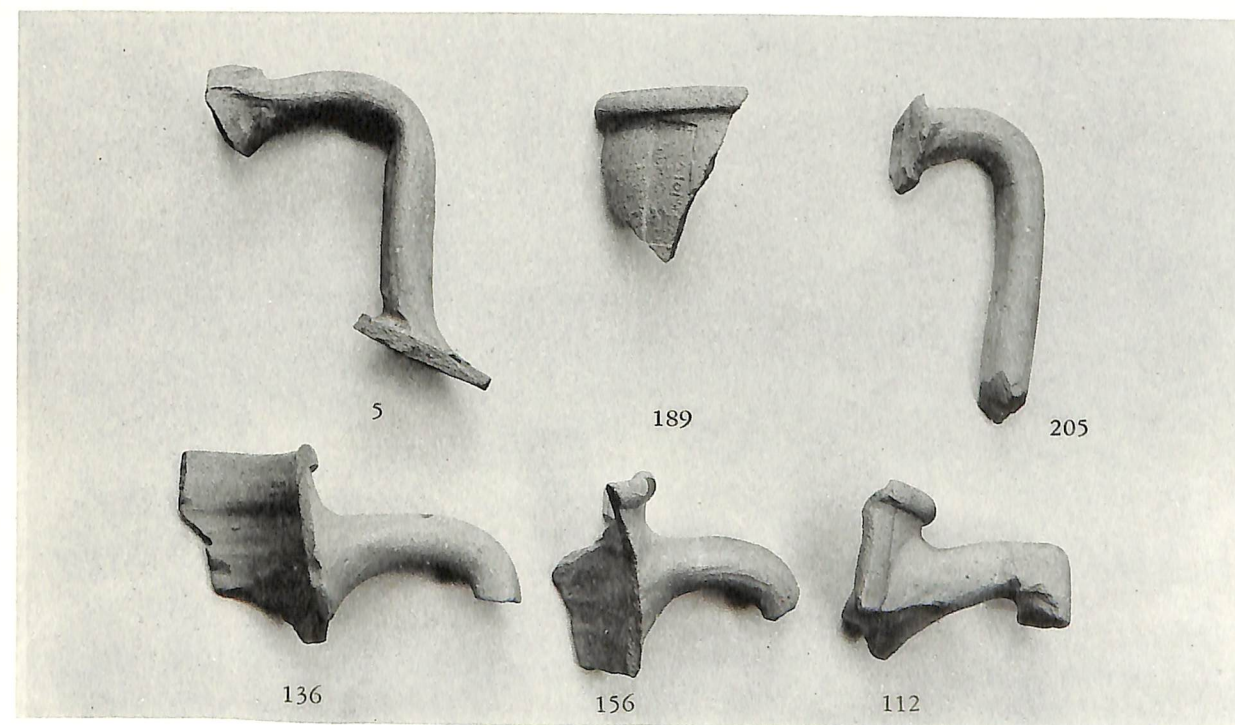


66



67

a. Thasian II: Class c, *Ναύπλιος* (63), *Σκύμνος* (64), *Φεῖδιππος* (65), *Κλεοφῶν* (66) and unrestored (67). 4th and 3rd centuries B. C.



5

189

205

136

156

112

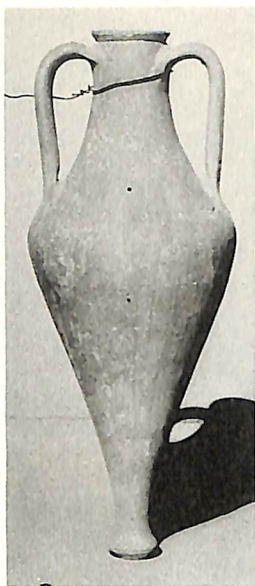
b. Side views of early Thasian (5), early Pontic (189, neck fragment), Parian (205), earlier Knidian (136), later Knidian (156), and late Rhodian (112) Fragments.

STAMPED WINE JAR FRAGMENTS





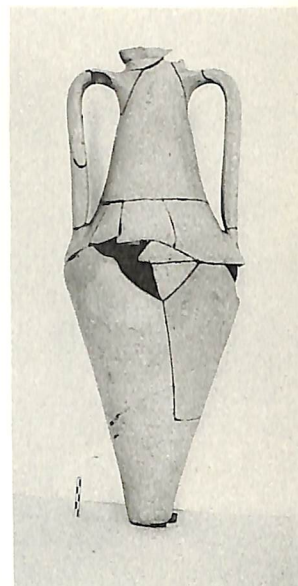
1



2: cf 16



3: cf 43



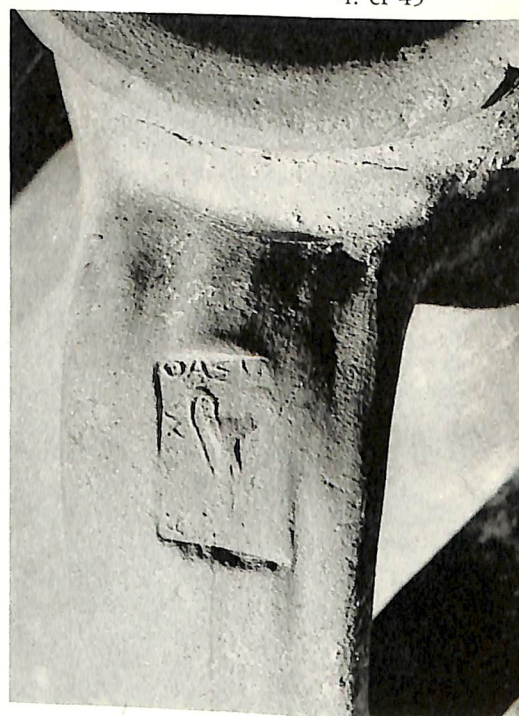
4: cf 45



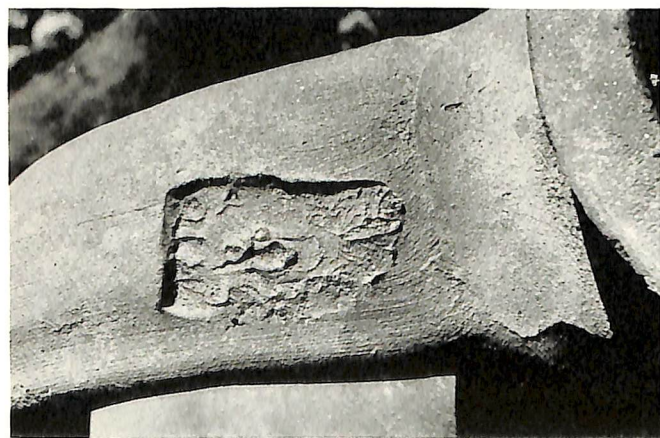
1a



1a (different lighting)



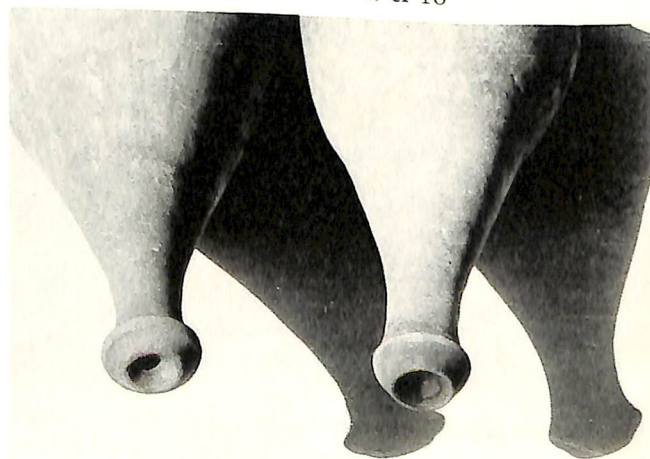
2a: cf 16



3a: cf 43



4a: cf 45



2 and 3

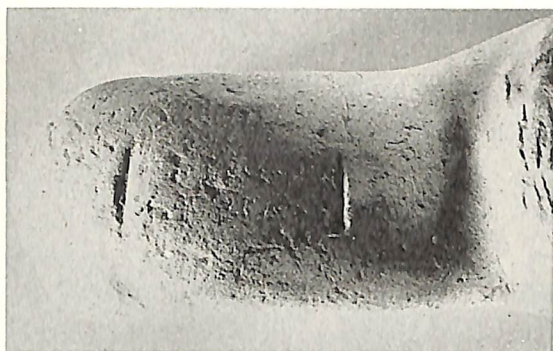
Thasian small Wine Amphoras at about 1:10; their Stamps, at about 1:1; toes of 2 and 3. Terms of 1.) Μέγων I, 2.) Ἀλθηνένης, 3.) Μέγων II, 4.) Νικίας. Ca. 410-340 B. C. See introduction to numbers 1-69.

STAMPED WINE JAR FRAGMENTS





82



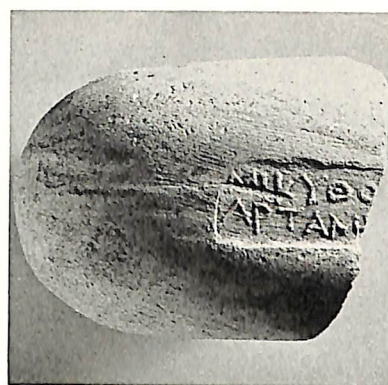
83



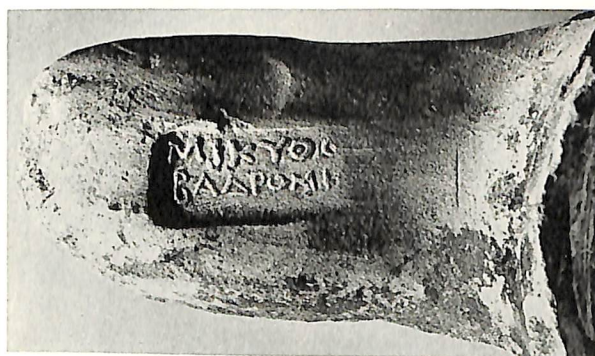
84



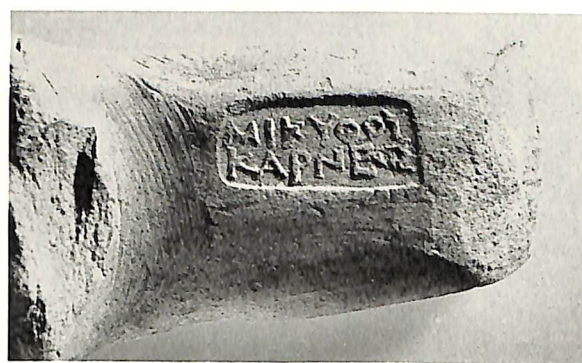
85



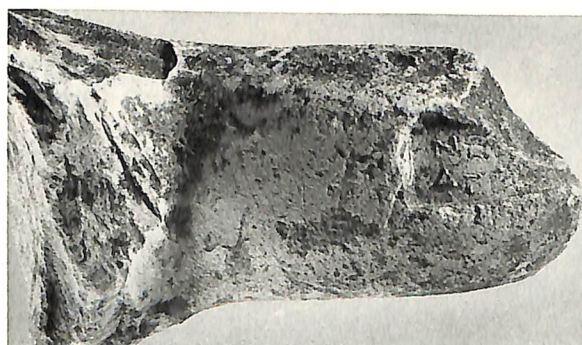
86



87



88



89

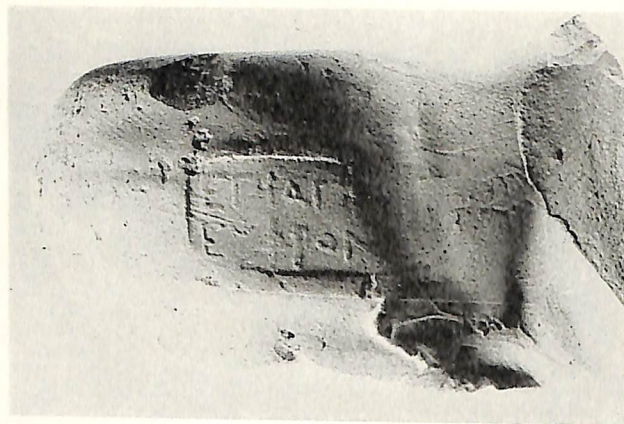


90

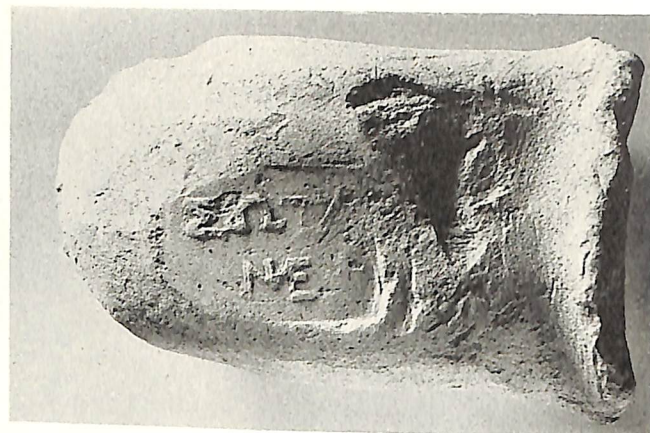
Rhodian I: c. With Rectangular Fabricants' Stamps, 1st half of 3rd century B.C.

STAMPED WINE JAR FRAGMENTS

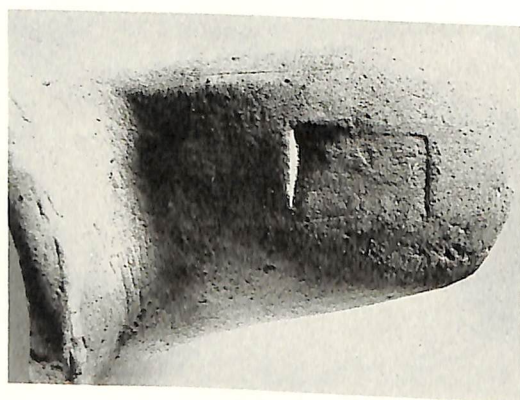




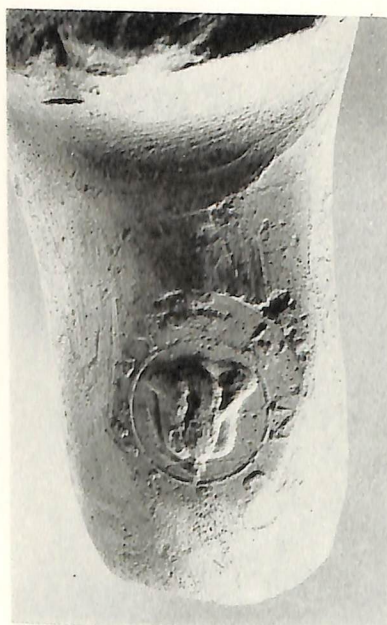
70



71



72



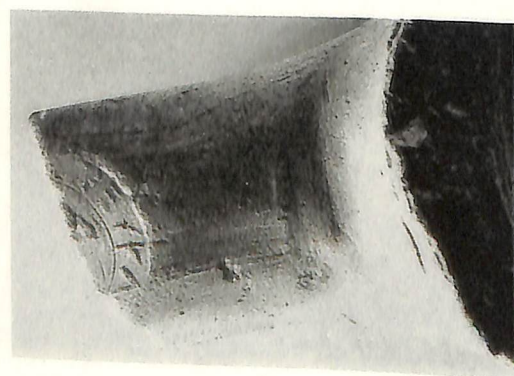
73



74



75

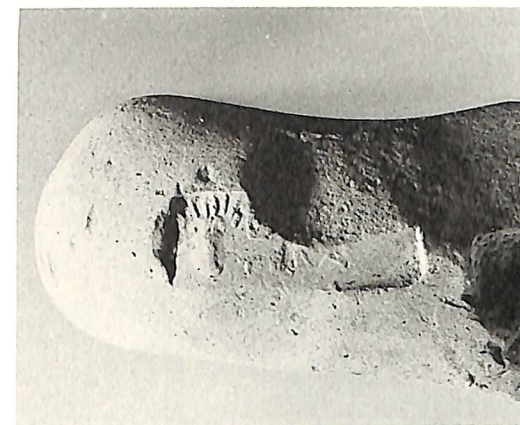


76



77

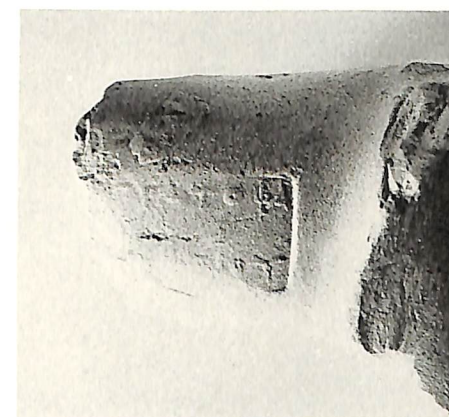
Rhodian I: a. With Rectangular Stamps, before *ca.* 300 B. C. (70-72); b. With Circular Stamps, early 3rd century B. C. (73-77).  
STAMPED WINE JAR FRAGMENTS



102



103



104



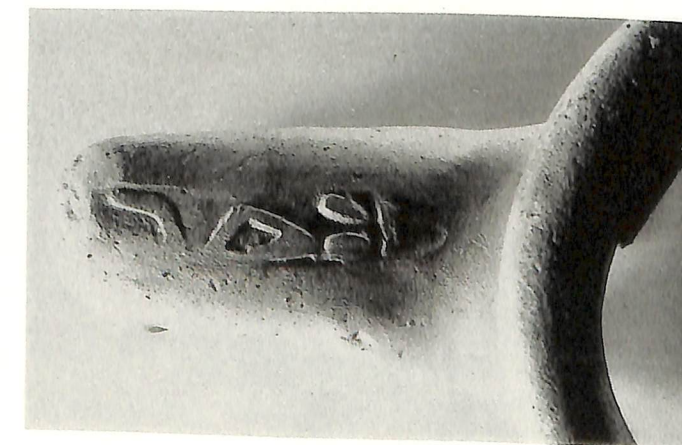
105



110



111

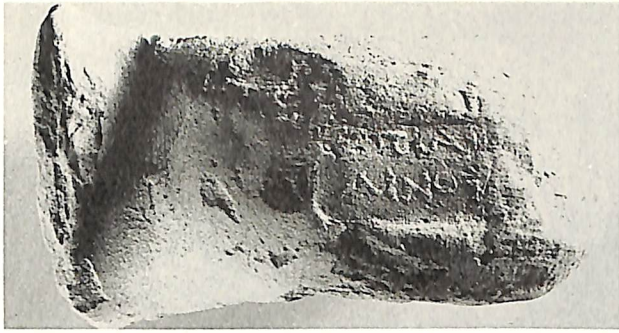


112

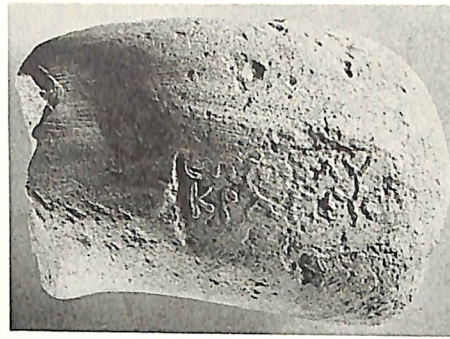
Rhodian: III. *ca.* 220-180 B. C. (102-105); IV. 180-150 B. C. (110); V. 2nd half of 2nd century (111); VI. early 1st century B. C. (112).

STAMPED WINE JAR FRAGMENTS





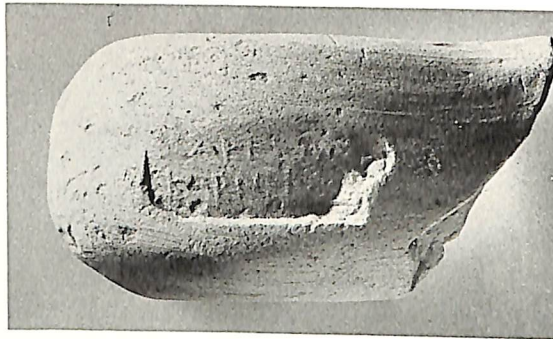
93



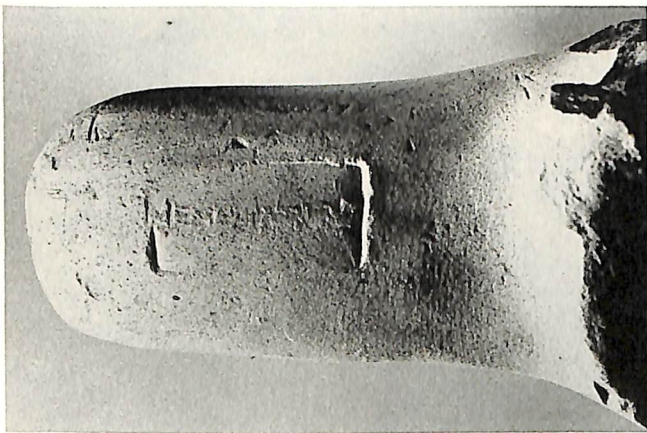
95



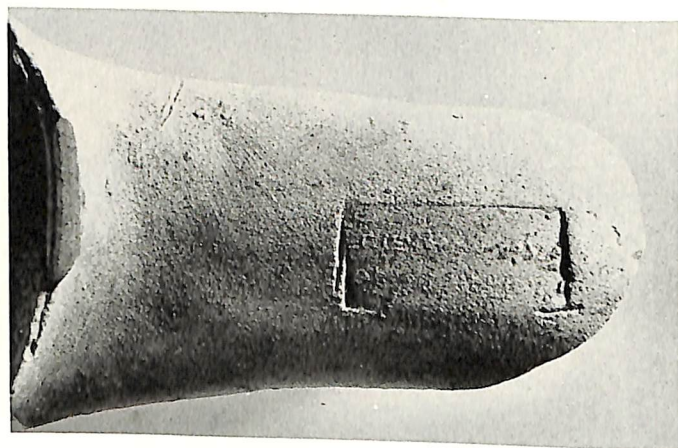
96



97



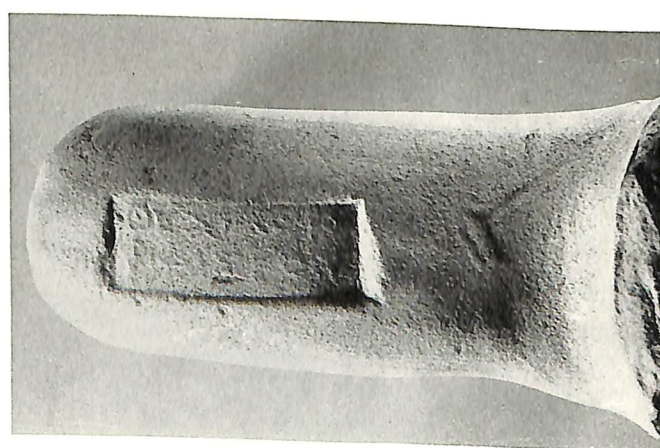
98



99



100

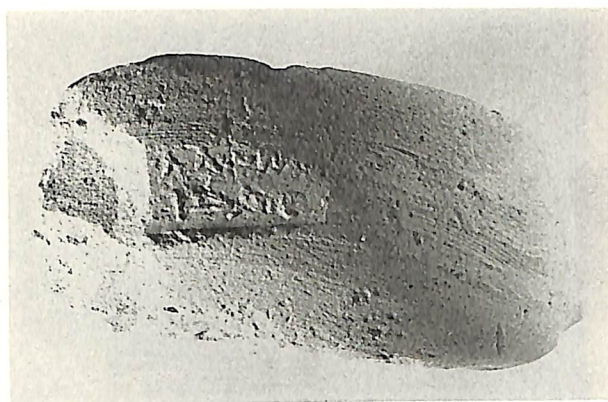


101

Rhodian: I, c. 1st half (93-97); II, 3rd quarter (98-101), of 3rd century B. C.

STAMPED WINE JAR FRAGMENTS





113



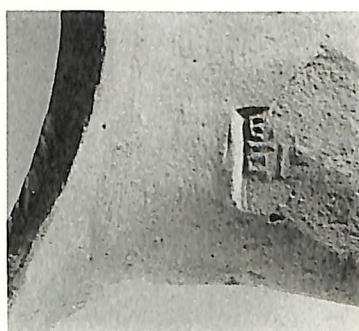
115



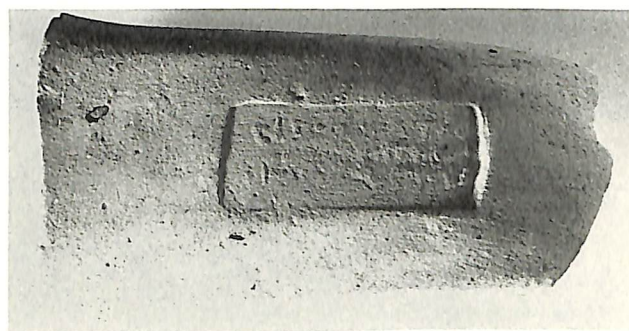
116



120



121



122



125



126

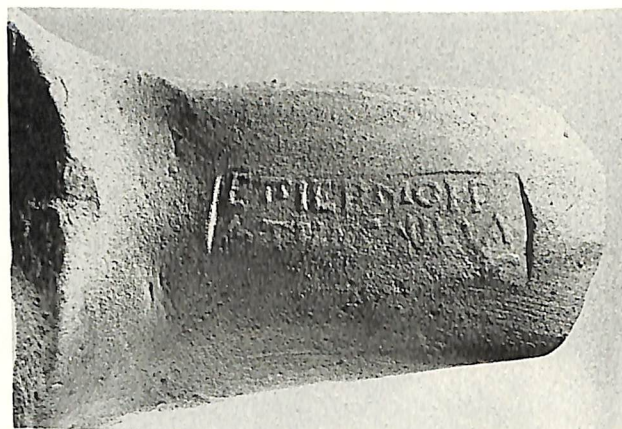
Knidian with Non-circular Stamps: 1. before ca. 150 B. C.: Fabricants Ἀπολλώνιος through Θεοφείδης.

STAMPED WINE JAR FRAGMENTS





127



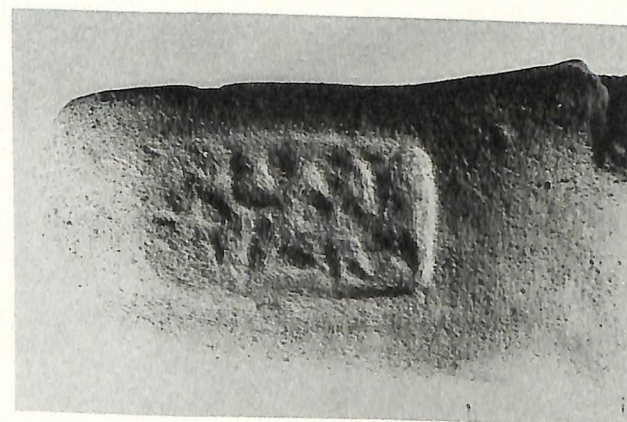
129



130



131



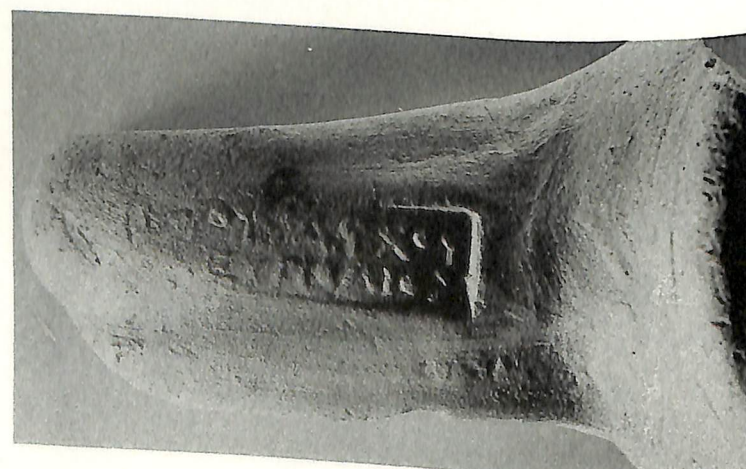
133



134



135



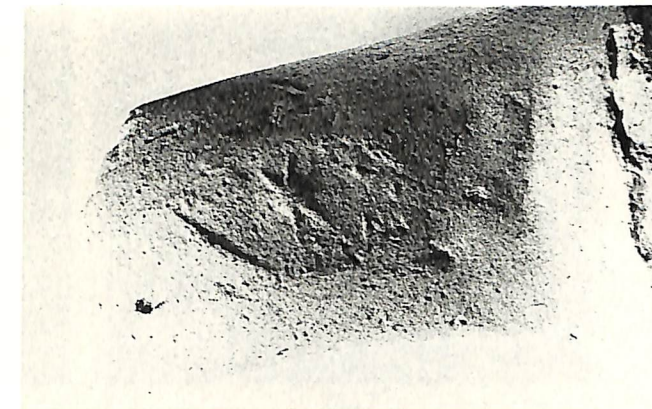
136

Knidian with Non-circular Stamps: 1. before ca. 150 B. C.: Fabricants Μένης through Χαρμοκράτης (127-131); Eponyms in separate stamps, including (134-136) φρούραρχοι.

STAMPED WINE JAR FRAGMENTS



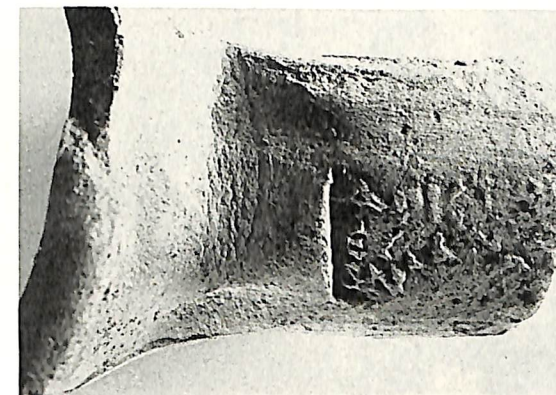
138



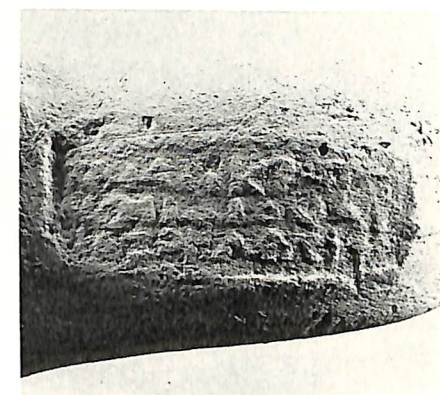
139



141



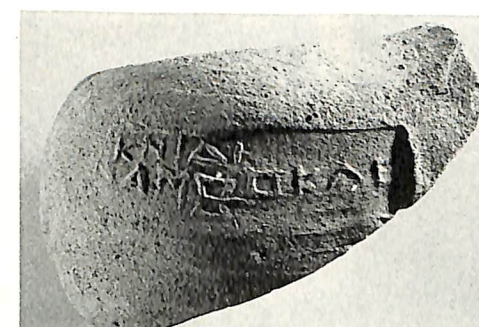
145



146



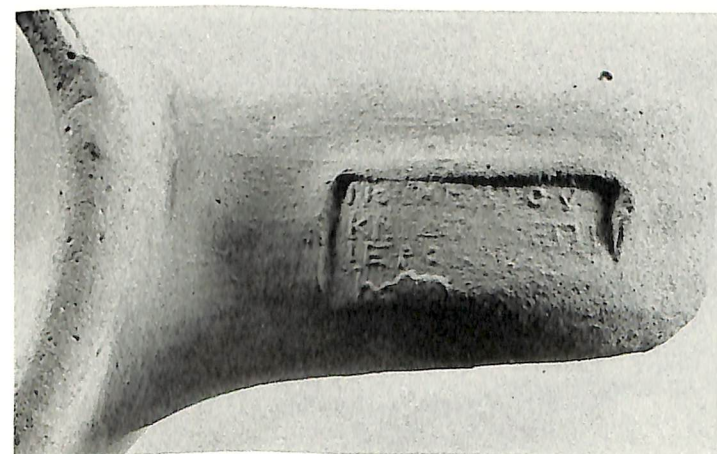
147



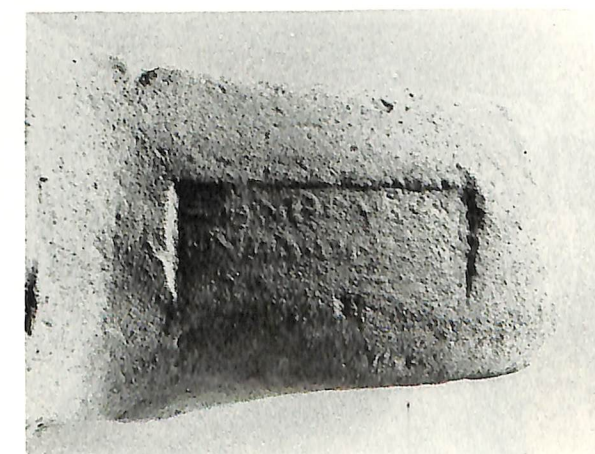
148



149



150

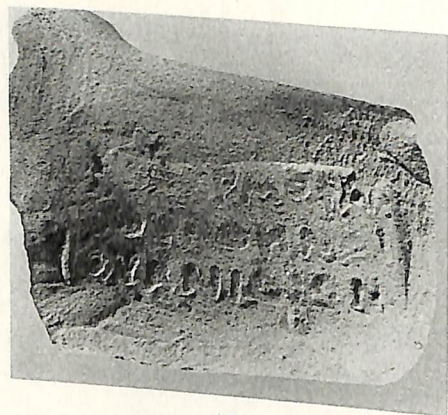


151

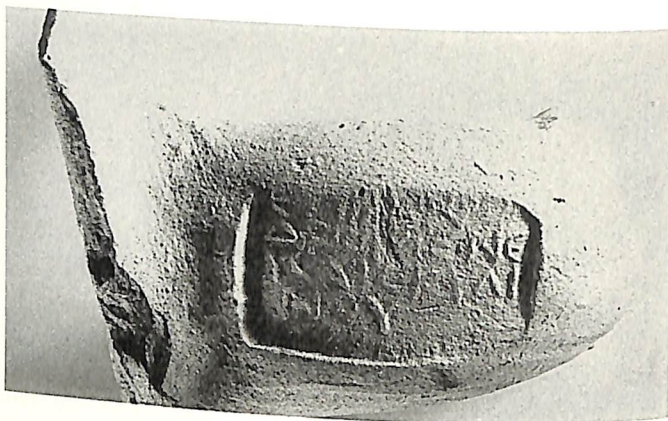
Knidian with Non-circular Stamps: 2. 2nd half of 2nd century B. C.

STAMPED WINE JAR FRAGMENTS

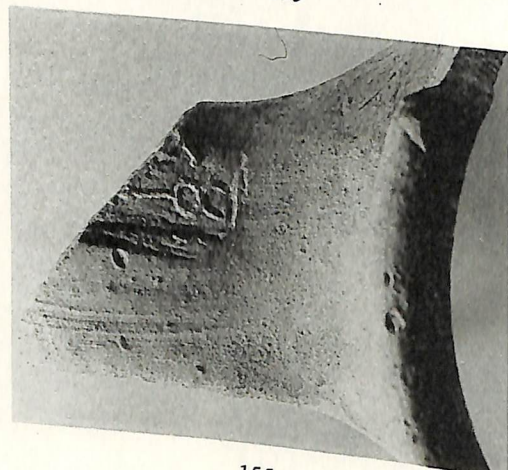




153



154



155



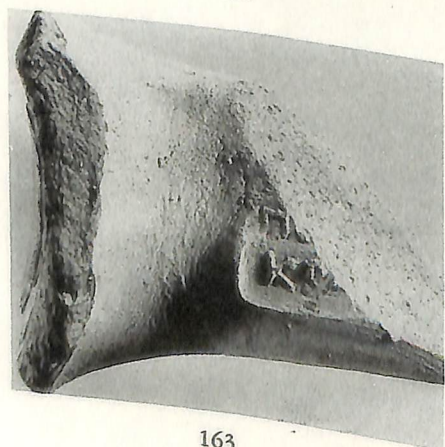
156



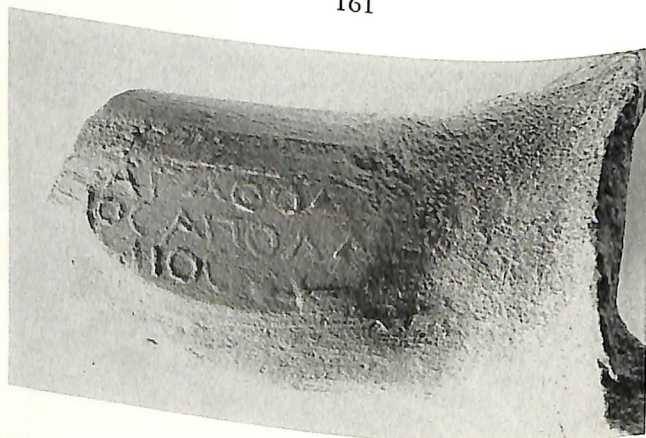
158



161

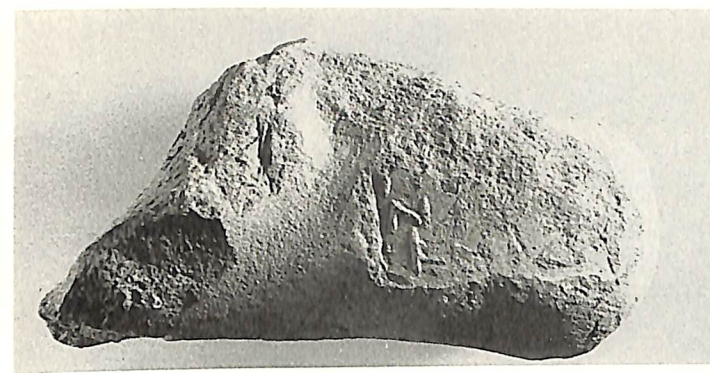


163



165

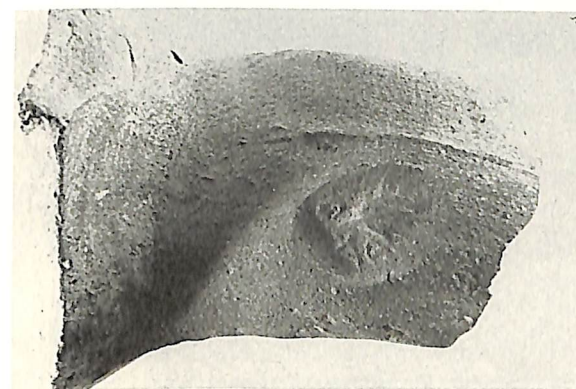
Knidian with Non-circular Stamps: 3. *duoviri* period (late 2nd through early 1st centuries B. C.).  
STAMPED WINE JAR FRAGMENTS



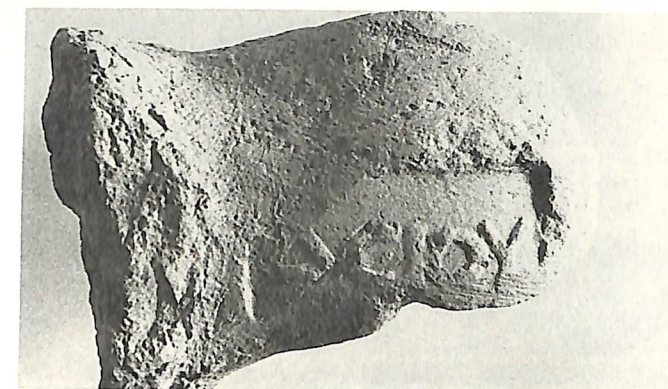
166



167



168



169

a. Knidian with Non-circular Stamps: 4. 1st century B. C. after *ca.* 86 B. C.



170



172

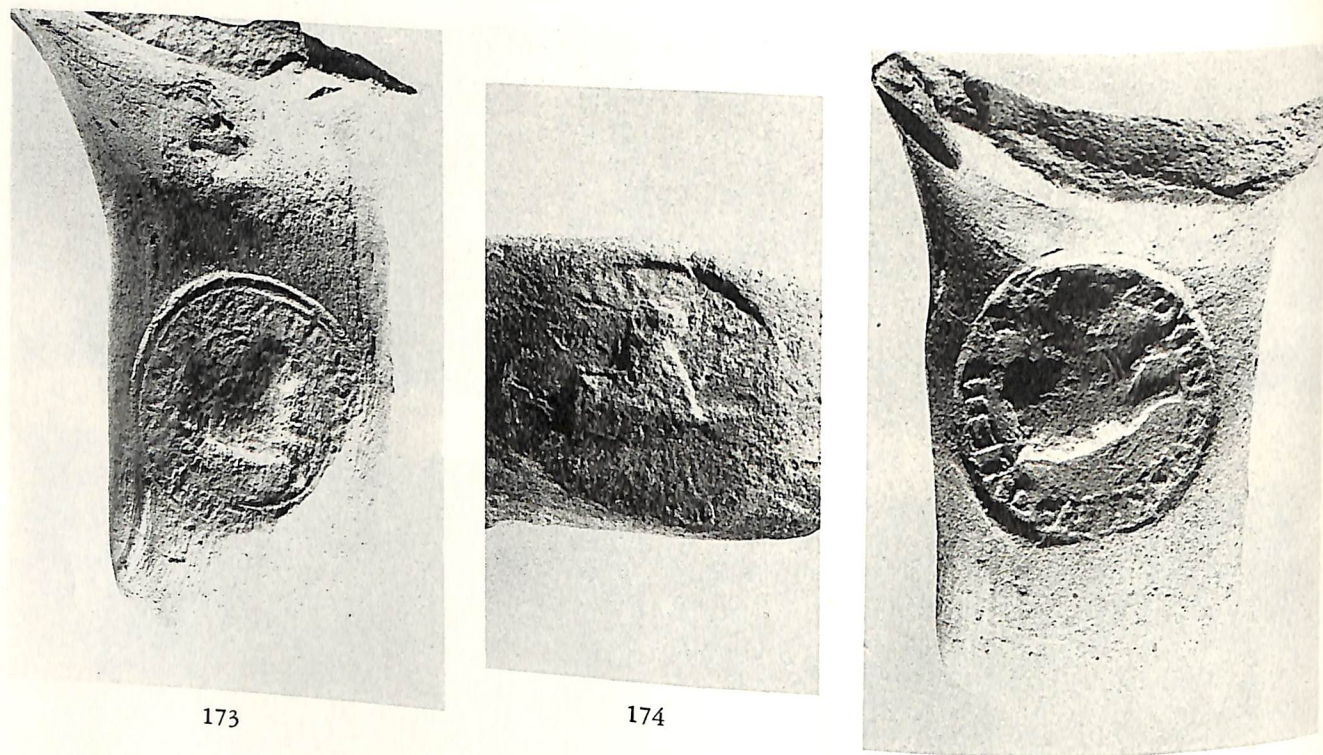


171

b. Knidian with Circular Stamps: 2nd century B. C., probably 1st and 3rd quarters.

STAMPED WINE JAR FRAGMENTS

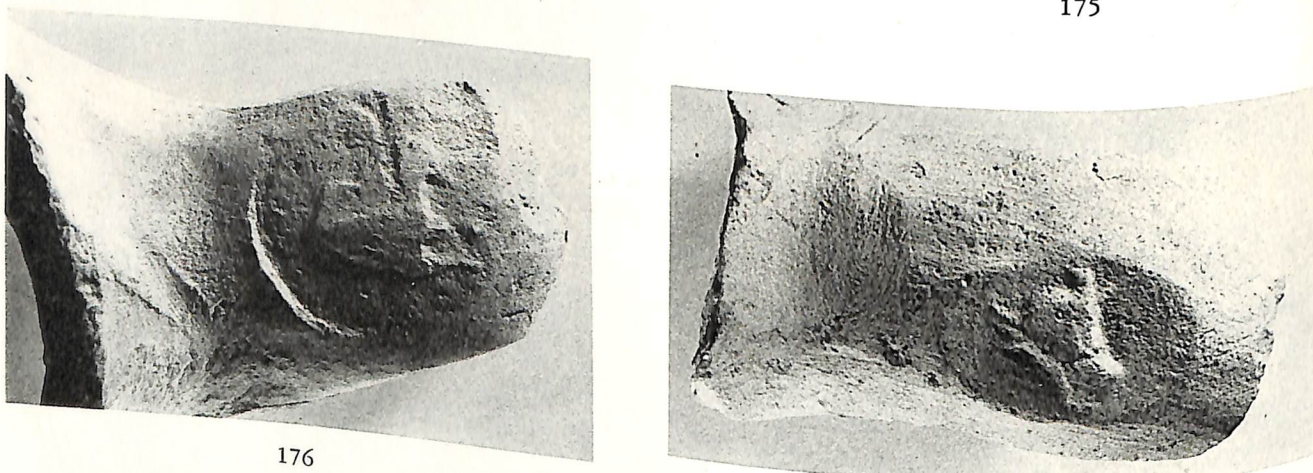




173

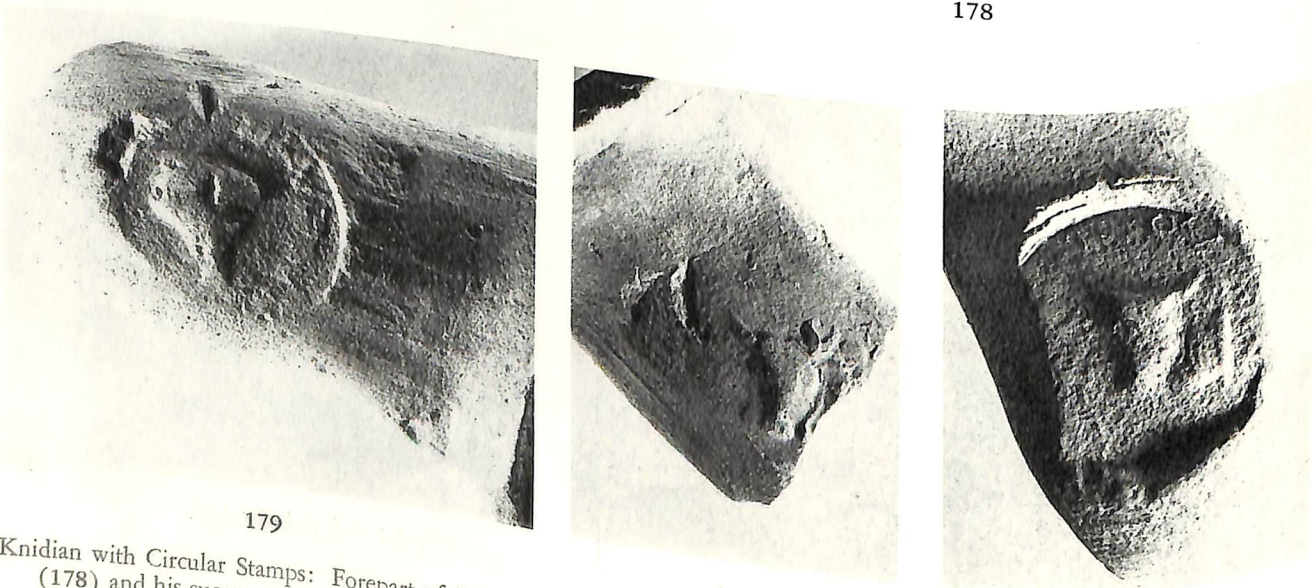
174

175



176

178



179

180

181

Knidian with Circular Stamps: Forepart of Lion Types (173-176); and Bull's Head Types of Δαμοκράτης ὁ Ἀριστοκλεῦς (178) and his successor (?) (179-181). *Ca.* last quarter of 2nd century B. C., including early part of *duoviri* period.

STAMPED WINE JAR FRAGMENTS



182



183



184



185

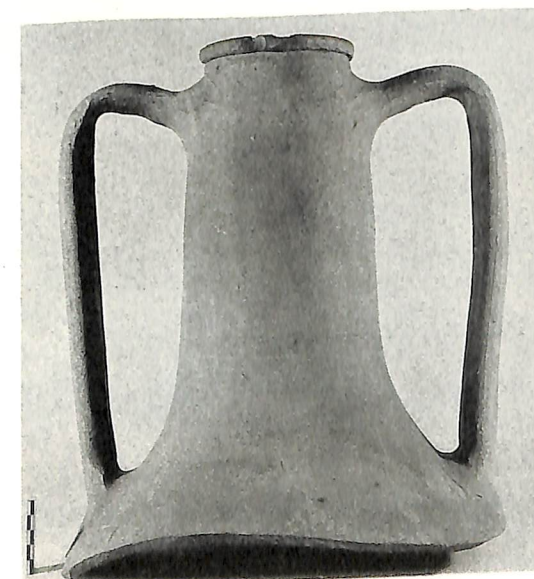


187



188

a. Knidian with Circular Stamps: Bull's Head Types of Διοσκουρίδας (182-187) and of Χρύσιππος (?) (188). *Duoviri* period, early 1st century B. C.



SS 2170: cf 171-2

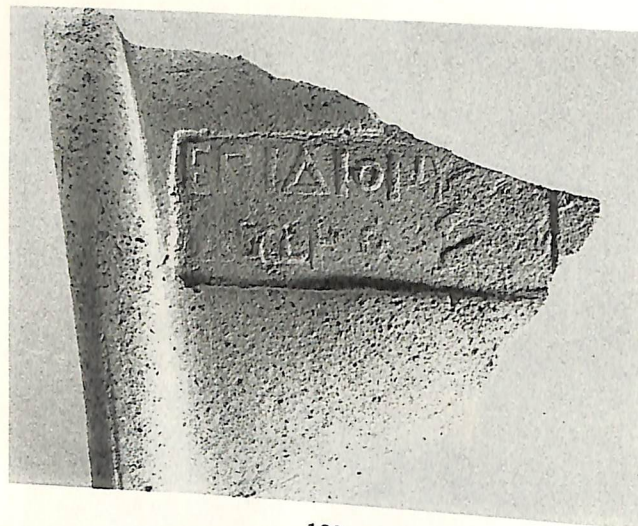


Kerameikos VG 395: cf 169

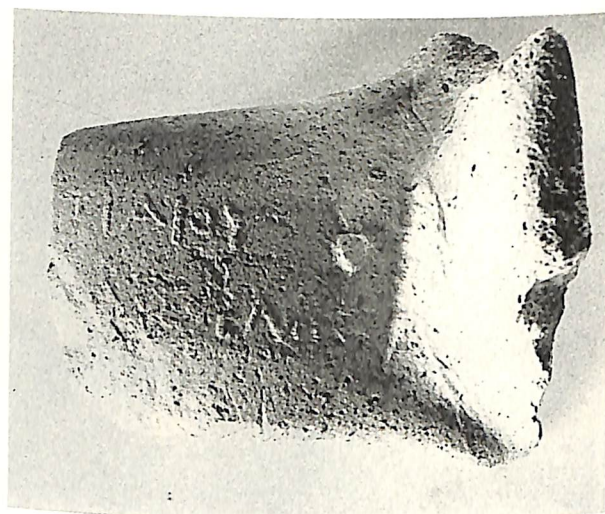
b. Necks of Knidian Jars at *ca.* 1:5: SS 2170, with Stamps like 171-2; and Kerameikos VG 395, with Stamps like 169. 3rd quarter of the 2nd century B. C., and probably mid 1st century B. C.

STAMPED WINE JAR FRAGMENTS

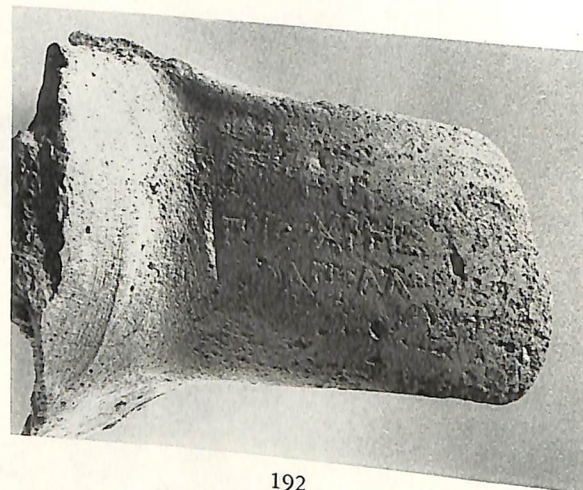




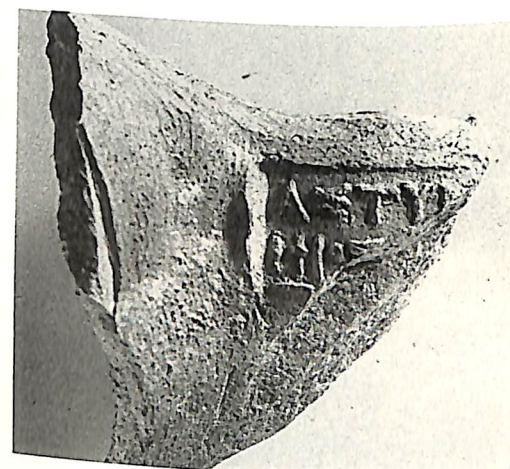
189



191



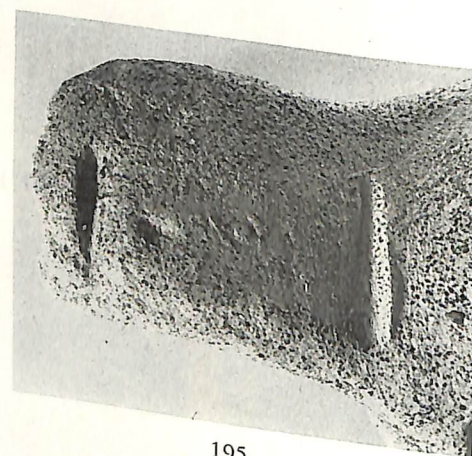
192



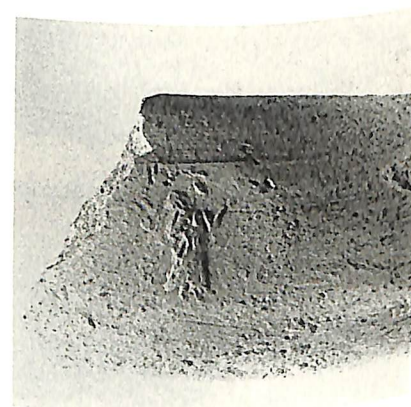
193



194



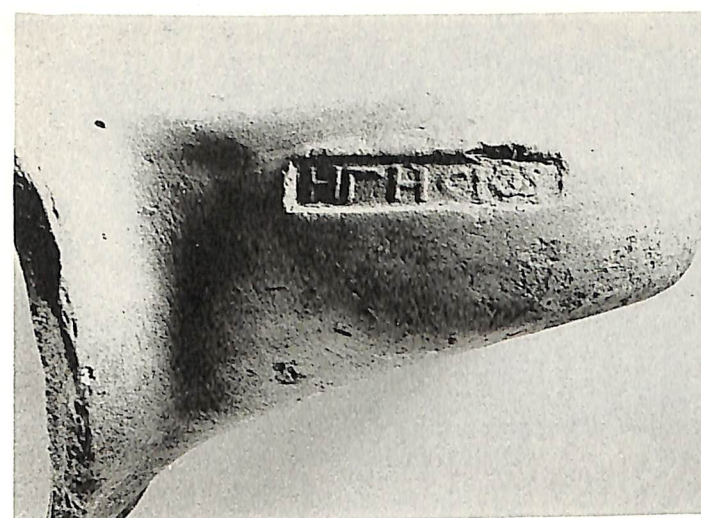
195



196

Pontic, probably from Sinope: late 4th century to 270 B. C. (189); *ca.* 220-183 B. C. (191); *ca.* 150-122 B. C. (192); and *ca.* 121-70 B. C. (193-196). Grakov's dates: see introduction to 189-196.

STAMPED WINE JAR FRAGMENTS



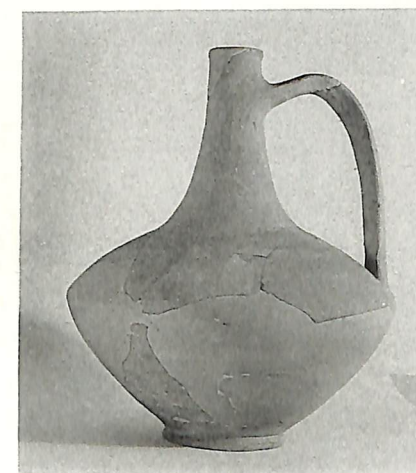
197



198



199



SS 10259: cf 200-202



200



201



202



203

Chian Amphora Handles (197-199); Lagynos Handles of which 200-202 are probably Chian; and a Stamped Lagynos to illustrate the shape (SS 10259, ht. 0.29 m.). 3rd perhaps to early 2nd century B. C.

STAMPED WINE JAR FRAGMENTS





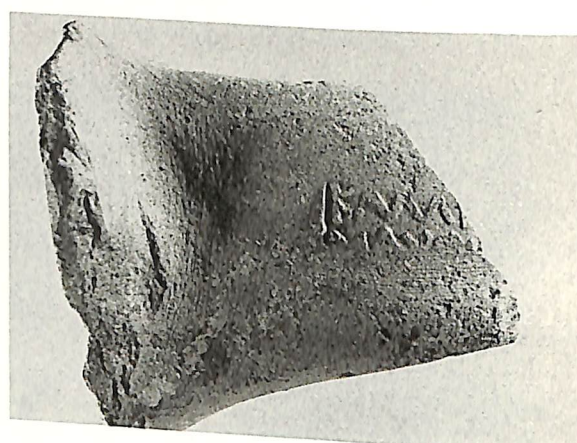
204



205



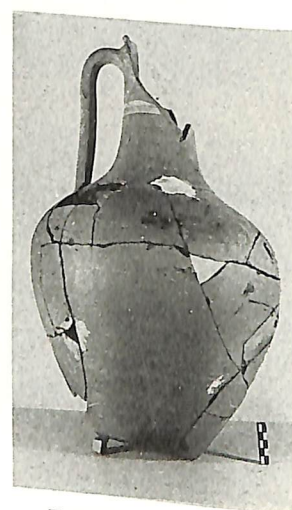
206



207



208



P 8422: cf 206-208



SS 10048: cf 204



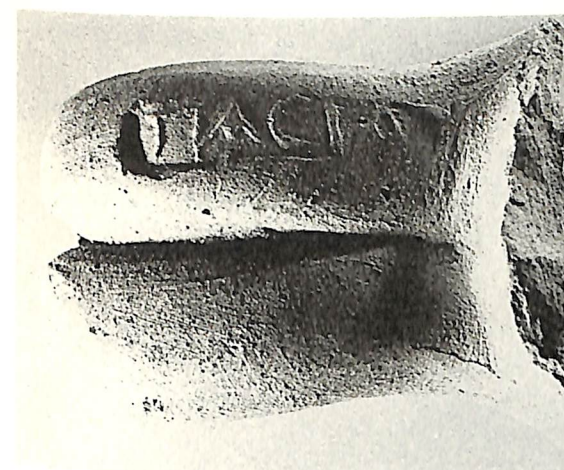
C 34-1641: cf 205



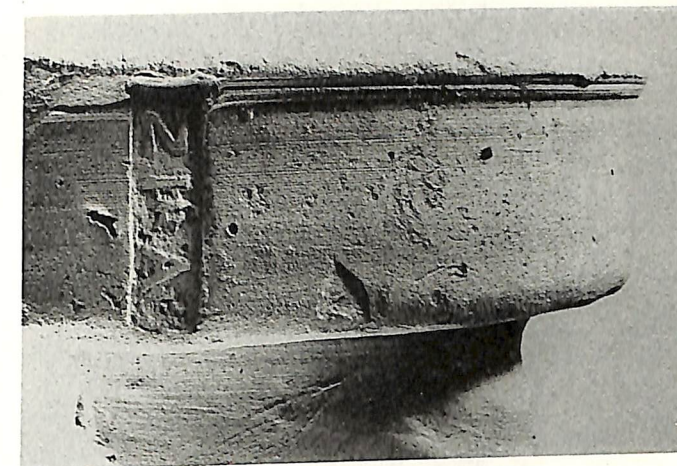
SS 3791: cf 206-28

Corcyrean (?) (204), perhaps 4th century; Parian (205), 3rd century; and Parmeniskos Group (206-208), 3rd or early 2nd century B. C. Fragmentary Jars to illustrate their restoration.

# STAMPED WINE JAR FRAGMENTS



209



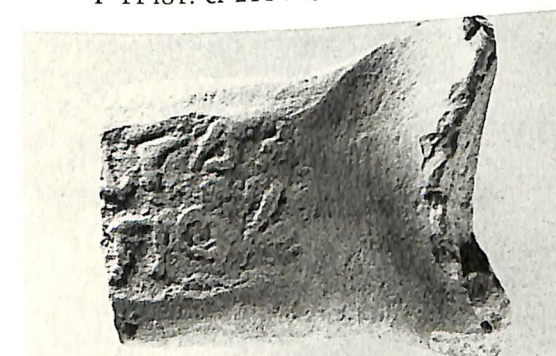
210



P 11481: cf 211-213



213



211



212

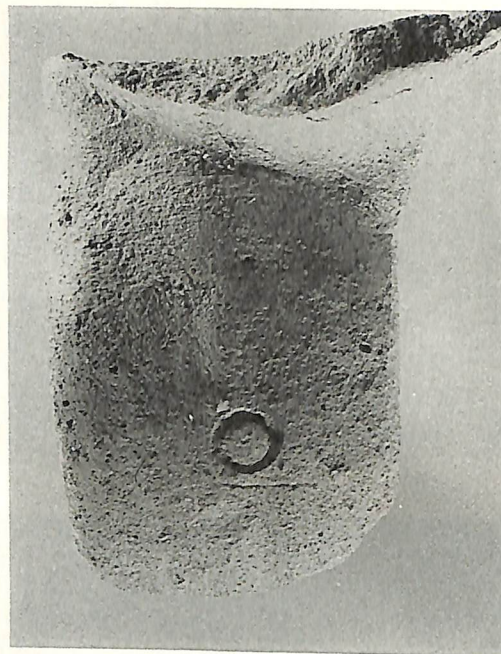


214

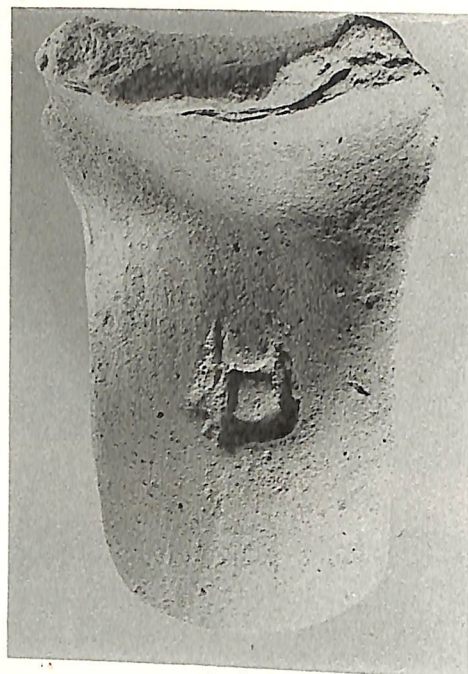
Coan (209); Roman (210); Imperial Group (211-213, and P 11481, at 1:10, to show their restoration); and Byzantine (214). Respectively 1st century B. C., 1st century A. D. (both tentative), 1st to early 2nd century A. D. for the Imperial, and 7th century A. D. for the Byzantine.

# STAMPED WINE JAR FRAGMENTS





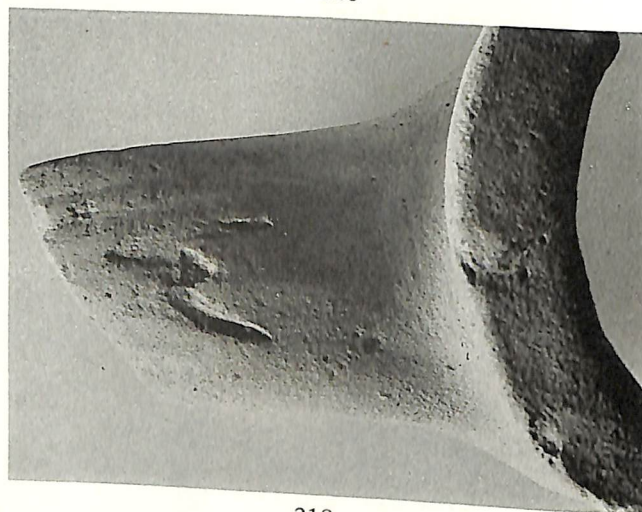
215



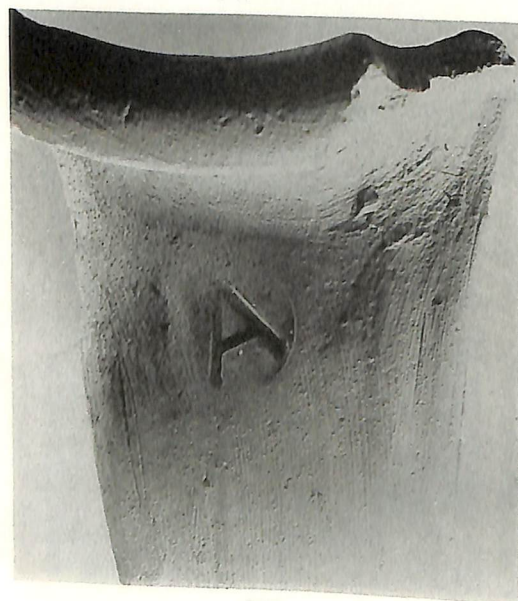
216



217



218



219



220

Of Unknown Origin: I. From the filling of Period III of the Assembly Place: a. Handles with (fired) Incuse Marks. Before ca. 340 B. C.  
STAMPED WINE JAR FRAGMENTS



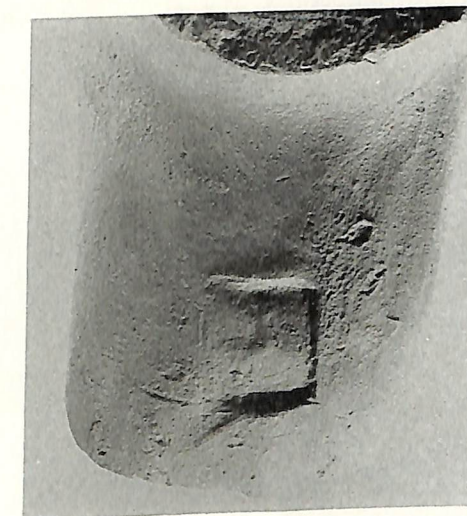
221



222



224



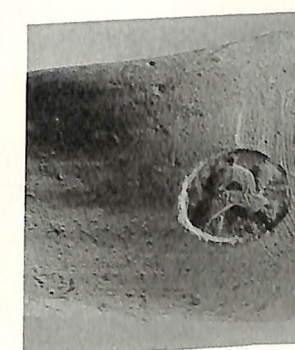
225



226



226 enlarged



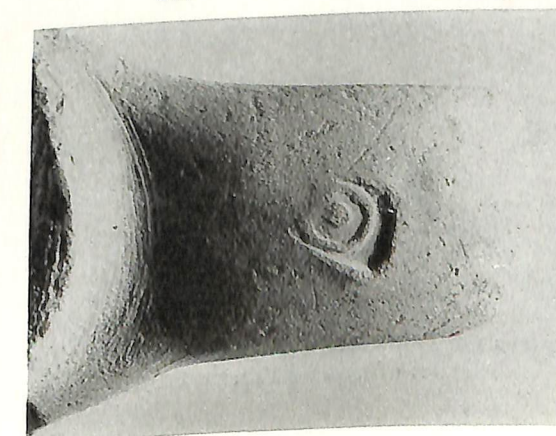
227



227 enlarged



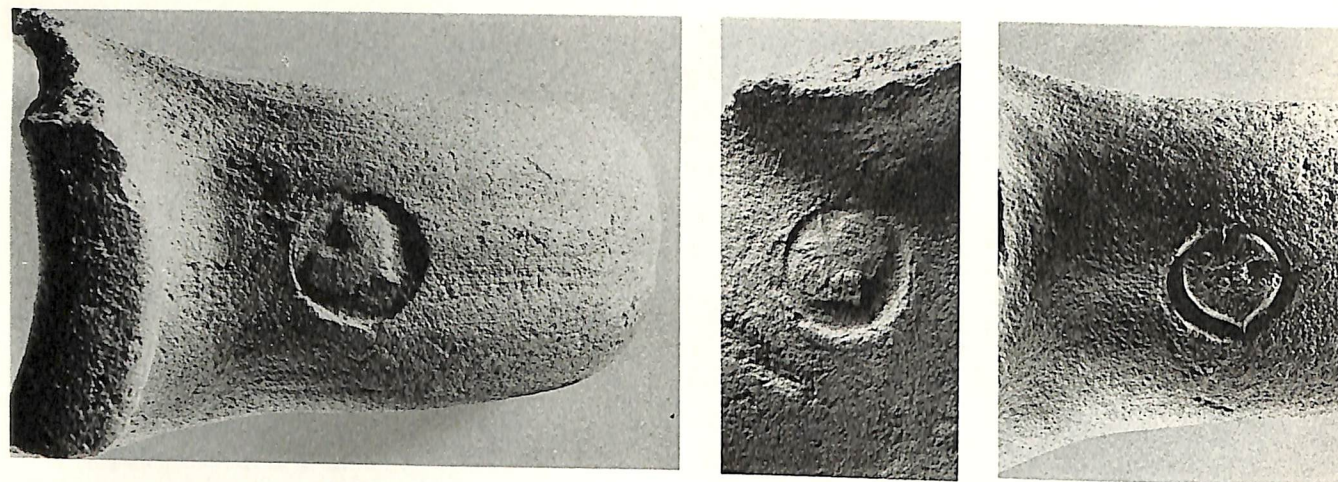
228



229

Of Unknown Origin: I. From the filling of Period III of the Assembly Place: b. Various Devices on Handles of Finer Fabric. Before ca. 340 B. C.  
STAMPED WINE JAR FRAGMENTS

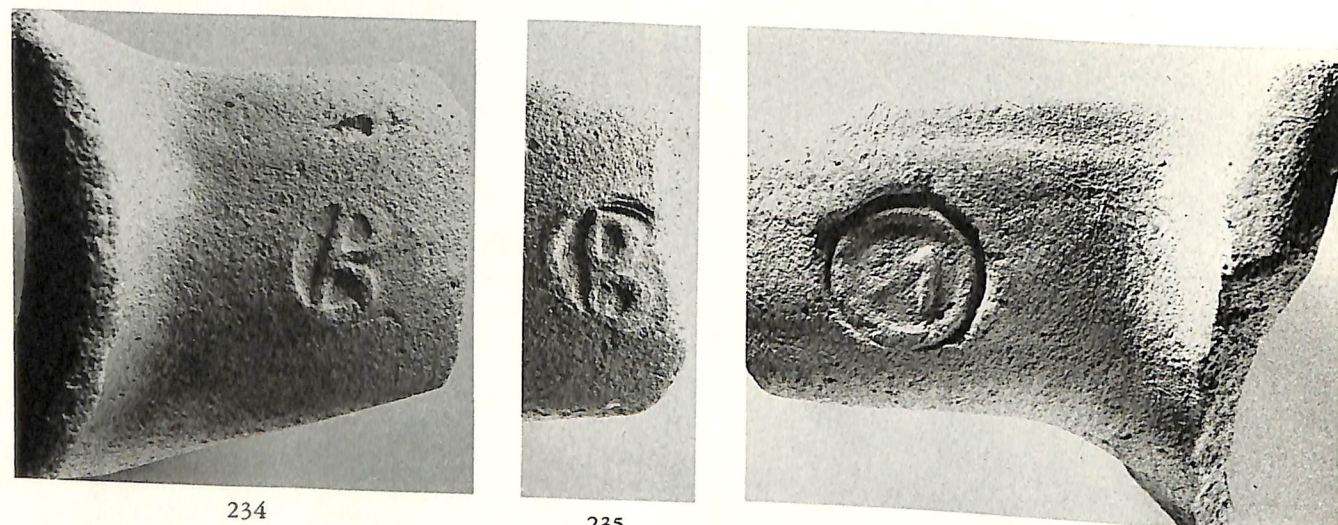




230

232

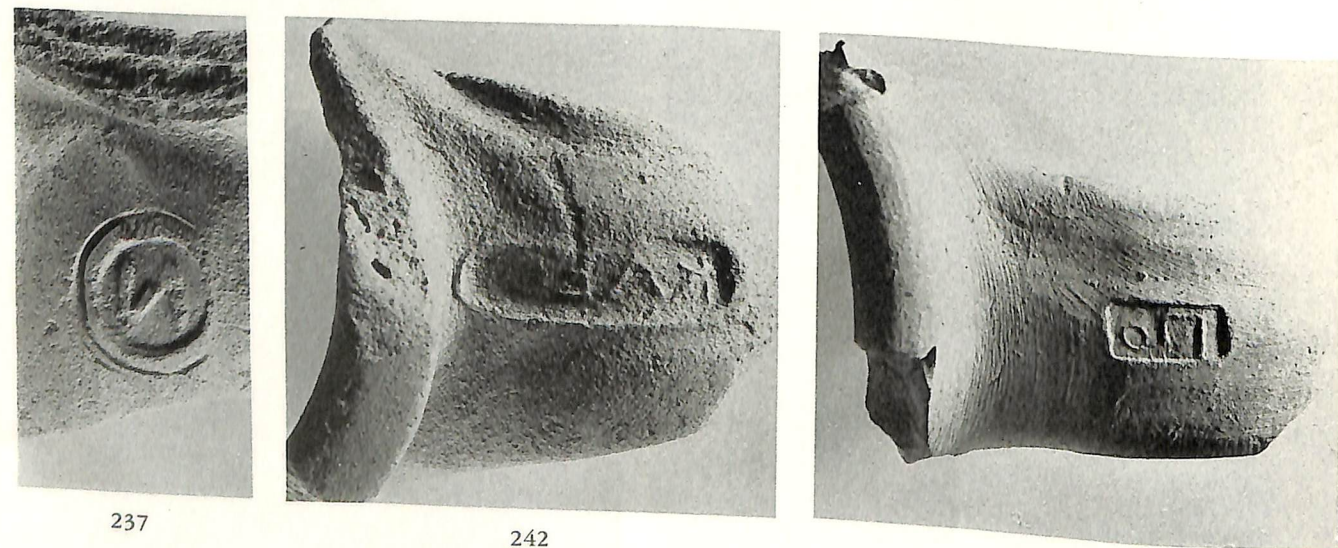
233



234

235

236



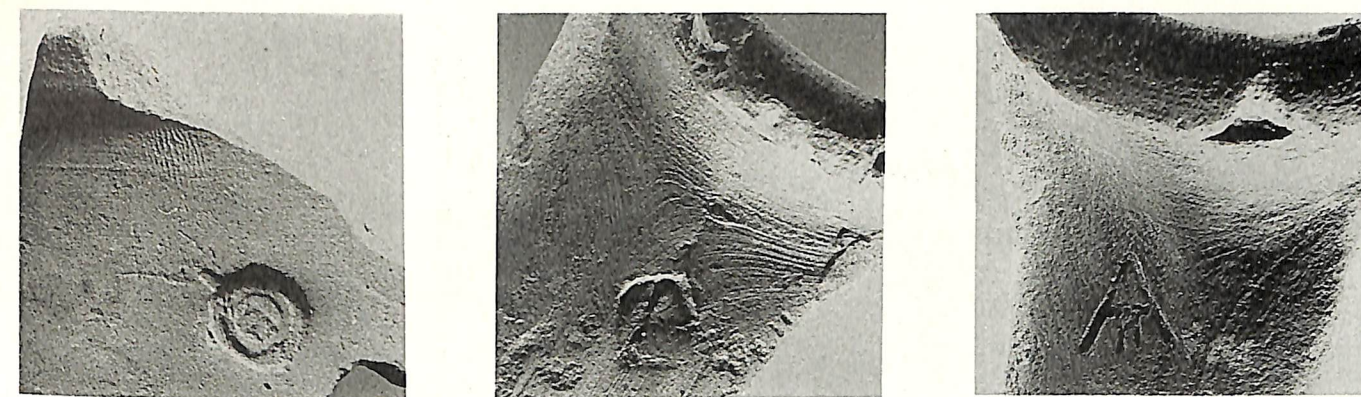
237

242

243

Of Unknown Origin: I. From the filling of Period III of the Assembly Place: c. Simple Devices and Single Letters on Handles of Coarser Fabric (230-237); and d. Abbreviations (242, 243). Before ca. 340 B. C.

STAMPED WINE JAR FRAGMENTS



244

245

247



248

249

250



251

252

253



254

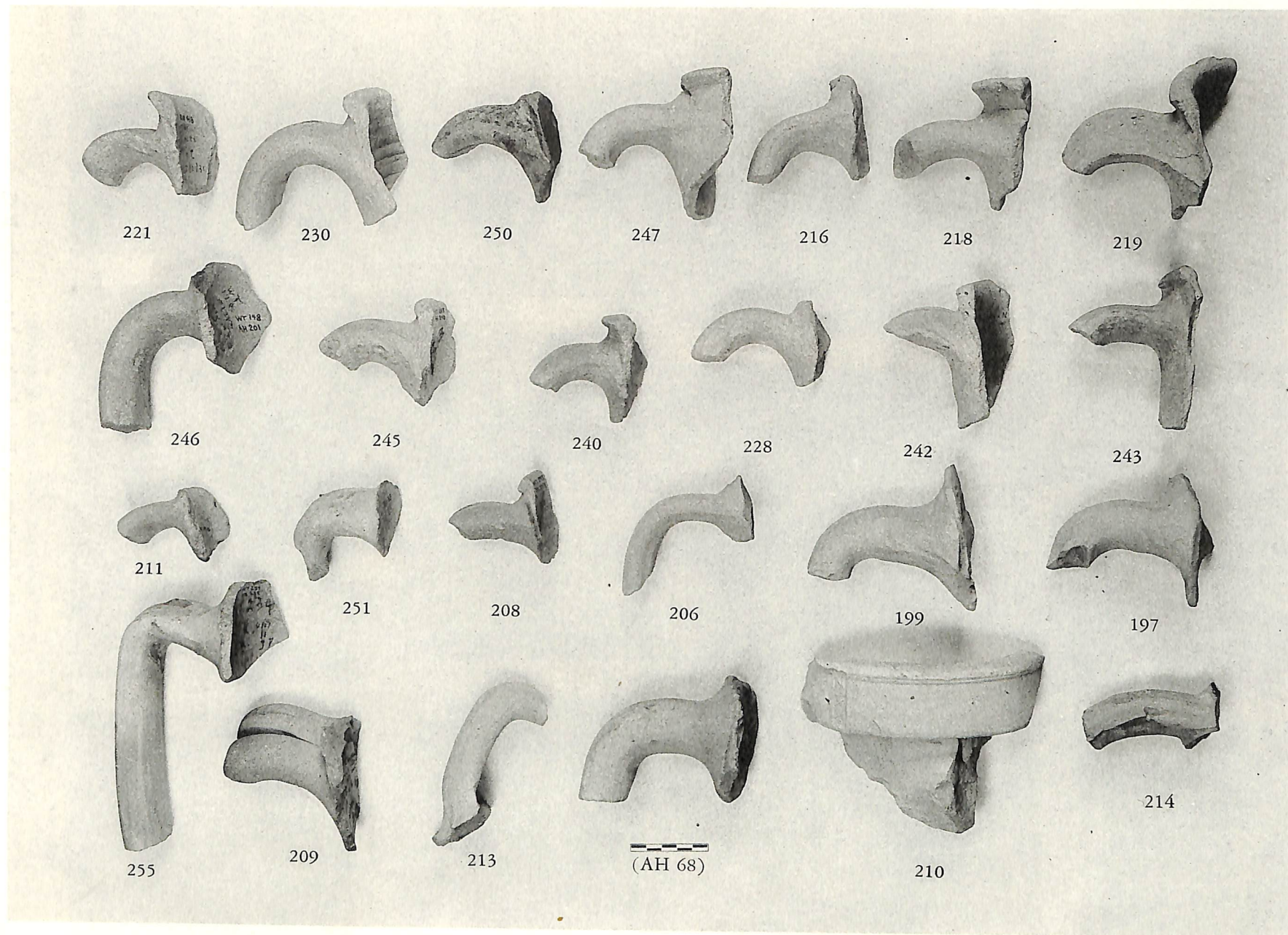
255

256

Of Unknown Origin: II. Miscellaneous. End of 5th to 1st centuries B. C.

STAMPED WINE JAR FRAGMENTS





Side Views of Handles, mostly of Unknown Origin.

STAMPED WINE JAR FRAGMENTS



PNYX - PLATES