

VRG_Folder — 0575

ΒΑΝΤΕΠΙΟΥΑ
ΕΕΝΟΔΟΚΕΙΟΝ ΠΑΛΛΑΔΙΟΝ
Α ΤΙΣΙΝΑ



2418.62

1.23

ΒΑ ΧΙΑΚΟ

ΠΗΓΟ

α-5,
0.63



ÉCOLE FRANÇAISE D'ATHÈNES

1960

given in by
M. Bernard
5.7.61

Thesis finished, 1960



for M. Bernard

5.7.61

Thesis final, 1960

24.8.62

1.23

ΒΑΝΤΕΡΓΙΟΥΔ
ΞΕΝΟΔΟΧΕΙΟΝ ΠΑΛΛΑΔΙΟΝ
ΛΙΜΕΝΑ
ΘΑΞΟ

ΣΑΣ ΠΑΡΑΚΑΛΩ ΠΟΛΥ ΕΑΝ ΕΠΙΤΡΕΠΕΤΑΙ ΝΑ ΜΕΤΡΑΣ ΥΨΟΣ ΑΠΟ ΑΡΧΑΙΚΟ ΑΜΦΟΡΕΑ ΧΙΑΚΟ
ΠΟΥ ΒΡΕΘΗΚΕ ΕΙΣ ΘΑΞΟ ΤΟ 1960 ΣΤΟΙ ΧΡΟΝΙΑ ΠΟΛΛΑ ΕΙΣ ΤΟΝ ΜΠΑΡΜΠΑ ΔΗΜΗΤΡΟ
ΧΑΡΙΤΟΠΟΥΔΟ ΣΤΟΙ ΚΑΛΗ ΔΙΑΣΚΕΔΑΣΙ

ΓΚΡΑΙΝΣ

He did measure it,
and got H.T. 0.63

PARACHIAN?
or PARIAN?

or PEPARETHOS?



PARACHIAN

- 2 -

for
ent. of TX. 89 & Gardar
file under G. 12. 15 L. 1. PEPARETHOS 3.02

On the shapes. It would be a little better if you had something better as your anchor for the Peparethos type than your fig.s ~~Fig~~ 7-9. 7 and 8 are the amphora in the Volo museum, and we don't know where it comes from, except evidently from the sea. (I have a photograph of it made for me in about 1956, when it one of 10 of various kinds and periods recorded by permission of Mr. Theochares.) Your fig. 9 would be good if the toe were all there, but it just happens that the toe is all that easily distinguishes this stage of "Solokh II" from the contemporary Chian. I enclose a photocopy of a group excavated by the Service in Athens years ~~ago~~ ago; it has been kept beside the apotheka of the Library of Hadrian. Observe the characteristic Chian toe of the period; and the other kind, your kind. There seems something deliberate about the similarity between the two kinds of amphoras combined with the easily seen distinction between the toes. So I have tentatively called those with the wrong toe "Para-Chian" (but not yet in any publication).



PARACHIAN?
or PARIAN?

or from
PEFARETHOS?



PARACHIAN

- 2 -

3.02
In ent of 7. IX. 89 & Carlan
filed under G. 12. 15 L. 11 PEPARETHOS

On the shapes. It would be a little better if you had something better as your anchor for the Peparethos type than your fig.s ~~Fig~~ 7-9. 7 and 8 are the amphora in the Volo museum, and we don't know where it comes from, except evidently from the sea. (I have a photograph of it made for me in about 1956, when it one of 10 of various kinds and periods recorded by permission of Mr. Theochares.) Your fig. 9 would be good if the toe were all there, but it just happens that the toe is all that easily distinguishes this stage of "Solokh II" from the contemporary Chian. I enclose a photocopy of a group excavated by the Service in Athens years ~~ago~~ ago; it has been kept beside the apotheka of the Library of Hadrian. Observe the characteristic Chian toe of the period; and the other kind, your kind. There seems something deliberate about the similarity between the two kinds of amphoras combined with the easily seen distinction between the toes. So I have tentatively called those with the wrong toe "Para-Chian" (but not yet in any publication).

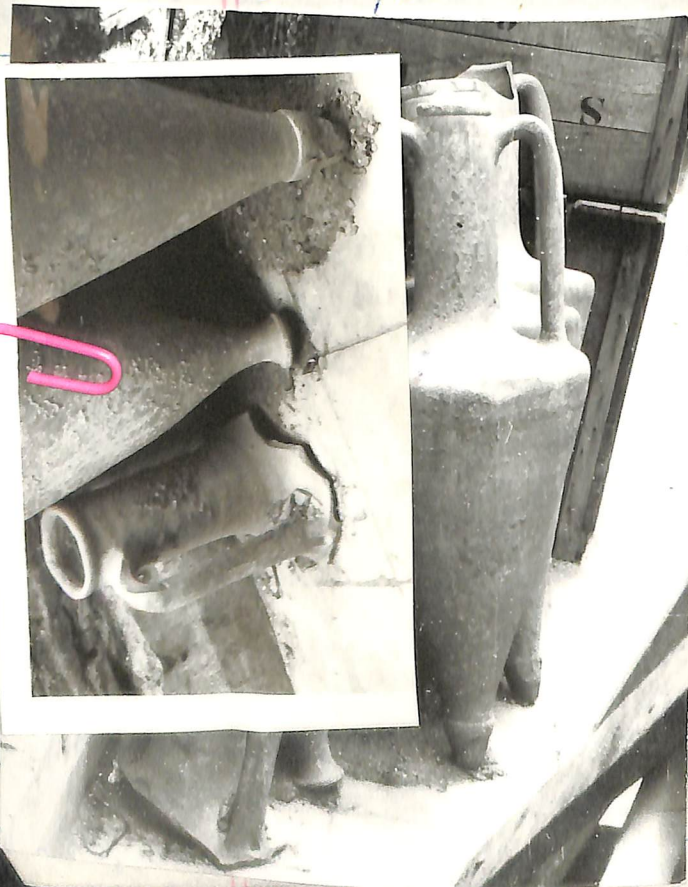
6.11.79

4.04

Chian oil jars?

Ref'd from J. Boardman: The Greek Overseas (1966 paperback), p. 146. In his letter of 10.XII.78, he cites the story of Thales concerning the oil presses in Miletus and Chios ("An. Pol. i 1259a"). He says, too, to look in Roebuck's Greek Coins. The corresp. is under SAMIAN - NOTES FOR SUPPL. ARTICLE; also a photocopy of the passage on Thales.

This would be something to do with PARA-CHIAN gas, with the early, banded, ones, or the 4th cent. ones found with regular Chian in Nore's well (U 13:1) and in the apothecary outside Hadrian's ^{temple} ~~temple~~, see Roll ~~notes~~ 520, 19, 20. (seem to have been something in the nearby Pileas?).



520.20

ca
370?

PSC



4.01b

520'20

TOES

ONE OF CHIAN

ONE NOT

NIKO IV-62



KOULA 11.1979

520.19

Biblidium Adpressum

Group of 4th cent. of which
3 or more are Chian

Nos 638 w. various letters



4.036

KOULA III. 1979

494.36

SS 24871

bed
white

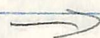
Chian oil jars?

Ref'd from J. Boardman: The Greek Overseas (1966 paperback), p. 146. In his letter of 10.XII.78, he cites the story of Thales concerning the oil presses in Miletos and Chios ("An. Pol. i 1259a"). He says, too, to look in Roebuck's Greek Coins. The corresp. is under SAMIAN - NOTES FOR SUPPL. ARTICLE; also a photocopy of the passage on Thales.

This would be something to do with PARA-CHIAN gas, with the early, banded, ones, or the 4th cent. ones found with regular Chian in Nore's well (U 13:1) and in the apollonia outside. Hadrian's ^{beginning} ~~2nd~~, see Roll ~~2000~~ 520, 19, 20. (seem to have been found together somewhere in the nearby Pledge?).

494.36 (banded)

520.20



ca
370?
PSC

520.19

ca 500 BC.

Early Parachian (loop-painted)
in Cyprus

See Calvet/Y&N, 1978 (offprint), pl. XXII,
5c and 5d, and text, p. 49

5.IX.74

Comment of 27.VIII.74 on Agora deposit U 13 : 1 (see DEPOSITS I for whole text) contains notes on the following classes:

MENDEAN	<u>para-CHIAN</u>
ATTIC	group of ZEEST TYPE 19
CHIAN	Wide-mouthed Jars
CORINTHIAN	THASIAN
LESBIAN	SAMIAN

A series related somehow to the Chian, but not otherwise attributed, will here be called para-Chian. In overall profile it much resembles the contemporary Chian, save that the body ends below in a flaring toe instead of the Chian sheath. In a photograph, such a jar would probably be identified as Chian if the toe were missing; the long neck and arched long handles, the flat angular shoulder and tapering lower body, are all very Chian. (Jars of the two kinds can be seen together in a photograph taken in III.62 at the apotheke of the Library of Hadrian, VG
hellen road, which appears also on other classes of amphorae, for instance
Mendeian, as on PP¹ 701.) I have noticed also a spiral groove on the neck of para-Chian, but not on Chian. Finally, the clay of the new series is more red, less micaceous, and harder, sometimes with pitted surface. It appears that the maker of these jars wished the customer to be reminded of Chian jars, without being necessarily deceived. There is no question which series was the genuine Chian article, since the toe shows plainly enough on the coins of Chios. In U 13 : 1 there were 5 or 6 lower bodies with the flaring toes; a nearly whole jar, lacking the toe; the whole top of a jar which seemed to match one of the bottoms though we had not the joining pieces; and many smaller fragments which may also belong to the para-Chian class. Catalogued were: PP¹ 746, the nearly whole jar, though it is not certain it belongs (shoulder more rounded); PP¹ 746 a and b, the top and matching bottom; PP¹ 747, another bottom with a better-finished toe. It is interesting that also in archaic times there is a series which parallels the Chian while being quite readily distinguishable.

CHIAN and related
PARA - CHIAN (I. 80)

The round-bodied painted Chian
 perhaps not earliest
 in the reg. Chian series

I am bothered by the "Banded Chian" which
 really don't seem to be predecessors of the ^{P 24873-}big Chian
 in the Gutterston Well, since after all there is no clear
 stratigraphical distinction of the two kinds in the same
 well, though banded jars were in lower context (55-
 65) than P 24873 (38-45). Bottom began in
 1955, see notes of 5. VI. 55 on Gutterston Well - The
 shape-distinction ^{for reg. Chian} is in cylindrical neck and rather
projecting rim.

A note of 24. IV. 62 ^{in jar file} suggests that the round-
 bodied loop-decorated jars may be predecessors of this
 lot as distinct from regular Chian. They do have
 the cylindrical neck and the projecting rim. There
 are: 1.) the jar from Thasos (BCH 1961, p. 934, fig. 34);
 2.) the jar from the Louvre (Pollin, pl. 30, D 40)
 3.) " " " Izalynus (?) (Rhodes Mus. # 1375,
 Bull 416.12). To begin the regular Chian
 series, as suggested ~~by~~ e.g. by E. Braun ^{definitely} ~~Hepp~~
 1961, p. 346, under F 79, they should be ^{earlier}
 than the Samyria jar, BSA 53, p. 16, fig. 4, but
 it turns out there is no real evidence that they are.
 The Thasos jar is the only one with a projecting rim

was at first thought to ^{have context of} ~~be~~ earlier 7th; but I have a note Mr. Bernart put it elsewhere at last quarter.

The Louvre jar was acquired from Etienne with SOS jars; but the one illustrated (Pottier, D 39) is apparently a later type, anyhow it matches P 15096 of which deposit (S 21:2) is $\frac{1}{4}$ 6th into 2nd quarter; E. Brann's only mention of this P 15096 is oblique and indicates it is still within 7th cent., but certainly its more "predominant" rim is later. Say then for this too, late 7th

So this type seem to be rather contemporary with Smyrna loop jar than a predecessor.

We have a II devel., with II decoration, similar tocs, must still suggest both somehow Chian, either from different villages or from different contexts?

If this "bandet Chian" series goes on into later 5th cent., have nothing to suggest for it but say Zest No. 6A (also in file with it).

PARA - CHIAN
= CHIAN OIL JARS?

575