

VRG_Folder - 0606

1

This folder photocopied
by Kathy Davis 22. III. 94
for Amphora Project.

CONTENTS OF VG FILE :

KNIDIAN CORPUS

25 février 1950

2

Chère Miss Grace,

Voici très longtemps que nous n'avons pas eu de vos nouvelles. nous espérons tout de même que vous allez bien et que votre travail se poursuit sans difficulté spéciale. J'ai fait une demande de détachement au Centre national de la recherche scientifique, pour reprendre à Athènes même, puis à Thasos et à Délos, nos fameuses auses d'amphores. Le dossier est parti il y a quinze jours, et la discussion ne se fera qu'au mois de Mai. Je ne peux absolument pas prévoir le résultat de ma démarche, mais je voulais de toutes façons vous prévenir que si l'occasion se présente, mon mari demande une mission pour quelques mois - Vous arriveriez, si nos efforts aboutissaient, en Grèce au mois de Septembre. Nous pensons que nous pourrions alors vous y trouver installée encore pour quelque temps.

D'acte fait, mon mari me charge de vous demander si vous comptez venir à Paris en août pour le Congrès International des Etudes classiques ? Vous y participeriez vous-mêmes l'un et l'autre et nous comptons même y faire un rapport sur la nécessité de publier un Corpus ausarium graecum, en insistant sur le caractère international qu'il faudrait nécessairement donner à ce travail. A ce propos, nous voudrions vous mettre en avant et parler avec quelques détails de nos projets de collaboration. Ce serait donc très bien si nous pouvions nous rencontrer à Paris à cette occasion.

J'espère avoir bientôt de vos bonnes nouvelles, chère Mademoiselle. Vous vous envoyons, mon mari et moi, toutes nos amitiés

M. Bon

P.S. Je vous joint un petit plan de ce que je compte dire à ce Congrès.

301

Projet de "Corpus ansarum graecarum"

Résumé de la communication de Mme BON Anne-Marie

Les anses qui ont survécu en grand nombre aux amphores antiques auxquelles elles étaient attachées, constituent un matériel archéologique de première importance quand elles portent un cachet au nom d'un pays et d'un magistrat ou d'un exportateur de ce pays et comportant en outre un dessin. De telles anses ont été trouvées, non seulement en Grèce et dans les îles grecques, mais encore dans toute l'Europe centrale, en Asie mineure, en Egypte, et sur le littoral de la Mer Noire, notamment en Russie du Sud. On en a reconnu l'intérêt pour l'histoire du commerce et pour l'onomastique; elles peuvent même compléter la liste des magistrats d'une cité. Quand elles seront classées chronologiquement, elles serviront à dater leur contexte archéologique.

Pour toutes ces raisons, ces estampilles ont déjà fait l'objet d'un grand nombre d'articles et de plusieurs publications. J'ai moi-même étudié celles de Thasos dans un travail de quelque étendue resté dactylographié. Mais ces articles et ces publications sont fragmentaires et ne s'intéressent qu'aux timbres trouvés dans une région déterminée ou encore examinés d'un certain point de vue. Des séries recherches sur une série particulière, comme celle de Rhodes, sont donc actuellement très longues. Enfin beaucoup d'anses n'ont jamais été publiées.

Il est donc urgent de procéder à cette publication, et c'est à quoi songent actuellement les Ecoles française et américaine d'Athènes, détentrices d'énormes collections inédites. Les travaux de base ont été commençés parallèlement depuis longtemps par une Américaine et par moi-même (avec l'aimable permission de l'Ecole française). Il me semble qu'il faudrait envisager les choses avec hardiesse et prévoir un Corpus ansarum graecarum, qui fournirait au chercheur un instrument de travail comme il en existe déjà pour la céramique proprement dite. Ce corpus serait naturellement un simple répertoire; même ainsi, il est difficile de l'envisager autrement que dans le cadre d'une publication internationale, vu l'abondance du matériel ruy à présenter et sa dispersion actuelle.

Pour obtenir la parfaite symétrie des différentes parties de l'ouvrage, le plan devrait être arrêté après entente entre les principaux inventeurs, c'est-à-dire entre les Ecoles française et américaine. Dès maintenant, l'accord est fait sur le principe suivant: il faudrait classer les anses par lieu d'origine (anses rhodiennes, enidiennes, thasiennes etc.); à l'intérieur de ces grands chapitres interviendraient nécessairement des subdivisions d'après les noms et les symboles, avec l'indication des lieux de trouvailles. Pour le matériel découvert en dehors de ces deux inventeurs, il serait indispensable d'obtenir le concours des archéologues intéressés par ces études et des différents musées.

Il reste alors deux grandes difficultés: La première est d'obtenir

nir la collaboration de l' U R S S, pour les très importantes collections de l'Ermitage comme pour celles qui sont dispersées dans la Russie du Sud. Avant 1939, je n'ai pas pu entrer en communication avec les organismes intéressés. - La seconde est d'ordre financier, cette publication devant nécessairement entraîner de gros frais.

Pour prendre contact avec les pays qu'il est difficile à un particulier d'atteindre, aussi bien que pour la réalisation matérielle de ce corpus, l'aide d'un centre international de coopération intellectuelle comme l' UNESCO s'avère indispensable.

Montpellier, 11 rue Mondollet
23 juil 1950

4

Chère Miss Grace,

Je n'ai reçu aucune nouvelle de vous, malgré ma carte de Noël et ma lettre de Pâques; je veux croire que vous êtes seulement débordée de travail, car j'espère bien que vous n'êtes pas souffrante, ni rentrée brusquement aux Etats-Unis. Il est vrai aussi que j'ai perdu l'adresse de l'École Américaine, mais il me semble que mes lettres me seraient revenues si on ne l'avait pas trouvée.

Malgré mes vœux féministes, il semble (rien n'est encore définitif, ni, par conséquent, officiel) que nous aurons la possibilité de nous rendre enfin en Grèce cet été. Probablement mon mari restera 2 mois (septembre-octobre) et moi toute l'année. Aussi aimerais-je bien savoir vos propres intentions qui sont très importantes pour moi, si vous voulez vraiment mettre sur pied notre publication en commun. Je veux au moins faire photographier tous les documents difficilement accessibles, comme ceux de Delos, et en finir avec les autres thésauruses une bonne fois. Restera la question du financement de la publication... c'est un peu pour cela que je désire faire une communication au Congrès des Etudes Classiques, à Paris, au mois d'août. Y serez-vous vous-même?

Je serais contente de terminer enfin ce travail plusieurs fois interrompu, et l'idée de le faire avec vous me fait particulièrement plaisir.

J'attends bientôt une réponse de vous, chère Miss Grace et je vous envoie, ainsi que mon mari, toutes nos amitiés

Alphonse

July 1, 1950

Mme Antoine Bon
11 Rue Rondelet
Montpellier
France.

Dear Mme Bon :

Thank you for your Easter letter with enclosed
precis of your paper to be read at the International Congress;
also your letter of June 23 just received.

I saw M. Pouilloux last week, and heard first from
him the good news of your expected arrival this summer. It seems
we may be together in Thasos during the visit I hope to make
there in the latter part of August. So, in Athens and in Thasos
we should have plenty of time to discuss handles.

I am afraid I shall not get to Paris for the
Congress. I wish you every success in awakening interest in our
project of a corpus of jar stamps, and hope there may be some
financial help found as a result.

My own situation is this : there is still a small
possibility that I may receive a grant to work in Egypt next
winter, which would mean that I could have the handles in Alexandria
- mostly Rhodian - read and tabulated; and while supervising this
work, I would have time myself to work out pretty thoroughly, I
hope, the Rhodian chronology.

Otherwise, I should still expect to be in this
general area until about Christmas time, possibly for most of
the year 1950-51, depending on available funds.

I am not sure whether you distinguish in your mind
between our proposed joint publication of Delos and Agora finds on
the one hand, and our proposed corpus on the other. But it appears
to me that when we have on file the handles from Delos and Athens,
we have the main basis for a corpus of Knidian stamps, which are
at least two thirds of both our collections. There is still much
tabulating to do of Athenian finds outside the Agora; but I hope
to have finished the Kerameikos lot this summer, also to have
made some headway with the enormous collection in the National
Museum, where we have read, so far, only the Rhodian.

A Rhodian corpus must have as basis the material
from Athens, Rhodes, and Alexandria, and the known whole jars
(mostly found in Cyprus). The Delos Rhodian handles would be an
important addition. For what has been found in Russia, we can

use the publications, faute de mieux. Some of them are very good, of course, but it is hard to tell how much remains unpublished. I wonder if you saw an announcement in one of their periodicals a couple of years ago, according to which Volume III of the Inscriptiones orae septentrionalis Ponti Euxini (which contains stamps - see Klio XX, 1926, pp.303-331, might be expected fairly soon, as part of a scientific five-year plan.

For a Thasian corpus, we are in the same position as regards finds in Russia. My own files are based on not much more than a thousand Thasian handles, including those published in the Hermitage catalogue. I have not reached a point of much duplication as yet, and will be very much interested to see what you have from Thasos itself, and whether we seem to be at all close to having a complete repertory between us.

Beside the large collections mentioned, I have, as you know, a number of smaller lots on file, some very useful for chronology such as those from Corinth, which was virtually uninhabited from about the middle of the second to the middle of the first centuries B.C.

It is very much my wish that we may be able to present our material in combination. The advantages both in economy of production and in the usefulness of the product are so obvious, as I think you agree, that separate publications would constitute almost an irresponsible performance. Money for scholarly purposes is too hard to find, libraries are too stuffed, and scholars' attention is already too much taxed, for us to bring out two such large catalogues, so largely duplicating each other.

It is my suggestion that we make every effort to bring out our material jointly, by categories, as volumes of a corpus. The Knidian stamps of Delos and Athens would include, I believe, very close to every Knidian stamp issued, and we would draw upon so many examples that we could present most types without restoration, chiefly by photographs. At the same time, so large a proportion of both our collections (Delos and Agora) are Knidian, that we could properly request, for such a volume, a substantial part of the money to be applied to the publication of the stamps found in our respective excavations. I know you and Professor Ben were promised, before the war, that the money for the Delos volume of stamps would be applied to a joint publication of Agora and Delos stamps. I have consulted Professor Thompson, our Director here, and he will take up our part of the matter with our publications committee this summer.

As to how the information is to be presented: I am sure you will realize, when you see our evidence, that we have got past the point where it would be proper to limit ourselves to the "simple repertory" modestly proposed in the précis you sent me. Of Knidian stamps, the repertory is already far toward being

established in our files. We know also very largely what supplementary stamps were combined on a single jar, thus what the complete statement was in these cases. The chronology has been well advanced, by study of the files and of handle and jar shapes, together with investigation of dated deposits. Changes in usage can thus be associated with known events. We should expect to make a chronological presentation comparable to that used in publishing large collections of coins issued by a single state, supplemented, as is done with the coins, by full alphabetical indices. Discussions of historical and commercial implications for Delos and Athens might be relegated to journal articles or to a final volume of the corpus.

The book should appear under the joint auspices of the French and American archaeological schools in Athens. There would of course be the question of language to settle; but I think this will not be a difficulty.

It seems to me that a volume on these lines, once published, would be so obviously a good thing that we would have much less difficulty in floating subsequent parts of a corpus. There is also the advantage that in the Knidian category we are much less hampered by not having access to finds in Russia, since few Knidian handles have been found here. This gives us time to wait for the better international understanding which would favor the completion of a corpus.

Some data which may help in estimating the cost in printers' bills of a Knidian corpus: there will probably be between 1400 and 1500 different stamp types to be illustrated. With these at actual size, and some other illustrations that will be desirable - such as the whole jars, when preserved - I think we should reckon on the equivalent of 150 Hesperia plates.

It will be a great advantage to have the Delos material studied this year. You will surely want to use our index, since without it - until you had built up your own - you would find you could not make full readings of half your Knidian stamps, and the effort would be very tedious. We have two copies, and would be glad to lend you one, even without the promise of joint publication, in exchange for photographs of the new types and of the more complete examples of existing types which you will find in Delos.

But I hope we need not consider separate publications. I look toward a collaboration as successful as that which produced the volume on the fortifications of Acrocorinth.

Yours very sincerely,

Virginia Grace

6

July 16, 1950

Dear Mme. Bon,

This is really a postscript to my letter to you of July 1st, which, I realize, does not suggest that an early reply would be as useful as, in fact, it would.

The point is that Homer Thompson leaves for America on August 3, not to return before next spring. He is much interested in our project, has discussed it with various of our officers here, and written at length to Charles Morgan, now Chairman of the Managing Committee of the American School. He and I will need to talk over plans for my work before he leaves.

I realize that you may not ~~have~~ be ready with anything definitive to say, especially since the summer has probably scattered some of those you would want to consult, isolating them in the post-war agaphia you mentioned last year. However, some comment to show your own reaction, also of course any suggestions that may occur to you, would help much toward putting things in shape before Thompson leaves.

I have heard - from Alan Wace, who is now digging in Mycenae - that Georges Daux is to be the new director of your School here. It seems to me that this will be a definitely favorable condition for work in our field. M. Demangel has shown me every possible courtesy, but I think Daux is much more interested in our material, and perhaps also in Franco-American collaboration.

These days one cannot end a discussion of plans without some sort of deo volente.

Yours very sincerely,

[a p.s. on Delos records .g. County P-397]

24 juillet 1950

Chère Mlle Grace,

Vous avez bien fait de me demander une réponse; je ne pensais pas, en effet, vous écrire de nouveau avant quelque temps: d'abord mon détachement au Centre National de la Recherche Scientifique vient tout juste de m'être notifié; ensuite, mes idées sur ce que je pourrais faire ne sont pas encore très nettes. Il faut que je me replonge dans un courant pratiquement abandonné depuis longtemps et que je touche, comme vous le dites vous-même, plusieurs personnes actuellement difficiles à atteindre à cause des vacances. Je prévois des difficultés, et l'absence de M^r Thomson en même temps que le changement de directeur pour l'Ecole Française

ne veut pas simplifier les choses, bien que
j'attende de Daup beaucoup de compréhension
sincère et de sympathie.

Congrès

Voici ce que je peux vous dire : le Congrès
au cours duquel je prendrai la parole fin
août à Paris est justement en faveur de
la collaboration scientifique internationale.
Je tâcherai donc d'y présenter notre futur
travail en commun sous son jour le plus fa-
vorable, tout en restant dans les généralités
(ceci pour une éventuelle subvention). Tant
donné les résultats auxquels vous êtes arrivés
après tant d'années de recherches et le
nombre d'auteurs que vous avez déjà collabo-
rés, il vous semble évident, à moi mari
et à moi, que vous devez prendre la direction
de la publication, ce qui règlera la question
de la langue. Notre apport serait de vous
présenter, tout prêts à être édités, tous les

II

similes amphoriques d'origine thasienne
trouvés dans les fouilles françaises, et de
vous fournir photos et documents concernant
les autres d'autres origines provenant de ces
mêmes fouilles. C'est tout ce que je peux
raisonnablement espérer faire en quelques
mois.

On question of individual binding
plans in Delos -

Quant à la question que vous me faites
pour finir, je l'ai moi-même posée bien
des fois à l'Ecole française en 1934. La majori-
té des anses a été trouvée il y a longtemps,
avant la guerre de 1914, et il n'existe pas
de tableaux indiquant pour chaque groupe
le lieu de trouvaille. Mais en étudiant
patiemment des publications - ou des dossiers
particuliers, on doit pouvoir y glaner pas
mal de renseignements, comme c'est le cas
dans Courby. Je compte m'occuper moi-
même, pendant mon séjour, de ce tra-

7.04

cœur fastidieux, mais indispensable
et, bien entendu, je vous en ferai profi-
ter.

Mon mari a lui-même une mission, qui
lui permettra de commencer le travail avec
moi, mais il doit rependre son enseigne-
ment à Montpellier en Novembre. Nous
croyons tous partir le 9 septembre avec
L. Guia

Je regrette de manquer H. Thomsen, et encore
plus les graves événements de Corée qui
rendent une fois de plus le proche ave-
nir si problématique.

A bientôt chère Miss Grace,
et recevez mes meilleurs souvenirs

Hubert

August 12, 1950

Dear Mrs. Bon:

Thank you very much for your quick response to my letter of July 16. Homer Thompson was very glad to see it. It has increased his optimism with regard to our proposed collaboration.

Before he left (on August 3, as planned) he discussed our plans with Lucy Shoe, the new Chairman of the Publications Committee of the American School of Classical Studies, who is in Athens for part of the summer, and will then make her headquarters in Princeton, where she will edit Hesperia. She is fully in favor of a joint publication of the Knidian stamps from Delos and Athens, to be followed if possible by other such joint publications. Since she will leave about the end of August, and you apparently will not arrive until September, I will mention one or two points she brought up for consultation with you.

She suggests that it might be advantageous to have our book printed in France, since costs are now extremely high in the United States. Collotype plates in Hesperia like those appearing in my "Standard Pottery Containers" had already gone up two years ago to \$20 each, ready-mounted (i.e. with no arrangement to be done by the printer). Halftones (like the illustrations of my first Hesperia article of 1934) are generally considered better, but have been given up with us as far too expensive. If the book is printed in France, perhaps the French School should have the editorial direction? She would like to know whether this suggestion would be welcome, and she would be glad to have some estimate of the cost of printing the book in France. I should state that the other day we counted the Knidian types now on file, and the result was an even 1800, more than I had estimated. I doubt if this will be increased by a great deal: your new types will be balanced by the joining together of numerous incomplete types now counted separately. But I think we should reckon on the equivalent of at least 180 plates, and Miss Shoe and I estimated together that the cost of publishing the Knidian volume in America would probably come close to \$10,000.

Miss Shoe asks whether you would like to have a formal proposal from her, in her official capacity, to present to the person in charge of such matters for the French School. If so, to whom should it be addressed?

It would be a great help to hear something from you on these matters within the next couple of weeks, before Miss Shoe leaves. I am hoping to go to Thasos myself about the end of the month, to stay perhaps a week. M. Demangel thought yesterday that part of the staff would probably still be there at that time.

In any case, I look forward to seeing you and M. Bon very soon.

Yours very sincerely,

9.21
August 14, 1950

ESTIMATE OF COST OF CORPUS OF KNIDIAN STAMPS

I. Actual Publication

The plan is to present the series of Knidian jar stamps not by collections but as a whole, arranged chronologically in a manner comparable to that used in publishing large collections of coins issued by a single state. As with the coins, the volume would be provided with full alphabetical indices and a certain amount of introductory matter and comment. The development of the jar shape and the capacity of the "knidion" at various periods will also appear.

The main basis of this presentation is to be the Knidian stamped jar handles in Delos and Athens. To my knowledge there is no other large collection of Knidian handles. From small collections, those available at the time of composition will also be included.

A recent count of separate types in our Knidian stamp file gave an even 1800. The final total will probably not exceed this, since some of these types are unattested and doubtful (taken from unillustrated publications), and many now fragmentary will be combined when better examples are found. The cancellations will probably balance the new types to be found in examining the Knidian handles in the National Museum in Athens, and in Delos. Study of the handles from the Keraikos excavations this summer gave about 35 new types from about 700 Knidian handles. The rate naturally diminishes.

The volume should include in addition the abbreviated types in use before and after the period of the characteristic and explicitly Knidian stamps. These are relatively few: less than 150 are now on file.

Sixty-odd whole or restored Knidian jars are known, mostly from the Agora excavations. These, or a selection of these, should be illustrated, supplemented by necks of jars or other large fragments to fill out the chronological picture.

On consideration, it appears best to allow for the equivalent of at least 100 Hesperia plates, mostly photographic, but including one or two with line drawings, for profiles, etc.

A table or series of tables will be needed to make clear the interconnection of names appearing together on jars. This is planned as a graph in which the names in the two series (onyms and fabricant) will be written at right angles to each other, with the intersections marked.

I hope it may be possible to avoid in principle the printing in the catalogue of the legends on the stamps. The photographs should usually be adequate without such copies, which could be supplied for the relatively few types of which no clear examples are found in any of our collections.

However, the types will need a certain amount of individual text, including lists of examples, statements of context, etc. The indices will be numerous and long. Site summaries must be included, also bibliography and various discussions,

the most important of which will be that covering the chronological evidence. The text of the Knidian volume is not likely to be less than 300 pages.

The estimate reached by Homer Thompson and Lucy Shoe for the total cost of printing this volume, plates included, was about \$10,000. On Lucy Shoe's suggestion I have inquired of Mme. Bon whether printing in France might reduce the cost.

II. Remaining Preparatory Expenses

The tabulation of the catalogued Agora Knidian (about 7000) and of some smaller but still considerable groups, such as those from the Kerameikos and from Corinth, is complete up to date. The types are illustrated by photographs. However, actual-size prints, such as will be needed for publication, were not made for the index before the war, have not been added systematically as yet to the old types, hence do not exist for about 60 per cent of the types. Where they do exist, they should in many cases be replaced by photographs of more complete examples when found.

The compilation of the Agora index has produced a work of reference where none existed before. From this point I believe that the tabulation of the Delos Knidian handles - probably about 10,000 - can be covered by Mme. Bon's work this coming year 1950-51, for which she has a stipend. It is desirable that she should have the help of a trained assistant, at least at the start. She will need some time to investigate the Delos records for possible context evidence, of which we have some hope. I hope she will give priority to her Knidian handles, in case time does not permit her to finish recording the handles at Delos.

The Knidian at the National Museum remain, a little over 10,000 according to our sorting last summer. With all but a small number of these handles there is absolutely no documentation to consider. I should delegate most of the reading and tabulation, also much of the photographic routine. The work of supervision required of me personally would go mostly toward the better establishment and illustration of the stamp types of our repertory. Note that there is a second copy of the Knidian file, so that tabulation in Delos and Athens could proceed at the same time.

Tabulation, synthesis, and preparation of plates and manuscript would, I hope, be finished in two years. For this result, considerable assistance will be needed. In addition to the work just mentioned as for delegation, one must reckon on a good deal of typing and many manual chores (sorting, fetching and carrying, writing numbers, etc.). For the research assistance - reading, tabulating, some photography, and miscellaneous jobs - and for part of the manual chores, two trained persons I have in mind are Maria Savvastianou and Christos Andreades. Miss Savvastianou is a university graduate and a teacher in a private school who receives at present about 15,500,000 drachmas a year for 25 teaching hours per week during nine months of the year; an increase in salary is expected to correspond with increases already given in the public schools. She has been working with me for about 20 hours a week after hours for over a year. She has become very adept at reading difficult Knidian stamps, and has gained a good understanding of the scope and aims of our work. She has a fair knowledge of English. For a full-time job we cannot offer her less than 18,000,000 (\$1200) with a paid vacation. Andreades has also gone through the

-3-

University in Classics, but has still a couple of examinations in his way. For us, a good part of his work would be straight routine, such as writing numbers. However, he could certainly learn to use the Knidian index: he already makes accurate readings of the (easier) Rhodian stamps. I suggest offering him 12,000,000 (\$800) per year, with paid vacation, and with the proviso that he will not be expected to live away from his parents' house without further compensation. The chief item beyond this is that of typing, for which I think we must allow at least \$500 a year. In estimating the work of these assistants I have intended to allow some help - certainly not full time - to be supplied to Mrs. Ben, an investment which I believe would have an ample return.

A part of my work which it would be very desirable to delegate, but which I have not budgetted because it would certainly be expensive, is the entire business of procuring an adequate actual-size print (or pair of duplicates) for every type. The arduous part of the task for me is not in taking the pictures, which I do only for items outside the Agora, and for which I am now pretty well organized and equipped. It is in the paper work involved, the selection for enlargement, the checking of enlargements, the pressure that has to be exerted on overworked darkroom facilities in competition with many other projects, all desirable. As things are, I shall probably worry along, but I should be more sanguine of an early and successful finish if I could turn over this part of the job.

Summary for two years

research and clerical assistance	\$5000
photographic supplies and processing	1200
miscellaneous supplies	500
maintenance	5000

	\$11,700

In this account, it is assumed that the Agora can supply quarters, heat in winter, and the loan of some equipment, i.e. the cost of these to the School is not listed. On the item "maintenance", I think the stipend should remain equal to that of other single members of the American staff. At present one cannot expect this to cover transportation.

The proposed total expense to the School for what remains of the assembling of data on Knidian stamps and jars, plus the printers' bills, is thus estimated as something under \$22,000.

Leaving out ^{non-}Agora material would not, in my opinion, save us more than a possible two or three thousand dollars. The difference in the value of the book would be very great.

Tally of Korean Master Cards

10.VIII.50

1 A-D	596 (ME)
2 E-M	574 (XN)
3 N-X Alter-branches	390 (XA)
4 end of devices	142 (vg)
5 titles	98 (vg)
	<u>1800</u>

$\frac{35}{700} = 5\%$
 20
 (mixed 1170 is in 1946 state of file)
 142000.50
 out of ca. 700 kind. handles at the Korean, I count among them photographed only about 35 new type (though many better examples).

12.VIII.50

Hasty
 tally of
 LK and
 EK type
 on file
 say with
 over 100

Tally of actual size vs. small enlargements

Counted drawn 3 (leaf names, leaf devices).

actual size : 156
 not : 240

240
 156
 $\frac{240}{156} = 1.54$

$\frac{240}{156} = 1.54$
 $\frac{396}{240} = 1.65$
 $\frac{240}{237.6} = 1.01$
 240

i.e. 60% of the ^{types all} ~~files~~ on file are not illustrated at actual size.

(In this count, I counted Wagner ^{for '31-'32} enlargements about half each way.) (The examples are often not very good, and the enlargements do not show the handles. However they are good pictures.)

Hence we will need enlargements of at least
 (over)

1000 types, presumably in duplicate
 (much easier in case of loss, damage, etc.)
 to take care of types already on file.
 Counting improvements (better examples
 chiefly) probably 1400. $\times 2 = 2800$ ^{prints}
 @ 30¢ = \$868. $\frac{2800}{100} \times 30 = 8400$
 \$868.00

A good many of these can be enlarged
~~from~~ from Agora negatives. However,
~~many~~ new ones will have to be taken,
 chiefly of better examples, but also to
 replace pictures taken in 1933, etc.

For film developing, printing, ^(incl. negs)
 for picture of stamps.
 at least \$1000.

Printing 180 plates at \$25
 $\frac{25}{180} = 900$
 $\frac{360}{180} = 360$
 \$4500.

12. VIII. 58

Figuring non-phot. costs of Kridin corpus.

Reading and tabulating

10 000 Krid. in Nat. Mus.

(10 000 " " Delos? by Mrs. Bon-
entley?)

Will certainly need full tin of Miss E.
if available. She ought to get a good
raise, if Allen College boys get 10,000 an hour.
Say 60,000 for an 8-hr. day?

26
360 000
120 000
1,560,000

or \$100 a month. (what a
general get)

Ten months, \$1000

What I really need is a photographic
assistant, to take full responsibility of seeing
that there is a full-size enlargement for every
type. Film negs & prints. Check enlargements
check negs to be enlarged.

14 Oct 50
(Saturday)

Chère bien face.

bon, moi venus de Thasos, non sans
difficulté, à cause de la fièvre des oriateurs. Voulez-vous
nous téléphoner demain dimanche, dans la mati-
née ou vers midi et jusque vers 2 heures, pour
que nous puissions fixer un moment pour vous
voir avant que je reparte pour la Péloponnèse?
Nous pourrions peut-être nous rencontrer demain
à la fin de l'après-midi.

Avec toute nos amitiés.

A. B.

They had tea with
me Sunday 15
and arranged to
come again Tuesday
and ILC

13.01
 suggested
 10/18/50

October 18, 1950

Professor H.A. Thompson
 Institute for Advanced Study
 Princeton, N.J.
 U. S. A.

Dear Homer :

Last night Jack and the Bons and I had a considerable discussion on our proposed joint publications. M. Bon made a suggestion which it seems to me might solve our chief difficulties, and that is that we exchange material by mutual courtesies and without a formal collaboration between the Schools. That is, that they turn over their Knidian material to the Agora Knidian volume, where there will be a polite acknowledgement of it, and that we turn over our Thasian material to the amphora volume of the Etudes Thasiennes, in the same way.

The number of Knidian types in Delos - or in the world - not already on file at the Agora will make a small addition to the necessary Agora plates, perhaps raising the total from 160 to 180, quite within what is considered, as Lucy T. points out, a normal addition, when publishing Agora material, of outside illustrations of related material. Of course it will not be twenty separate plates, but types added here and there filling out sequences in their proper places, which may possibly increase the total by the amount suggested. I presume there would not be any objection to our illustrating also some of the Agora types with photographs of good sharp examples from elsewhere when the Agora examples are illegible, half broken away, etc.

Although the number of our Thasian examples, about 450, is a great deal smaller than the number of their Knidian examples, there are few duplicates among the Thasian, so that taking in our Thasian handles will probably increase Mme. Bon's plates by 30 or 40. This may not appear an unwarrantable additional expense to the French School, however, since after all they all came from Thasos to start with, and have a proper place in the Etudes Thasiennes.

In this way, each School saves the cost of one volume, at the cost of the few additional plates which will double the value of at least the Knidian volume. It is not necessary to argue the value of items which complete a set, so that it can be assembled

160
 .08
 add the 12.80
 plus
 13.88
 type from
 add 12.80
 plus
 13.88
 in Athens

in one place. As you know, I believe that the Delos and Athenian collections together will give us very close to every type in the Knidian repertory. It should not be forgotten that the Agora Knidian will need a volume by itself in any case.

Mme. Bon has not the data to construct a chronology of Thasian stamps, and quite rightly prefers to base her arrangement of plates, etc., on something in print rather than word of mouth. She would like me to publish a study with my chronological classification and the evidence it is based on. It is preferable that this should come out soon, as the French School rather presses to have the Thasos handles published. I suggest that my study appear as a report on the Pnyx handles, to be published in the same volume with the red figure from the Pnyx, which is so largely the basis for the dating of early Thasian stamps. Here again we would need to use a certain amount of supplementary material, largely Agora Thasian handles from good context. I should use whatever still seemed valuable in my manuscript Study of Thasian Amphora Stamps written in the early part of the war, a small part of which came out in AJA 1946.

Would you endorse this plan?

The Bons stayed in Thasos two weeks, where M. Bon photographed 800 Thasian handles. The stamps seem to have come out all right, so far as one can tell before enlargements are made. He still hopes to come back next summer, and do the necessary photography in Delos. The French School provides him with film and pays for the prints.

Jack and Lucy have both read this letter, and give the plan their approval.

Yours sincerely,

Virginia R. Grace

*Copies to: CHM, Bons, Agora file,
Museum Dario?*

VRG/ak

13.03

(1 + 5)

13.04

Oct. 18, 1950

V:

I should think it was quite proper to address your letter to Homer if you send a copy to Charlie at the same time. I assume you would also write a note to Charlie acknowledging his letter of Oct 12.

He
(on Oct. 18, 1950,
morning)

and I had a considerable discussion on M. Bon made a suggestion which it seems to me, and that is that we exchange material in formal collaboration between the Schools. Knidian material to the Agora Knidian acknowledgement of it, and that we to the amphora volume of the Etudes Thasiennes, this should come out soon, as the French School in Delos - or in the world - not already on necessary Agora addition to the plates, perhaps raising the thin what is considered, as Lucy T. points out, Agora material, of outside illustrations of all not be twenty separate plates, but types added here and there filling out sequences in their proper places, which may possibly increase the total by the amount suggested. I presume there would not be any objection to our illustrating also some of the Agora types with ~~with~~ photographs of good sharp examples from elsewhere when the Agora examples are illegible, half broken away, etc.

Although the number of our Thasian examples, about 450, is a great deal smaller than the number of their Knidian examples, there are few duplicates among the Thasian, so that taking in our Thasian handles will probably increase ^{may} M^{me}. Bon's plates by 30 or 40. This ~~probably will~~ not appear an unwarrantable additional expense to the French School, however, since after all they all came from Thasos to start with, and have a proper place in the Etudes Thasiennes.

In this way, each School saves the cost of one volume, at the cost of the few additional plates which will double the value of ^{at least the Knidian volume.} ~~the volumes they do publish.~~

V:

I should think it was quite proper to address your letter to Horner if you send a copy to Charlie at the same time. I assume you would also write a note to Charlie acknowledging his letter of Oct 12.



(on Oct. 18, 1950,
evening)

Professor H. A. Thompson
Institute for Advanced Study (draught)
Princeton, N. J.

(1 + 5) 13.04
Oct. 18, 1950

Dear Homer:

Last night Jack and the Bons and I had a considerable discussion on our proposed joint publications. M. Bon made a suggestion which it seems to me might solve our chief difficulties, and that is that we exchange material by mutual courtesies and without a formal collaboration between the Schools. That is, that they turn over their Knidian material to the Agora Knidian volume, where there will be a polite acknowledgement of it, and that we turn over ~~the~~ our Thasian material to the amphora volume of the Etudes Thasiennes, in the same way.

The number of Knidian types in Delos - or in the world - not already on file at the Agora will make a small addition to the ^{necessary Agora} plates, perhaps raising the total ~~to~~ from 160 to 180, quite within what is considered, as Lucy T. points out, a normal addition, when publishing Agora material, of outside illustrations of related material. Of course it will not be twenty separate plates, but types added here and there filling out sequences in their proper places, which may possibly increase the total by the amount suggested. I presume there would not be any objection to our illustrating also some of the Agora types with ~~with~~ photographs of good sharp examples from elsewhere when the Agora examples are illegible, half broken away, etc.

Although the number of our Thasian examples, about 450, is a great deal smaller than the number of their Knidian examples, there are few duplicates among the Thasian, so that taking in our Thasian handles will probably increase Mme. Bon's ^{may} plates by 30 or 40. This ~~probably will~~ not appear an unwarrantable additional expense to the French School, however, since after all they all came from Thasos to start with, and have a proper place in the Etudes Thasiennes.

In this way, each School saves the cost of one volume, at the cost of the few additional plates which will double the value of ^{at least the Knidian volume.} the ~~volumes~~ they do publish.

Through the Hellenistic period, and a probable aristocratic example of the 2nd century AD. ^{earlier} Tarsus, fourth century. It is filled in for other sites, as well as a fragment of a Cypriot bronze to China. I do not say this paper, because I think the material is too good for the purposes of time. I will be able to give to it during the next month and a half.

Mme. Bon has not the data to construct a chronology of Thasian stamps, and quite ~~rightly prefers~~ rightly prefers to base her arrangement of plates, etc., on something in print rather than word of mouth. She would like me to publish a study with my chronological classification and the evidence it is based on. It is preferable that this should come out soon, as the French School rather presses to have the Thasos handles published. I suggest that my study appear as a report on the Pnyx handles, to be published in the same volume with the red figure from the Pnyx, which is so largely the basis for the dating of early Thasian stamps. Here again we would need to use a certain amount of supplementary material, largely Agora Thasian handles from good context. I should use whatever still seemed valuable in my manuscript Study of Thasian Amphora Stamps written in the early part of the war, a small part of which came out in AJA 1946.

Would you endorse this plan?

~~MYREX~~ The Bons stayed in Thasos two weeks, where M. Bon photographed 800 Thasian handles. The stamps seem to have ^{come} out all right, so far as one can tell before enlargements are made. He still hopes to come back next summer, and do the necessary photography in Delos. The French School provides him with film and pays for the prints.

I am rather planning to go to America in December, in which case I shall probably go to Toronto. ^{If you} Would ~~you~~ like me to offer ^{a paper, I would suggest} twenty minutes on the Agora collection of wine jars; with the Chian series picked out as important and illustrative. ^{As you know, we have many 5th century Chians, a series} Have just been with Dick to see Sophokles. He looks very well and young, obviously pleased with the results of his operation.

Jack and Lucy
please their approval.

Oct. 18

V:

Might I see a copy of your letter to Charlie, containing the proposal which the Trustees turned down on Oct 9?

ack

Copies to: HAT
 CHM
 R. St.
 Mr. Bon
 Dams
 Guggenheim
 Agora file

Summary: M. S.
 X. T.
 A. C. O. C.
 P. B. G. - 1949 - 1950
 M. S.

Athens, October 23, 1950

RESEARCH ON WINE JARS AND THEIR STAMPS

STATEMENT OF GENERAL PROGRESS

March 1949 - October 1950

For forwarding the research at this stage, the chief advantages of being in Greece have seemed to be 1) access to quantities of primary material and records, 2) availability of educated assistants with a knowledge of Greek, and 3) presence of scholars working on lines parallel with my own investigations. The fact that I have been able to exploit these advantages as extensively as I have is due largely to the generous support of a Fulbright research grant for the year October 1, 1949, through September 30, 1950, which covered the salaries of assistants and the high photographic costs as well as my own maintenance and various necessary incidentals.

Recording and tabulation

We have completed the tabulation of certain large blocks of material, chosen (out of the mass still to be covered) with an eye to those that ought to bring in, for time spent, the most return toward building the chronology. For this purpose, one must not miss anything found in context which indicates a date. But one must also fill out the repertories as quickly as possible so as to get the pattern of the whole; otherwise individual indications on date are misleading, and general statements of any kind lack authority. The stamped handles and wine jars found in the Athenian Agora form the single most profitable collection: not only is it large, choice, and uniquely documented, but everything is ready washed, numbered, photographed and accessible. About 5000 stamped handles and many whole jars have been added to the collection since I was last on the Agora staff, in 1936. Ninety per cent of these are now on file, and the readings made from the older finds in the same classes have been checked and revised. The remainder, which belong to small classes requiring special attention, are gradually being added. Athens, Kerameikos, finds of the prewar German excavations: about 1200 handles sorted, the Knidian and Rhodian (most of the collection) put on file, with photographs of new

types and superior examples. Athens, Epigraphical Museum, about 1400 handles sorted, the Rhodian (about 2000) put on file. Rhodes museum: records made, including about 500 photographs, of the Rhodian jars from near the village of Villanova, thought to be the product of an ancient amphora factory in the vicinity. The collection, remarkable in various ways, includes samples with the same signature marked for almost every month of a period of more than two years. The series of photographs, capacity measurements, etc., provide the basis for a valuable study supplementing the twenty-five-year-old publication of this unique group. Corinth: recent finds from the American excavations added to the file. Cyprus: recent finds from the American excavations at Curium added to the file; also half a dozen whole stamped jars seen in various parts of the island. Thasos: this year's finds from the French excavations (112 handles, mostly Thasian) recorded, during a holiday.

Our index, chiefly the Rhodian section, has further been supplemented by a number of records made before the war by Mrs. Kirsopp Lake and by myself, also from several large publications important for various reasons, and finally from correspondence, such as bulletins on his large collection from Mr. L.A. Benachi of Alexandria, and letters reporting finds in current excavations in Susa and Gordion. The Lake records consist of readings (we have photostatic copies) of about 1100 handles from the more recent excavations at Samaria. My own prewar records from outside Athens covered the material available in 1937-40 in Antioch, Tarsus, Cyprus, Corinth, Istanbul (mostly from the American excavations at Troy), plus a sampling of 600 from the enormous collection in Alexandria; these records, which include photographs of most items, were mostly made on a Guggenheim fellowship held in 1938-39. The chief publications drawn from during the past year were those covering stamped handles found in Pergamon and Carthage, (both finding-places which give useful indications on the date of the finds), and the catalogue of the stamps in the Hermitage Museum, finds from South Russia near the Black Sea, carefully presented with facsimiles as well as a few photographs. The usefulness of the record of a stamped handle depends, much more than has been realized in the past, on the extent to which it enables the investigator to visualize the handle and the stamp.

Most of the reading and tabulation, as well as much mechanical routine, have been carried out by three part-time assistants, recent students in Classics at Athens University, two of whom are now teachers in private secondary schools, while the third has still to finish his examinations. Secretarial services, chiefly for typing file cards, were mostly provided by a share in the time of the skilled secretary of the Agora Excavations. The total time put

in on my research by these four workers from March 9, 1949 to September 30, 1950 was about 5500 hours. Very much of the accomplishment above outlined is due to their interest in the work, and to the particular training and endowments which have enabled them to do a careful and intelligent job and make light of difficulties. The division of time was roughly as follows: manual chores, 15%; typing, 25%; reading, tabulating, and other research jobs, 60%.

The planning, organizing and supervising have taken much time, especially since not only were the young people without experience of the material and methods involved, but the job itself has had to proceed at many points by breaking ground. We had to work out in practice a feasible method of dealing with the huge collection of the Epigraphical Museum, found in a heap in a dark corner. Again, time was lost in trial and error before we arrived, for instance, at a tolerably accurate technique in taking capacity measurements of sound jars. A very great deal of time is absorbed by matters connected with photography. The photographs are essential, not only for the composition of plates for publication, but also for identification of types during tabulation.

On the present state of the repertories, it may be remarked that although a large proportion of Rhodian, Thasian and miscellaneous stamps examined at this point still provide new types, in the Knidian category the percentage of such proved, in the case of the Kerameikos collection, to have been reduced to about 5 percent. Unless Delos turns out to have been importing Knidian stamped jars at a time when they were not coming to Athens, we probably have nearly the whole series.

Analyses, exposition

The machine is still under construction, and to put questions to it now is to receive unnecessarily vague and tentative answers, at much cost of time. Not only are there data to be added to the files, but there is obvious present need for systematic study on various lines, particularly of the name series in the various categories, and the overlapping interconnection between pairs of names associated on single jars.

However, I have investigated in the files a good many names, and particularly groups of names found together, for excavators and others who were working from other evidence on the dates of the deposits in which the handles were found. Such groups of stamps resemble hoards of coins

in their usefulness in building up chronology. Also it is desirable to advance opinions which may be challenged by others before too much has become set on either side. Analyses of the groups of handles, with comments, have been typed for the inquirers, and their reactions have been attached to the carbon copies kept as part of the evidence for the stamp chronology.

A series of such analyses, some less formal than others, have been used in working out the chronological basis of a classification of the wine jars, stamped and unstamped, found in the Agora excavations. The physical arrangement, by types and in chronological sequences, of several hundred of these jars, dating from about 500 B.C. to the late Roman period, has been the most considerable piece of exposition I have attempted during this period. It remains a sketch so far. Time has not been found for instance to study the many fragments, found in datable context in the Agora, of jars of the various types. But it gives the perspective needed for the fuller studies to follow. One of the first of these will concern the series of Chian jars, the development of which can be followed from the time of Perikles to the time of Hadrian, five and a half centuries during which many pleasant comments were written down by Greek and Roman authors about the contents of these jars, which the state of Chios regularly illustrated on its coins.

Preparations for publication

A large majority of the stamped handles and jars found in the Athenian Agora are Knidian. It is estimated that the stamps on these 7000 or so Knidian handles include examples of 85 to 90 per cent of the whole series of Knidian stamps issued. The other collections containing Knidian handles in quantity are that of the National Museum, Athens (mostly in the Epigraphical section), which was sorted out by us in the summer of 1949, and that assembled in Delos from the French excavations. The study and publication of the latter is the responsibility and prerogative of the French School in Athens. But until the material is available, no definitive publication of Knidian stamps can be made. It was therefore very good news to hear early last summer that Professor and Mme Bon of Montpellier were coming to study the stamped handles found by the French in Thasos and Delos, and hoped that we might manage some sort of joint publication. By correspondence, and, since their arrival in September, by discussions in which we were assisted by Professor Caskey and others, we have gone over ways and means. The most practical solution now seems to us that the Agora Thasian

15.05

stamps, with Agora readings and photographs, shall appear in the amphora volume of the Etudes Thasiennes, while the Delos Knidian, processed by the Bons using the Agora Knidian index, will be collated into the Agora Knidian volume, with the few new types filling out our repertoires. As Mme Bon has no data on which to base a chronology, the Thasian volume is to be preceded by a study of Thasian stamps by myself, outlining the chronology and giving the evidence. I have proposed that this study be embodied in a report on the stamped handles from the Pnyx, and published in the same volume with the Pnyx red figure, which is largely the basis for the Thasian chronology.

The Director of the American School has given his approval to the above proposal. Professor Daux, presumably soon to be director of the French School, has approved for us the principle of collaboration, but has not been present in Athens to be consulted on the specific plan.

It is our hope and belief that, these volumes once published, we will be in a position to find funds for the Rhodian and other categories.

Page 4

415000 shells
401250 hours
31 feet, now
[15.06]
Oct. 24, 1950

Dear Charlie:

I have mailed to you with separate cover a report summing up the work I have been doing since I came to Guam in the spring of 1949, together with a brief statement of money spent.

Every part of the work ^{has been} directed toward assembling the body of knowledge needed to exploit ^{adequately} ~~properly~~ in publication the "costly and invaluable" evidence gathered at the Agaña.

at the same time, ~~the making~~
~~and indexing of about 5000 stuffed~~
~~bundles and jars have been carried~~
~~out, and a classification has been~~
~~made of the wine jars preserved complete.~~
~~that is to say, the "first things" have~~
~~been done, the making and labeling of~~

Athens, October 23, 1950

Dear Homer:

I hope the enclosed arrive in time to be read before the Executive Committee meeting.

Miss Byrne called me up the other day - well after the deadline - to encourage me to apply again for Egypt. Dr. Ryan had told her that Judge Brinton had strongly recommended my project to him personally; I was advised to ask for association with the American Research Council in Cairo. The Judge wrote me that he understood from Dr. Ryan that the reason my application had been denied this time was that I had already had two Fulbright grants, an impression which I suppose may easily have got around.

I have been having a spell of arthritis or whatever, which has delayed things.

Yours,

909. 16

CWM.

HAT.

DAVE.

16.01

October 28, 1950

Mr. Henry Allen Moe
John Simon Guggenheim Memorial Foundation
551 Fifth Avenue
New York 17, N. Y., U.S.A.

Dear Mr. Moe:

It has been pleasant to have your personal acknowledgement of offprints, and so to feel a continued interest on the part of the Foundation in one's career.

I am writing now to ask whether you would like to have me apply to you for a fellowship for next year, in view of the fact that, with good luck, it should be to compose a book.

The book is to be a comprehensive study of Knidian stamped jars. In the format of Hesperia, if that is decided upon, it will need about 180 plates, in which the stamps will be presented in chronological groups, somewhat as is done in publishing large collections of coins issued by a single state. A few of the plates will be needed to show the shapes of the jars. It has been estimated that the text, including indices, etc., may amount to 300 pages.

The main basis of the presentation is to be the Knidian stamped jars and jar handles found in Athens and in Delos, which was an Athenian market. There appear to be no large collections elsewhere of this category.

What makes it finally possible for the publication to be planned is that the handles in Delos will be studied during the coming spring and summer, and filed in a uniform fashion with our own, and will probably be available to be included in our book. Mme. A. Bon, to whom the publication of these handles has long been assigned by the French School which excavated them, is now in Greece. It is obviously desirable that our material be pooled. We are therefore willing to make an exchange, so that the Agora Thasian stamps, relatively few, would be published with the larger number in the Etudes Thasiennes, while the Delos Knidian would be included in the Agora Knidian volume. There will be an overlapping of types of at least 85% in the Knidian from Athens and Delos, which would make it folly to publish these very large collections separately.

My joint program with Mme. Bon involves my preparing for publication, probably in Hesperia, my chronology of Thasian stamps with the evidence on which it is based. The excavations at Thasos have provided little evidence for dating pottery, hence Mme. Bon needs our information if she is to present her extensive and very interesting material in a logical and useful way; and she wants to be able to cite something in print. The Thasos publication is very long overdue, and there is pressure for early production. My study

of the chronology was mostly done ten years ago. To be more than tentative, it needed to take account of the large number of different types in Mme. Bon's material. The checking of my theories against these data can now be done, and the study published.

The joint scheme as above outlined has been approved by Professor J.L. Caskey, Director of the American School of Classical Studies in Athens. Professor Georges Daux, incoming Director of the French School in Athens, has not been here to be consulted, but had already given his general endorsement of our collaboration. I think that funds would eventually be found to pay the printers' bills, since the volumes will come in the regular series contemplated by the French and American Schools to present their finds. This holds for the Thasian study, which can be embodied in a report on the handles from the Pnyx excavations, where a remarkable number of early Thasian stamps were found.

Apart from preparing the Thasian manuscript, I hope this year to get through certain further pieces of research on the Knidian category. The Agora Knidian, about 7000, are on file, also much of the dating evidence. I need now to make a systematic study of the Knidian names and their interconnections, to complete as far as possible the study of Agora contexts of discovery, and to supervise the tabulation of the Knidian handles, about 12,000, in the National Museum in Athens. Owing originally to a Guggenheim fellowship, the Knidian index exists in duplicate, so that Mme. Bon and a Greek assistant whom I have trained during the past year and a half could work at the same time, one in Delos, the other in Athens. The repertory of Knidian stamp types in our index is so nearly complete that tabulation goes very quickly.

If I can carry out this program as proposed, then in 1951-1952 I would be actually putting together the Knidian volume. I could give you further detail about the book if you are interested. In my opinion it will be quite a major product; and part of its influence will be to increase my own productivity.

This year's program depends on whether or not money is found to support it. Reference to Professor Charles H. Morgan at Amherst, Chairman of the Managing Committee of the School, or to Professor Homer A. Thompson at the Institute for Advanced Study, will probably give you the answer to that question, since some decision was to have been taken this week. For the year ending September 30, 1950, I had a senior research grant under the Fulbright Act, but renewal was denied this year; apparently they think those connected with the Agora have been out here too much to serve their purposes further.

I plan to come to America before long, perhaps before Christmas.

Yours very sincerely,

Virginia R. Grace

STAMPED HANDLES IN DELOS

THIS COPY IN KNIDIAN
20 Nov. 1950 CBPJS

16.03

During November 10-14, 1950, Mme. Bon and I sorted and counted the stamped handles in Delos. We found most of them in cases and large drawers along the wall of the south storeroom of the museum; one case was in the north storeroom (court), and a few lots of handles (from recent excavations) were in baskets, on work benches, etc. Most of the cases were marked with the place and/or date of the excavations from which the handles came, so it seemed necessary to keep the groups together for the present. (Most of the handles are not numbered). About a quarter of the cases were numbered, and we gave numbers to the others, listing the assorted contents on four tally sheets, of which we now each have a copy. The total number of cases was 68.

Mme. Bon copied the Thasian stamps, since they were few and scattered, and I took notes on such items of all categories as seemed of particular interest in passing. Andreades was with us, and was a great help in sorting and counting, and in shifting and marking the cases. The museum guards were also very helpful. The caretaker of the French excavation house and his family made us very comfortable during our four-day stay at the house.

The assortment of handles is as follows :

Knidian	3691	(62 per cent minus)
Rhodian	1330	(22 per cent plus)
Latin, etc.	506	
Thasian	35	
Coan (double)	34	
lagynoi	25	
Parian	8	
Pontic	4	
Miscellaneous	331	
	5964	altogether

The total is much less than had been expected, and the percentage of Knidian is also rather less than had been supposed. I noticed a good many later 2nd century BC Rhodian, of a period when they are almost lacking in Athens. The "Latin" figure includes all fragments of Roman period jars with stamps on rims, though some of these are in Greek letters. The miscellaneous figure includes at least 25 which are probably Hellenistic Chian.

Among the Knidian and Rhodian were some fine examples of known types, also five pairs of joining handles in these two categories, bearing four supplementary pairs of stamps not previously known in combination and one unexpected identical pair. Recognized in passing, among the Knidian, were one or two examples of new types, and many examples of known types. The Thasian included two completely preserved handles of unusual fabric bearing a name new to our records of Thasian stamps.

November 29, 1950

Dear Homer:

I am hoping now to get to America shortly before Christmas, and to Toronto for the meetings, where, however, I shall not be offering a paper. I shall probably be giving you all a call in Princeton on the way to Philadelphia after arrival.

Mme. Bon needs publication prints of our Thasian handles. Lists are being prepared, and some rephotographing will be necessary, chiefly of the earlier pictures. I have talked with Lucy and Alison about this, and this seems to be the right season at least for the printing.

We are doing a job on the illustration of the Knidian types, going through the lists of examples, and making note of ~~any~~ the best, ^{if it is} if it is definitely superior to what is now attached to the card. We need to have prints of the superior examples attached to the cards, to avoid doing unnecessary photography outside the Agora, as well as to help in the reading of fragmentary new stamps.

Betty Lyding is planning to have a try at working up our Latin stamps for her School paper, and perhaps for publication if you agree. There are something under 150 even if one counts all the jars marked SPE separately. A survey article on Latin stamps would be useful, and she is quite interested in the idea of writing one. As I imagine you know, she has already taken her degree. Jack and Gene and Lucy think it a good idea. I suppose the publication would come out as an article in Hesperia. I should be glad to have her take in ~~the~~ the material from Corinth also, or anything else I have. She will be wanting to get in touch with Mr. West in Princeton. I have been assuming that he is not getting up an article himself; I shall try to see him in Princeton.

As ever,

16 décembre 1950

Chère Miss Grace,

Je tiens à vous remercier de la soirée ~~par~~ si vivante et si agréable que nous avons passée ensemble hier. On sentait tellement que vous étiez l'objet de la sympathie générale que l'atmosphère en était toute réchauffée et familiale.

Et encore une fois bon voyage, bon repos, et bon séjour aux Etats-Unis.

Nous espérons tous que les pénibles moments actuels ne vont pas durer et que vous échapperez, avec le monde

enfer, à une guerre qui ne peut aboutir
qu'à une catastrophe.

Vous reviendrez à la fin de l'hiver. Alors
vous aurez fier le petit air finissant,
et vos amis entoureront, pour vous
saluer, la charmay de l'hirondelle!

Je vous apporte quelques chocolats.
Ils sont très légers et d'ailleurs vous
les croquerez pendant le voyage.

À bientôt. Et croyez à toute
mon amitié

Att Bon

Athènes, 12 Février 1957

19.01

Chère Miss Grace,

J'espère que vous avez fait
un bon voyage, et que vous êtes tout
à fait satisfaite de votre court sé-
jour aux Etats-Unis.

Je me réjouis de vous revoir
bientôt; j'ai commencé mon cata-
logue et j'ai naturellement bien
des choses à vous demander.

Les Daux ne rentrent qu'à la
fin du mois, à cause des importants
réparations qu'on est obligé de faire
à leur maison. Il n'y a rien de

bien neuf à l'école française depuis
votre départ.

Bonne arrivée douce ; et à
bientôt

Ellen

PRICES IN CASE PRINTING CORPUS
23. II. 51 ANSARUM
IN FRANCE

mm. Bon

1.) 5,000 francs for a Plate (Hesper
by "simili-gravure" (ms. B.
m. Bon.

193 OXOICOR J
aile ←
tourné vers le bas
o lunaire Δαγόρας renversé

nothing we know about
"simili-gravure" is.

6. III. 51

Cf. H. Focillon, Peintures Romaines
— this type is simili-gravure.
Paper[⊗] is extra. Prices may be
raised.

Th. 193 ; contexte du TV^o 5.
SS.

194 Arrangement of
mm. Bon's
catalogue

2.) "en phototypie" ("like the
plates of Miss Gami"):
series of 8 plates for 35,000 fr.

⊗ Paper is about 200 francs per
kilo, which makes 100 plates

Prix of plates printed in France

8. VII. 51 for m. Bon

Phototypen (collotype) in ^{groups of 8} plates ~~of 8~~ (to mount
economically) For each 8
" 25,680 francs for an edition of 1000
36,640 " " " " 2000

Prix of printing and making the edition, but
not for the paper.

Taxes from 5 to 18% (1% of client
provides the paper)

Total is 3,000+ francs plus the paper,
for each plate. (for edition of 1000)
say 4,000 with paper

160,000 francs
or about \$10. plus 11

Prix includes retouches

Maison Duval

13 rue daguerre

Paris XIV^{me}

φύλακες, επ.

φύλακες, επ.

Ερμόφαντος, επ.

Κα. Επικός, επ.

Δαμόκρετος, επ.

Πολύτης, επ.

Ἀμύντας, επ.

Τάδε κρείων, επ.

Προδρόμος, επ.

Δαμόκρετος, επ.

Βασιλεύς, επ.

Πυθόκρετος, επ.

Ἀριότομος, επ.

Εὐφρόνης, επ.

Θάμης, επ.

Ἀριότομος, επ.

Ἀριότομος, επ.

Ἀριότομος, επ.

Ἀριότομος, επ.

Ἀριότομος, επ.

Ἀριότομος, επ.

Ἀριότομος, επ.

Ἀριότομος, επ.

Ἀριότομος, επ.

Ἀριότομος, επ.

Ἀριότομος, επ.

Ἀριότομος, επ.

Ἀριότομος, επ.

Ἀριότομος, επ.



Γαλαξίας

Λέων

Κασσιόπεα

Ουρσός

Ερως

Ερως

Αρκτοούρος

Αρκτοούρος

Αρκτοούρος

Αρκτοούρος

Αρκτοούρος

Αρκτοούρος

Αρκτοούρος

Αρκτοούρος

Αρκτοούρος

Αρκτοούρος

Αρκτοούρος

Αρκτοούρος

Αρκτοούρος

Αρκτοούρος

Αρκτοούρος

Αρκτοούρος

Αρκτοούρος

Αρκτοούρος

Αρκτοούρος

Αρκτοούρος

Αρκτοούρος

Αρκτοούρος

Αρκτοούρος

Ερως, αρ.

Ερως, αρ.

Κασσιόπεα, αρ.

Αρκτοούρος, αρ.

Ερως, αρ.

Κασσιόπεα, αρ.

Φαειάδα, αρ.

Κασσιόπεα (αρ.)

Ουρσός, αρ.

Ποσειδών, αρ.

Νηυσίφρονας, αρ.

Τοξότης (αρ.)

Λέων, αρ.

Κασσιόπεα, αρ.

Ουρσός, αρ.

Δαμνός, αρ.

Αρκτοούρος, αρ.

Φαειάδα, αρ.

Ερως, αρ.

Αρκτοούρος, αρ.

Ερως, αρ.

Αρκτοούρος, αρ.

Αρκτοούρος, αρ.

Αρκτοούρος, αρ.

Αρκτοούρος, αρ.

Αρκτοούρος, αρ.

Αρκτοούρος, αρ.

Αρκτοούρος, αρ.

Αρκτοούρος, αρ.

Αρκτοούρος, αρ.

Αρκτοούρος, αρ.

Αρκτοούρος, αρ.

Αρκτοούρος, αρ.

Αρκτοούρος, αρ.

Αρκτοούρος, αρ.

Αρκτοούρος, αρ.

Αρκτοούρος, αρ.

Αρκτοούρος, αρ.

Αρκτοούρος, αρ.

Αρκτοούρος, αρ.

Αρκτοούρος, αρ.

Αρκτοούρος, αρ.

Αρκτοούρος, αρ.

Αρκτοούρος, αρ.

Αρκτοούρος, αρ.

Αρκτοούρος, αρ.

Αρκτοούρος, αρ.

Αρκτοούρος, αρ.

Αρκτοούρος, αρ.

Αρκτοούρος, αρ.

Αρκτοούρος, αρ.

Αρκτοούρος, αρ.

Αρκτοούρος, αρ.

Αρκτοούρος, αρ.

Αρκτοούρος, αρ.

Αρκτοούρος, αρ.

Αρκτοούρος, αρ.

21. IX. 54

KN. CORPUS

Model for publication

See the 1954 Vol. I, text and (separate fasciculi) plates, of Terracottas in the British Museum. Form of Abbreviation, Table of contents, etc. etc. Plates much skinned by L. T., as success with combining small pictures.

(Copy I saw is complimentary copy sent to D.B.T., and is to be forwarded to U.S.)

photo copy
sent to Carolyn
20.I.99

about Barker's photo

14.XII.98
16.XII.98

24.01

Bon photo used on Kristian plates

pl. 122:	TD 5541	Delos	16.37	Roll.
119	TD 630	"	10.37	KT 1612
"	TD 4536	"	164.70	by us
11	TD 4282	"	15.28	
118	TD 2503	"	12.26	
V	(KT 1604) TD 791	"	10.1	
"	TD 1779	"	11.25	
117	TD 586 TD 586	"	10.33	(KT 1582 TD 586)
"	3556	"	14.19	
116	3486	by us		
"	611	"	10.30	
115	4493	on the copy of the plate no. was not there 44.1 + this O.K.	15.35	
114	—			
113	—			
112	4084		15.17	
111	24		9.24	
"	155		10.25	
"	795		10.9	
110	—			
109	—			
107	3405	Problem KT 2356 add no. of cistern	13.27	
106	4692		15.5	
102	4682		15.3	
101	4669		15.1	
100	2585		—	
99	947		10.8	
97	3322		13.18	

check the
original
plate

photo is ex
from Perissus
cistern 1965
Metzgeria
see card biblio
graphically w. mast
card

plate 98 raised

TD after 5044 there are no photos by Bos

(2)

pl. 92

~~Indismissible~~ ? none

KT 1244
card no.

pl. 91

TD 4285

15.29 + 22027 cheque

n TD 1321 15.20

90 TD 3873 14.29

89 TD 3999 14.31

84 TD 4104, TD 3548 15.23, 14.15

83 TD 1084 3.27

77 TD 2933 13.41

76 TD 3256 13.13

76 TD 2936 13.42

n TD 2464 12.21

75 TD 47 9.25

73 TD 1605 ^{wrong no.} — TD 1065 (174.43, 192.1)

72 TD 2695 12.32

71 TD 5938 16.2

n TD 740 10.42

69 TD 2802 13.36

n TD 4387 15.33

68 Please, check in the original plate 4th row KT 929, the example is found by Mrs Choremis we photographed it, the number BA 1101 is unknown to me. Is it wrongly copied from the original This moment I do not have time to investigate it

66 TD 3789 14.25

65 KT 2414 no 88[?] = this is a temporary no. on our records of VII57 work^{in the} in the apotheca of Museum of Rhodes

65 TD 74 10.21

n On 1st row KT 883 the right no. is NAD 57/713 how do you write NAD? NAD?

64 TD 3550 14.17

(3)

pl.		Roll
63	TD 2971	13.2
"	TD 5336	16.32
62	TD 72	10.20
"	TD 2829	13.38
61	TD 4083	14.36
58	3 rd row KT 715 the right no. is NA 960/57 (omitted year 57)	
52	—	
50	TD 584	10.31
48	TD 4086	15.18
"	TD 4798	16.19
"	TD 5025	16.23
"	On plate wrongly written 5026 to be corrected	
"	—	
"	TD 3152	13.5
47	KT 2396 (pink row) add MGRA 2289	
44	TD 4541	15.48
43	TD 1426	11.15
42	TD 3236	13.10
"	TD 5036	16.25
37	wrong, TD 718 (KT 2321) the right no. is TD 718	
(36)	TD 37 (not Bon photo)	
35	TD 1159	11.5
33	TD 4460	15.34
32	TD 638	10.38 and 452.5
31	TD 4294	15.30
30	TD 4662	15.42
pl. 23	now 48 KT 313	TD 1649
20	TD 71	
19	TD 1277	
On photo was written 1949 Needs to be corrected to 1649 on the plate There was a Bon photo but we used enlargement of our photo 473.34 11.7		

4

		Bon
pl. 19	TD 4203	15.27
18	TD 4508	15.36
"	TD 832	10.4
16	TD 4100	15.20
"	TD 4146	15.25-
13	TD 1806	11.26
11	TD 3546	16.38
10	TD 4661	15.42
"	TD 3569	14.20
"	TD 826	1938 3.2 + (174.25 ^v to be added)
9	none	
8	TD 2719	12.34
"	TD 5740	16.43
7	by error: KT 92 A1 = MGRA 1	
6	"	KT 2134 A1 = MGRA 1
"	"	KT 2135 A1 = MGRA 1
"	"	KT 82 A1 = MGRA 1
"	TD 3515	13.29
"	KT 1908 ind. no Mus. IBM 1955, 9-20, 108 no space for it	
4	write KT 51 MGRA 1 and KT 55 MGRA 1	
"	TD 738	10.41
3	TD 479	10.28
"	TD 3756	14.23
2	KT 30 MGRA 1 not A1	
1	TD 4018	exist Bon neg. + ours If is not Bon negativ

MSP

- ① After last 8 plates (Sept.) = 123 - 131
- ② IOSPE III from Jefremow's Knidian work ✓
AA has filed them, but MSP will finish & note corrections?
& send me the corrected copy.
- ③ Bibliography - not fully understood -
- ④ Koan refs from Barron & Barker.
- ⑤ material from Craig Barker - need to make cards for
file new combinations
- ⑥ List of Bon photos ✓

Works 4 hrs/wk for school

I told her to keep working as she has been doing - roughly
same hours, making time sheets as before. In January
we'll see how the money is going.

Plates 123: KT 1794 - 2456 20 photos (end of Knidian, 2K 2 letter w. or without device
124: KT 2457 - 2474 23 " 1 " 2
125: KT 2475 - 2492 22 " End of stamps w. 2 letter, and 1 letter w. or without device
126: KT 2493 - 2507 23 " 1st: w. 1 letter, monograms, devices, amphora
127: KT 2508 - 2521 26 " Devices amphora - cluster
128: KT 2522 - 2538 23 " " cross - oinochoe
pl. 128 KT 2531 - 2542 = excav. of Argos publ. by Langer.
129 KT 2539 - KT 2544 palm branch - grow in outline photo used, ist here
21 24 photos she did not used in her publ.
130 KT 2545 - 2556 A-C 20 photos KT 2545 Bon photo LKEM 363 (previous ME 213)

+ KT 2557 given to an ex. from Tanais publ. by Shelov. we will give the publ. no.?
no reading by Shelov. The reading made by us
from photo shown by Johnsen.

[26]

Problems

20.1.98

~~SS 99889 (KT 2524)~~
~~75-2~~
~~SS 2874~~ 0 mod 2 ~~KT 253~~
SS 14189 small by ~~KT 14189~~
2534

22187 = SS 9
KT 2531 → 14992

K 4410 = SS 14993

MM 5270 - 14994

TT 1292 SS 14995

31.10.94 Shop to vitrine - can't take scale

27.01

24.1.08 It's not KT 1465





27.026

1465



9756 27.036

KT 1.1

A look at reports for Appendix
KT 651 - 760, happens to be a top.
give KT reading

Note in general: there is no documentation, i.e.
the identifying example is not listed.

KT 660 (Dum-Tony) impossible. See data sheet
at



KT 1129



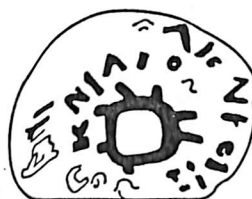
KT 1282



KT 1658



KT 1678



KT 1797



KT 1892



KT 2308



KT 2309

24. J. 94

FIX CANON & DRWG

KT 1282

~~[1]ππ[---] 'Ερηία το Νικασίβο
 Ερμόφ[---]
 Δαμ[1]σεχο[3] [---] υδου
 bankration
 (retr)~~

NOTE RETR as sep. line

Dionysus Ermius + Nikasiboulos

Er probl = Ipparchos (v. Pnyx p. 148 n. 18)

Fab poss = Ermophantos

But could have Damiorgos w/ E[---] as publ'd in Pnyx
 p. 148 n. 12 (cf. MSBF p. 35)

[1]ππ[---] 'Ερηία το Νικασίβο
 Δαμ[1]σεχο[3] Ερμόφαν υδου
 bankration
 (retr)

KP. Pulled handles / cleaned
and left with Craig. [31.01]

PHOTOGRAPHY LISTS #1-4 BY KT NUMBERS (to be rephotographed)

Given 23-3-93

✓KT 6	SS 621
✓KT 9	SS 13570
✓KT 20	SS 6071
✓KT 27	SS 5939
✓KT 40	SS 1679
✓KT 40	SS 5443
✓KT 50	SS 5165
✓KT 57	SS 939
✓KT 65	SS 3717
✓KT 66	SS 5108
✓KT 67	SS 1018
✓KT 70	SS 239
✓KT 71	SS 261
KT 73	SS 5137
✓KT 76	SS 6281
✓KT 107	SS 9164
✓KT 152	SS 2658
✓KT 161	SS 9959
✓KT 184	SS 6122
✓KT 189	SS 13302
✓KT 206	SS 4733
✓KT 214	SS 11362
✓KT 215	SS 10227
✓KT 219	SS 12932 + 13840
✓KT 231	SS 3890
✓KT 232	SS 6085
✓KT 245	SS 9151
✓KT 284	SS 5175
✓KT 285	SS 3046
✓KT 285	SS 9571
✓KT 297	SS 4819
✓KT 307	SS 2915
✓KT 307	SS 4202
✓KT 308	SS 2054
✓KT 319	SS 1700
✓KT 334	SS 5788
✓KT 343	SS 4335
✓KT 345	SS 2566
✓KT 346	SS 946
✓KT 350	SS 1244
✓KT 361	SS 5254
✓KT 367	SS 5909
✓KT 369	SS 2376 →
✓KT 372	SS 5068
✓KT 373	SS 7648

Bottom 30-3-93

44 handles

30-3-93

✓KT 373	SS 10349
✓KT 385	SS 1635
✓KT 387	SS 4386 4336
✓KT 408	SS 1581
✓KT 433	SS 4332.5
✓KT 442	SS 9967
✓KT 451	SS 8104
✓KT 454	SS 998
✓KT 456	SS 5589
✓KT 460	SS 5067
✓KT 468	SS 972
✓KT 470	SS 3551
✓KT 490	SS 1448
✓KT 497	SS 7230
✓KT 502	SS 3418
✓KT 531	SS 5941
✓KT 537	SS 6633
✓KT 562	SS 6326
✓KT 571	SS 3960
✓KT 582	SS 3464
✓KT 586	SS 4164
KT 610	SS 3050 - out sh. IV. 5th S. log. IV
✓KT 614	SS 7395
✓KT 618	SS 7694
✓KT 621	SS 891
✓KT 643	SS 1520
✓KT 646	SS 10177
✓KT 647	SS 4504 4054
✓KT 663	SS 5668
✓KT 667	SS 4515
✓KT 693	SS 719
✓KT 708	SS 513
✓KT 724	SS 167
✓KT 724	SS 2744
? KT 730	SS 48
✓KT 731	SS 7666
✓KT 732	SS 9762.9
✓KT 744	SS 1223
KT 751	SS 422
KT 780	SS 4594
KT 800	SS 9297
KT 812	SS 3846
KT 818	SS 6094
KT 820	SS 7777
KT 825	SS 1068
KT 839	SS 9354

10.5.93

46 handles

✓ KT 849	SS 7665
✓ KT 860	SS 226
✓ KT 874	SS 1629
✓ KT 878	SS 6176
✓ KT 881	SS 10153
✓ KT 887	SS 2187
✓ KT 911	SS 4155
✓ KT 965	SS 4480
KT 1071	SS 11245 ? <i>SS 5369</i>
KT 1077	SS 6224
✓ KT 1079	SS 276
✓ KT 1094	SS 4108
✓ KT 1144	SS 81
✓ KT 1157	SS 1457
✓ KT 1163	SS 3938
✓ KT 1165	SS 10352 ✓
✓ KT 1192	SS 3059
✓ KT 1204	SS 3334
✓ KT 1208	SS 3014
✓ KT 1226	SS 5967
✓ KT 1230	SS 2983
✓ KT 1262	SS 7055
✓ KT 1265	SS 14447
✓ KT 1267	SS 8611
✓ KT 1273	SS 2369 <i>3369</i>
KT 1276	SS 1037 - <i>10318 perhaps? (no such no.)</i>
✓ KT 1343	SS 5933
KT 1343	SS 5933
KT 1372	SS 11342 - <i>(no such no.) 11434 perhaps?</i>
✓ KT 1415	SS 5981
✓ KT 1679	SS 3650
✓ KT 1722	SS 1028
KT 1748	SS 1077
→ KT 1839	SS 5563
KT 1954	SS 2998
KT 1992	SS 13194
KT 2022	SS 5017
KT 2025	SS 4893
→ KT 2202	SS 3199
KT 2233	SS 691
KT 2264	SS 6510
→ KT 1822	SS 13552

42 handles

1. KT 736	SS 48	31.04
2. " 369	SS 2376	
3 " 2022	SS 5017	
4. 2025	SS 4893	
5. KT 1969	SS 12125	
6. KT 1954	SS 2998	
7. KT 1776	" 4227	
8. KT 1839	" 5563	
9. KT 1822	" 13552	
10. KT 1748	" 1077	
11. " 1455	" 1037	
12 " 1372	" 11434	

Handles that were pulled
for rephotographing

Handles in large tray. Unsure of what to be done with them as no specific inst. were left on tray. 25.V.93 31.05

- | | |
|--------------|-----------|
| 1. SS 11498 | 39. 12073 |
| 2. " 11497 | 40. 11955 |
| 3. " 12722 | 41. 11813 |
| 4. " 11485 | 42. 11354 |
| 5. " SS 9171 | 43. 11206 |
| 6. " 11176 | 44. 10901 |
| 7. " 10605 | 45. 11527 |
| 8. " 10615 | 46. 11142 |
| 9. " 10256 | 47. 10866 |
| 10. " 10133 | |
| 11. " 9203 | |
| 12. " 7818 | |
| 13. " 9093 | |
| 14. " 6355 | |
| 15. " 7917 | |
| 16. " 7670 | |
| 17. " 7816 | |
| 18. " 6182 | |
| 19. " 2239 ? | |
| 20. " 6080 | |
| 21. " 6059 | |
| 22. " 6062 | |
| 23. " 5773 | |
| 24. " 3992 | |
| 25. " 5075 | |
| 26. " 5086 | |
| 27. " 3913 | |
| 28. " 2739 ? | |
| 29. " 2543 | |
| 30. " 3323 | |
| 31. " 97 | |
| 32. " 14823 | |
| 33. " 13715 | |
| 34. " 14506 | |
| 35. " 12485 | |
| 36. " 12484 | |
| 37. " 12313 | |
| 38. " 12108 | |

32.01

KT 1198

Co 129 (99.34) needs print
new photo 94-6-24 large

KT 1198
New print
We will show more
of the handle.
is it the ex from Corinth?
Co 129



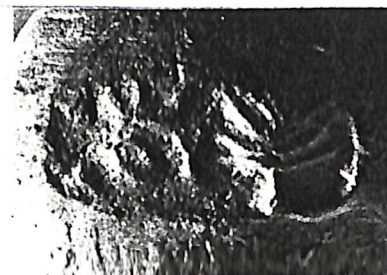
KT 273 K6A 1317



KT 1199 MGRA 1



KT 1202 EM 1



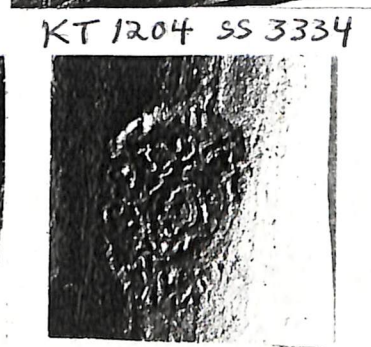
KT 1203 SS 9331



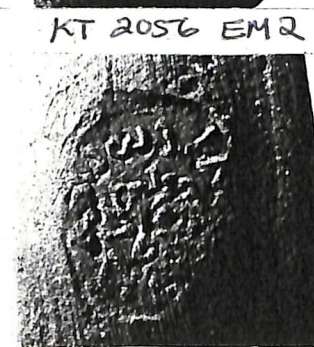
KT 1200 SS 10482



KT 1201 SS 4002



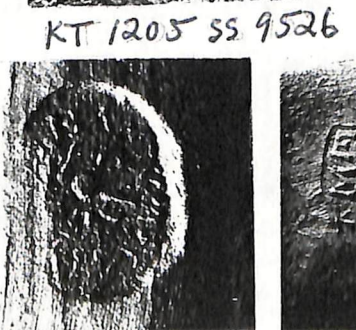
KT 1204 SS 3334



KT 2056 EM 2



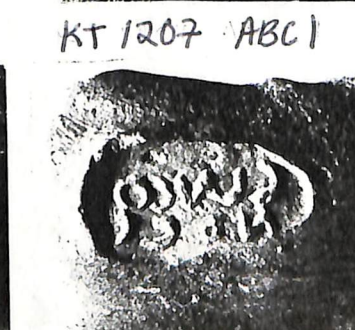
KT 1205 EM 1



KT 1205 SS 9526



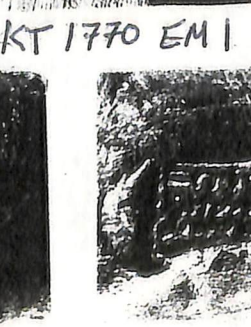
KT 1206 EM 1



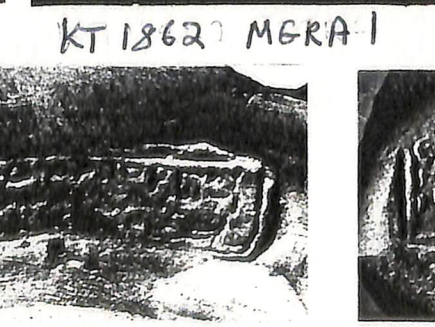
KT 1207 ABC 1



KT 1771 EM 1



KT 1770 EM 1



KT 1862 MGRA 1



KT 1209 SS 9103

KT 1208 SS 3014



KT 1211 K6A 151



KT 1212 SS 6927



32.01

KT 1198

Co 129 (39, 34) needs print
new plate 94-6-24 large



KT 1195 EM 2



KT 1194 C-47-308

KT 1198
New print
We will show more
of the handle.
is it the ex. from Corinth?
Co 129



KT 2273 K6A 1317



KT 1199 M6RA 1



KT 1202 EM 1



KT 1203 SS 9331



KT 1200 SS 10482



KT 1201 SS 4002



KT 1204 SS 3334



KT 2056 EM 2



KT 1205 EM 1



KT 1205 SS 9526



KT 1206 EM 1



KT 1207 ABC 1



KT 1771 EM 1



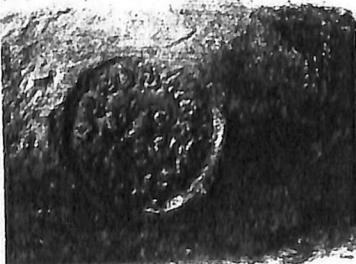
KT 1770 EM 1



KT 1862 M6RA 1



KT 1209 SS 9103



KT 1208 SS 3014



KT 1211 K6A 151



KT 1212 SS 6927

